

Appendix

I

Appendix I: Environmental Justice Supporting Documentation

Durham-Orange Light Rail Transit Project



August 2015

Identifying Minority and Low-Income Populations

FTA Circular 4703.1 provides definitions of the minority populations addressed by EO 12898. These populations are as follows:

- **Minority Populations** – any readily identifiable group of minority persons who live in geographic proximity, and if circumstances warrant, geographically dispersed or transient persons such as migrant workers or Native Americans who will be similarly affected by a proposed DOT program, policy or activity. Minority includes persons who are American Indian and Alaska Native, Asian, Black or African American, Hispanic or Latino and Native Hawaiian and other Pacific Islander.
- **Low-Income Populations** – any readily identifiable group of low-income persons whose median household income is at or below the US Department of Health and Human Services poverty guidelines and, if circumstances warrant, geographically dispersed or transient persons such as migrant workers or Native Americans who will be similarly affected by a proposed DOT program, policy or activity. For the purpose of this EJ analysis, low-income populations are defined as populations with a ratio of income to poverty level of 0-1.49 (150 percent).

Concentrations of minority and low-income populations in the study area were identified through analysis of the 2010 U.S. Census data and American Community Survey Data (2007-2011) at both the county and block group level. The individual block group data were compared to the respective countywide data to determine whether any of the block groups would qualify as “EJ area” or “non-EJ area” within the study area. An “EJ area” was defined to include any block group in which the minority or low-income population meets either of the following thresholds:

- The minority or low-income population in the block group exceeds 50 percent.
- The percentage of a minority or low-income population in the affected area is meaningfully greater than the lowest percentage in the respective county.

For this project, it was determined that the minority or low-income population is “meaningfully greater” than the average in the surrounding jurisdictions if it is higher than the average for Orange County and Durham County. The effort to identify EJ populations was supplemented by the extensive public outreach Triangle Transit conducted as part of the project.

In Final Circular 4703.1, the FTA advises that a small minority or low-income population in the study area does not eliminate the possibility of a disproportionately high and adverse effect on these populations. Therefore, while the analysis of potential disproportionately high and adverse effects focused on areas with high concentrations of EJ population, the analysis considered whether there would be disproportionately high and adverse effects on minority and low-income populations in all block groups within the study area.

The population of the study area is approximately 60,000. Approximately 51 percent of the population belongs to a minority group, as shown in Table I1-1. The minority group with the largest representation in the study area is Black or African American (28 percent). The second largest minority group in the study area is Hispanic (13 percent) (see Table I2-1).

Based on the minority and low-income criteria, described above, 56 of the 84 block groups are identified as representing EJ populations. The population in the 56 block groups totals 48,380, or about 80 percent of the total study area population. Of the 56 EJ block groups, 37 groups exceed both the minority and low-income EJ criteria.

Table I1-1: Environmental Justice Populations

Geography	Total Population	Minority Population*		Low-Income Level		EJ Area		Median Household Income
		#	%	#	%	Minority	Low-Income	
UNC Campus Area								
Census Tract 115, Block Group 1	10	1	12.1%	3	33.3%		●	\$62,273
Census Tract 122.01, Block Group 1	135	20	14.5%	6	4.5%			\$138,523
Census Tract 116.01, Block Group 2	2,388	785	32.9%	365	97.1%	●	●	\$4,756
Census Tract 116.02, Block Group 2	1,170	145	12.4%	107	100.0%		●	\$5,000
Census Tract 116.02, Block Group 3	3,089	930	30.1%	777	58.1%	●	●	\$15,844
Census Tract 113, Block Group 1	162	60	37.2%	107	66.1%	●	●	\$21,169
Census Tract 116.01, Block Group 1	818	153	18.7%	0	0.0%			N/A
Census Tract 114, Block Group 2	488	141	28.9%	275	69.5%	●	●	\$21,889
Census Tract 117, Block Group 2	1,335	256	19.2%	604	45.3%		●	\$38,393
Census Tract 117, Block Group 1	2,782	387	13.9%	810	57.7%		●	\$37,321
Census Tract 114, Block Group 1	15	2	10.8%	2	16.4%			\$79,167
Census Tract 116.02, Block Group 1	1,383	475	34.3%	130	100.0%		●	\$3,854
TOTAL	13,775	3,356	24.4%	3,187	59.0%			
East Chapel Hill								
Census Tract 115, Block Group 1	314	43	13.7%	105	33.4%		●	\$62,273
Census Tract 122.01, Block Group 1	232	34	14.5%	10	4.5%			\$138,523
Census Tract 116.02, Block Group 3	3	1	30.1%	1	58.1%	●	●	\$15,844
Census Tract 121, Block Group 2	2,154	233	10.8%	379	17.6%			\$66,875
Census Tract 121, Block Group 4	81	18	22.6%	12	14.5%			\$86,625
Census Tract 116.02, Block Group 1	390	134	34.3%	37	100.0%	●	●	\$3,854
Census Tract 20.19, Block Group 2	98	20	20.0%	13	13.7%			\$44,152
Census Tract 20.18, Block Group 1	1,035	148	14.3%	69	6.6%			\$83,333

Geography	Total Population	Minority Population*		Low-Income Level		EJ Area		Median Household Income
		#	%	#	%	Minority	Low-Income	
Census Tract 20.18, Block Group 3	192	46	24.0%	5	2.6%			\$104,286
Census Tract 20.19, Block Group 1	70	39	55.1%	17	23.7%	●		\$42,417
Census Tract 20.19, Block Group 3	897	110	12.3%	21	2.5%			\$82,115
TOTAL	5,465	826	15.1%	668	13.2%			
Leigh Village								
Census Tract 20.18, Block Group 1	68	10	14.3%	5	6.6%			\$83,333
Census Tract 20.18, Block Group 3	779	187	24.0%	20	2.6%			\$104,286
Census Tract 20.18, Block Group 2	647	232	35.9%	240	37.2%		●	\$40,389
TOTAL	1,494	429	28.7%	265	17.7%			
US 15-501 Corridor								
Census Tract 121, Block Group 1	254	97	38.0%	56	23.1%			\$50,556
Census Tract 112.04, Block Group 2	4	0	1.4%	0	0.0%			\$250,001
Census Tract 112.05, Block Group 3	475	311	65.6%	254	53.5%	●	●	\$34,238
Census Tract 20.17, Block Group 3	965	239	24.8%	174	18.1%			\$62,740
Census Tract 20.17, Block Group 1	0	0	0.0%	0	2.5%			\$115,909
Census Tract 20.17, Block Group 2	999	152	15.2%	19	1.9%			\$80,052
Census Tract 20.15, Block Group 2	2,482	1,739	70.0%	1,264	52.8%	●	●	\$31,701
Census Tract 20.16, Block Group 1	3,089	2,439	79.0%	1,526	49.4%	●	●	\$31,037
Census Tract 20.18, Block Group 1	424	61	14.3%	28	6.6%			\$83,333
Census Tract 6, Block Group 3	0	0	0.0%	0	0.0%			\$160,517
Census Tract 20.15, Block Group 3	595	205	34.5%	12	2.1%			\$79,286
Census Tract 20.16, Block Group 2	1,845	1,247	67.6%	678	36.7%	●	●	\$37,472
Census Tract 20.18, Block Group 3	1	0	0.0%	0	2.6%			\$104,286
Census Tract 20.18, Block Group 2	2,173	781	35.9%	807	37.2%		●	\$40,389
TOTAL	13,307	7,270	54.6%	4,819	36.5%			
Duke West Campus & Medical Center								

Geography	Total Population	Minority Population*		Low-Income Level		EJ Area		Median Household Income
		#	%	#	%	Minority	Low-Income	
Census Tract 20.17, Block Group 1	95	18	18.7%	2	2.5%			\$115,909
Census Tract 20.17, Block Group 2	0	0	0.0%	0	1.9%			\$80,052
Census Tract 15.02, Block Group 1	2,103	1,907	90.7%	926	47.7%	●	●	\$26,801
Census Tract 5, Block Group 1	682	473	69.3%	402	77.3%	●	●	\$5,380
Census Tract 5, Block Group 2	4	2	46.0%	1	31.1%		●	\$24,573
Census Tract 15.01, Block Group 1	2,721	1,343	49.4%	67	100.0%	●	●	\$7,955
Census Tract 6, Block Group 3	212	0	0.0%	0	0.0%			\$160,517
Census Tract 15.02, Block Group 3	1,665	1,318	79.1%	902	56.2%	●	●	\$27,382
Census Tract 15.02, Block Group 4	670	600	89.6%	327	48.8%	●	●	\$12,835
Census Tract 15.02, Block Group 2	605	205	33.9%	290	51.1%		●	\$11,960
TOTAL	8,757	5,865	67.0%	2,918	51.4%			
Old West Durham / Duke East Campus								
Census Tract 15.02, Block Group 1	586	531	90.7%	258	47.7%	●	●	\$26,801
Census Tract 4.02, Block Group 1	1,747	558	31.9%	370	21.2%			\$41,466
Census Tract 5, Block Group 1	223	154	69.3%	132	77.3%	●	●	\$5,380
Census Tract 4.01, Block Group 3	2	0	10.7%	0	21.0%			\$80,068
Census Tract 5, Block Group 2	403	185	46.0%	125	31.1%		●	\$24,573
Census Tract 3.02, Block Group 3	598	250	41.7%	262	43.7%		●	\$21,828
Census Tract 5, Block Group 3	210	190	90.2%	108	52.4%	●	●	\$25,393
Census Tract 15.03, Block Group 1	1,880	1,028	54.6%	0	0.0%	●		N/A
Census Tract 22, Block Group 1	295	148	50.4%	149	51.5%	●	●	\$41,827
Census Tract 6, Block Group 3	0	0	0.0%	0	0.0%			\$160,517
Census Tract 15.02, Block Group 3	2	1	79.1%	1	56.2%	●	●	\$27,382
Census Tract 3.01, Block Group 3	100	33	33.1%	21	21.4%			\$43,375

Geography	Total Population	Minority Population*		Low-Income Level		EJ Area		Median Household Income
		#	%	#	%	Minority	Low-Income	
Census Tract 7, Block Group 1	159	85	53.7%	66	44.0%		●	\$20,221
TOTAL	6,204	3,164	51.0%	1,492	35.2%			
Downtown Durham								
Census Tract 11, Block Group 2	171	155	91.0%	117	68.6%	●	●	\$21,693
Census Tract 11, Block Group 1	261	235	89.9%	190	73.6%	●	●	\$16,339
Census Tract 5, Block Group 2	0	0	0.0%	0	31.1%		●	\$24,573
Census Tract 3.02, Block Group 3	9	4	41.7%	4	43.7%		●	\$21,828
Census Tract 22, Block Group 1	960	484	50.4%	485	51.5%		●	\$41,827
Census Tract 7, Block Group 1	512	275	53.7%	213	44.0%		●	\$20,221
Census Tract 23, Block Group 1	765	712	93.0%	285	67.0%	●	●	\$16,341
Census Tract 23, Block Group 2	77	77	100.0%	77	100.0%	●	●	\$35,563
TOTAL	2,755	1,942	70.5%	1,370	57.9%			
East Durham								
Census Tract 10.01, Block Group 2	350	331	94.7%	207	59.8%	●	●	\$16,391
Census Tract 11, Block Group 2	1,082	985	91.0%	742	68.6%	●	●	\$21,693
Census Tract 14, Block Group 2	1,957	1,957	100.0%	1,393	71.2%	●	●	\$14,877
Census Tract 11, Block Group 1	255	229	89.9%	185	73.6%	●	●	\$16,339
Census Tract 10.01, Block Group 1	19	18	95.7%	9	47.9%	●	●	\$31,423
Census Tract 13.03, Block Group 2	10	10	100.0%	3	30.2%	●	●	\$36,964
Census Tract 10.01, Block Group 3	741	712	96.1%	452	61.0%	●	●	\$18,563
Census Tract 14, Block Group 1	906	898	99.1%	638	70.5%	●	●	\$16,219
Census Tract 13.03, Block Group 1	2,012	1,683	83.7%	279	49.5%	●	●	\$26,333
Census Tract 13.01, Block Group 1	920	906	98.5%	491	53.3%	●	●	\$13,986
Census Tract 20.09, Block Group 1	202	201	99.5%	82	40.5%	●	●	\$47,550
Census Tract 23, Block Group 1	1	1	100.0%	0	67.0%	●	●	\$16,341

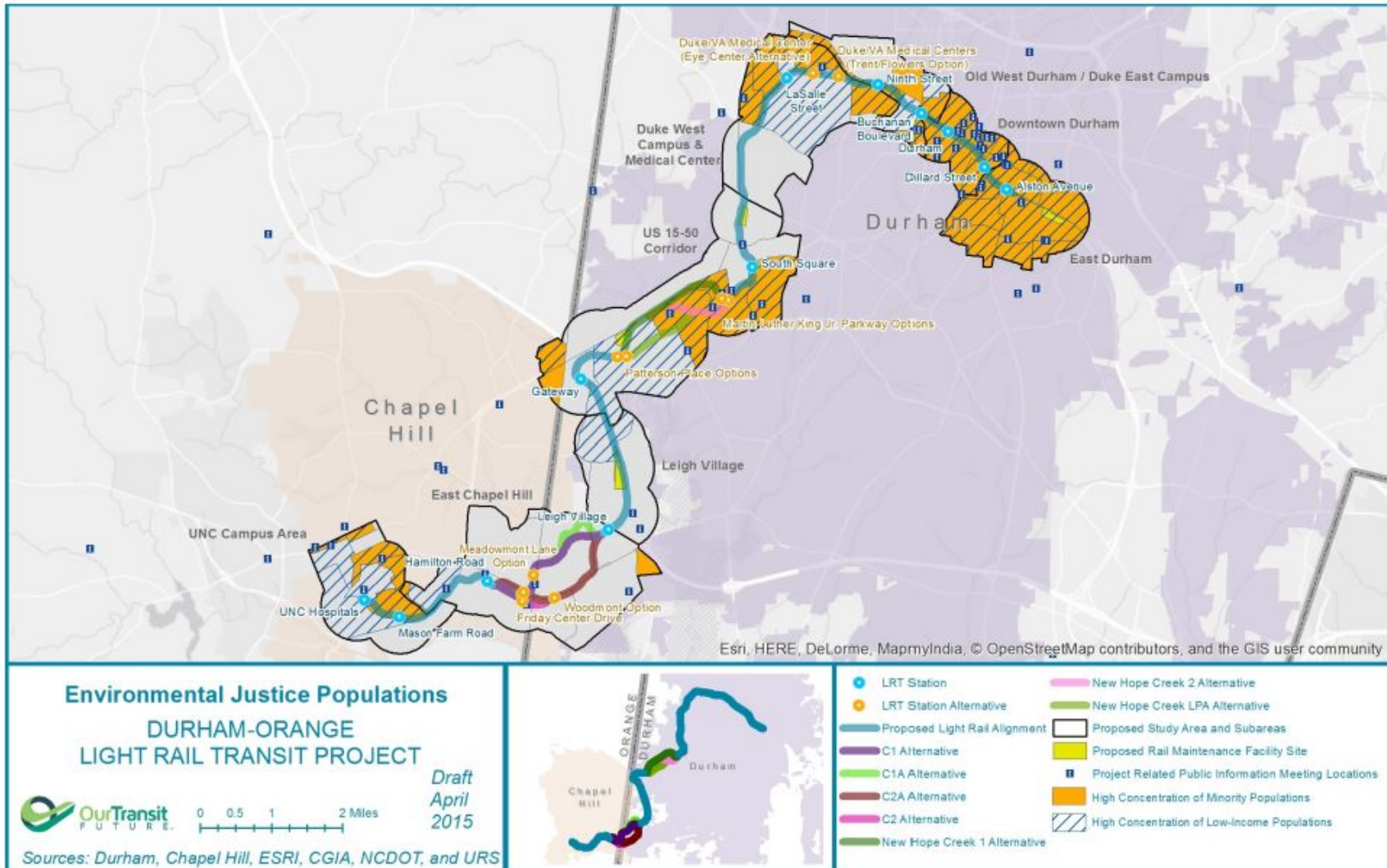
Geography	Total Population	Minority Population*		Low-Income Level		EJ Area		Median Household Income
		#	%	#	%	Minority	Low-Income	
Census Tract 23, Block Group 2	68	68	100.0%	68	100.0%	●	●	\$35,563
TOTAL	8,523	8,000	93.9%	4,548	64.4%			
Study Area	60,280	30,851	51.2%	19,267	43.3%			
Orange County	131,856	37,882	28.7%	30,235	24.9%			\$56,055
Durham County	263,862	151,166	57.3%	65,013	25.9%			\$50,078
Two-County Region	395,718	189,048	47.8%	95,248	25.6%			

Source: 2010 US Census Data; American Community Survey Data (2007-2011)

The minority population within the study area is 51 percent of the total population within the study area, which is higher than the overall percentage for Orange County (29 percent) but lower than the overall percentage for Durham County (57 percent). Figure I1-1 shows the location of minority populations by block group. In general, the higher concentrations are seen in the northeastern portion of the corridor, in West Durham, Downtown Durham, and East Durham.

The percentage of the low-income population living in the study area (43 percent) is higher than Durham County (26 percent) and Orange County (25 percent). Figure I1-1 shows the concentrations of low-income populations. In general, the lower concentrations of low-income populations are located in the East Chapel Hill and Leigh Village evaluation areas, while the higher concentrations are located in portions of the UNC Campus Area, US 15-501 Corridor, and in West Durham, Downtown Durham, and East Durham.

Figure I1-1: Environmental Justice Populations



Environmental Justice by Evaluation Area

This section provides an overview of conditions in the eight evaluation areas that make up the D-O Corridor.

I2.1 UNC Campus Area

The UNC Campus Area evaluation area is entirely within Orange County and has a population of 13,800, making it the most populous evaluation area. According to the US Census, approximately 24 percent of the population in the UNC Campus Area evaluation area belongs to a minority group. The minority group with the largest representation in this evaluation area is African American or Black (10 percent). The second largest minority group is Asian (9 percent). Four of the 12 Census block groups in the UNC Campus Area evaluation area had minority populations greater than the Orange County average of 29 percent. Approximately 59 percent of the population in this evaluation area is classified as low-income. Of the 12 Census block groups, 9 had a low-income population greater than 25 percent (Orange County's low-income average).

Nine out of 12 block groups in this evaluation area are categorized as EJ areas due to their higher percentages of minority and low-income populations. Of the nine EJ block groups, four groups exceed both the minority and low-income EJ criteria.

I2.2 East Chapel Hill

The East Chapel Hill evaluation area has a population of 5,500. According to the US Census, approximately 15 percent of the population in the East Chapel Hill evaluation area belongs to a minority group. The minority group with the largest representation in this evaluation area is Asian (5 percent). The second largest minority group is African American or Black (5 percent). Three of the 11 Census block groups in the East Chapel Hill evaluation area have minority populations greater than the Orange County average (29 percent). Approximately 13 percent of the population in this evaluation area is classified as low-income. Of the 11 Census block groups, three have a low-income population greater than 25 percent (Orange County's low-income average).

Four out of 11 block groups in this evaluation area are categorized as EJ areas due to their higher percentages of minority and low-income populations. Of the four EJ block groups, two block groups exceed both the minority and low-income EJ criteria.

I2.3 Leigh Village

The Leigh Village evaluation area has a population of 1,500, making it the least populous evaluation area. This evaluation area is located within Durham County and according to the US Census, approximately 29 percent of the population in the Leigh Village evaluation area belongs to a minority group. The minority group with the largest representation in this evaluation area is African American or Black (14 percent). The second largest minority group is Asian (7 percent). None of the three Census block groups in the Leigh Village evaluation area have minority populations greater than the Orange County average of 29 percent. Approximately 18 percent of the population in this evaluation area is classified as low-income. Of the three census block groups, one has a low-income population greater than 25 percent (Orange County's low-income average). One of the three block groups in this evaluation area is categorized as an EJ area due to its higher percentage of low-income populations.

12.4 US 15-501 Corridor

The US 15-501 Corridor evaluation area has a population of 13,300. This evaluation area straddles Orange and Durham counties and according to the US Census, approximately 55 percent of the population in the US 15-501 Corridor evaluation area belongs to a minority group. The minority group with the largest representation in this evaluation area is Hispanic (26 percent). The second largest minority group is African American or Black (21 percent). Four of the 14 Census block groups in the US 15-501 Corridor evaluation area have minority populations greater than the Orange County and Durham County averages (29 percent and 57 percent, respectively). Approximately 37 percent of the population in this evaluation area is classified as low-income. Of the 14 Census block groups, 5 have a low-income population greater than their respective county averages.

Five out of 14 block groups in this evaluation area are categorized as EJ areas due to their higher percentages of minority and low-income populations. Of the five EJ block groups, four groups exceed both the minority and low-income EJ criteria.

12.5 Duke West Campus and Medical Center

The Duke West Campus and Medical Center evaluation area has a population of 8,800. This evaluation area is, like all the other remaining evaluation areas, located entirely within Durham County. According to the US Census, approximately 67 percent of the population in the Duke West Campus and Medical Center evaluation area belongs to a minority group. The minority group with the largest representation in this evaluation area is African American or Black (26 percent). The second largest minority group is Hispanic (21 percent). Five of the 10 Census block groups in this evaluation area have minority populations greater than the Durham County average (57 percent). Approximately 51 percent of the population in this evaluation area is classified as low-income. Of the 10 Census block groups, 7 have a low-income population greater than their respective county averages.

Seven out of 10 block groups in this evaluation area are categorized as EJ areas due to their higher percentages of minority and low-income populations. Of the seven EJ block groups, five groups exceed both the minority and low-income EJ criteria.

12.6 Old West Durham / Duke East Campus

The Old West Durham/Duke East Campus evaluation area has a population of 6,200. According to the US Census, approximately 51 percent of the population in the Old West Durham/Duke East Campus evaluation area belongs to a minority group. The minority group with the largest representation in this evaluation area is African American or Black (21 percent). The second largest minority group is Asian (13 percent). Six of the 13 Census block groups in this evaluation area have minority populations greater than the Durham County average (57 percent). Approximately 35 percent of the population in this evaluation area is classified as low-income. Of the 13 Census block groups, 8 have a low-income population greater than the Durham County average.

Nine out of 13 block groups in this evaluation area are categorized as EJ areas due to their higher percentages of minority and low-income populations. Of the 13 EJ block groups, 5 groups exceed both the minority and low-income EJ criteria.

12.7 Downtown Durham

The Downtown Durham evaluation area has a population of 2,800. According to the US Census, approximately 71 percent of the population in the Downtown Durham evaluation area belongs to a

minority group. The minority group with the largest representation in this evaluation area is African American or Black (49 percent). The second largest minority group is Hispanic (12 percent). Four of the eight census block groups in this evaluation area have minority populations greater than the Durham County average (57 percent). Approximately 58 percent of the population in this evaluation area is classified as low-income. All the census block groups in this evaluation area have a low-income population greater than the Durham County average.

All eight of the block groups in this evaluation area are categorized as EJ areas due to their higher percentages of minority and low-income populations. Of the eight EJ block groups, four groups exceed both the minority and low-income EJ criteria.

12.8 East Durham

The East Durham evaluation area has a population of 8,500. According to the US Census, approximately 94 percent of the population in the East Durham evaluation area belongs to a minority group. The minority group with the largest representation in this evaluation area is African American or Black (83 percent). The second largest minority group is Hispanic (8.9 percent). All 13 Census block groups in this evaluation area have minority populations and low-income populations greater than the Durham County average (57 percent and 29 percent, respectively). Approximately 64 percent of the population in this evaluation area is classified as low-income. All 13 block groups in this evaluation area are categorized as EJ areas due to their higher percentages of minority and low-income populations.



Appendix I: Environmental Justice Supporting Documentation

Table I2-1: Race and Ethnicity in the Project Area

Geography		Total Population	White only		African-American or Black only		American Indian/ Native Alaskan only		Asian only		Native Hawaiian/ Pacific Islander only		Hispanic*		Other Race		Two or More Races		Minority Population**	
Census Tract	Block Group		#	%	#	%	#	%	#	%	#	%	#	%	#	%	#	%	#	%
UNC Campus Area																				
115	1	10	9	86%	1	8%	0	0%	0	3%	0	0%	0	2%	0	0%	0	2%	1	14%
122.01	1	135	115	86%	11	8%	0	0%	6	4%	0	0%	2	1%	0	0%	1	1%	20	15%
116.01	2	2,388	1,603	67%	220	9%	0	0%	365	15%	0	0%	180	8%	108	5%	15	1%	785	33%
116.02	2	1,170	1,025	88%	23	2%	0	0%	73	6%	0	0%	29	3%	19	2%	12	1%	145	12%
116.02	3	3,089	2,159	70%	423	14%	0	0%	311	10%	0	0%	112	4%	13	0%	89	3%	930	30%
113	1	162	102	63%	50	31%	2	1%	1	1%	0	0%	2	1%	2	1%	4	2%	60	37%
116.01	1	818	665	81%	60	7%	0	0%	42	5%	0	0%	51	6%	16	2%	0	0%	153	19%
114	2	488	347	71%	75	15%	0	0%	52	11%	0	0%	9	2%	3	1%	5	1%	141	29%
117	2	1,335	1,079	81%	121	9%	0	0%	84	6%	0	0%	42	3%	0	0%	8	1%	256	19%
117	1	2,782	2,395	86%	179	6%	0	0%	112	4%	0	0%	44	2%	63	2%	29	1%	387	14%
114	1	15	13	89%	1	4%	0	0%	1	6%	0	0%	0	1%	0	0%	0	0%	2	11%
116.02	1	1,383	908	66%	192	14%	0	0%	160	12%	0	0%	86	6%	0	0%	37	3%	475	34%
TOTAL		13,775	10,419	76%	1,356	10%	2	0%	1,206	9%	0	0%	557	4%	224	2%	200	2%	3,356	24%
East Chapel Hill																				
115	1	314	271	86%	24	8%	1	0%	8	3%	0	0%	5	2%	0	0%	7	2%	43	14%
122.01	1	232	198	86%	19	8%	0	0%	10	4%	0	0%	3	1%	0	0%	2	1%	34	15%
116.02	3	3	2	70%	0	14%	0	0%	0	10%	0	0%	0	4%	0	0%	0	3%	1	30%
121	2	2,154	1,921	89%	11	1%	46	2%	132	6%	0	0%	26	1%	0	0%	18	1%	233	11%
121	4	81	63	77%	10	12%	0	0%	3	3%	0	0%	6	7%	2	2%	2	3%	18	23%
116.02	1	390	256	66%	54	14%	0	0%	45	12%	0	0%	24	6%	12	3%	10	3%	134	34%
20.19	2	98	79	80%	6	6%	0	0%	12	12%	0	0%	0	0%	0	0%	2	2%	20	20%
20.18	1	1,035	887	86%	89	9%	0	0%	46	4%	0	0%	13	1%	0	0%	0	0%	148	14%
20.18	3	192	146	76%	15	8%	0	0%	18	9%	0	0%	4	2%	0	0%	12	6%	46	24%



Appendix I: Environmental Justice Supporting Documentation

Geography		Total Population	White only		African-American or Black only		American Indian/ Native Alaskan only		Asian only		Native Hawaiian/ Pacific Islander only		Hispanic*		Other Race		Two or More Races		Minority Population**	
Census Tract	Block Group		#	%	#	%	#	%	#	%	#	%	#	%	#	%	#	%	#	%
20.19	1	70	31	45%	17	25%	2	2%	9	13%	0	0%	8	11%	3	5%	4	6%	39	55%
20.19	3	897	786	88%	30	3%	0	0%	13	1%	0	0%	68	8%	18	2%	9	1%	110	12%
TOTAL		5,465	4,640	85%	275	5%	48	1%	295	5%	0	0%	157	3%	35	1%	65	1%	826	15%
Leigh Village																				
20.18	1	68	58	86%	6	9%	0	0%	3	4%	0	0%	1	1%	0	0%	0	0%	10	14%
20.18	3	779	592	76%	62	8%	0	0%	72	9%	0	0%	18	2%	0	0%	47	6%	187	24%
20.18	2	647	415	64%	139	22%	2	0%	25	4%	0	0%	60	9%	50	8%	7	1%	232	36%
TOTAL		1,494	1,065	71%	207	14%	2	0%	100	7%	0	0%	79	5%	50	3%	53	4%	429	29%
US 15-501 Corridor																				
121	1	254	158	62%	39	15%	0	0%	40	16%	0	0%	13	5%	0	0%	5	2%	97	38%
112.04	2	4	4	99%	0	0%	0	0%	0	1%	0	0%	0	0%	0	0%	0	0%	0	1%
112.05	3	475	163	34%	58	12%	0	0%	93	20%	0	0%	157	33%	55	12%	3	1%	311	66%
20.17	3	965	726	75%	71	7%	0	0%	71	7%	0	0%	59	6%	34	4%	38	4%	239	25%
20.17	1	0	0	81%	0	3%	0	0%	0	10%	0	0%	0	3%	0	0%	0	3%	0	19%
20.17	2	999	847	85%	58	6%	0	0%	48	5%	0	0%	32	3%	0	0%	12	1%	152	15%
20.15	2	2,482	744	30%	743	30%	0	0%	96	4%	0	0%	824	33%	809	33%	50	2%	1,739	70%
20.16	1	3,089	650	21%	809	26%	0	0%	188	6%	0	0%	1,497	48%	744	24%	11	0%	2,439	79%
20.18	1	424	364	86%	36	9%	0	0%	19	4%	0	0%	6	1%	0	0%	0	0%	61	14%
6	3	0	0	100%	0	0%	0	0%	0	0%	0	0%	0	0%	0	0%	0	0%	-	0%
20.15	3	595	390	66%	120	20%	0	0%	12	2%	0	0%	73	12%	0	0%	73	12%	205	35%
20.16	2	1,845	598	32%	440	24%	0	0%	119	7%	0	0%	566	31%	206	11%	140	8%	1,247	68%
20.18	3	1	1	76%	0	8%	0	0%	0	9%	0	0%	0	2%	0	0%	0	6%	0	24%
20.18	2	2,173	1,393	64%	467	22%	6	0%	85	4%	0	0%	201	9%	167	8%	22	1%	781	36%
TOTAL		13,308	6,037	45%	2,841	21%	6	0%	771	6%	0	0%	3,428	26%	2,014	15%	355	3%	7,271	55%
Duke West Campus & Medical Center																				
20.17	1	95	77	81%	3	3%	0	0%	9	10%	0	0%	3	3%	0	0%	3	3%	18	19%



Appendix I: Environmental Justice Supporting Documentation

Geography		Total Population	White only		African-American or Black only		American Indian/ Native Alaskan only		Asian only		Native Hawaiian/ Pacific Islander only		Hispanic*		Other Race		Two or More Races		Minority Population**	
Census Tract	Block Group		#	%	#	%	#	%	#	%	#	%	#	%	#	%	#	%	#	%
20.17	2	0	0	85%	0	6%	0	0%	0	5%	0	0%	0	3%	0	0%	0	1%	0	15%
15.02	1	2,103	196	9%	865	41%	3	0%	31	2%	0	0%	1,005	48%	649	31%	34	2%	1,907	91%
5	1	682	210	31%	190	28%	0	0%	257	38%	0	0%	24	4%	26	4%	0	0%	473	69%
5	2	4	2	54%	1	26%	0	0%	0	2%	0	0%	1	18%	0	12%	0	4%	2	46%
15.01	1	2,721	1,378	51%	481	18%	27	1%	523	19%	0	0%	167	6%	78	3%	108	4%	1,343	49%
6	3	212	212	100%	0	0%	0	0%	0	0%	0	0%	0	0%	0	0%	0	0%	-	0%
15.02	3	1,665	347	21%	340	20%	0	0%	519	31%	0	0%	386	23%	319	19%	71	4%	1,318	79%
15.02	4	670	70	10%	396	59%	0	0%	0	0%	0	0%	204	31%	204	31%	0	0%	600	90%
15.02	2	605	400	66%	33	6%	0	0%	140	23%	0	0%	32	5%	0	0%	12	2%	205	34%
TOTAL		8,757	2,892	33%	2,309	26%	30	0%	1,478	17%	0	0%	1,821	21%	1,277	15%	228	3%	5,865	67%
Old West Durham / Duke East Campus																				
15.02	1	586	55	9%	241	41%	1	0%	8	2%	0	0%	280	48%	181	31%	10	2%	531	91%
4.02	1	1,747	1,189	68%	129	7%	59	3%	200	11%	0	0%	103	6%	49	3%	31	2%	558	32%
5	1	223	68	31%	62	28%	0	0%	84	38%	0	0%	8	4%	8	4%	0	0%	154	69%
4.01	3	2	2	89%	0	2%	0	0%	0	2%	0	0%	0	2%	0	7%	0	0%	0	11%
5	2	403	218	54%	105	26%	0	0%	8	2%	0	0%	73	18%	47	12%	16	4%	185	46%
3.02	3	598	349	58%	99	17%	0	0%	12	2%	0	0%	112	19%	32	5%	26	4%	250	42%
5	3	210	21	10%	145	69%	0	0%	12	6%	0	0%	13	6%	9	4%	19	9%	190	90%
15.03	1	1,880	853	45%	360	19%	9	1%	436	23%	3	0%	57	3%	113	6%	85	5%	1,028	55%
22	1	295	146	50%	77	26%	0	0%	7	3%	0	0%	32	11%	24	8%	29	10%	148	50%
6	3	0	0	100%	0	0%	0	0%	0	0%	0	0%	0	0%	0	0%	0	0%	-	0%
15.02	3	2	0	21%	0	20%	0	0%	1	31%	0	0%	0	23%	0	19%	0	4%	1	79%
3.01	3	100	67	67%	5	5%	0	0%	13	13%	0	0%	14	14%	1	1%	2	2%	33	33%
7	1	159	73	46%	65	41%	0	0%	0	0%	0	0%	23	14%	0	0%	16	10%	85	54%
TOTAL		6,204	3,041	49%	1,288	21%	69	1%	781	13%	3	0%	715	12%	466	8%	234	4%	3,164	51%
Downtown Durham																				



Appendix I: Environmental Justice Supporting Documentation

Geography		Total Population	White only		African-American or Black only		American Indian/ Native Alaskan only		Asian only		Native Hawaiian/ Pacific Islander only		Hispanic*		Other Race		Two or More Races		Minority Population**	
Census Tract	Block Group		#	%	#	%	#	%	#	%	#	%	#	%	#	%	#	%	#	%
11	2	171	15	9%	138	81%	0	0%	0	0%	0	0%	17	10%	13	8%	0	0%	155	91%
11	1	261	26	10%	197	75%	0	0%	0	0%	0	0%	31	12%	20	8%	8	3%	235	90%
5	2	0	0	54%	0	26%	0	0%	0	2%	0	0%	0	18%	0	12%	0	4%	0	46%
3.02	3	9	5	58%	2	17%	0	0%	0	2%	0	0%	2	19%	0	5%	0	4%	4	42%
22	1	960	476	50%	249	26%	0	0%	24	3%	0	0%	103	11%	78	8%	96	10%	484	50%
7	1	512	237	46%	211	41%	0	0%	0	0%	0	0%	73	14%	0	0%	51	10%	275	54%
23	1	765	53	7%	528	69%	0	0%	0	0%	0	0%	29	4%	6	1%	161	21%	712	93%
23	2	77	0	0%	11	15%	0	0%	0	0%	0	0%	65	86%	65	86%	0	0%	77	100%
TOTAL		2,756	814	30%	1,336	49%	0	0%	24	1%	0	0%	320	12%	182	7%	316	12%	1,942	71%
East Durham																				
10.01	2	350	19	5%	266	76%	0	0%	0	0%	0	0%	66	19%	66	19%	0	0%	331	95%
11	2	1,082	98	9%	874	81%	0	0%	0	0%	0	0%	111	10%	82	8%	0	0%	985	91%
14	2	1,957	0	0%	1,845	94%	0	0%	0	0%	0	0%	159	8%	91	5%	21	1%	1,957	100%
11	1	255	26	10%	192	75%	0	0%	0	0%	0	0%	30	12%	19	8%	8	3%	229	90%
10.01	1	19	1	4%	12	64%	0	0%	0	0%	0	0%	6	29%	3	16%	1	4%	18	96%
13.03	2	10	0	0%	10	99%	0	0%	0	0%	0	0%	0	0%	0	0%	0	2%	10	100%
10.01	3	741	29	4%	503	68%	0	0%	22	3%	0	0%	180	24%	180	24%	7	1%	712	96%
14	1	906	8	1%	898	99%	0	0%	0	0%	0	0%	0	0%	0	0%	0	0%	898	99%
13.03	1	2,012	329	16%	1,501	75%	0	0%	80	4%	0	0%	79	4%	48	2%	28	1%	1,683	84%
13.01	1	920	14	2%	813	88%	0	0%	0	0%	0	0%	18	2%	0	0%	93	10%	906	99%
20.09	1	202	1	1%	146	73%	2	1%	0	0%	0	0%	52	26%	32	16%	3	1%	201	100%
23	1	1	0	7%	1	69%	0	0%	0	0%	0	0%	0	4%	0	1%	0	21%	1	93%
23	2	68	0	0%	10	15%	0	0%	0	0%	0	0%	59	86%	59	86%	0	0%	68	100%
TOTAL		8,523	523	6%	7,071	83%	2	0%	102	1%	0	0%	758	9%	580	7%	0	0%	8,000	94%
Study Area		60,282	29,430	49%	16,682	28%	159	0%	4,759	8%	3	0%	7,836	13%	4,827	8%	160	0%	30,852	51%



Appendix I: Environmental Justice Supporting Documentation

Geography		Total Population	White only		African-American or Black only		American Indian/ Native Alaskan only		Asian only		Native Hawaiian/ Pacific Islander only		Hispanic*		Other Race		Two or More Races		Minority Population**	
			#	%	#	%	#	%	#	%	#	%	#	%	#	%	#	%	#	%
Orange County		131,856	93,974	71%	16,110	12%	460	0%	8,890	7%	3	0%	10,229	8%	3,793	3%	2,580	2%	37,882	29%
Durham County		263,862	112,696	43%	98,207	37%	775	0%	11,638	4%	99	0%	34,123	13%	20,156	8%	7,349	3%	151,166	57%
Two-County Region		395,718	206,670	52%	114,317	29%	1,235	0%	20,528	5%	102	0%	44,352	11%	23,949	6%	9,929	3%	189,048	48%

*The US Census Bureau defines Hispanic or Latino as a person of Mexican, Puerto Rican, Cuban, South or Central American, or other Spanish culture or origin, regardless of race. Because Hispanics may be any race, data for Hispanics overlap data for racial groups.

** Minority population includes all races that are non-white and Hispanic populations that are also White.

Source: US Census Bureau, American Community Survey 5-year Estimates (2007-2011), Table B03002, "Hispanic or Latino Origin by Race."