

Appendix J.3b: Public Meeting Materials

June 2015

Durham-Orange Light Rail Transit Project



August 2015

May 15, 2015

Dear Property Owner, Facility Manager/Office Director, and Tenant(s):

As part of the preliminary work for the proposed Durham-Orange Light Rail Transit (D-O LRT) Project, we are again contacting people who may be directly impacted by the proposed alignment of the D-O LRT Project. Last year you were contacted by Triangle Transit in regards to your proximity to one or more of the alternatives of the Project. Since that time we have changed our name to GoTriangle as part of a rebranding effort done in concert with other transit providers in the region.

While our name is different, we are still committed to ensuring your voices and opinions are heard and documented as we continue working on the proposed D-O LRT Project. We would like to meet with all Property Owners, Facility Managers/Office Directors, and Tenants to discuss the details of the proposed D-O LRT Project. We want to share with you the proposed D-O LRT alignment, station locations and the project timeline, and answer any questions you may have concerning construction, right-of-way requirements, and potential impacts to your property and/or business.

By 2035, the Durham-Chapel Hill area is expected to add nearly 200,000 residents and approximately 120,000 jobs. Light rail transit between the three main activity centers in Durham and Chapel Hill – UNC (Hospitals and University), Duke (Medical Center and University), and downtown Durham – has been proposed as a means to support this growth and provide an additional transportation alternative. As you know, in 2011, Durham County residents demonstrated their support for transit initiatives by approving the transit sales tax. In 2012, Orange County residents concurred, approving a transit tax of their own. GoTriangle is pleased to report that planning for the proposed D-O LRT Project has reached the Project Development phase, and we are studying the social, environmental, and human impacts of the proposed D-O LRT Project. You may learn more about the proposed light rail transit project at: <http://ourtransitfuture.com/projects/durham-orange/>.

Please join us for a D-O LRT Project update meeting that will focus on the results of the environmental studies for the entire proposed D-O LRT Project. The meetings will be held at:

- Town of Chapel Hill Public Library**
100 Library Drive, Chapel Hill, NC 27514
Tuesday, June 2, from 4:00 pm – 7:00 pm
- Durham Station**
515 W. Pettigrew Street, Durham, NC 27701
Thursday, June 4, from 4:00 pm – 7:00 pm
- John Avery Boys and Girls Club**
808 E. Pettigrew Street, Durham, NC 27701
Saturday, June 6, from 2:00 pm – 5:00 pm

These meetings are very important to the future development and implementation of the proposed D-O LRT Project. If you have any questions, please contact Jeffrey Sullivan jsullivan@gotriangle.org or (919) 485-7490.

Sincerely,



David D. King
General Manager
GoTriangle



PRESENTING: LIGHT RAIL

Be the first to review the data gathered during our environmental studies



Learn about the D-O LRT Project: Updated Data and Next Steps

Join us at one of three open house meetings to review data for the proposed D-O LRT project. Drop into a meeting to review updated information for the entire D-O LRT alignment, including the **Ninth Street station** to the **Alston Avenue station**, and find out what happens next.



Chapel Hill Public Library | 4-7 p.m.

100 Library Drive
Chapel Hill, NC 27514

Presentations will be held at 4:15, 5:15 and 6:15.



Durham Station | 4-7 p.m.

515 W. Pettigrew Street
Durham, NC 27701

Presentations will be held at 4:15, 5:15 and 6:15.



John Avery Boys & Girls Club | 2-5 p.m.

808 E. Pettigrew Street
Durham, NC 27701

Presentations will be held at 2:15, 3:15 and 4:15.

All public meetings are held in ADA accessible facilities. Any individual who requires special assistance in order to participate in a public meeting is urged to contact Triangle Transit at 1-800-816-7817 at least one week prior to the first meeting to make such arrangements.

Todas las reuniones públicas se llevan a cabo en las instalaciones de fácil acceso de ADA. Toda persona que necesite ayuda especial para poder participar en una reunión pública, debe ponerse en contacto con Triangle Transit al 1-800-816-7817 con al menos una semana de anticipación antes de la primera reunión, para hacer este tipo de pedidos.

CONNECTING TO LIGHT RAIL

How to get to where you want to be

CAR



"Park and Ride"
"Kiss and Ride"

BUS



BUS CONNECTIONS:
Take a bus to and from a
local light rail station

BIKE

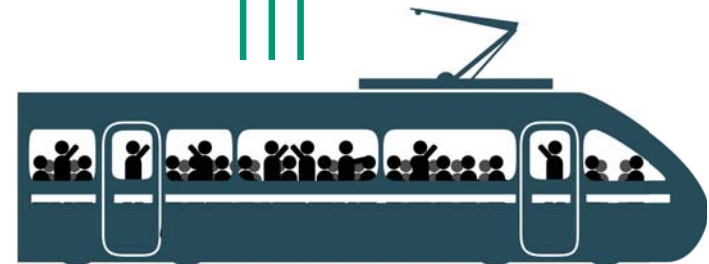


Bikes will be allowed on
board. Bike racks will also be
available at stations.

WALK



Station area planning is based
on a 1/2 mile walk to or from a
station.



LIGHT RAIL TRANSIT

The Durham Orange Light Rail
project has nine stations with
Park and Ride areas.

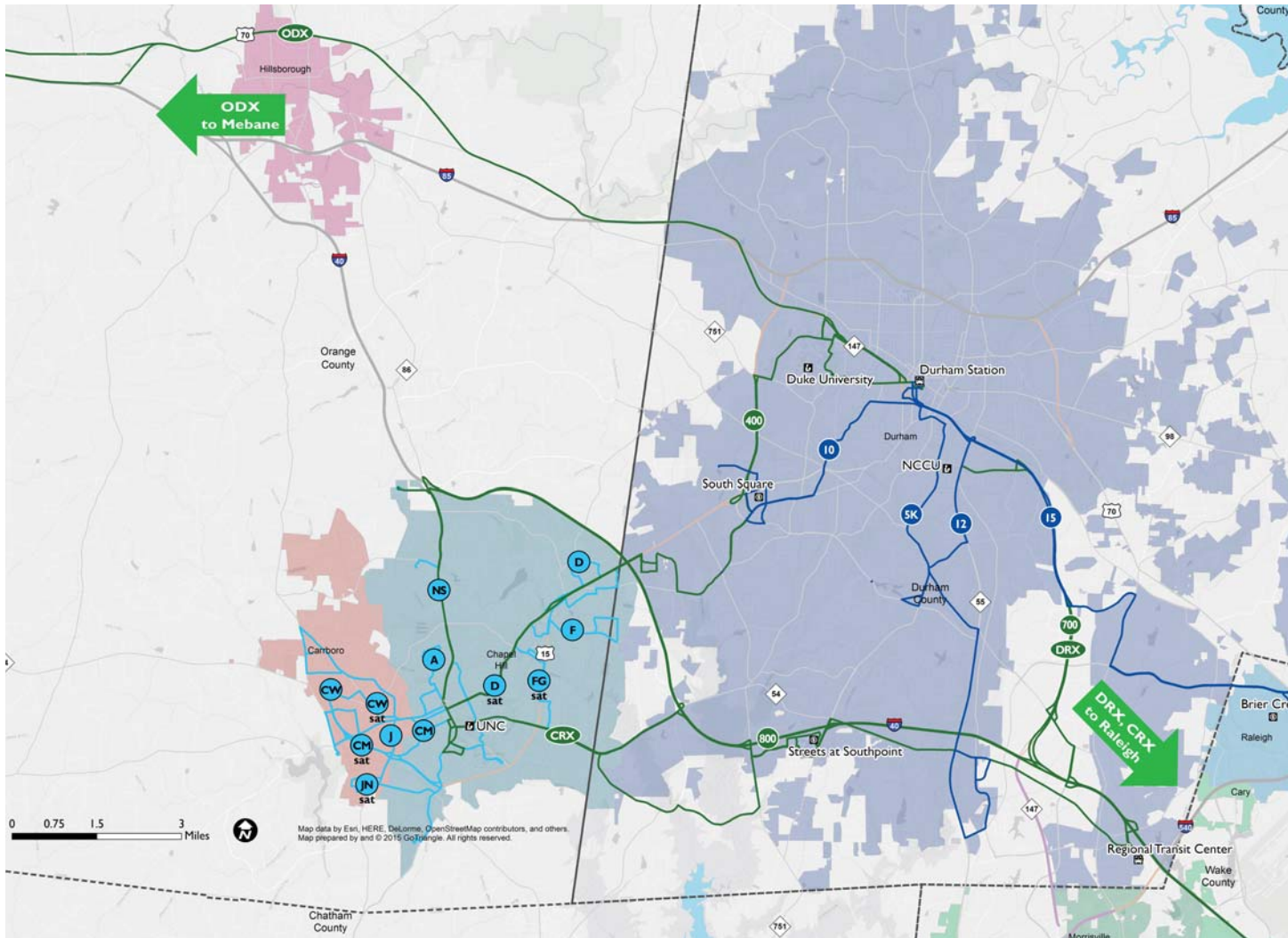
The Durham-Orange Light Rail Transit
Project is part of a larger public transit
investment in our community. Capital
and operating improvements will
continue for the bus system. Bus
network changes to serve future light
rail stations are planned closer to the
implementation date of the project.

We are working with your local planning department on
station area infrastructure including Bike/Pedestrian paths.



DURHAM-ORANGE BUS SERVICE ENHANCEMENTS

2013 – 2015



GoTriangle

- Peak-hour service on Route 800 every 15 minutes between Streets at Southpoint and UNC
- New Sunday service and extended Saturday service on Routes 400, 700, and 800 connecting Durham, Chapel Hill, and the Regional Transit Center, with connections to RDU airport and Raleigh on Route 100
- New Route ODX peak-hour express service connecting Mebane, Efland, and Hillsborough with downtown Durham and Duke Medical Center
- Additional trips on Route CRX and DRX express routes between Durham/Chapel Hill and Raleigh (coming this fall)

GoDurham

- Frequent afternoon service every 15 minutes on Route 10 to South Square and Route 5 along Fayetteville St -- with all-day frequent service coming this fall (proposed)
- Consistent service every 30 minutes on Route 12 to NC55/54.
- Consistent all-day service on Route 15 to Brier Creek.

Chapel Hill Transit

- New year-round evening and night service on Routes CM, CW, D and J, even when students are out on break.
- Additional service on Routes A, D, F, G, J, and NS
- Additional Saturday service on Saturday Routes CM, CW, D, FG, and JN





Conceptual only, subject to change without notice.

Pettigrew & Mangum Streets



Conceptual only, subject to change without notice.

Dillard Street Station

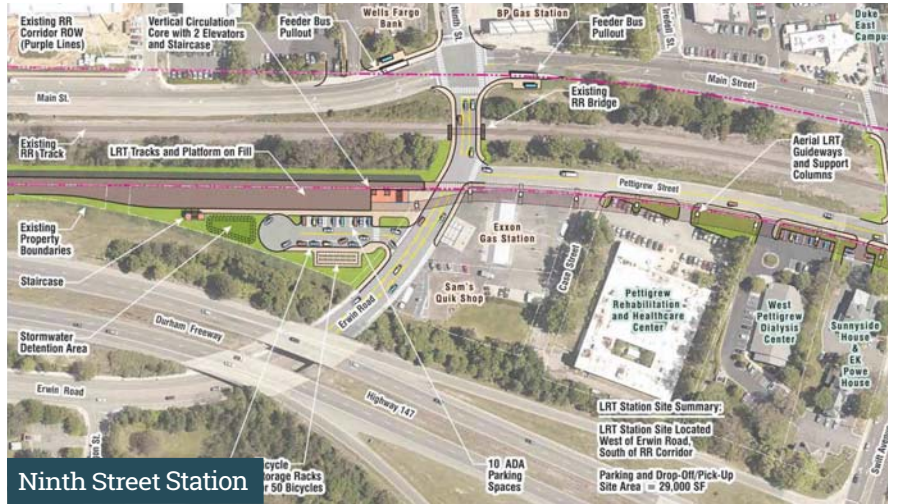
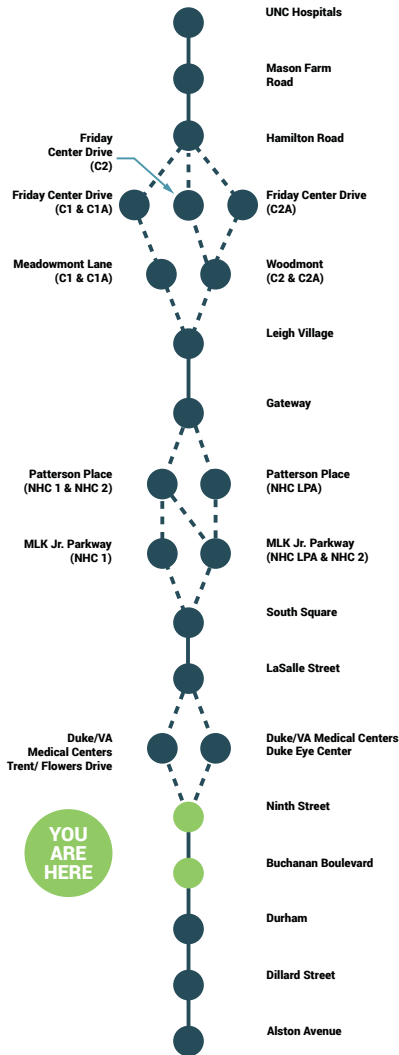
Station Plans & Renderings

9th Street & Buchanan Boulevard

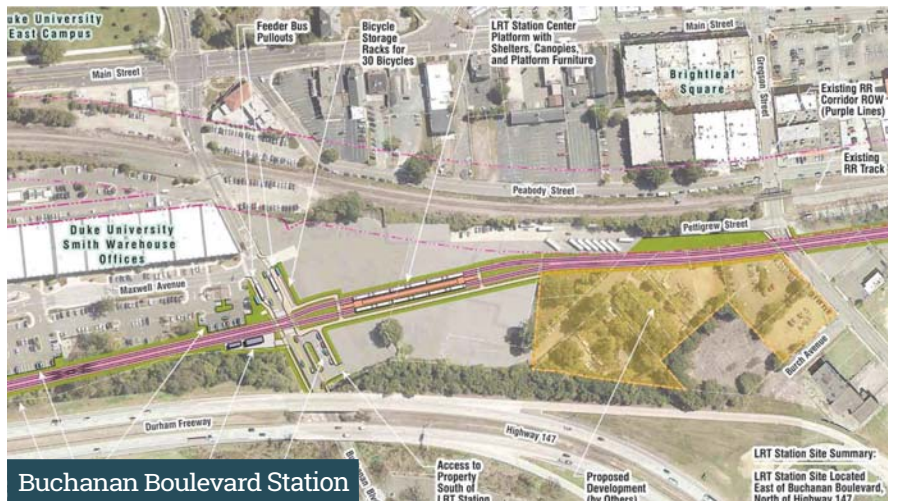


Ninth Street Station

Conceptual only, subject to change without notice



Ninth Street Station

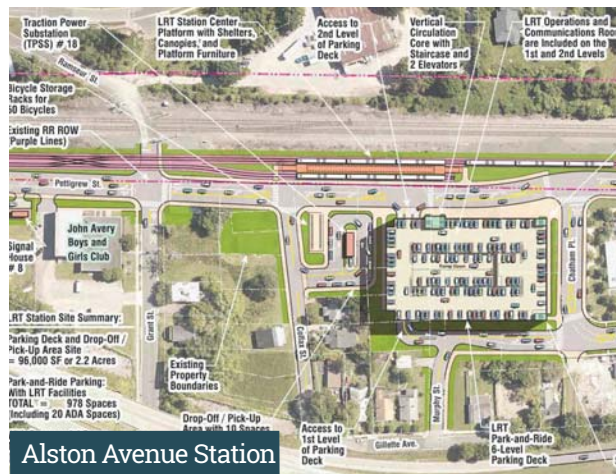
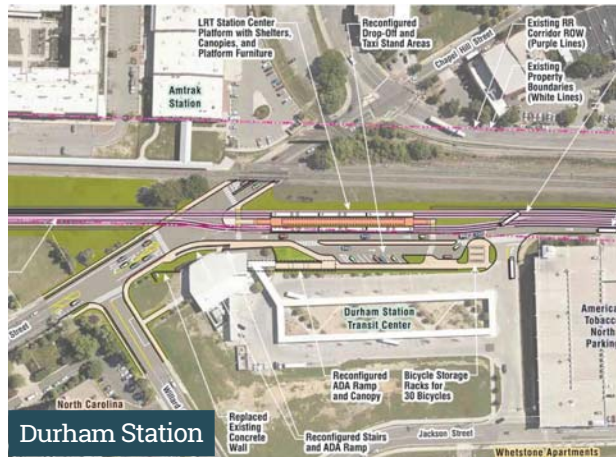
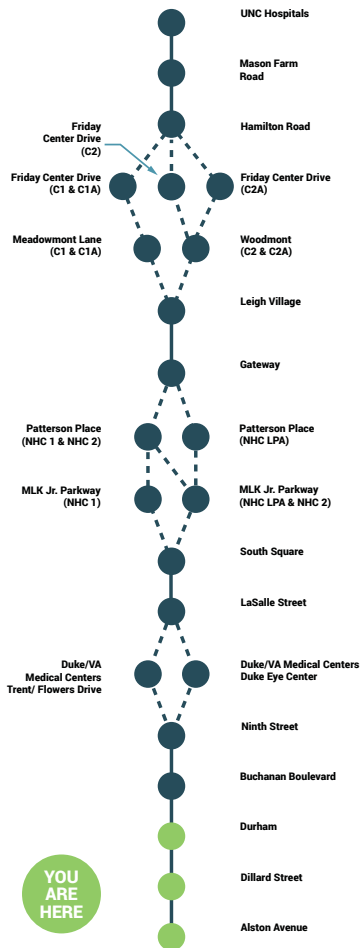


Buchanan Boulevard Station



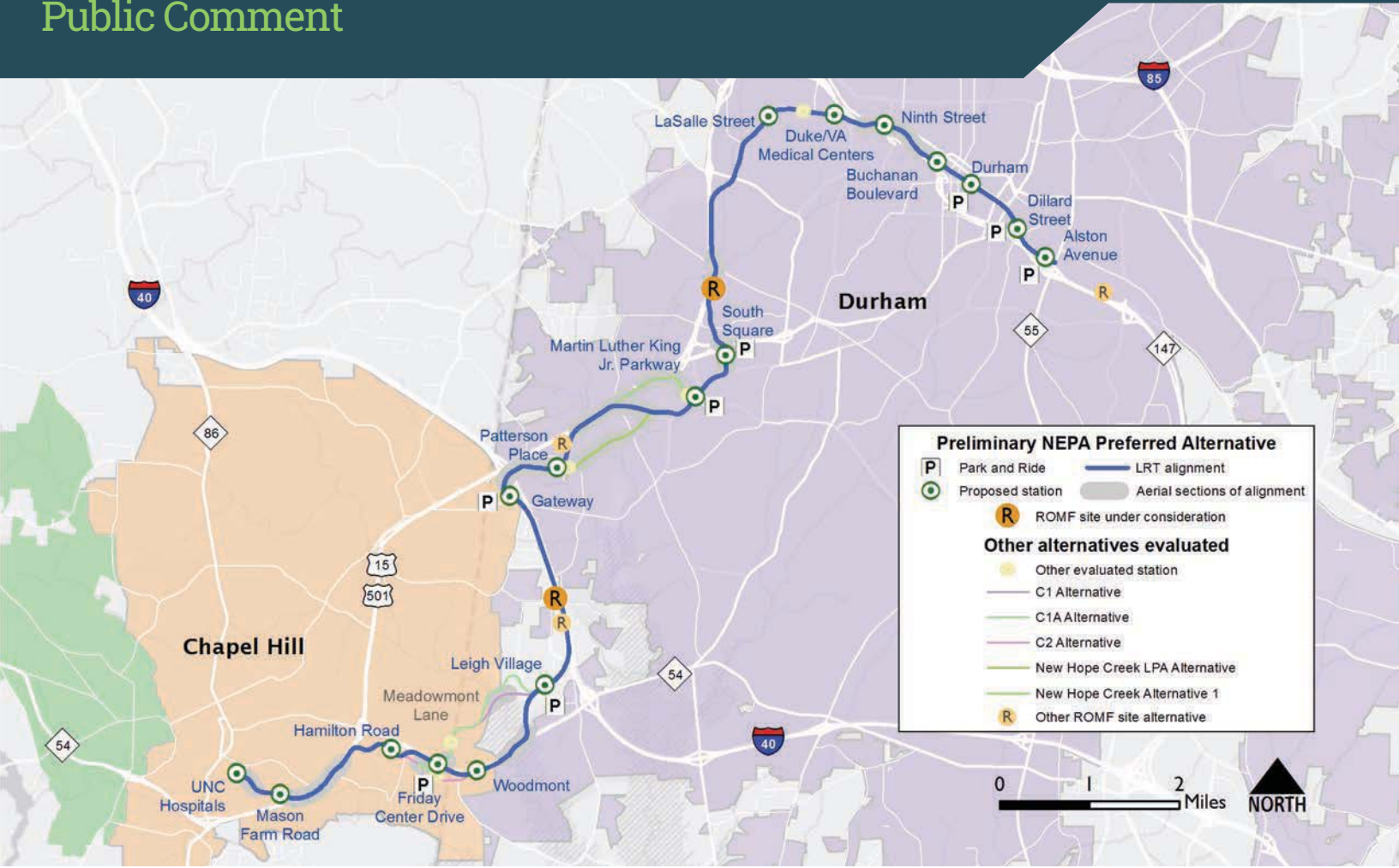
Station Plans & Renderings

Durham, Dillard Street & Alston Avenue



Durham-Orange Light Rail Transit Project

Public Comment



1. Tell us what you like about the project. Circle specific parts of the project as appropriate.

There are 4 ways to return your comments: 1) Leave this form at a public meeting;; 2) Email comments to info@ourtransitfuture.com; 3) Mail your form to: Our Transit Future, P.O. Box 530, Morrisville, NC 27560; or 4) Call our toll-free hotline at (800) 816-7817. Forms received will be added to our comments database within 5 days of receipt.

Please Turn Over →

Durham-Orange Light Rail Transit Project

Public Comment

Please
return this
form to
GoTriangle
no later than
July 6.

2. Tell us what you dislike about the project and why.

3. Please feel free to share other comments.

Name:	Email:	Telephone:
Mailing Address:	City:	Zip Code:
Organization:		

There are 4 ways to return your comments: 1) Leave this form at a public meeting; 2) Email comments to info@ourtransitfuture.com; 3) Mail your form to: Our Transit Future, P.O. Box 530, Morrisville, NC 27560; or 4) Call our toll-free hotline at (800) 816-7817. Forms received will be added to our comments database within 5 days of receipt.

Proyecto de Tránsito de Tren Ligero Durham-Orange

Comentarios del público



1. Díganos lo que le gusta sobre el proyecto. Circule las partes específicas del proyecto, según sea apropiado.

Hay 4 maneras en que puede devolvemos sus opiniones: 1) Entréguenos este formulario; 2) Envíe sus preferencias por correo electrónico a info@ourtransitfuture.com; 3) Envíe este formulario por correo regular a: Our Transit Future, P.O. Box 530, Morrisville, NC 27560; ó 4) Llame a nuestra línea de atención gratuita (800) 816-7817. Los formularios recibidos serán agregados a nuestra base de datos de comentarios en los 5 días próximos a su recepción.

más →

Durham-Orange Light Rail Transit Project

Public Comment

Por favor
regrese este
formulario a
GoTriangle a más
tardar el 6 de
julio.

2. Díganos lo que no le gusta sobre el proyecto y por qué..

3. Por favor tenga la libertad de compartir con nosotros otros comentarios.

Name:	Email:	Telephone:
Mailing Address:	City:	Zip Code:
Organization:		

Hay 4 maneras en que puede devolvernos sus opiniones: 1) Entréguenos este formulario; 2) Envíe sus preferencias por correo electrónico a info@ourtransitfuture.com; 3) Envíe este formulario por correo regular a: Our Transit Future, P.O. Box 530, Morrisville, NC 27560; ó 4) Llame a nuestra línea de atención gratuita (800) 816-7817. Los formularios recibidos serán agregados a nuestra base de datos de comentarios en los 5 días próximos a su recepción.

A Common Choice

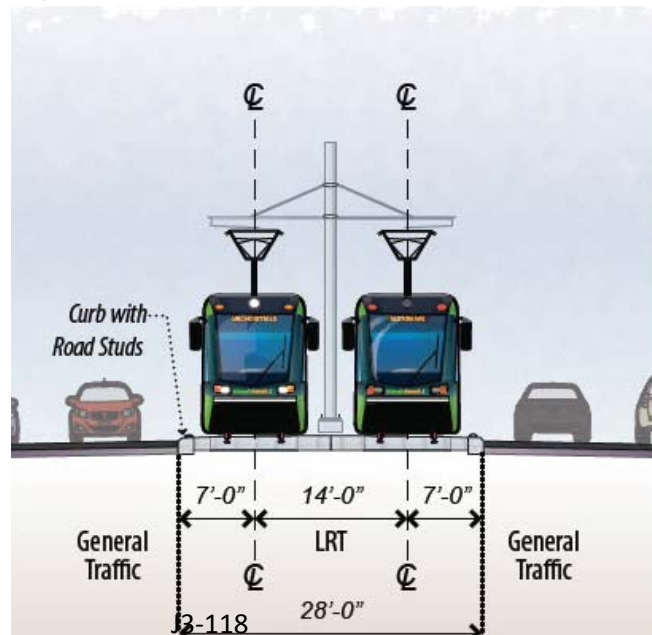
Light Rail Transit (LRT) is used to provide high frequency rail transit service and operates in more than 20 urban areas in the United States and Canada.

Systems include Charlotte, Norfolk, Baltimore, Dallas, St. Louis, Minneapolis, Denver, Salt Lake City, San Diego, San Jose, Portland and Ottawa.

Typical Service Characteristics

Corridor Length:	5 – 20 miles
Station Spacing	.25 – 2 miles
Service Frequency	5 – 15 min. peak 10 – 20 min. off-peak
Operating Speed	55 mph
Top Operating Speed	65 mph
Avg. Capacity	125 (40-60 seated) per/car

Typical Cross Section



Durham-Orange Light Rail Project

17 miles serving 17 stations between UNC Hospitals in Chapel Hill and Alston Avenue in East Durham.

Estimated Travel Time: 42-44 minutes.

Hours of Operation: Runs 7 days a week, approx. 18 hrs per day

Frequency: 10 min – peak
20 min – off peak/weekends

Estimated Cost: \$1.5 billion

Funding Breakdown:

Local: 25%, State: 25%, Federal:50%

For more information, visit:

>> www.ourtransitfuture.com

Comment

✉ P.O. Box 530 | Morrisville, NC | 27560

☎ 800.816.7817

@ info@ourtransitfuture.com

© GoTriangle 2015

WHAT IS LIGHT RAIL?



WHAT IS LIGHT RAIL?

Why Light Rail?

Travel between Durham and Chapel Hill is becoming increasingly difficult as more and more people move to the Triangle.

High growth rates continue to strain our transportation system – roadways and public transit – increase travel times and decrease reliability.

We need a permanent solution that:

- **Enhances mobility**
- **Expands transit options between Durham and Chapel Hill**
- **Serves populations with high propensity for transit use**
- **Fosters compact development**

LRT was chosen for the Durham-Orange corridor because this technology:

- Connects residential, educational and major employment centers throughout the corridor
- Serves the people in the Durham-Orange corridor more cost-effectively in the long term
- Serves a corridor with some of the highest projected trips per acre in the region
- Supports land use patterns that require closely spaced stops, best served by nimble vehicles that are able to accelerate quickly
- Provides solid anchors needed to shape land use along this critical corridor
- Provides high-frequency rail service shown to support transit-oriented development



Light Rail Vehicles (LRVs) are electrically powered vehicles and operate on their own tracks, in a dedicated right-of-way.



LRVs can navigate tight turns and accelerate and decelerate more quickly than vehicles like Diesel Multiple Units and Amtrak trains.



Light Rail service can accommodate increases in ridership by adding more train cars.



LRVs are designed to serve corridors with narrow rights-of-way and frequent stops.



LRT can operate adjacent to regular vehicular traffic.



LRVs are ADA accessible, and can accommodate bicycles, wheelchairs and strollers.

Noise

Unwanted Sound

Sounds that interfere with an activity or disturb the person hearing them. Typically measured in decibels (dB), sound-levels in our studies are weighted to reflect human perceptions (humans are more sensitive to middle and high-frequency sounds) and are measured in dBA

Land Use Categories for Noise and Vibration Impacts

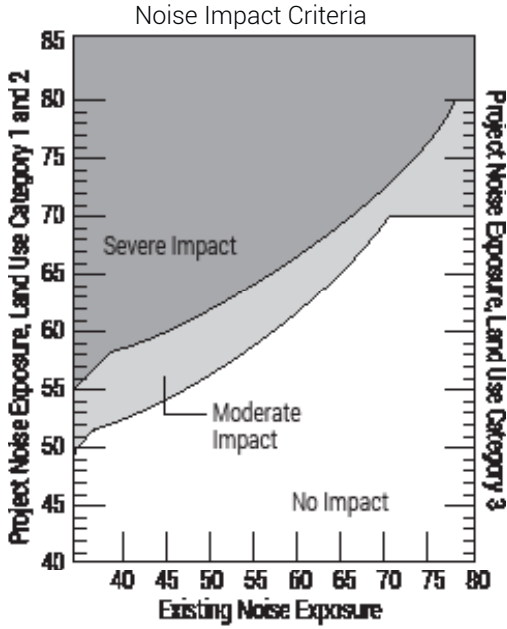
- 1
- 2
- 3
- 4
- 5
- 6

- 1 High Sensitivity: Buildings where low ambient vibration is essential for operations. (e.g. high-tech manufacturing factories, laboratories with sensitive equipment)
- 2 Residential: Residences and buildings where people normally sleep. (e.g. homes, hospitals, hotels)
- 3 Institutional: Places where meditation, speeches and reading are normally performed. (e.g. schools, churches, libraries.)
- 4 Concert Halls, TV/Recording Studios
- 5 Auditoriums
- 6 Theaters

Vi•bra•tion

"Ground-Bourne Vibration" is the transmission of energy through the earth, sensed as motion of the floors or walls inside a building.

"Ground-Bourne Noise" is low-pitched rumbling that results from "ground-bourne vibration". This noise can only occur inside a building. Vibration is also measured in decibels (dB).



The criteria do not apply to most commercial and industrial land uses because these activities are generally compatible with higher noise levels. They do apply to business land uses that depend on quiet as an important part of operations (e.g. sound and motion picture studios).

If you want more information about noise and vibration, contact us or visit these sites to research for yourself:



For more information, visit:
 >> www.ourtransitfuture.com

- ✉ P.O. Box 530 | Morrisville, NC | 27560
- ☎ 800.816.7817
- @ info@ourtransitfuture.com



Where does Noise Come From?

While the vehicle is in motion...

Wheel Rolling on Rail.....	Noise increases with speed and depends on the condition of the wheels and rails. Can be controlled with regular system maintenance.
Vehicle Propulsion System.....	Increases while accelerating and at higher speeds. Can be controlled by vehicle procurement specification. Force ventilated systems are generally quieter than self-ventilated systems when operating on an embedded track.
Auxiliary Equipment for Vehicle & Ventilation...	Usually not a significant source of noise. Can be controlled by vehicle procurement specifications.
Wheel Squeal.....	Can occur on tight curves of less than 1000 feet radii. Can be controlled by wheel and rail treatments.
Special Trackwork.....	Impact noises occur when wheels encounter discontinuity in tracks such as rail joints, turnouts, or switches, where trains change tracks.
Brakes.....	Occasional squeal when stopping
Horns and Whistles.....	Used infrequently as warning device for pedestrians and at intersections
Bells.....	Used sometimes as warning device at grade crossings and as the train approaches the station.

While the vehicle is stopped...

Auxiliary Equipment for Vehicle & Ventilation	Dominant source of noise for stationary vehicle. Controlled by vehicle procurement specifications.
---	--

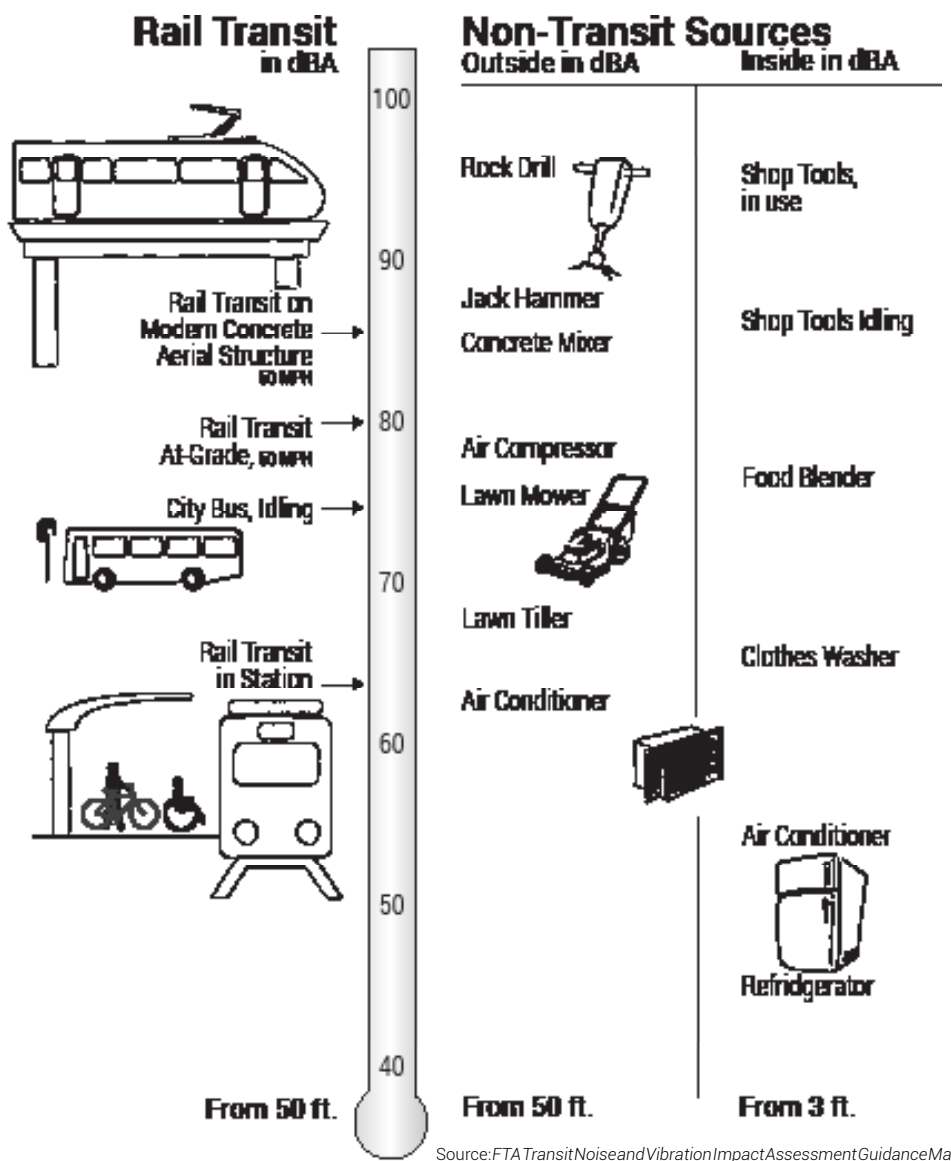
At Rail and Operations Maintenance Facilities...

Auxiliary Equipment for Vehicle & Ventilation	Dominant source of noise for stationary vehicle. Controlled by vehicle procurement specifications.
---	--

At Traction Power Substations...

Transformers	Usually not a significant source of noise for Light Rail
--------------	--

How Loud is it?



Source:FTA Transit Noise and Vibration Impact Assessment Guidance Manual

RAIL OPERATIONS AND MAINTENANCE FACILITY (ROMF)

Farrington Road ROMF



FAST FACTS

Size: 25 Acres

Zoning: Residential, Suburban Multi-family

Current Land Use: Residential - single family homes

Current Employment Served: Fewer than 25 employees

DEMOGRAPHICS

Minority Population (%)	29%
Population Below Poverty	15%
Zero Car Households	5%
Limited English Proficiency	5%

IMPACTS TO NATURAL RESOURCES

Total Acres:	25
Bottomland:	0
Alluvial:	0
Mesic Mixed:	9
Maintained/Disturbed:	16
Protected Species:	0
Streams: (Linear Feet)	638
Riparian Zone 1 (acres):	(1.0)
Riparian Zone 2 (acres):	(0.9)
Wetlands [# (acres)]:	1 (0.3)
Ponds [# (acres)]:	0
Floodplain [100-Year (acres)]:	0
Floodway (acres):	0

IMPACTS TO AREA ECONOMICS

Full Acquisitions:	11
Partial Acquisitions:	0
Existing Jobs:	Fewer than 25
Hazardous, Contaminated & Regulated Materials High Risk Sites:	0
Hazardous, Contaminated & Regulated Materials Medium Risk Sites:	0

IMPACTS TO COMMUNITY RESOURCES

Community Resources:	No Impacts
Historic Resources:	TBD
Visual and Aesthetic:	Low impact
Archaeological Sites:	1
Acres of Parklands:	0
Recreational Trails:	0
Noise:	0
Vibration:	0



CAPITAL COST (2015 Dollars): \$62-93 Million Dollars

RAIL OPERATIONS AND MAINTENANCE FACILITY (ROMF)

Cornwallis Road ROMF



FAST FACTS

Size: 20 Acres
Zoning: Commercial General
Current Land Use: Commercial / Warehouse, Vacant
Current Employment Served: Less than 25 employees

DEMOGRAPHICS

Minority Population (%)	55%
Population Below Poverty	24%
Zero Car Households	12%
Limited English Proficiency	16%

IMPACTS TO NATURAL RESOURCES

Total Acres of Biotic Resources:	20
Bottomland:	0
Alluvial:	1
Mesic Mixed:	12
Maintained/Disturbed:	7
Protected Species:	0
Streams: (linear feet)	154
Riparian Zone 1 (acres):	(0)
Riparian Zone 2 (acres):	(0.03)
Wetlands [# (acres)]:	1 (0.1)
Ponds [# (acres)]:	0
Floodplain [100-Year (acres)]:	0.1
Floodway (acres):	0.2

IMPACTS TO AREA ECONOMICS

Full Acquisitions:	1
Partial Acquisitions:	0
Existing Jobs:	Fewer than 25
Hazardous, Contaminated & Regulated Materials High Risk Sites:	0
Hazardous, Contaminated & Regulated Materials Medium Risk Sites:	1

IMPACTS TO COMMUNITY RESOURCES

Visual and Aesthetic:	Moderate-High impact
Noise:	Low/No Impacts
Vibration:	Low/No Impacts
Community Resources:	No Impacts
Acres of Parklands:	0
Recreational Trails:	0
Historic Resources:	TBD
Archaeological Sites:	0



CAPITAL COST (2015 Dollars): \$74-111 Million Dollars



Public Information Session

Durham-Orange Light Rail Transit Project

June 2015





High-Growth Triangle Region



- Durham & Orange Corridor
 - 175,000 people (2005)
 - 231,000 people (2035)
- 3 Major Universities
- 3 Major Medical Centers
- Hub of innovation and entrepreneurship
- Abundant parks, cultural, culinary, artistic & historical resources



DukeMedicine



U.S. Department
of Veterans Affairs



Explosive Growth



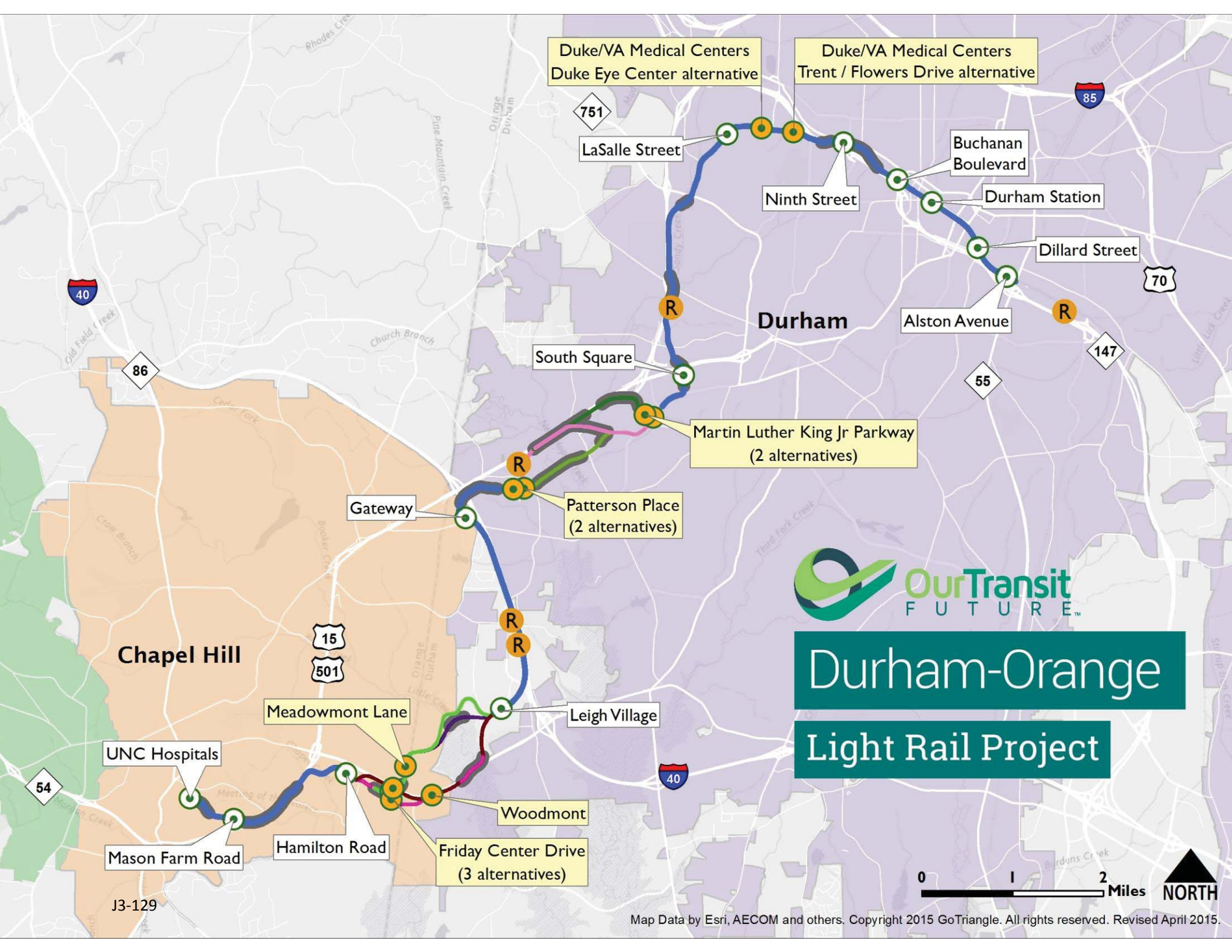
- Led to more congestion, increased travel times & sprawling development
- Outpacing our ability to repair, replace and expand roadway network
- Transit systems operating close to maximum capacity
 - 84 buses per hour at UNC Hospitals
 - 46 buses per hour at Duke University and Durham VA Medical Centers



What We Need



- A long term solution that
 - Provides convenient and accessible transit service
 - Provides a competitive and reliable alternative to congested roadways
 - Seamlessly serves many popular destinations in Durham and Chapel Hill
 - Fosters growth, compact development and economic development along a high-capacity transportation network



Duke/VA Medical Centers
Duke Eye Center alternative

Duke/VA Medical Centers
Trent / Flowers Drive alternative

751
LaSalle Street

Ninth Street

Buchanan
Boulevard

Durham Station

Dillard Street

Alston Avenue

Durham

South Square

Martin Luther King Jr Parkway
(2 alternatives)

Patterson Place
(2 alternatives)

Gateway



Durham-Orange

Light Rail Project

Chapel Hill

Meadowmont Lane

Leigh Village

UNC Hospitals

Woodmont

Mason Farm Road

Hamilton Road

Friday Center Drive
(3 alternatives)



Our Project



- 17-miles serving 17 stations of currently developed and ready to be developed areas
- Electrically powered system that runs in a dedicated guideway
- Travels between UNC Hospitals & Alston Avenue in ~42 min
- Operates 7 days a week
 - 10 min during peak times
 - 20 min off-peak and on weekends





Courtesy of Charlotte Area Transit System



Courtesy of Norfolk TIDE: LRT at Intersection



CATS Vehicle Maintenance Facility



CATS Station Platform



What Light Rail Brings to Communities



- Consistent, reliable transportation
 - Often accompanied with other service and capital improvements
- Increased Development Activity
 - Property values around stations often increase
 - Investments made in infrastructure around stations
- Economic Opportunity
 - Jobs during construction period
 - Jobs when operating and maintaining system

Morning Rush Hour Travel Times



Origin	Destination	Bus Today	Car Today	Light Rail 2025 & beyond
Alston Avenue	Patterson Place	51 min.	14-18 min.	27 min.
Leigh Village	UNC Hospitals	28 min.	10-18 min.	12 min.
Gateway Station	Downtown Durham	51 min.	14-20 min.	28 min.
Woodmont Station	Duke/VA	69 min.	16-26 min.	24 min.
Ninth Street	UNC Hospitals	69 min.	22-35 min.	34 min.
MLK Jr. Parkway	Downtown Durham	29 min.	9-12 min.	17 min.

Project Timeline



We are here



2014-2016



2016-2019



2019-2026

**Project
Development**

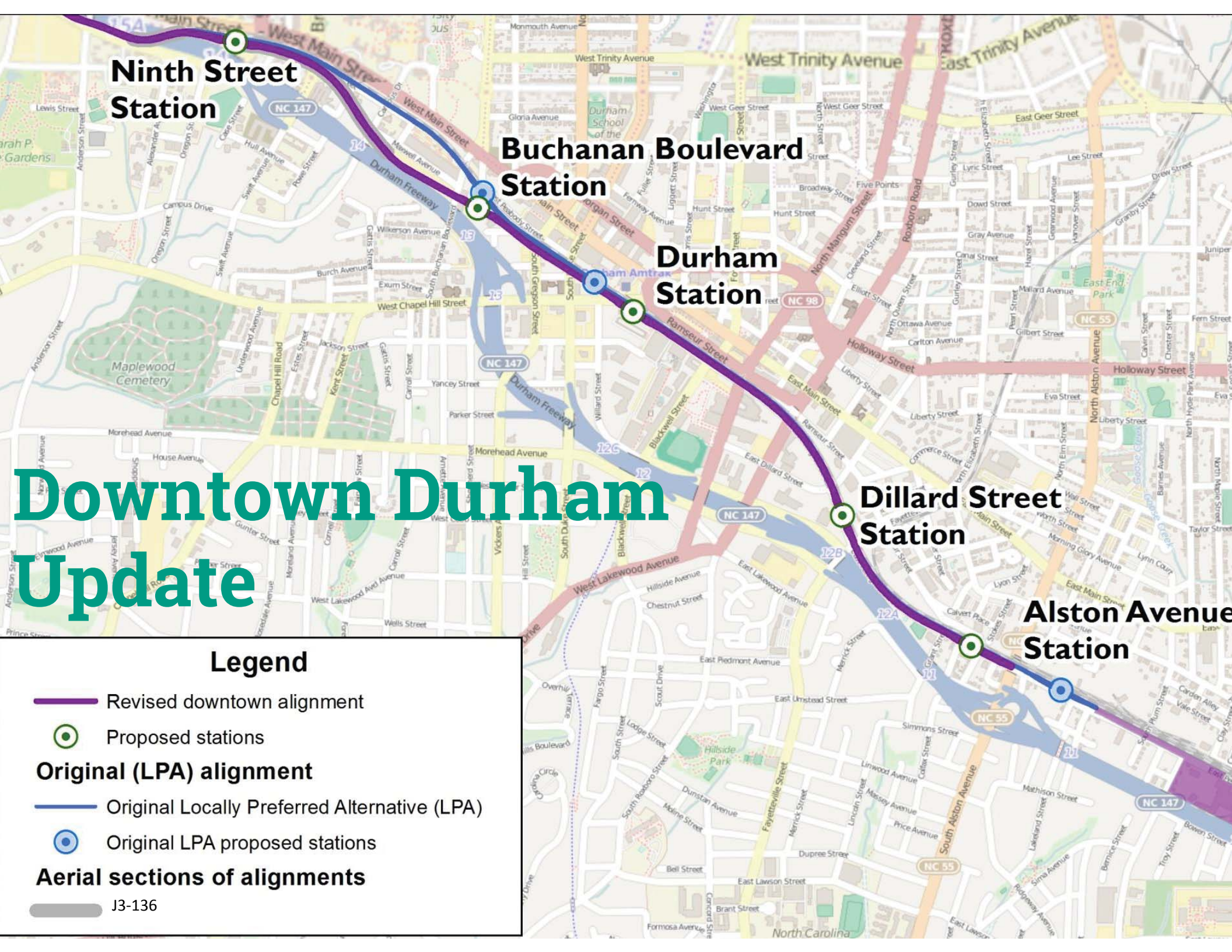
- Evaluate alternatives & recommend the NEPA Preferred Alternative
- Complete environmental impact statement (EIS) & preliminary engineering

**Final Design/
Engineering**

- Complete Final Design and Engineering
- Acquire state and local funding commitments
- Begin property negotiations and acquisitions

Construction

- Execute Full Funding Grant Agreement
- Begin construction
- Order vehicles and equipment



Ninth Street Station

Buchanan Boulevard Station






Durham Station

Dillard Street Station

Alston Avenue Station

Downtown Durham Update

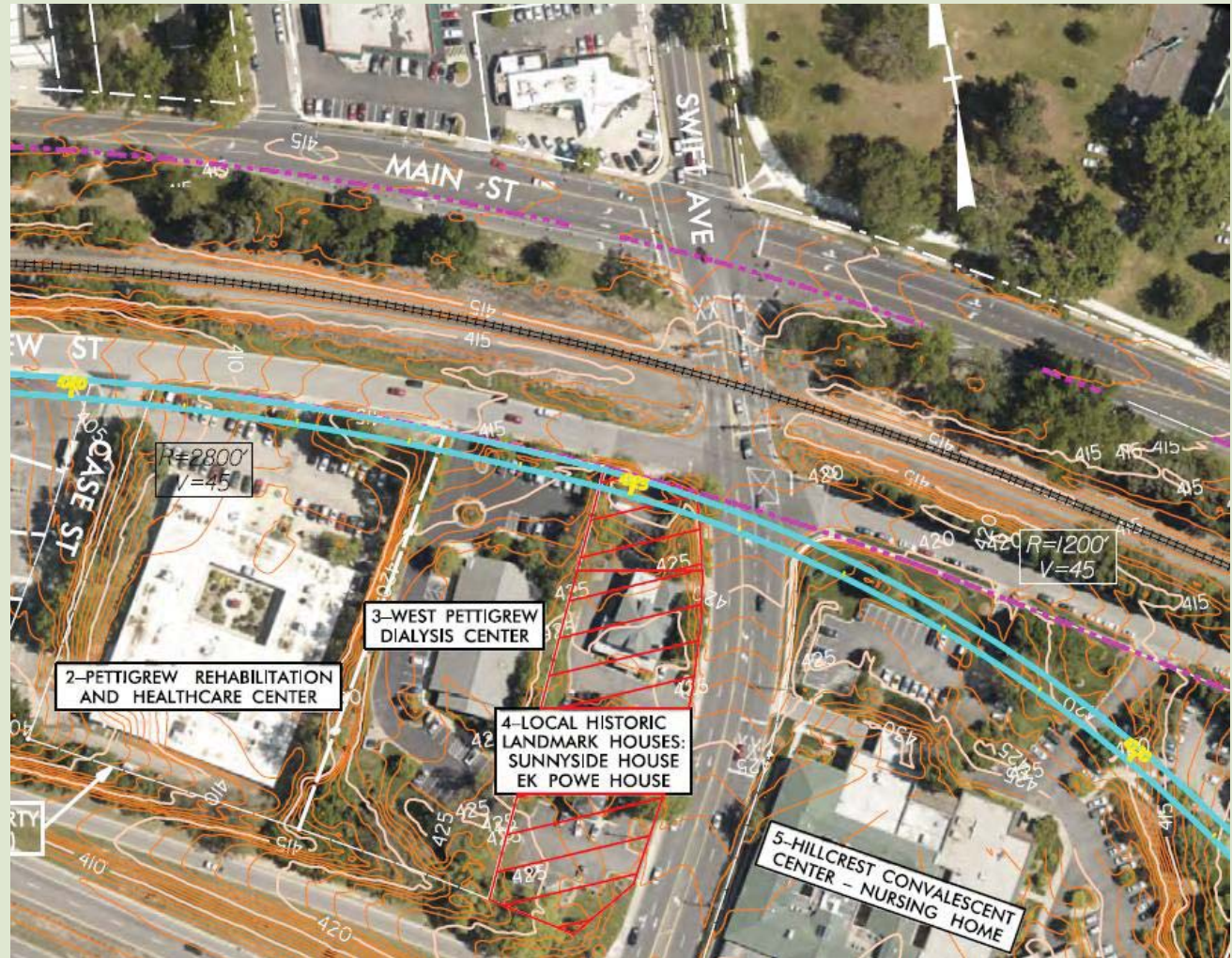
Legend

-  Revised downtown alignment
-  Proposed stations
- Original (LPA) alignment**
-  Original Locally Preferred Alternative (LPA)
-  Original LPA proposed stations
- Aerial sections of alignments**
-  I-3-136

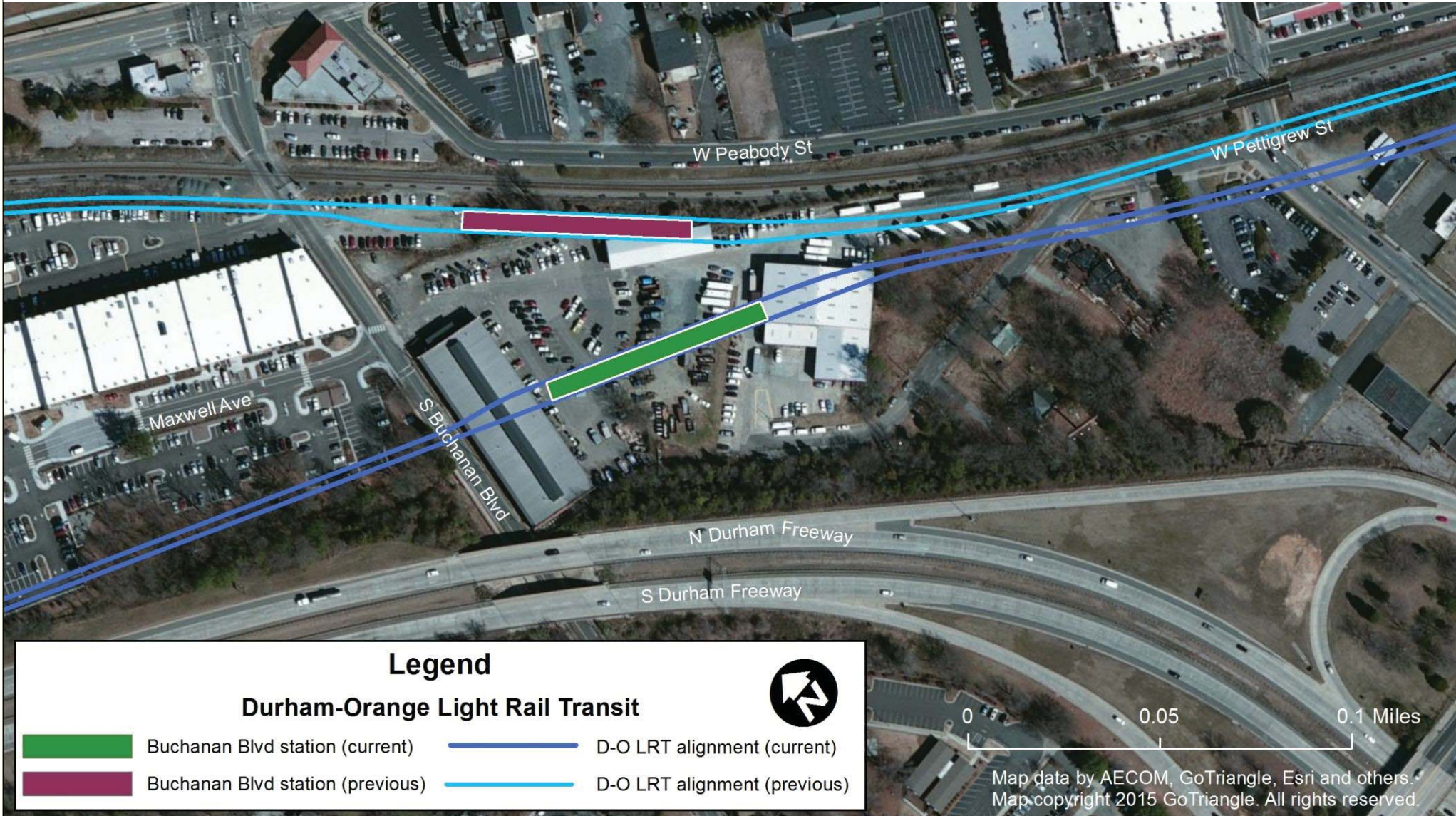
Swift Avenue Grade Separation



- Elevated track extended over Swift Ave.
- Pettigrew St. stays open
- No impacts to Swift Ave. and Main St.



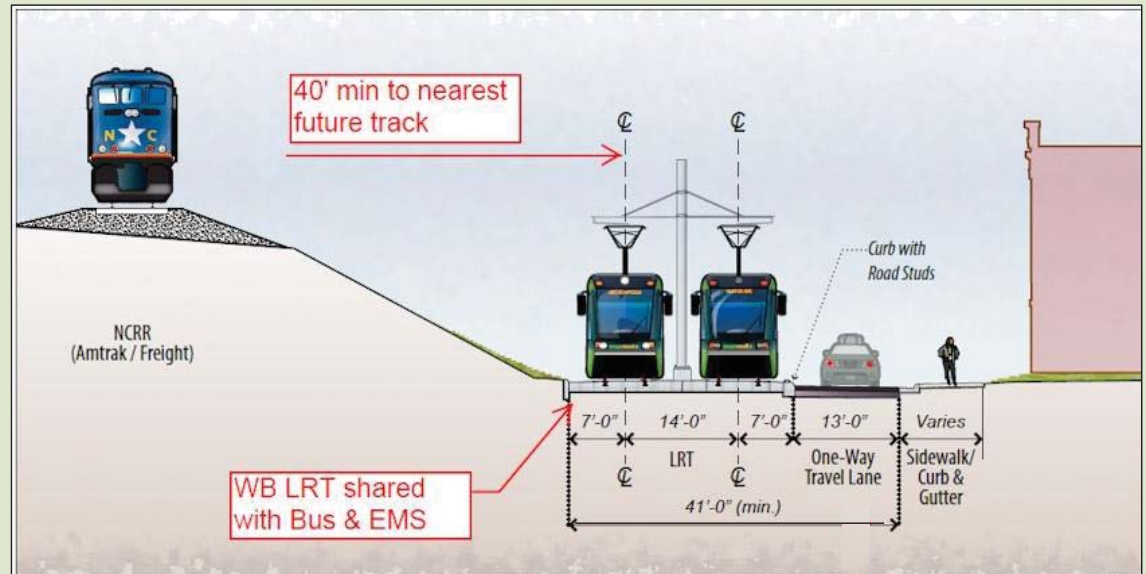
Buchanan Boulevard Station



Pettigrew Street Transitway



- Light Rail and one-way eastbound vehicular traffic: Chapel Hill St. to Dillard St.
- Two-way vehicular traffic: Dillard St. to Alston Ave. and beyond
- Buses and EMS vehicles can use westbound transitway
- Pettigrew St. does not change between Ninth St. & Chapel Hill St.



Street Running LRT on Pettigrew St with One-Way Traffic Lane



Transitway at Pettigrew & Mangum St

Alston Avenue Station

Walking distance from
station platforms to Alston Ave

700 feet

775 feet

Legend

Durham-Orange Light Rail Transit

-  D-O LRT alignment
-  Alston Ave Station (transitway)
-  Alston Ave Station (LPA)



N Durham Freeway

S Durham Freeway

0

0.05

0.1 Miles

Map data by AECOM, GoTriangle, Esri and others.
Map copyright 2015 GoTriangle. All rights reserved.

NEPA & THE DEIS



**THE NATIONAL ENVIRONMENTAL
POLICY ACT
&
THE DRAFT ENVIRONMENTAL
IMPACT STATEMENT**

Environmental Impact Statement



- Must be completed in 2 years
- Covers a broad range of topics
 - The natural environment: birds, bees and trees
 - The human environment: traffic, development and aesthetics
 - The community: demographics, cultural/historic resources, parks, business/residential impacts
- Includes all reasonable alternatives to our proposed project
- Recommends alignment alternatives to move forward into Engineering phase.

DEIS Public Hearing Process



- Published by the Federal Transit Administration this Fall
- Posted on ourtransitfuture.com, printed copies available for public access
- Two Information Sessions
- Two Public Hearings

5 Key Decisions



- Build or No-Build
 - Is this project worth it in the long-run?
- Duke/VA Medical Center Station
- New Hope Creek Crossing
- Little Creek Crossing
- Maintenance Facility Site

Build v. No-Build



**Duke Eye Center
Alternative**

**Trent/Flowers
Drive Alternative**

**Locally Preferred
Alternative (LPA)**

Legend

LRT stations



Proposed station



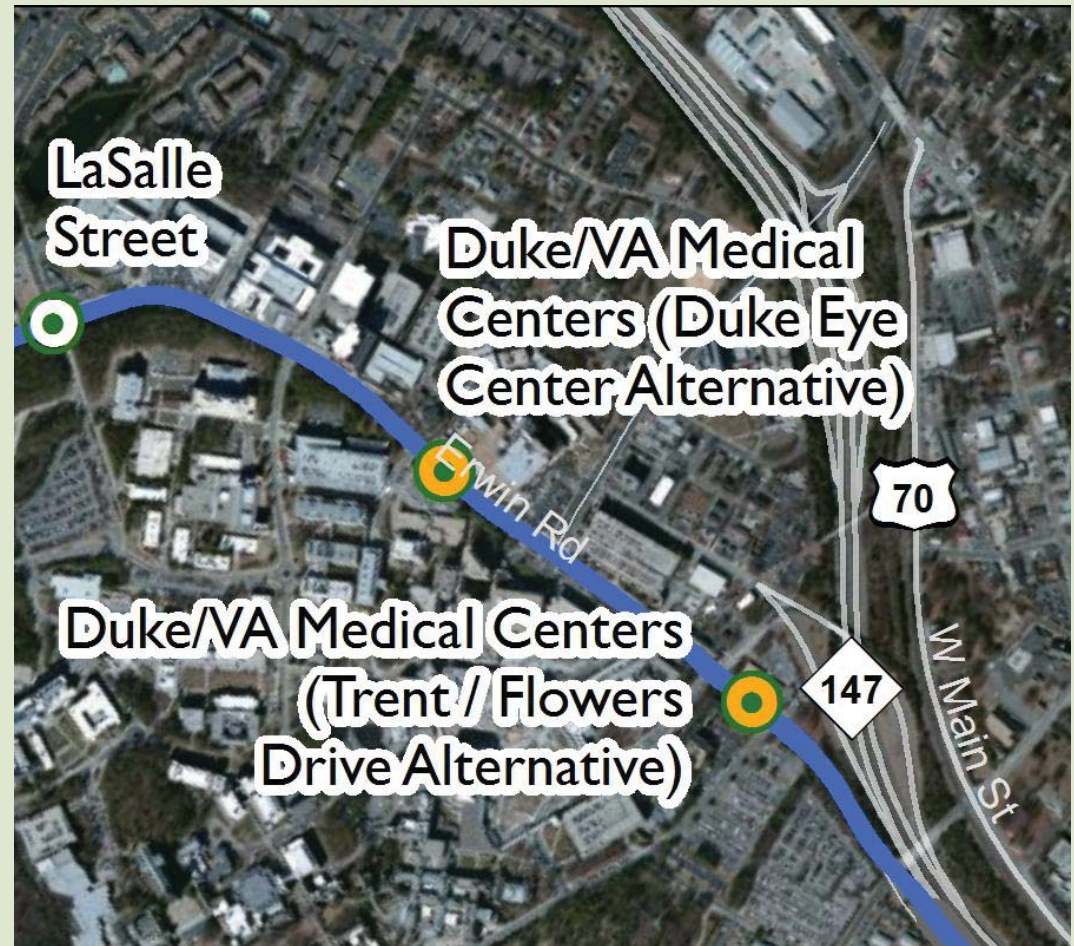
Proposed station alternative



Duke/VA Medical Centers: Summary



- Duke and the VA expressed a preference for Trent/Flowers station:
 - Less traffic and pedestrian congestion than Eye Care Center area
 - Future Duke University plans for West Campus
- Station locations similar across most metrics

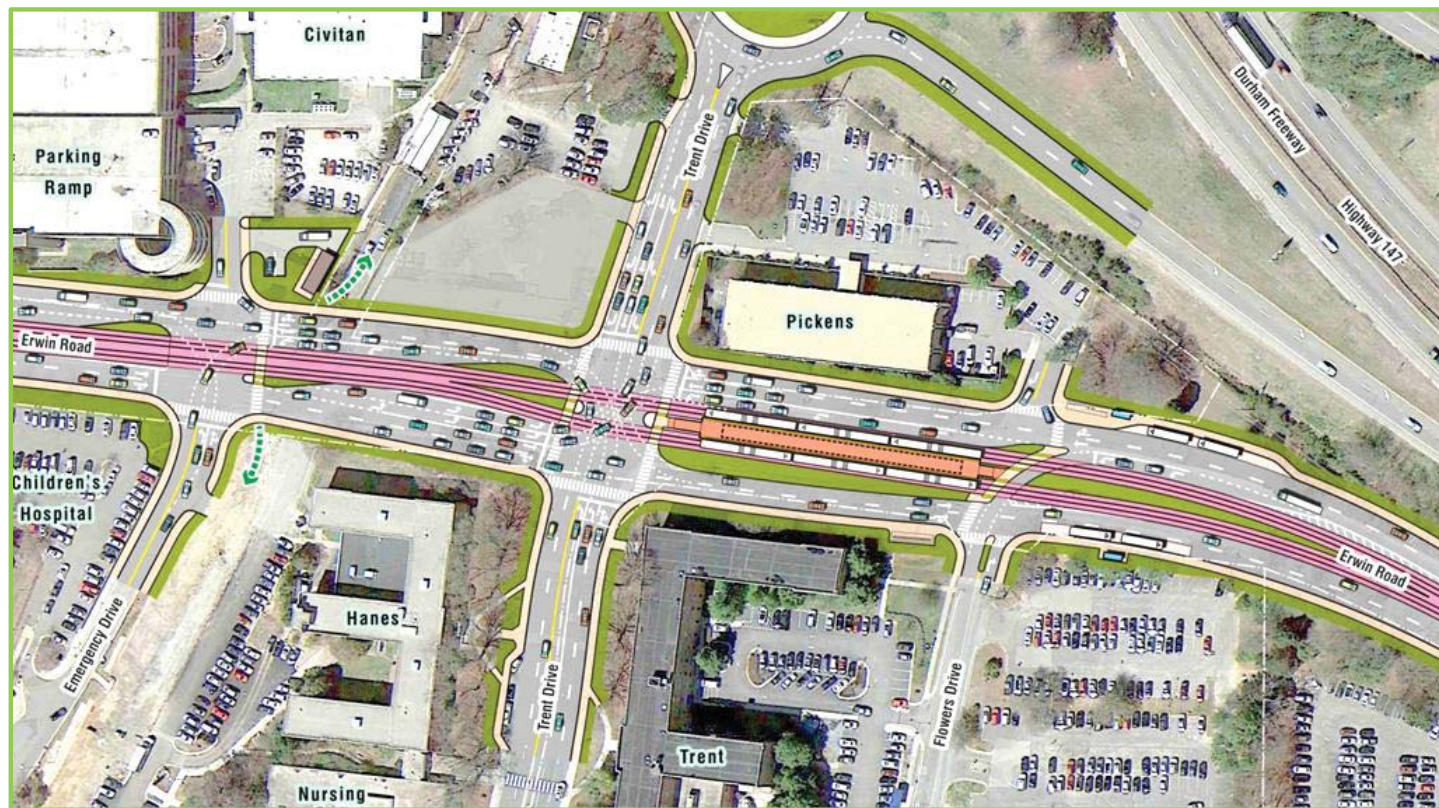


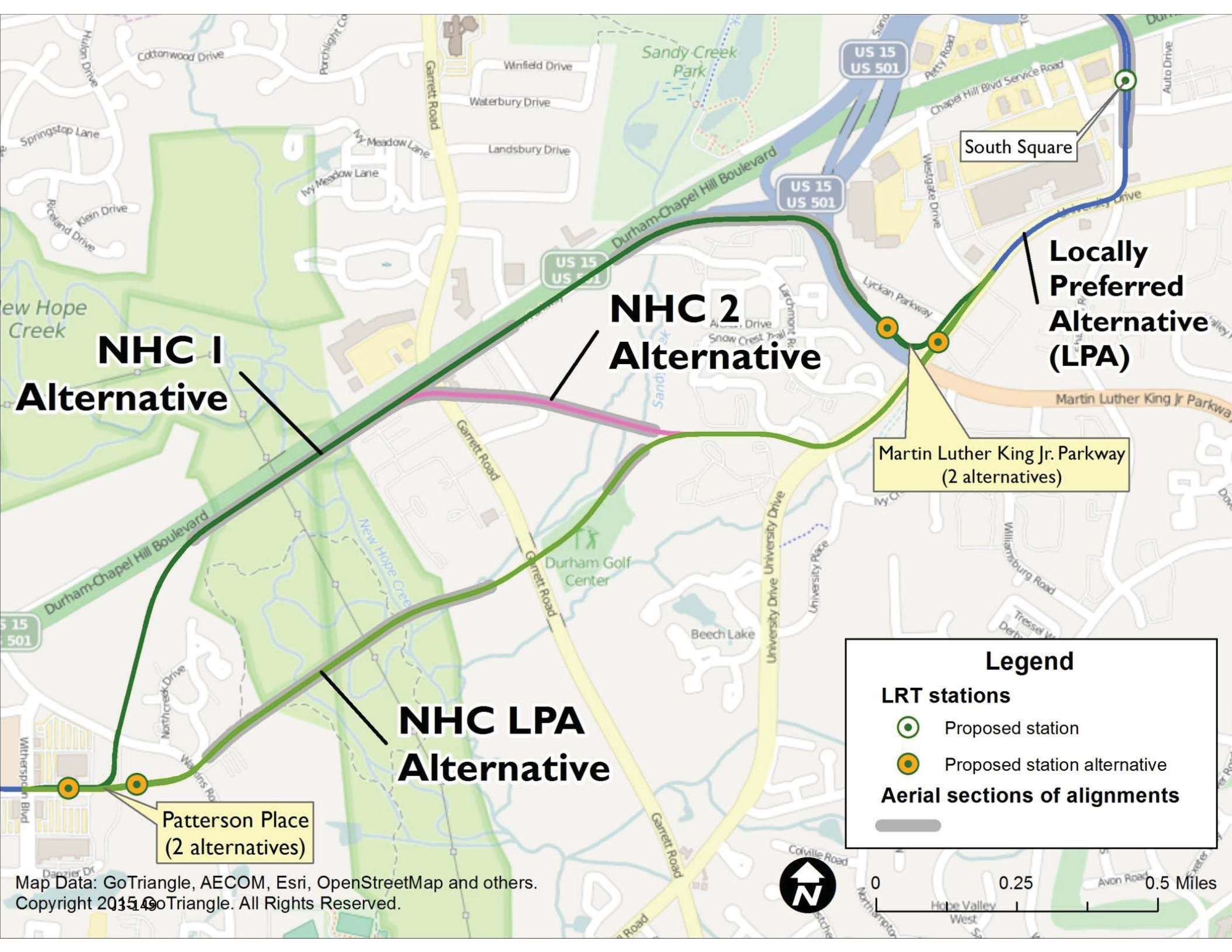
Recommendation for Preliminary NEPA Preferred Alternative



DUKE/VA MEDICAL CENTERS STATION

Trent/Flowers Drive
Alternative





Map Data: GoTriangle, AECOM, Esri, OpenStreetMap and others.
 Copyright 2015 GoTriangle. All Rights Reserved.

Legend

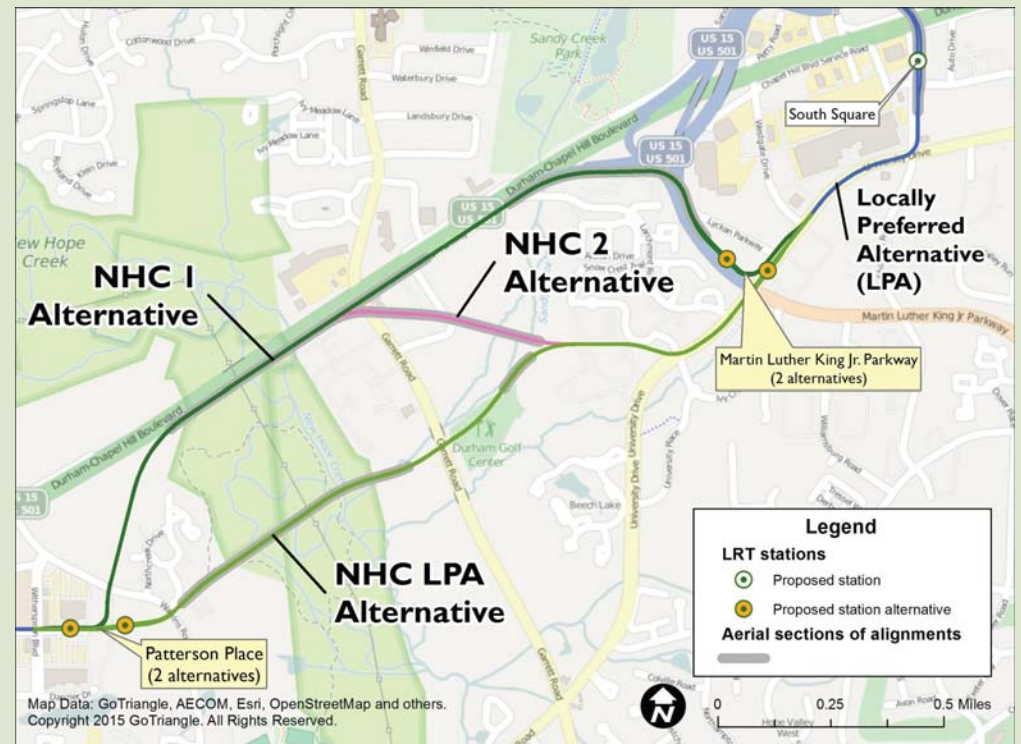
- LRT stations**
 - Proposed station (Green circle with white center)
 - Proposed station alternative (Orange circle with white center)
- Aerial sections of alignments**
 - Grey line



New Hope Creek Summary



- NHC LPA introduces a new transportation corridor through NHC Bottomlands – impacts led to development NHC 1 & NHC 2
- NHC 1 costs more & impacts more businesses than NHC LPA & NHC 2
- NHC 1 & NHC 2 impact fewer public parklands than NHC LPA
- NHC 2 has fewer environmental impacts than NHC LPA & fewer business impacts than NHC 1

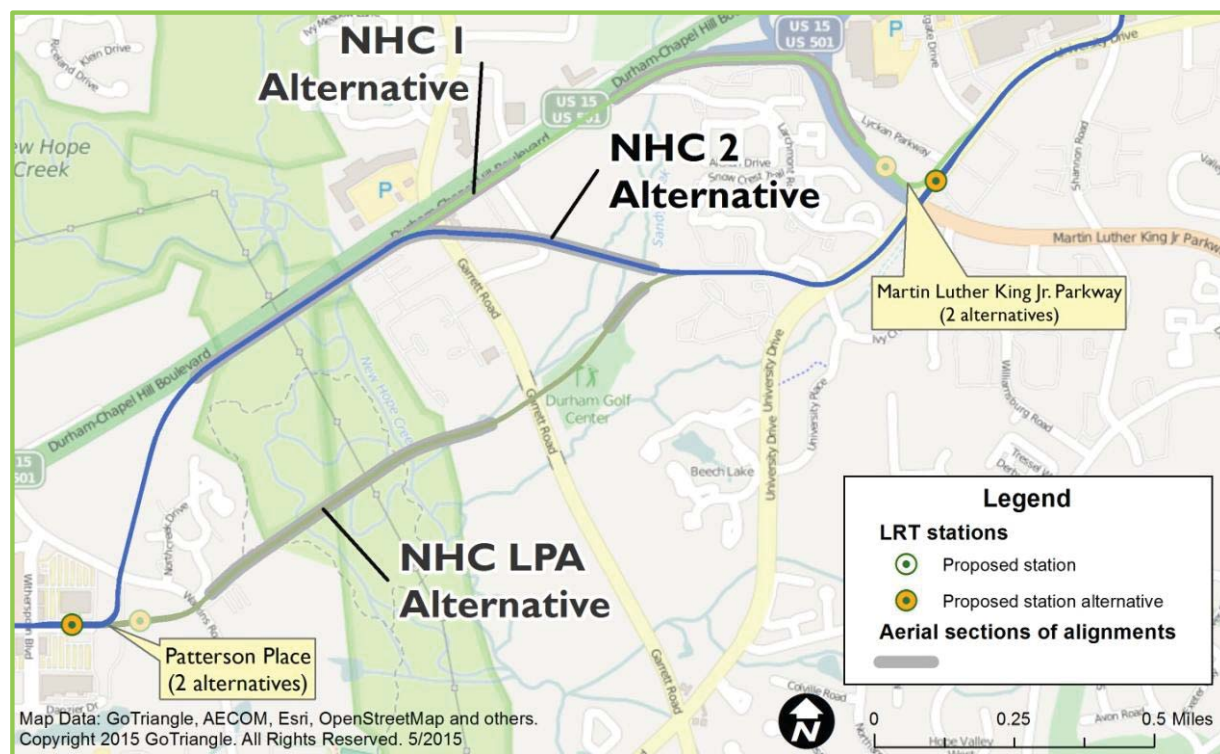


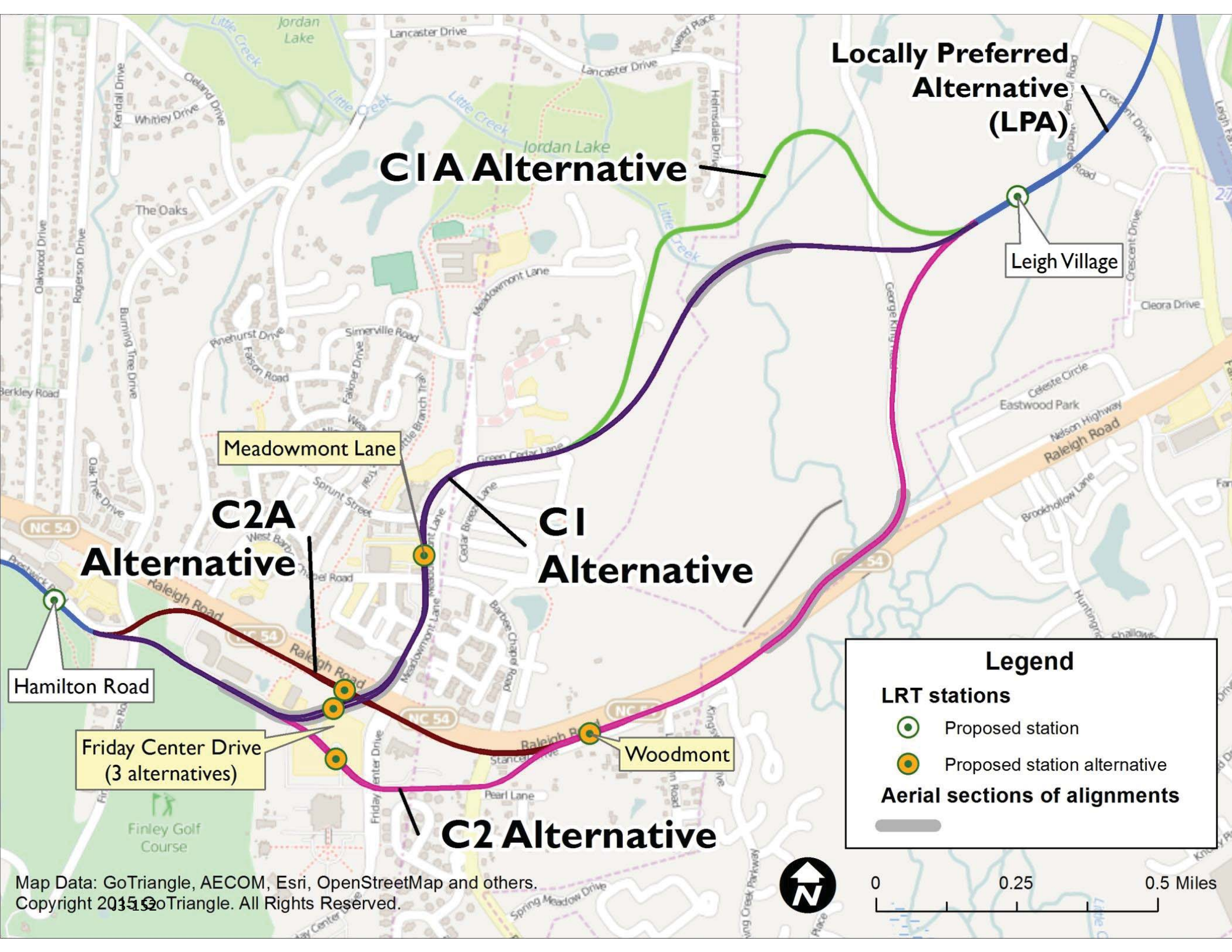
Recommendation for Preliminary NEPA Preferred Alternative



NEW HOPE CREEK CROSSING

New Hope Creek 2 Alternative





Locally Preferred Alternative (LPA)

C1A Alternative

Leigh Village

Meadowmont Lane

C2A Alternative

C1 Alternative

Hamilton Road

Friday Center Drive (3 alternatives)

Woodmont

C2 Alternative

Legend

- Proposed station (Green circle icon)
- Proposed station alternative (Orange circle icon)
- Aerial sections of alignments (Gray bar icon)



Little Creek: Summary



C1

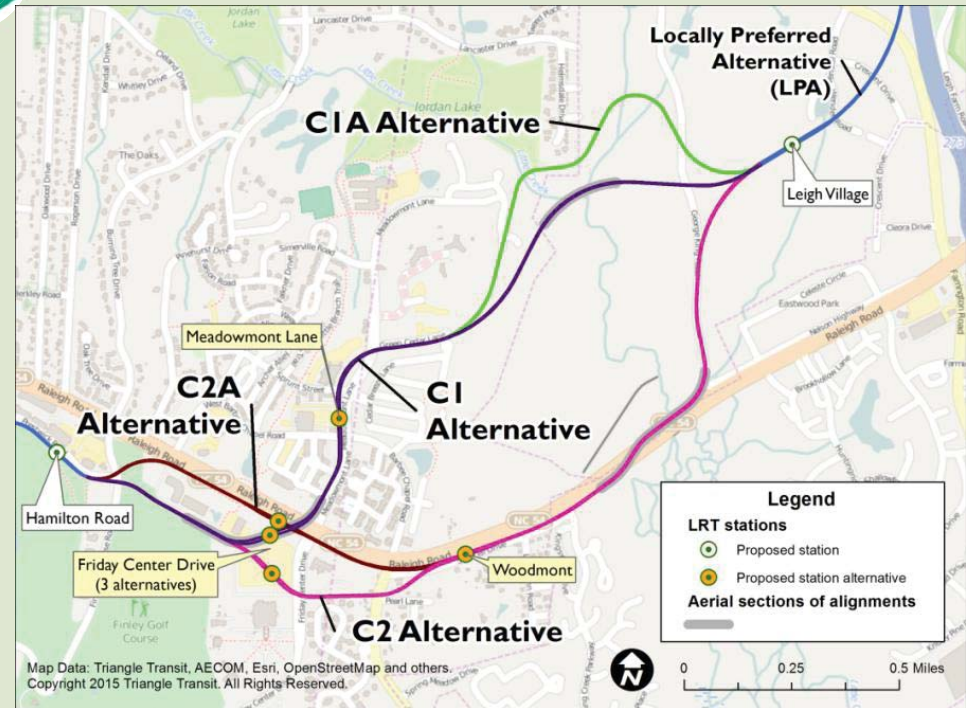
- Eliminated – USACE will not authorize use of federal property “given the availability of less damaging alternatives.”

C1A

- Longest travel time & lowest ridership
- Most expensive to build & operate
- Impacts two public parks

C2

- Carries 700 more daily riders than C1A
- Cost similar to C2A & less than C1A
- More displacements than C1A & C2A



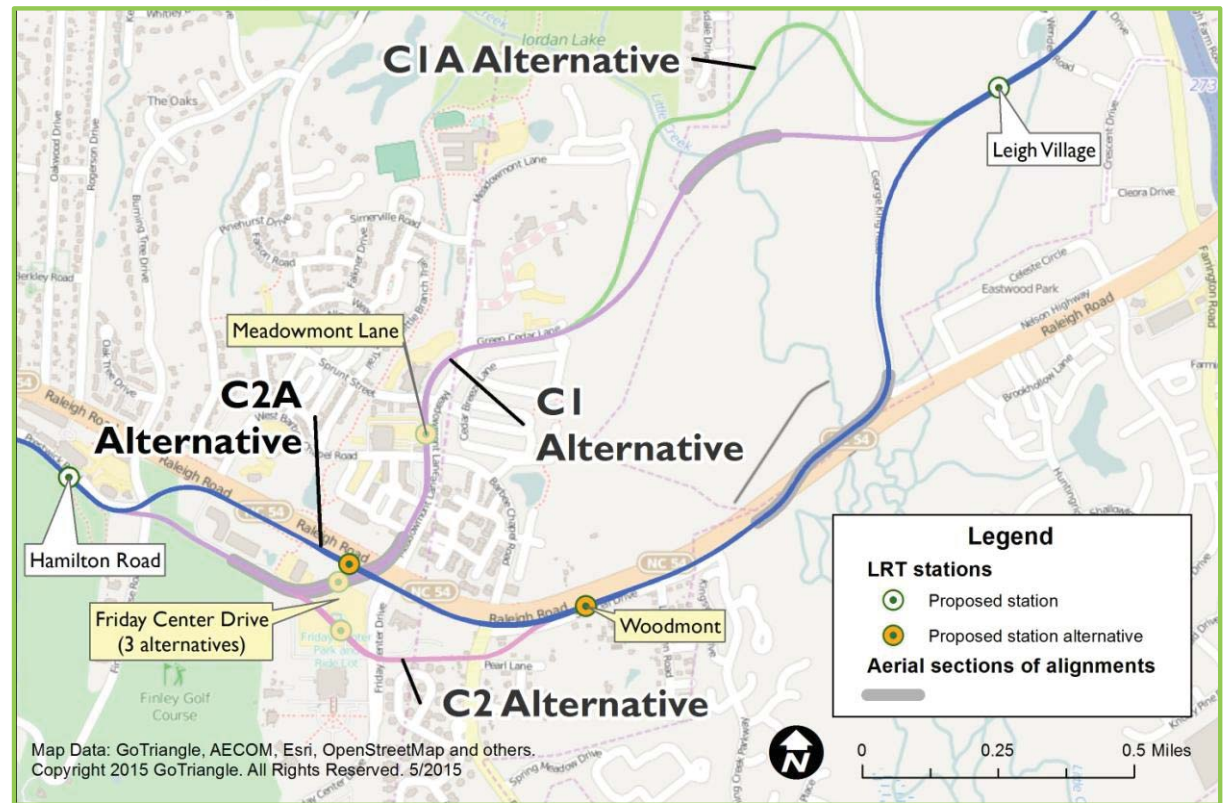
C2A

- C2A has fastest travel time & carries 1,000 more daily riders than C1A
- Cost similar to C2 and less than C1A
- Least public parkland impacts

Recommendation for Preliminary NEPA Preferred Alternative



LITTLE CREEK CROSSING C2A Alternative

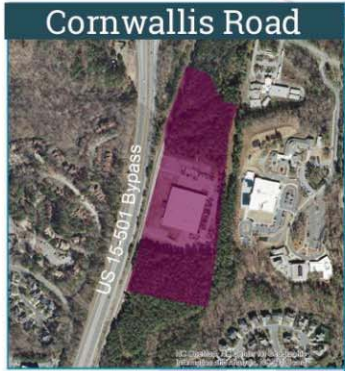


Rail Operations & Maintenance Facility



- Trains are stored and maintained
- Operations and Maintenance staff includes:
 - Mechanics & Operators
 - Supervisors & Dispatchers
 - Administration
- Requires 15-25 acres
- Most work on vehicles is performed indoors





- Rail Operations and Maintenance Facility
- LRT Station
- LRT Station Alternative
- Proposed Light Rail Alignment
- C1 Alignment
- C1A Alignment
- C2A Alignment
- C2 Alignment
- New Hope Creek 1 Alignment
- New Hope Creek 2 Alignment
- New Hope Creek - LPA

Durham

J3-156

Differentiators: Leigh Village Site



- One eligible historic resource



Differentiators: Patterson Place Site



- Only works with NHC LPA



Differentiators: Alston Ave. Site



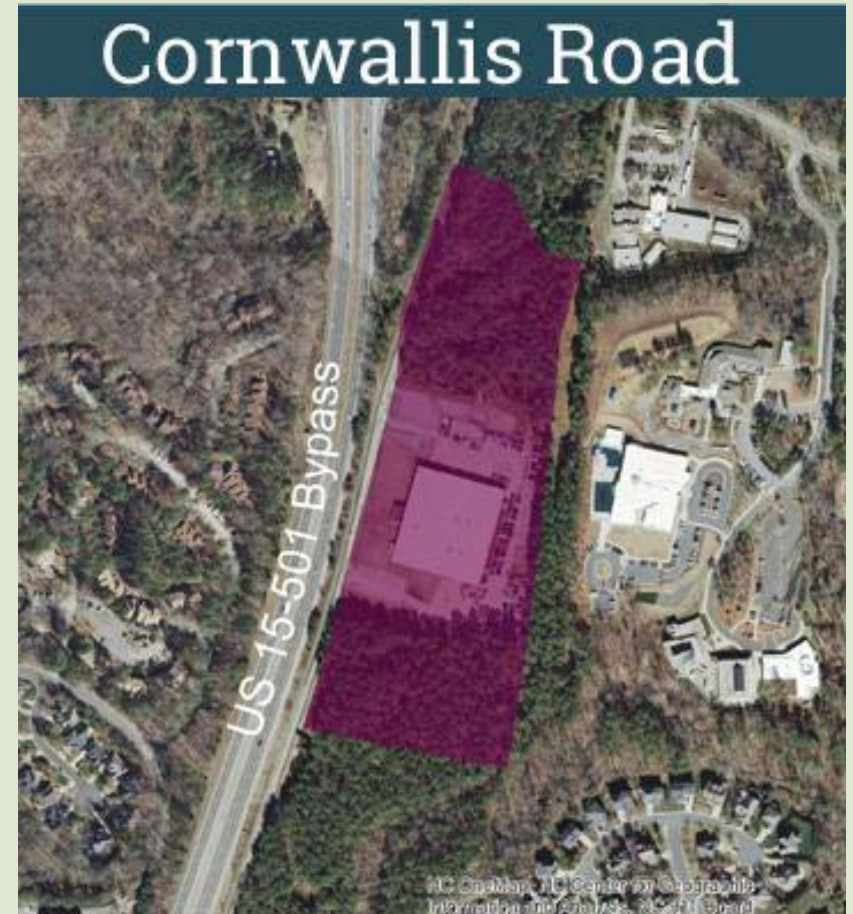
- No Historic Resource
- Works with all alternatives
- \$96 - \$145 million
- Acquisitions/Displacements
 - 2 single-family residences
 - 6 commercial/industrial businesses (including Brenntag Mid-South and Eastern Carolina Organics) would be displaced
 - Potential net loss of jobs
- 2 high and 8 medium risk HAZMAT sites



Differentiators: Cornwallis Site



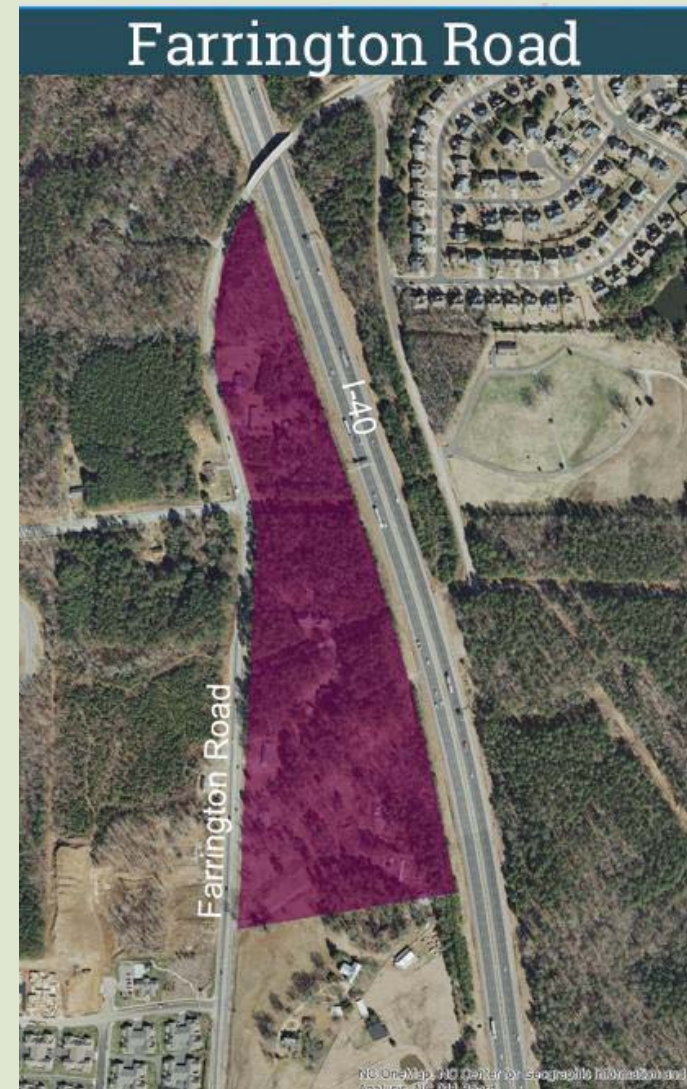
- No Historic Resource
- Works with all alternatives
- \$74 - \$111 million
- Acquisitions/Displacements
 - would displace a commercial/ industrial building (former Pepsi plant) *[renovation for mini-storage facility underway]*
- 1 medium risk HAZMAT site



Differentiators: Farrington Site



- No historic resource
- Works with all alternatives
- \$62 - \$93 million
- Acquisitions/Displacements
 - 6 single-family residences
 - 1 cell tower - *coordination with utility may avoid displacement*
- No HAZMAT sites



Summary of Cost & Schedule Risks/Impacts

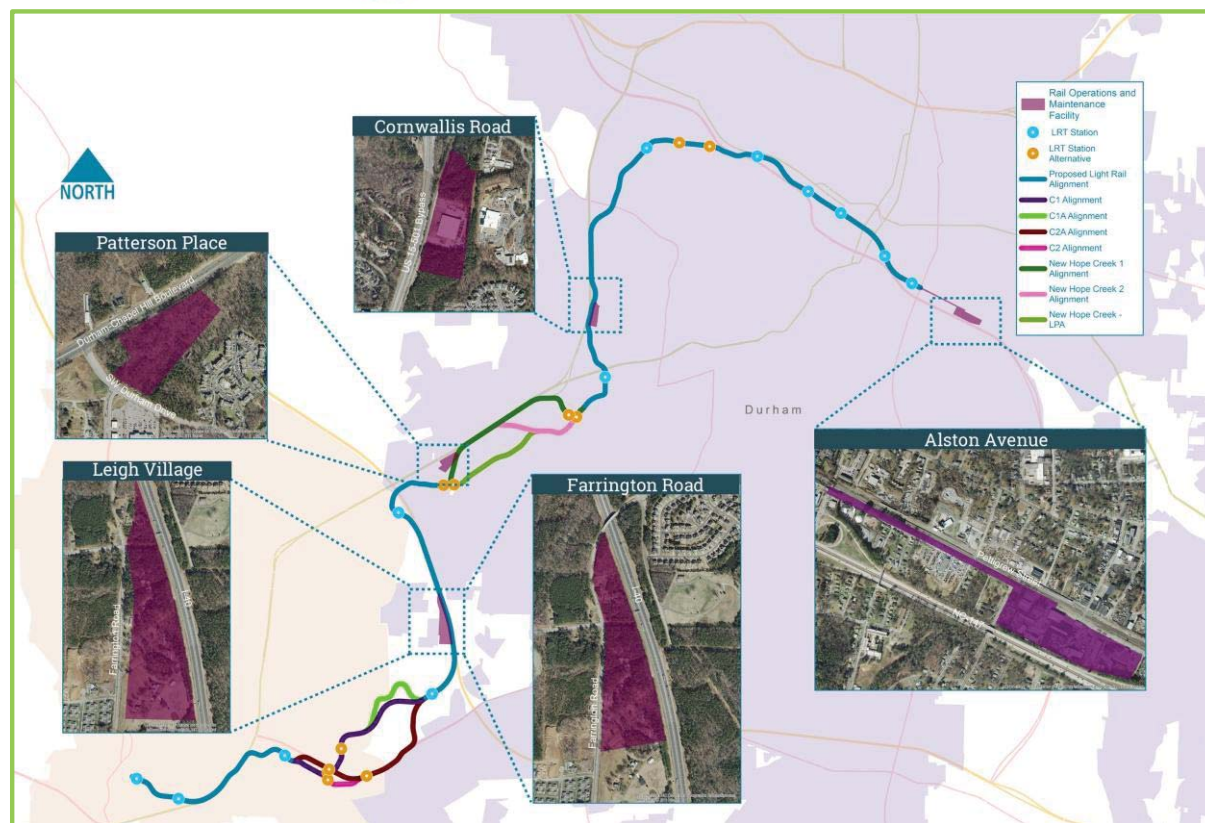
Risk Area	Alston	Cornwallis	Farrington
Land Use	None	Low	Medium
Relocations	High	Medium	Low
Hazardous Materials	High	Medium	None
Water Resource Impacts	None	Low	Medium
Neighborhood Impacts	Low	Medium	Low
Railroad Coordination	High	None	None
Ongoing Light Rail Operations	Low	Low	None
Cost Escalation	High	Low	Low
OVERALL	HIGH	MEDIUM	MEDIUM

Recommendation for Preliminary NEPA Preferred Alternative



ROMF SITE LOCATION

FARRINGTON ROAD
or
CORNWALLIS ROAD



Going Forward



WHAT WE NEED FROM YOU

Continue to Comment



- Tell us what you like
- Look at preliminary NEPA Preferred Alternative and tell us how we can improve it
- Give us information we may have missed

How You Can Connect With Us



- Email: info@ourtransitfuture.com
- Mail a letter to: Our Transit Future, P.O. Box 530, Morrisville NC, 27560
- Call us at: 800.816.7817
- Complete our online survey
- Submit a comment form at a public meetings

Break



STAFF IS AVAILABLE TO HELP YOU



PLEASE SIGN IN!

Durham-Orange Light Rail Transit Project

Meeting Date June 2 2015 Location Chapel Hill Library

CIN 150330

Page ___ of ___

Name	Home Address	City, State, Zip	Email
zugie clemmons-roberts	[REDACTED]	chapel hill nc	<input checked="" type="checkbox"/> Yes, add me to the project database Enter email below if you prefer email [REDACTED]
Robert Cole	[REDACTED]	Chapel Hill, NC	<input type="checkbox"/> Yes, add me to the project database Enter email below if you prefer email
Joel & Pam Cook	[REDACTED]		<input type="checkbox"/> Yes, add me to the project database Enter email below if you prefer email <u>already on list</u>
Steve Simons	[REDACTED]	Chapel Hill	<input type="checkbox"/> Yes, add me to the project database Enter email below if you prefer email
Dee Coker	[REDACTED]	Chapel Hill	<input type="checkbox"/> Yes, add me to the project database Enter email below if you prefer email
Esther Miller	[REDACTED]	C.H.	<input type="checkbox"/> Yes, add me to the project database Enter email below if you prefer email
Mary + Ralph Pruitt	[REDACTED]	CH	<input type="checkbox"/> Yes, add me to the project database Enter email below if you prefer email
Ellen Singer	[REDACTED]	C.H.	<input type="checkbox"/> Yes, add me to the project database Enter email below if you prefer email
GT: Miranda Evenson	[REDACTED]	CH 27514	<input type="checkbox"/> Yes, add me to the project database Enter email below if you prefer email
Josh Kastriusky	[REDACTED]	Durham 27707	<input type="checkbox"/> Yes, add me to the project database Enter email below if you prefer email
person anonymous		would not sign	<input type="checkbox"/> Yes, add me to the project database Enter email below if you prefer email
Susan Balog	[REDACTED]		<input type="checkbox"/> Yes, add me to the project database Enter email below if you prefer email



PLEASE SIGN IN!

Durham-Orange Light Rail Transit Project

Meeting Date June 2 2015

Location Chapel Hill Library

Page ___ of ___

Name	Home Address	City, State, Zip	Email
Weezie Oldenburg			<input type="checkbox"/> Yes, add me to the project database Enter email below if you prefer email _____
Kari Huron			<input type="checkbox"/> Yes, add me to the project database Enter email below if you prefer email _____
Lynda Howell	[REDACTED]	Chapel Hill 27517	<input type="checkbox"/> Yes, add me to the project database Enter email below if you prefer email _____
Cheri Hardman	.	CA NC 27517	<input type="checkbox"/> Yes, add me to the project database Enter email below if you prefer email _____
Brad Benthin	[REDACTED]	CA 27517	<input checked="" type="checkbox"/> Yes, add me to the project database Enter email below if you prefer email [REDACTED]
Pamela Kauschke	[REDACTED]	27512	<input type="checkbox"/> Yes, add me to the project database Enter email below if you prefer email _____
Elizabeth Bryant	[REDACTED]	27516	<input checked="" type="checkbox"/> Yes, add me to the project database Enter email below if you prefer email [REDACTED]
Wj Pointer			<input type="checkbox"/> Yes, add me to the project database Enter email below if you prefer email _____
Eric Teagarden		27517	<input type="checkbox"/> Yes, add me to the project database Enter email below if you prefer email _____
Lucy Louche	[REDACTED]	-27514	<input type="checkbox"/> Yes, add me to the project database Enter email below if you prefer email _____
Pat Killian	[REDACTED]	27514	<input type="checkbox"/> Yes, add me to the project database Enter email below if you prefer email _____
Charles Fisher	11	11	<input type="checkbox"/> Yes, add me to the project database Enter email below if you prefer email _____



PLEASE SIGN IN!

Durham-Orange Light Rail Transit Project

Page ____ of ____

Meeting Date June 2 2015 Location Chapel Hill Library

Name	Home Address	City, State, Zip	Email
RICHARD ELLMAN	[REDACTED]	DURHAM 27702	<input checked="" type="checkbox"/> Yes, add me to the project database Enter email below if you prefer email [REDACTED]
Diana Steek	[REDACTED]	Chapel Hill 27514	<input checked="" type="checkbox"/> Yes, add me to the project database Enter email below if you prefer email [REDACTED]
Susan Felice	[REDACTED]	CH 27517	<input checked="" type="checkbox"/> Yes, add me to the project database Enter email below if you prefer email [REDACTED]
Bob STODOLFF	[REDACTED]	CH 27517	<input type="checkbox"/> Yes, add me to the project database Enter email below if you prefer email
Pam Rankin	[REDACTED]		<input type="checkbox"/> Yes, add me to the project database Enter email below if you prefer email
Phil Hanson	[REDACTED]		<input type="checkbox"/> Yes, add me to the project database Enter email below if you prefer email
Constance Magoli	[REDACTED]	CH 27517	<input checked="" type="checkbox"/> Yes, add me to the project database Enter email below if you prefer email [REDACTED]
John Nettles	[REDACTED]	CH 27517	<input checked="" type="checkbox"/> Yes, add me to the project database Enter email below if you prefer email [REDACTED]
Bret Martin	[REDACTED]		<input type="checkbox"/> Yes, add me to the project database Enter email below if you prefer email
Ben Lykns	[REDACTED]	ch 27514	<input checked="" type="checkbox"/> Yes, add me to the project database [REDACTED]
Megan Hurn	[REDACTED]	CH 27514	<input type="checkbox"/> Yes, add me to the project database Enter email below if you prefer email
Allison Chandler	[REDACTED]		<input type="checkbox"/> Yes, add me to the project database Enter email below if you prefer email



PLEASE SIGN IN!

Durham-Orange Light Rail Transit Project

Page ____ of ____

Meeting Date June 2 2015 Location Chapel Hill Library

Name	Home Address	City, State, Zip	Email
TOD ALLEN	[REDACTED]	RALEIGH 27605	<input type="checkbox"/> Yes, add me to the project database Enter email below if you prefer email
JOHN KENT			<input type="checkbox"/> Yes, add me to the project database Enter email below if you prefer email
BILL FERRIS	[REDACTED]		<input type="checkbox"/> Yes, add me to the project database Enter email below if you prefer email
Arb Cooper			<input type="checkbox"/> Yes, add me to the project database Enter email below if you prefer email
Jim Ackerman			<input type="checkbox"/> Yes, add me to the project database Enter email below if you prefer email
Erin MORANSETT			<input type="checkbox"/> Yes, add me to the project database Enter email below if you prefer email
Mary White			<input type="checkbox"/> Yes, add me to the project database Enter email below if you prefer email
Rosemarie Kitchin	[REDACTED]	Chapel Hill NC	<input type="checkbox"/> Yes, add me to the project database Enter email below if you prefer email
BRUCE BOEHM		CH	<input type="checkbox"/> Yes, add me to the project database Enter email below if you prefer email
GAIL WOOD	[REDACTED]	CH	<input checked="" type="checkbox"/> Yes, add me to the project database Enter email below if you prefer email
TAMMY GRUBB		CH NEWS	<input type="checkbox"/> Yes, add me to the project database Enter email below if you prefer email
Danielle Niedfeldt	[REDACTED]	Durham, NC	<input type="checkbox"/> Yes, add me to the project database Enter email below if you prefer email



PLEASE SIGN IN!

Durham-Orange Light Rail Transit Project

Page ____ of ____

Meeting Date June 2 2015 Location Chapel Hill Library

Name	Home Address	City, State, Zip	Email
Karen Berman	[REDACTED]	Durham 27707	<input type="checkbox"/> Yes, add me to the project database Enter email below if you prefer email
Cynthia Reifsnider	[REDACTED]	CHAPEL HILL 27517	<input type="checkbox"/> Yes, add me to the project database Enter email below if you prefer email
Carolyn Epstein	[REDACTED]	Chapel Hill 27517	<input checked="" type="checkbox"/> Yes, add me to the project database Enter email below if you prefer email
Chris Paul	[REDACTED]	Chapel Hill 27517	<input checked="" type="checkbox"/> Yes, add me to the project database Enter email below if you prefer email
ARIF SITEKH	[REDACTED]	Chapel Hill, 27514	<input checked="" type="checkbox"/> Yes, add me to the project database Enter email below if you prefer email
Deborah Roach	[REDACTED]	Ch Hill 27517	<input checked="" type="checkbox"/> Yes, add me to the project database Enter email below if you prefer email
BOB HUMPHREYS	[REDACTED]	Chapel Hill 27517	<input checked="" type="checkbox"/> Yes, add me to the project database Enter email below if you prefer email
Phil Singer	[REDACTED]	Chapel Hill 27514	<input checked="" type="checkbox"/> Yes, add me to the project database Enter email below if you prefer email
Heather Payne	[REDACTED]	Chapel Hill 27514	<input type="checkbox"/> Yes, add me to the project database Enter email below if you prefer email
Becci Kitter	[REDACTED]	" 27517	<input type="checkbox"/> Yes, add me to the project database Enter email below if you prefer email
Nancy Gordon	[REDACTED]	DURHAM 27705	<input type="checkbox"/> Yes, add me to the project database Enter email below if you prefer email
Jane Heuser	[REDACTED]	Ch H. 27516	<input checked="" type="checkbox"/> Yes, add me to the project database Enter email below if you prefer email



PLEASE SIGN IN!

Durham-Orange Light Rail Transit Project

Meeting Date June 2 2015

Location Chapel Hill Library

Page ___ of ___

Name	Home Address	City, State, Zip	Email
Katherine Higgins + John Branthy	[REDACTED]	Chapel Hill, NC 27517	<input checked="" type="checkbox"/> Yes, add me to the project database Enter email below if you prefer email [REDACTED]
Karen Curtin	[REDACTED]	Chapel Hill 27517	<input type="checkbox"/> Yes, add me to the project database Enter email below if you prefer email [REDACTED]
Tom BOND	[REDACTED]	27517	<input type="checkbox"/> Yes, add me to the project database Enter email below if you prefer email _____
Grant Garrigues	[REDACTED]	CH, NC 27517	<input type="checkbox"/> Yes, add me to the project database Enter email below if you prefer email _____
Julce McClaherty	[REDACTED]	CH 27514	<input type="checkbox"/> Yes, add me to the project database Enter email below if you prefer email _____
Corey Vernier	[REDACTED]	Raleigh, NC 27609	<input checked="" type="checkbox"/> Yes, add me to the project database Enter email below if you prefer email [REDACTED]
Lisa Brachman	[REDACTED]	Chapel Hill 27514	<input type="checkbox"/> Yes, add me to the project database Enter email below if you prefer email _____
central computer	[REDACTED]	Chapel Hill 27517	<input type="checkbox"/> Yes, add me to the project database Enter email below if you prefer email _____
Bill Freeman	[REDACTED]	CH 27517	<input type="checkbox"/> Yes, add me to the project database Enter email below if you prefer email _____
Tom DAVIN	[REDACTED]	27707 Durham, NC	<input type="checkbox"/> Yes, add me to the project database Enter email below if you prefer email _____
Judi Lilly	[REDACTED]	Chapel Hill 27514	<input type="checkbox"/> Yes, add me to the project database Enter email below if you prefer email [REDACTED]



PLEASE SIGN IN!

Durham-Orange Light Rail Transit Project

Page ____ of ____

Meeting Date June 2 2015 Location Chapel Hill Library

Name	Home Address	City, State, Zip	Email
Matt Pollack	[REDACTED]	Roswell, GA 30076	<input type="checkbox"/> Yes, add me to the project database Enter email below if you prefer email _____
Travis Kephart	[REDACTED]	Durham NC 27707	<input checked="" type="checkbox"/> Yes, add me to the project database [REDACTED]
Kathleen Davis	[REDACTED]	Durham NC 27707	<input type="checkbox"/> Yes, add me to the project database Enter email below if you prefer email _____
			<input type="checkbox"/> Yes, add me to the project database Enter email below if you prefer email _____
			<input type="checkbox"/> Yes, add me to the project database Enter email below if you prefer email _____
			<input type="checkbox"/> Yes, add me to the project database Enter email below if you prefer email _____
			<input type="checkbox"/> Yes, add me to the project database Enter email below if you prefer email _____
			<input type="checkbox"/> Yes, add me to the project database Enter email below if you prefer email _____
			<input type="checkbox"/> Yes, add me to the project database Enter email below if you prefer email _____
			<input type="checkbox"/> Yes, add me to the project database Enter email below if you prefer email _____
			<input type="checkbox"/> Yes, add me to the project database Enter email below if you prefer email _____
			<input type="checkbox"/> Yes, add me to the project database Enter email below if you prefer email _____



PLEASE SIGN IN!

Durham-Orange Light Rail Transit Project

Page ___ of ___

Meeting Date June 2 2015 Location Chapel Hill Library

Name	Home Address	City, State, Zip	Email
JOSÉ			<input type="checkbox"/> Yes, add me to the project database [Redacted]
BRAD IVES	[Redacted]	C.H. 27517	<input type="checkbox"/> Yes, add me to the project database Enter email below if you prefer email _____
Antonia	[Redacted]	27516	<input type="checkbox"/> Yes, add me to the project database Enter email below if you prefer email _____
			<input type="checkbox"/> Yes, add me to the project database Enter email below if you prefer email _____
			<input type="checkbox"/> Yes, add me to the project database Enter email below if you prefer email _____
			<input type="checkbox"/> Yes, add me to the project database Enter email below if you prefer email _____
			<input type="checkbox"/> Yes, add me to the project database Enter email below if you prefer email _____
			<input type="checkbox"/> Yes, add me to the project database Enter email below if you prefer email _____
			<input type="checkbox"/> Yes, add me to the project database Enter email below if you prefer email _____
			<input type="checkbox"/> Yes, add me to the project database Enter email below if you prefer email _____
			<input type="checkbox"/> Yes, add me to the project database Enter email below if you prefer email _____
			<input type="checkbox"/> Yes, add me to the project database Enter email below if you prefer email _____



PLEASE SIGN IN!

Durham-Orange Light Rail Transit Project
 Meeting Date _____ Location _____

CIN 150339

Page ____ of ____

Name	Home Address	City, State, Zip	Email
Freddy DiValentino	[REDACTED]		<input checked="" type="checkbox"/> Yes, add me to the project database [REDACTED]
(SPANISH) NOE RAMOS REYES	[REDACTED]	Durham, NC 27703	<input checked="" type="checkbox"/> Yes, add me to the project database [REDACTED]
Peppy Black	[REDACTED]	Durham NC, 01	<input type="checkbox"/> Yes, add me to the project database Enter email below if you prefer email
Kurt vphoff	[REDACTED]	Durham NC 01	<input type="checkbox"/> Yes, add me to the project database Enter email below if you prefer email
Bob Boot	[REDACTED]		<input type="checkbox"/> Yes, add me to the project database E [REDACTED]
Tim Walter		Durham 01	<input type="checkbox"/> Yes, add me to the project database Enter email below if you prefer email
MIKE SHIFFIT	[REDACTED]	DURHAM 27704	<input type="checkbox"/> Yes, add me to the project database Enter email below if you prefer email
Warren Kinghorn	[REDACTED]	DURHAM 27705	<input checked="" type="checkbox"/> Yes, add me to the project database Enter email below if you prefer email
Jim Kessler			<input type="checkbox"/> Yes, add me to the project database Enter email below if you prefer email
Polly Russell	[REDACTED]		<input type="checkbox"/> Yes, add me to the project database Enter email below if you prefer email
[REDACTED]	[REDACTED]		<input checked="" type="checkbox"/> Yes, add me to the project database Enter email below if you prefer email
Betty White	[REDACTED]		<input checked="" type="checkbox"/> Yes, add me to the project database Enter email below if you prefer email



PLEASE SIGN IN!

Durham-Orange Light Rail Transit Project

Page ____ of ____

Meeting Date _____ Location _____

Name	Home Address	City, State, Zip	Email
JEFF BATALCHUCK	[REDACTED]	Durham NC 27704	<input checked="" type="checkbox"/> Yes, add me to the project database [REDACTED]
TED Smith	[REDACTED]	DURHAM NC 27705	<input checked="" type="checkbox"/> Yes, add me to the project database Enter email below if you prefer email [REDACTED]
TP GREENE	[REDACTED]	DURHAM NC 27701	<input checked="" type="checkbox"/> Yes, add me to the project database [REDACTED]
Ellen Beckham	[REDACTED]	Wikeem 27701	<input type="checkbox"/> Yes, add me to the project database Enter email below if you prefer email _____
TOM MORAN	[REDACTED]	Raleigh 27607	<input checked="" type="checkbox"/> Yes, add me to the project database Enter email below if you prefer email [REDACTED]
CHRIS Leach	[REDACTED]	Durham 27712	<input checked="" type="checkbox"/> Yes, add me to the project database [REDACTED]
Omar BGASLEY	[REDACTED]	DURHAM NC 27703	<input checked="" type="checkbox"/> Yes, add me to the project database [REDACTED]
Bob Gutman	[REDACTED]	" " 01	<input checked="" type="checkbox"/> Yes, add me to the project database Enter email below if you prefer email [REDACTED]
Merie Snipes	[REDACTED]	Durham 27703	<input checked="" type="checkbox"/> Yes, add me to the project database Enter email below if you prefer email _____
Edil Bentley	[REDACTED]	Durham NC 27705	<input checked="" type="checkbox"/> Yes, add me to the project database Enter email below if you prefer email _____
Bennie Mock	[REDACTED]	High Point NC 27263	<input type="checkbox"/> Yes, add me to the project database Enter email below if you prefer email _____
			<input type="checkbox"/> Yes, add me to the project database Enter email below if you prefer email _____



PLEASE SIGN IN!

Durham-Orange Light Rail Transit Project
 Meeting Date _____ Location _____

Page ____ of ____

Name	Home Address	City, State, Zip	Email
Jeremy Hann	[Redacted]	→	<input type="checkbox"/> Yes, add me to the project database Enter email below if you prefer email _____
Bill Hoover	[Redacted]	Durham, NC 27705	<input type="checkbox"/> Yes, add me to the project database Enter email below if you prefer email _____
Ann C. Howard	[Redacted]	Boydton, Va 23917	<input type="checkbox"/> Yes, add me to the project database Enter email below if you prefer email _____
Stephen S. Howard	[Redacted]	Durham, 27712	<input type="checkbox"/> Yes, add me to the project database Enter email below if you prefer email _____
Taye & Richard Trilliz			<input type="checkbox"/> Yes, add me to the project database Enter email below if you prefer email _____
RICK LEINKAS			<input type="checkbox"/> Yes, add me to the project database Enter email below if you prefer email _____
Rick Porter	[Redacted]	Wake Forest NC 27587	<input checked="" type="checkbox"/> Yes, add me to the project database [Redacted]
Meg Scully	[Redacted]	Durham NC 27701	<input type="checkbox"/> Yes, add me to the project database Enter email below if you prefer email _____
_____	_____	_____	<input type="checkbox"/> Yes, add me to the project database Enter email below if you prefer email _____
_____	_____	_____	<input type="checkbox"/> Yes, add me to the project database Enter email below if you prefer email _____
_____	_____	_____	<input type="checkbox"/> Yes, add me to the project database Enter email below if you prefer email _____
Jim Hessler	_____	_____	<input type="checkbox"/> Yes, add me to the project database Enter email below if you prefer email _____



PLEASE SIGN IN!

Durham-Orange Light Rail Transit Project

Page ____ of ____

Meeting Date _____ Location _____

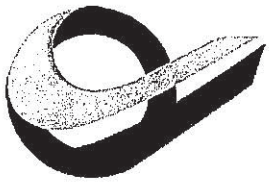
Name	Home Address	City, State, Zip	Email
Tommy Clayton	[REDACTED]	Durham	<input type="checkbox"/> Yes, add me to the project database Enter email below if you prefer email _____
MARGARET ROBERTSON	[REDACTED]	Wake Forest	<input type="checkbox"/> Yes, add me to the project database Enter email below if you prefer email _____
Robert & Healy	[REDACTED]	Durham	<input type="checkbox"/> Yes, add me to the project database Enter email below if you prefer email _____
John Hooges-Copple	[REDACTED]	DURHAM 27701	<input type="checkbox"/> Yes, add me to the project database Enter email below if you prefer email _____
Linda Thomas Waller	[REDACTED]	Durham, NC	<input type="checkbox"/> Yes, add me to the project database Enter email below if you prefer email _____
LINDA SMITH	[REDACTED]	Durham, NC	<input type="checkbox"/> Yes, add me to the project database Enter email below if you prefer email _____
BRUCE MITCHELL	[REDACTED]	DURHAM 27707	<input checked="" type="checkbox"/> Yes, add me to the project database [REDACTED]
Brian Buzby	[REDACTED]	Durham 27707	<input type="checkbox"/> Yes, add me to the project database Enter email below if you prefer email _____
Tracy Lovett	[REDACTED]	Durham 27713	<input checked="" type="checkbox"/> Yes, add me to the project database [REDACTED]
Peter Anderson	[REDACTED]	Durham 27712	<input checked="" type="checkbox"/> Yes, add me to the project database [REDACTED]
Martha Lynn Ballard	[REDACTED]	Durham 27701	<input checked="" type="checkbox"/> Yes, add me to the project database Enter email below if you prefer email [REDACTED]
			<input type="checkbox"/> Yes, add me to the project database Enter email below if you prefer email _____



PLEASE SIGN IN!

Durham-Orange Light Rail Transit Project
 Meeting Date _____ Location _____

Name	Home Address	City, State, Zip	Email
Chris Tiffany	[REDACTED]	PO Box 25331 Durham NC 27702	<input type="checkbox"/> Yes, add me to the project database Enter email below if you prefer email [REDACTED]
TAD AUNT	[REDACTED]	103 W. Main Street Durham, NC 27701	<input type="checkbox"/> Yes, add me to the project database Enter email below if you prefer email _____
[Signature]	[REDACTED]	Durham NC 27707	<input type="checkbox"/> Yes, add me to the project database Enter email below if you prefer email _____
[Signature]	[REDACTED]	[REDACTED]	<input type="checkbox"/> Yes, add me to the project database Enter email below if you prefer email _____
[REDACTED]	[REDACTED]	[REDACTED]	<input type="checkbox"/> Yes, add me to the project database Enter email below if you prefer email _____
[REDACTED]	[REDACTED]	[REDACTED]	<input type="checkbox"/> Yes, add me to the project database Enter email below if you prefer email _____
[REDACTED]	[REDACTED]	[REDACTED]	<input type="checkbox"/> Yes, add me to the project database Enter email below if you prefer email _____
[REDACTED]	[REDACTED]	[REDACTED]	<input type="checkbox"/> Yes, add me to the project database Enter email below if you prefer email _____
[REDACTED]	[REDACTED]	[REDACTED]	<input type="checkbox"/> Yes, add me to the project database Enter email below if you prefer email _____
[REDACTED]	[REDACTED]	[REDACTED]	<input type="checkbox"/> Yes, add me to the project database Enter email below if you prefer email _____
[REDACTED]	[REDACTED]	[REDACTED]	<input type="checkbox"/> Yes, add me to the project database Enter email below if you prefer email _____



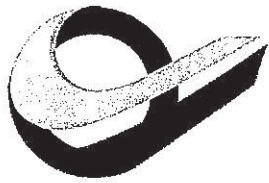
PLEASE SIGN IN!

Durham-Orange Light Rail Transit Project

Meeting Date Avon Boys + Girls Club Page 1

↳ 6/6/2015

Name	Home Address	City, State, Zip	Email
Scott Whiteman	[REDACTED]	Durham	<input type="checkbox"/> Yes, add me to the project database Enter email below if you prefer email _____
Brinda Whiteman	[REDACTED]	Durham	<input type="checkbox"/> Yes, add me to the project database Enter email below if you prefer email _____
KEN CHIHA	[REDACTED]	DURHAM, NC 27713	<input checked="" type="checkbox"/> Yes, add me to the project database [REDACTED]
			<input type="checkbox"/> Yes, add me to the project database Enter email below if you prefer email _____
			<input type="checkbox"/> Yes, add me to the project database Enter email below if you prefer email _____
			<input type="checkbox"/> Yes, add me to the project database Enter email below if you prefer email _____
			<input type="checkbox"/> Yes, add me to the project database Enter email below if you prefer email _____
			<input type="checkbox"/> Yes, add me to the project database Enter email below if you prefer email _____
			<input type="checkbox"/> Yes, add me to the project database Enter email below if you prefer email _____
			<input type="checkbox"/> Yes, add me to the project database Enter email below if you prefer email _____
			<input type="checkbox"/> Yes, add me to the project database Enter email below if you prefer email _____



PLEASE SIGN IN!

Durham-Orange Light Rail Transit Project

Meeting Date 6/6/2015

Page 2

Name	Home Address	City, State, Zip	Email
Kendall Smith	[REDACTED]	Durham Nc 27701	<input type="checkbox"/> Yes, add me to the project database Enter email below if you prefer email
Michael K22/3	[REDACTED]	Durham NC	<input checked="" type="checkbox"/> Yes, add me to the project database Enter email below if you prefer email [REDACTED]
A.C. Eaton	[REDACTED]	Durham 27701	<input checked="" type="checkbox"/> Yes, add me to the project database Enter email below if you prefer email
Bill Conroy	[REDACTED]	Durham 27704	<input type="checkbox"/> Yes, add me to the project database Enter email below if you prefer email
Larry & Marilyn Hawley	[REDACTED]	Durham 27704	<input type="checkbox"/> Yes, add me to the project database Enter email below if you prefer email [REDACTED]
Jim Svare	[REDACTED]	27705	<input type="checkbox"/> Yes, add me to the project database Enter email below if you prefer email [REDACTED]
design solutions inc			<input type="checkbox"/> Yes, add me to the project database Enter email below if you prefer email
Dick Hails	[REDACTED]	D, NC 27701	<input checked="" type="checkbox"/> Yes, add me to the project database Enter email below if you prefer email
FRODO DAVIS	[REDACTED]	DUR. NC 27713	<input checked="" type="checkbox"/> Yes, add me to the project database Enter email below if you prefer email
Willie Hood	[REDACTED]		<input type="checkbox"/> Yes, add me to the project database Enter email below if you prefer email
			<input type="checkbox"/> Yes, add me to the project database Enter email below if you prefer email
			<input type="checkbox"/> Yes, add me to the project database Enter email below if you prefer email



PLEASE SIGN IN!

Durham-Orange Light Rail Transit Project
 Meeting Date 10/6/15

Location Avery

Name	Home Address	City, State, Zip	Email
Leonzo Williams	[REDACTED]	Durham, NC 27712	<input type="checkbox"/> Yes, add me to the project database Enter email below if you prefer email _____
MARS GUNN	[REDACTED]	DURHAM, NC 27712	<input checked="" type="checkbox"/> Yes, add me to the project database Enter email below if you prefer email _____
DARCO McCOMB	[REDACTED]	DURHAM N.C. 27705	<input type="checkbox"/> Yes, add me to the project database Enter email below if you prefer email _____
RAY ERQUHART	[REDACTED]	Duch NC 27207	<input checked="" type="checkbox"/> Yes, add me to the project database Enter email below if you prefer email _____
Arenza Orr	[REDACTED]	Durham, NC 27701	<input type="checkbox"/> Yes, add me to the project database Enter email below if you prefer email _____
Mayor Bill Bell	_____	_____	<input type="checkbox"/> Yes, add me to the project database Enter email below if you prefer email _____
Keith Chadwell	[REDACTED]		<input type="checkbox"/> Yes, add me to the project database Enter email below if you prefer email _____
_____			<input type="checkbox"/> Yes, add me to the project database Enter email below if you prefer email _____
Jocelynn Chadwell	[REDACTED]	Lawrenceville, VA	<input type="checkbox"/> Yes, add me to the project database Enter email below if you prefer email _____
Marisa McNally	[REDACTED]	Durham 27701	<input type="checkbox"/> Yes, add me to the project database Enter email below if you prefer email _____
			<input type="checkbox"/> Yes, add me to the project database Enter email below if you prefer email _____
			<input type="checkbox"/> Yes, add me to the project database Enter email below if you prefer email _____



PLEASE SIGN IN!

Durham-Orange Light Rail Transit Project

Meeting Date 6/6/15

Location Arena

Name	Home Address	City, State, Zip	Email
David Landicina			<input type="checkbox"/> Yes, add me to the project database Enter email below if you prefer email _____
Don LETKES		DURHAM NC	<input type="checkbox"/> Yes, add me to the project database Enter email below if you prefer email _____
Brian Crandell		Hillsborough, NC	<input type="checkbox"/> Yes, add me to the project database Enter email below if you prefer email _____
Chris Selby		Durham NC 27517	<input type="checkbox"/> Yes, add me to the project database Enter email below if you prefer email _____
MILTON CUNN		DURHAM, NC	<input type="checkbox"/> Yes, add me to the project database Enter email below if you prefer email _____
Lashawna Powell		Durham NC	<input type="checkbox"/> Yes, add me to the project database Enter email below if you prefer email _____
Travis Perry		Durham NC	<input type="checkbox"/> Yes, add me to the project database Enter email below if you prefer email _____
Brenda L. Fox			<input type="checkbox"/> Yes, add me to the project database Enter email below if you prefer email _____
Edgar McC		Durham NC	<input type="checkbox"/> Yes, add me to the project database Enter email below if you prefer email _____
Alex Cybanc		Durham NC	<input checked="" type="checkbox"/> Yes, add me to the project database Enter email below if you prefer email _____
			<input type="checkbox"/> Yes, add me to the project database Enter email below if you prefer email _____
			<input type="checkbox"/> Yes, add me to the project database Enter email below if you prefer email _____