

Appendix K-2e: Line-Wide Design Open House

Durham-Orange Light-Rail Transit Project



April 2018

Line-Wide Design Open House

1. Meeting Details.....	2
2. Agenda	3
3. Staffing.....	3
4. Outreach Overview	4
5. Description of Open House Meetings.....	5
6. Online Meeting	6
7. Outreach Materials	8
8. Meeting Materials	20
9. Comments.....	37
10. Sign-In Sheets.....	54

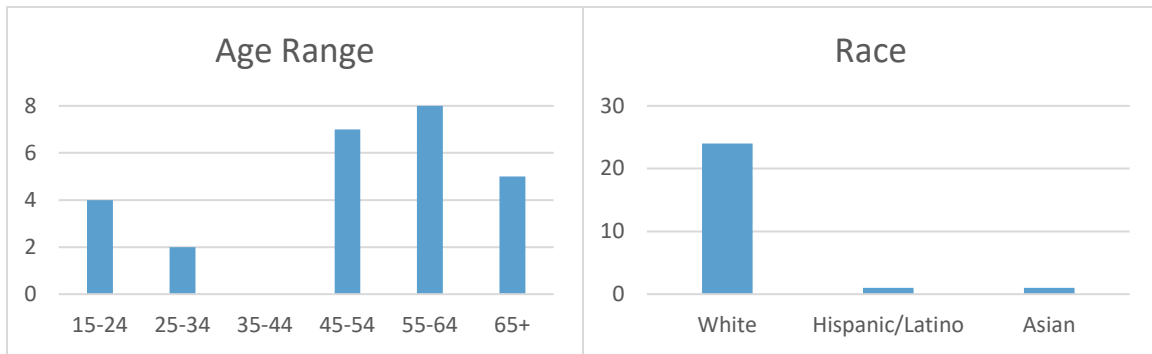
This page intentionally left blank.

1. Meeting Details

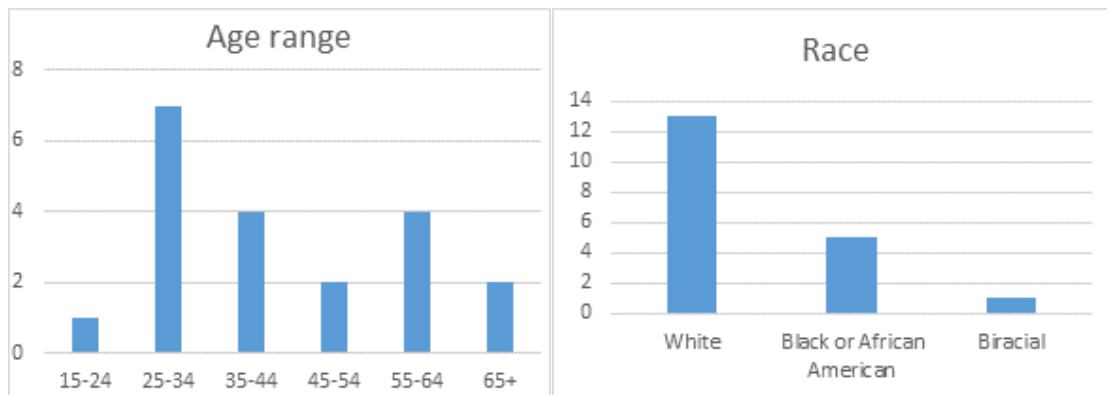
Date	Time	Location	Attendees
Tuesday, April 24, 2018	6 to 8 p.m.	Extraordinary Ventures 200 S Elliot Road, Chapel Hill, NC	68
Thursday, April 26, 2018	6 to 8 p.m.	Holton Career and Resource Center 401 N. Driver St, Durham, NC	41

Demographic information was collected during registration at both events. This information was not required for sign-in, and only a portion of attendees voluntarily provided it. The charts below include the information that participants volunteered.

Participant Demographics* - Chapel Hill Workshop



Participant Demographics* - Durham Workshop



* Demographic and locational information was optional. Results are not comprehensive.

2. Agenda

April 24 Meeting:

- 3:00 p.m. – Arrival, set-up
- 5:30 p.m. – Team meeting
- 6:00 p.m. – Open house begins
- 8:00 p.m. – Open house ends
- 8:00 - 9:00 p.m. – Breakdown

April 26 Meeting:

- 2:00 p.m. – Arrival, set-up
- 5:30 p.m. – Team meeting
- 6:00 p.m. – Open house begins
- 8:00 p.m. – Open house ends
- 8:00 - 9:00 p.m. – Breakdown

3. Staffing

D-O LRT Project Team Members and HDR staff attended the meeting. Roles included participant sign in, meeting tour guide, Bland Street Station tour guide, design station staff, "Ask an Expert" table staff, media relations, and general-purpose floater.

Name	Role	Organization	Meeting 1	Meeting 2
Robin Baker	Tour guide, floater	GoTriangle	x	x
Elizabeth Macam	Sign-in	GoTriangle	x	x
Matthew Clark	Floater	GoTriangle	x	x
Juanita Shearer-Swink	"Ask an Expert" table	GoTriangle	x	x
Dave Charters	"Ask an Expert" table	GoTriangle	x	x
Geoff Green	Bland Street Station guide	GoTriangle	x	x
Keith Ferguson	Tour guide/background board staff	GoTriangle	x	x
Elisabeth Raskopf	Tour guide/design station staff	GoTriangle		x
Willie Noble	Tour guide/"Ask an Expert" table	GoTriangle	x	x
Katharine Eggleston	Floater	GoTriangle	x	x
Meghan Makoid	Tour guide/background board staff	GoTriangle	x	x

Jay Heikes	Design station staff	GoTriangle	x	x
Patrick McDonough	Floater	GoTriangle	x	x
Bryan Hammond	Bland Street Station guide	GoTriangle	x	x
Juan Carlos Erickson	Media relations	GoTriangle		x
Hart Evans	Sign-in table	GoTriangle	x	x
Racheal Baker	Floater	GoTriangle	x	x
Geordian Herron	Tour guide	GoTriangle	x	
Anna Marie Scott	Floater	GoTriangle	x	
Tom Henry	Floater	GoTriangle	x	x
Amy Stabler	Tour guide/background board staff	HDR	x	x
Suzanne Baumgardt	Design station staff	HDR	x	x

4. Outreach Overview

The outreach materials for these meetings included emails to GoTriangle’s MailChimp list for the light-rail project, social media posts, radio ads, online ads, a flyer and pop-up outreach.

Outreach Item	Number	Responsibility	Distribution Dates
Major stakeholder email	2	GoTriangle – DOLRT	4/18, 4/24
Social media (Facebook)	4	GoTriangle – Communications	4/10, 4/16, 4/19, 4/23
Social media (Twitter)	11	GoTriangle – Communications	4/9, 4/10, 4/11, 4/13, 4/16, 4/18, 4/19, 4/21, 4/23, 4/24, 4/26
Radio spots	1	GoTriangle – DOLRT	4/12-4/25
Online ad (IndyWeek.com)	2	GoTriangle – Communications	4/9-4/15, 4/16-4/20
Flyer	1	HDR	3/28
Website update	NA	GoTriangle - DOLRT	
Pop-up outreach	6	GoTriangle- DOLRT	4/7, 4/9, 4/16, 4/17, 4/18, 4/20

5. Description of Open House Stations

Both open houses included three main display areas.

Background

Staff referenced three print boards to walk attendees through the basics of light rail, to show the alignment and to explain the project timeline.



Station Tour

Next, participants moved to a virtual tour of the LYNX Blue Line’s Bland Street Station in Charlotte, NC.

Two staff members guided a “walk through” of the station using Google’s streetview function to familiarize participants with the common components of a light rail station. Staff also pointed out which components can receive aesthetic treatments – especially pavement, windscreens and canopies – to prepare the audience for the next station.

Design Themes

In January and February, GoTriangle hosted two interactive workshops and one online meeting to allow community members to help to craft visual design themes for the light-rail system. Three strong themes emerged: Cultural Diversity, Research and Innovation and Natural Heritage.

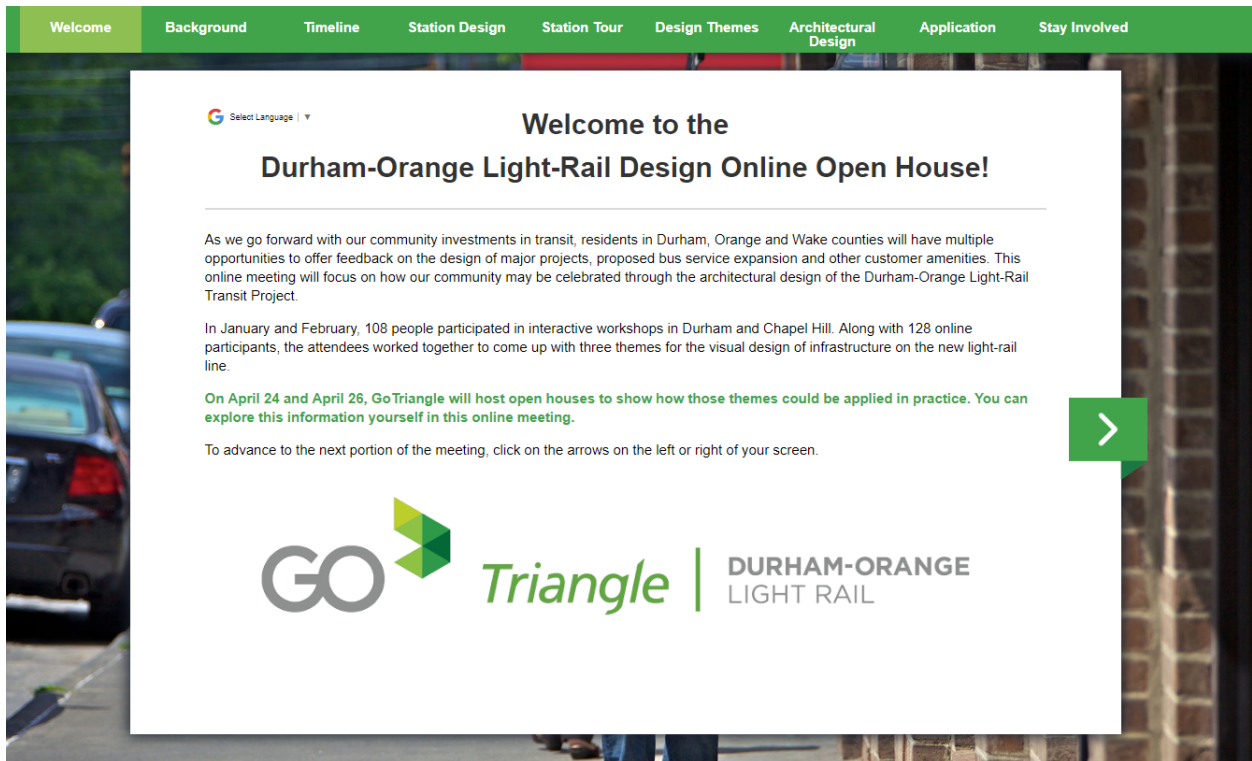
The third station showed open house attendees how the project’s architects translated those ideas into families of patterns, textures and colors that can be used in station design.

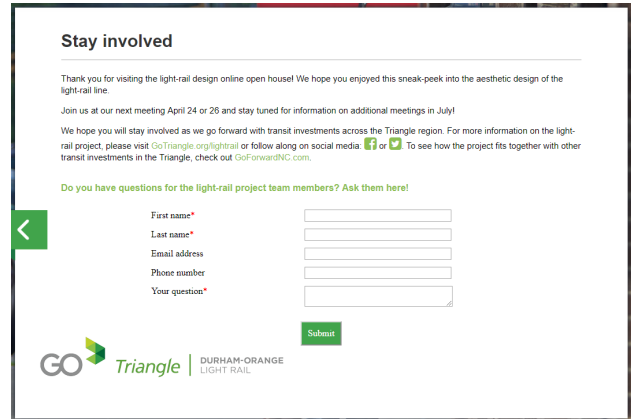
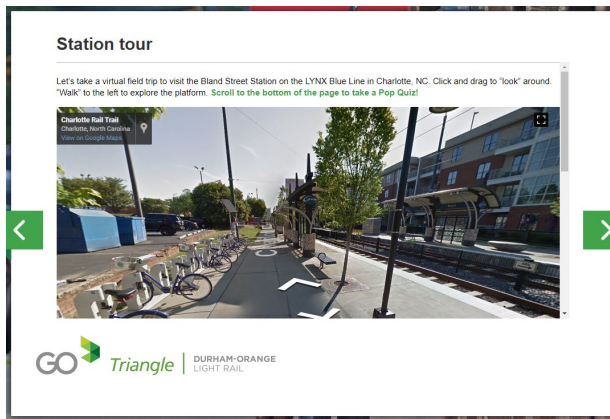


6. Online Meeting

An interactive online meeting was made available between March 28 and May 11, 2018 to allow participation without physical attendance at a workshop. The online meeting paralleled the structure of the in-person open houses. It provided project background, oriented visitors to the common elements of a light rail station using Google Streetview and presented preliminary design families for the system's stations. At the conclusion of the online meeting, a comment form allowed participants to provide feedback or ask questions.

Overall, there were 1,417 visits to the online meeting with 1,175 being new users. The overwhelming majority of visitors, 705 participants, viewed the online meeting via mobile device with 477 viewing a on a desktop computer and 76 on tablets. Facebook generated the most visits with 428 referrals, followed by Instagram with 90 and Twitter with 32. The top cities of visitors who logged onto the site were Durham, Charlotte, Raleigh and Chapel Hill. The average session duration for the online meeting was low, lasting only 31 seconds. There were 127 users who viewed the site for longer than 60 seconds.





Participants submitted 23 comments through the online meeting form. Overall, there were five positive comments supporting the project and two comments expressing overall skepticism or concern about the proposed light-rail system. The main questions given through the online comments related to bicycle accessibility, the ability to prevent vandalism at stations, possible light and noise pollution and questions relating to routing. Participants expressed enthusiasm about the project timelines, design plans and accessibility for students and seniors.

OUTREACH MATERIALS

This page intentionally left blank.



Dear ,

We're building the future, and it's time to see it for yourself! Please join us to weigh in on elements of visual design for the new light-rail system.

GoTriangle is hosting two public meetings in April to provide an update on the line-wide appearance of Durham and Orange counties' new light-rail line. Join us to see how our community may be celebrated through the architectural design of the light-rail system.

TUESDAY, APRIL 24

6 to 8 p.m.

Extraordinary Ventures
200 S Elliott Road
Chapel Hill, NC 27514

THURSDAY, APRIL 26

6 to 8 p.m.

Holton Career & Resource Center
401 N Driver Street
Durham, NC 27703

Drop in any time between 6 and 8 p.m. at one of these interactive open houses. The content of both will be the same.

The light rail project is a 17.7-mile infrastructure investment, which will provide over 26,000 trips per day to residents and commuters. This rail project will provide a

congestion-free transportation alternative that connects the people in our communities to jobs, healthcare, and education in Durham and Chapel Hill.



Participate Online

If you are unable to attend in person, please visit our [online open house](#). You will be able to provide your input through May 11, 2018.

Special Accommodations

If you need special accommodations (translation or interpretation), contact GoTriangle at 919-485-7572 five days before the meeting to make arrangements.

Acomodaciones Especiales

Si necesita acomodaciones especiales (traducción o interpretación) comuníquese con GoTriangle al 919-485-7572 cinco días antes de la reunión para hacer arreglos con el equipo del proyecto.



Copyright © 2018 GoTriangle, All rights reserved.

You are receiving this email because you want to learn more about the Durham, Orange and/or Wake County Transit Plans.

Our mailing address is:

GoTriangle
4600 Emperor Blvd Ste 100
Durham, NC 27703-8578

[Add us to your address book](#)

Want to change how you receive these emails?
You can [update your preferences](#) or [unsubscribe from this list](#).



GO  Triangle | DURHAM-ORANGE LIGHT RAIL

LIGHT-RAIL DESIGN OPEN HOUSES

Tuesday, April 24th 6 to 8 p.m. Extraordinary Ventures 200 S Elliott Road Chapel Hill, NC 27514	Thursday, April 26th 6 to 8 p.m. Holton Career & Resource Center 401 N Driver Street Durham, NC 27703	Participate Online www.lightrailonline.com
--	--	---

GO FORWARD
A COMMUNITY INVESTMENT IN TRANSIT



GO  Triangle | DURHAM-ORANGE LIGHT RAIL

CHAPEL HILL LIGHT-RAIL DESIGN OPEN HOUSE

Tuesday, April 24 6 to 8 p.m.	Extraordinary Ventures 200 S Elliott Road Chapel Hill, NC 27514	Participate Online www.lightrailonline.com
---	---	---

GO FORWARD
A COMMUNITY INVESTMENT IN TRANSIT



GoTriangle added an event.

April 9 · 🌐

We're building the future, and it's time to see for yourself! Join us to review what we learned in two recent design workshops and weigh in on elements of visual design for the new light-rail system.

Can't join us in person? Share your thoughts online at www.lightrailonline.com. Open through May 11.



TUE, APR 24

Light-rail Design Open House - Chapel Hill

Extraordinary Ventures · Chapel Hill, NC

★ Interested

 You like GoTriangle

 Like

 Comment

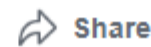


GoTriangle

April 16 · 🌐



Which one of the light-rail design open houses will you be joining us at?
Light-rail Design Open House - Durham or Light-rail Design Open House - Chapel Hill?

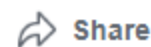


GoTriangle

April 19 · 🌐



Only a few more days until the light-rail design open houses! Be sure to join us in Chapel Hill on Tuesday, April 24 or Durham on Thursday, April 26.





GoTriangle

April 23 at 2:04pm · 



Can't make it to our two open houses on light rail's visual design? Participate online here:



LIGHTRAILONLINE.COM

Durham-Orange Light-Rail Design Online Open House

This online meeting will focus on how our community may be celebrated...



Like



Comment



Share



GoTriangle

April 26 at 11:23am · 🌐



At least two dozen people had gathered around exhibits showing design plans for parts of Durham and Orange counties' light-rail project even before a GoTriangle open house at Extraordinary Ventures in Chapel Hill officially began at 6 p.m. Tuesday.

Tonight, the public has another chance to drop in and offer feedback on the designs between 6 and 8 p.m. at the Holton Career & Resource Center at 401 N. Driver St. in Durham.

Read more: <http://goforwardnc.org/textures-patterns-colors-public-has.../>



 Like

 Comment

 Share

WUNC Public Radio Ads

Restrictions: 24 word limit after sponsor name

...support comes from...

GoTriangle, hosting public meetings April twenty fourth and twenty sixth on the appearance of our new light rail. Information online at: [Go Triangle dot org](http://GoTriangle.org) (24 words)

GoTriangle, hosting public meetings April twenty fourth and twenty sixth on the Durham Orange Light Rail Transit Project. Information online at: [Go Triangle dot org](http://GoTriangle.org) (24 words)

GoTriangle, hosting public meetings April twenty fourth and twenty sixth to discuss the architectural design of the light rail project. Details at: [Go Triangle dot org](http://GoTriangle.org) (25 words)

GoTriangle, hosting public meetings April twenty fourth and twenty sixth to explore the look and feel of the light rail system. Details at: [Go Triangle dot org](http://GoTriangle.org) (26 words)



Get updates on the light-rail design at open houses in April

We're building the future, and it's time to see it for yourself! Join us to review what we learned during two recent public design workshops and weigh in on elements of visual design for the new light-rail system.

TUESDAY, APRIL 24

6 to 8 p.m.

Extraordinary Ventures
200 S Elliott Road
Chapel Hill, NC 27514

THURSDAY, APRIL 26

6 to 8 p.m.

Holton Career & Resource Center
401 N Driver Street
Durham, NC 27703

Drop in any time!
This will be an interactive open house. The content of both meetings will be the same.

Participate Online

Can't make it in person? Participate online! Get the information you need and share your thoughts by clicking here: www.lightrailonline.com
Provide your input online through May 11.

Special Accommodations

If you need special accommodations such as translation or interpretation, contact GoTriangle at 919-485-7572 five days before the meeting to make arrangements.

Si necesita acomodaciones especiales (traducción o interpretación) comuníquese con GoTriangle al 919-485-7572 cinco días antes de la reunión para hacer arreglos con el equipo del proyecto.

Get Connected



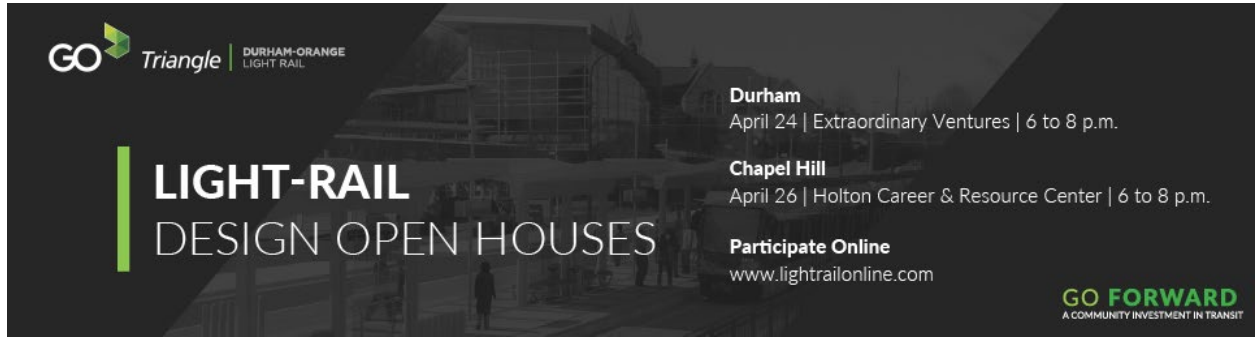
@GoTriangle



@GoTriangle



www.GoTriangle.org



GO Triangle | DURHAM-ORANGE LIGHT RAIL

**LIGHT-RAIL
DESIGN OPEN HOUSES**

Durham
April 24 | Extraordinary Ventures | 6 to 8 p.m.

Chapel Hill
April 26 | Holton Career & Resource Center | 6 to 8 p.m.

Participate Online
www.lightrailonline.com

GO FORWARD
A COMMUNITY INVESTMENT IN TRANSIT

This page intentionally left blank.

MEETING MATERIAL

Background Boards

This page intentionally left blank.




 **Power**
Electric and quiet

 **Speed**
Maximum of 55 MPH
Average of 35 MPH

 ADA accessible

 On-board seating and standing access

 Bike access and bike racks

 **Capacity**
150 - 170 passengers per car

 **Schedule**
10 - 20 minute intervals

PROJECT TIMELINE

GO **Triangle** | DURHAM-ORANGE LIGHT RAIL

1990s	Regional studies begin to show a need for higher capacity transit options in the Triangle. Road widening, intensified bus service and rail investments are all explored.
2000s	Light-rail transit emerges as the most reliable and environmentally feasible alternative to the congested roadway network in the Durham – Orange corridor. Detailed planning begins.
2011	Durham County voters approve a half-cent sales tax for bus and rail investments.
2012	Orange County voters approve a half-cent sales tax for bus and rail investments.
2012 - 2016	Required federal planning and environmental studies examine the light rail's potential impact on air quality, streams, wetlands, endangered plants and animals, neighborhoods, historic and community resources and more. Changes are made to avoid and minimize impacts.
2017	The Durham-Orange Light-Rail Transit Project receives authorization from the Federal Transit Administration to move into the final stages of design and engineering.
2020	Construction is projected to begin as design and engineering are completed.
2028	Light-rail service is expected to begin! People in Durham and Orange counties will have dependable, time-competitive connections to the places they, live, work, learn and play.

LIGHT-RAIL ROUTE MAP

GO **Triangle** | DURHAM-ORANGE LIGHT RAIL

Addition of proposed Blackwell/Magnum station under study.

MEETING MATERIAL

Design Station Slides

This page intentionally left blank.

Cultural Fusion



CULTURAL FUSION

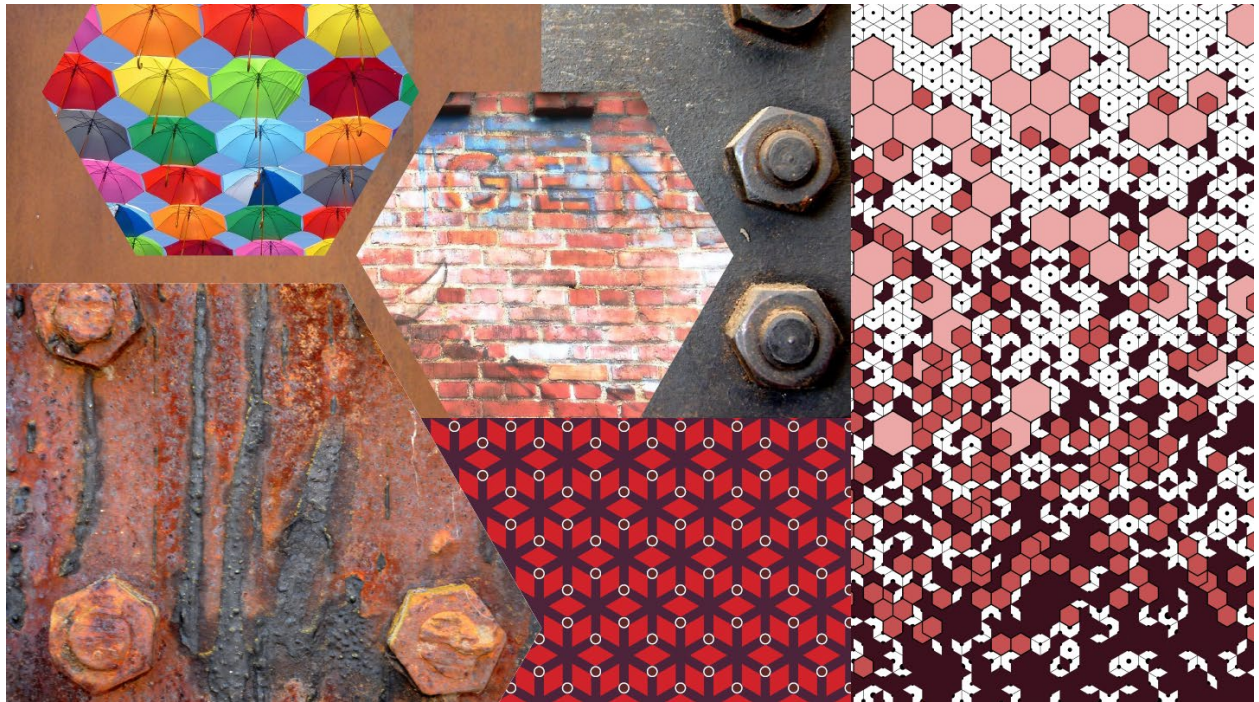


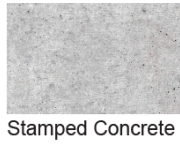
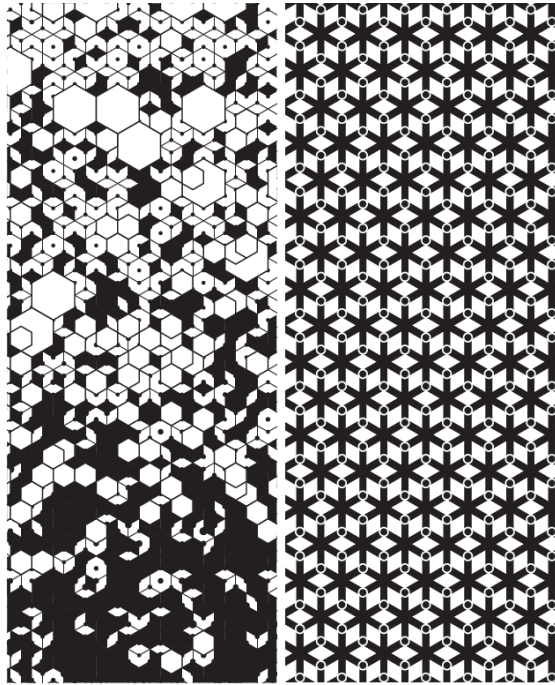
CULTURAL
FUSION & DIVERSITY



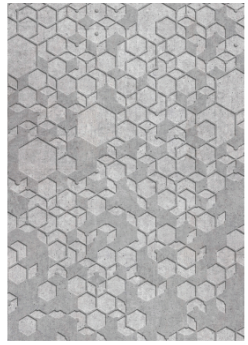
= CULTURAL HERITAGE =

WARM
COLORFUL
VIBRANT
TEXTURAL
EGALITARIAN
DIVERSE

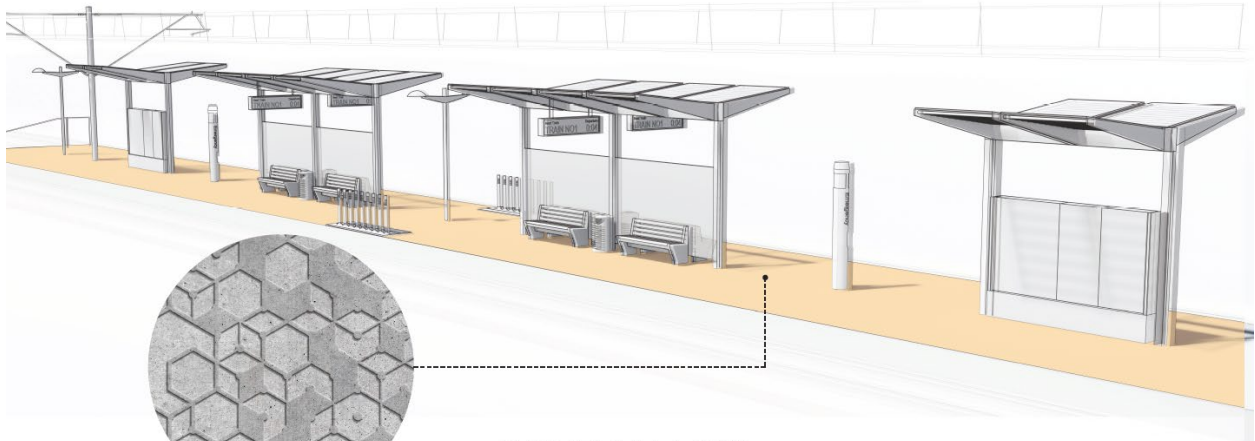




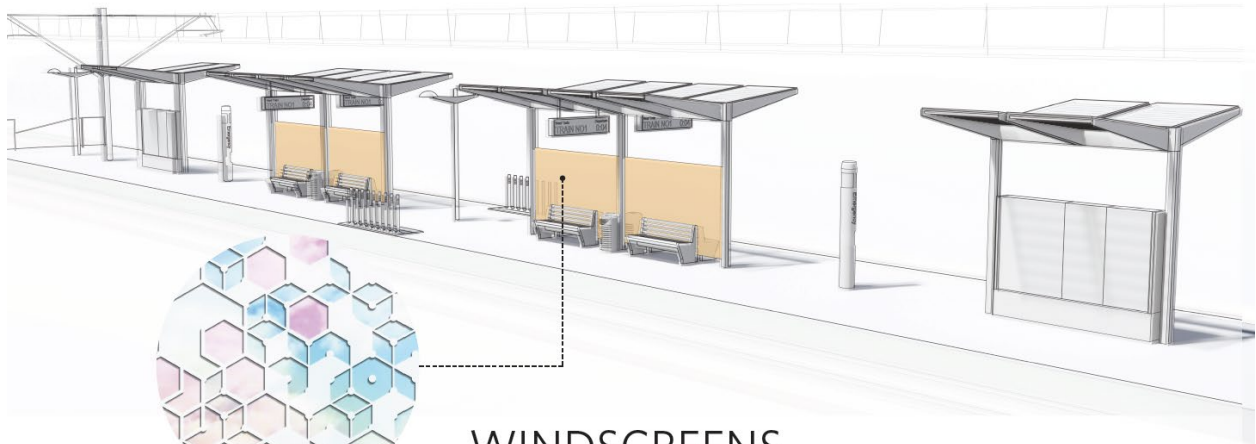
Stamped Concrete



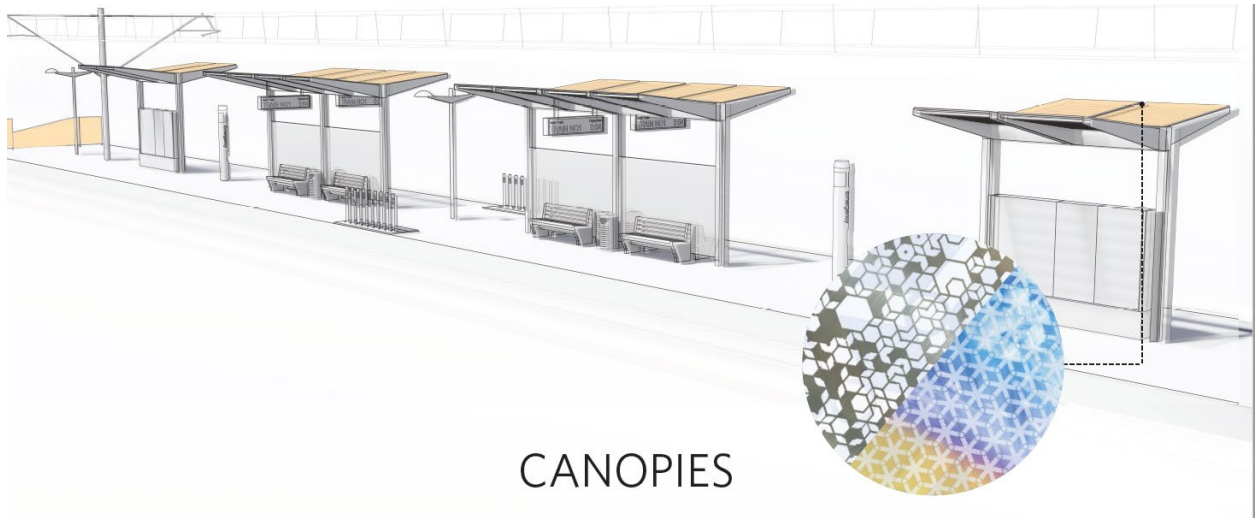
Wind Screen Glass



SIDEWALKS



WINDSCREENS



CANOPIES

Natural Heritage and River



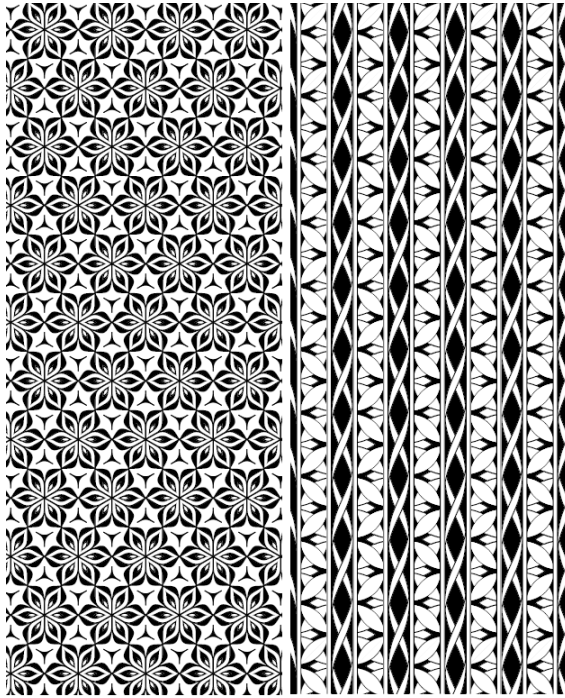
Duke University



== NATURAL ==
== HERITAGE ==

SUSTAINABLE
ORGANIC
GREEN
ENVIRONMENTAL
ECOLOGICAL
RURAL

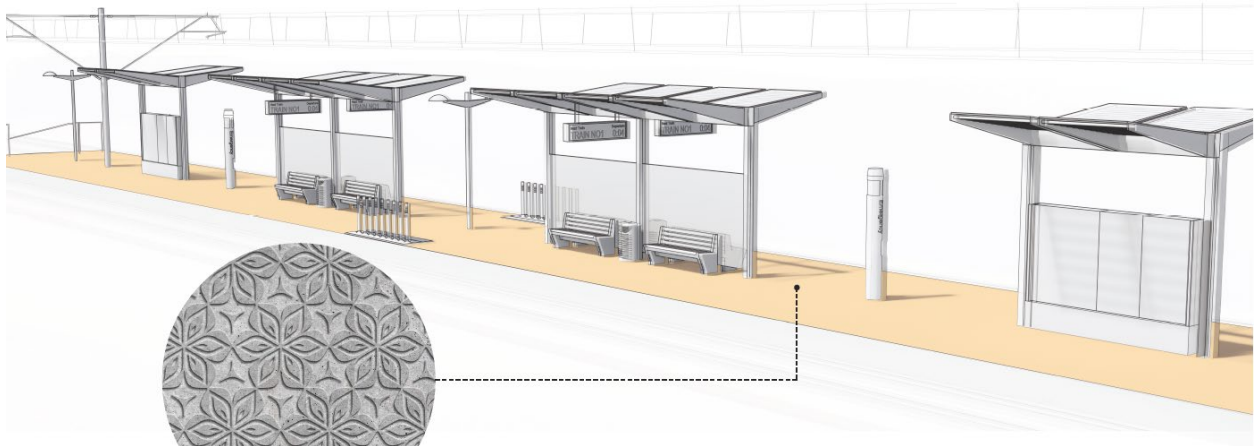




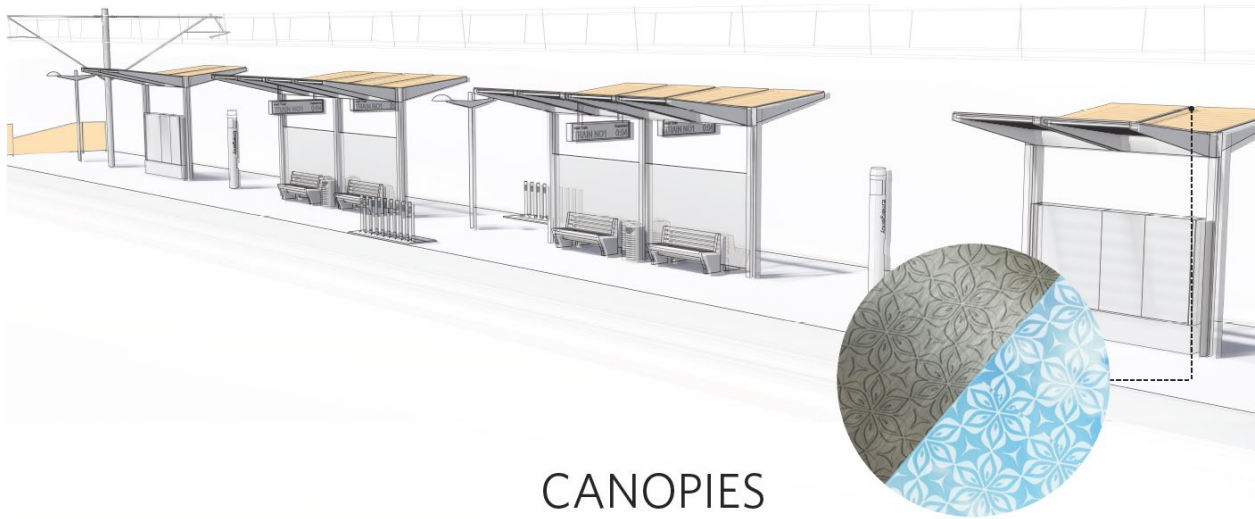
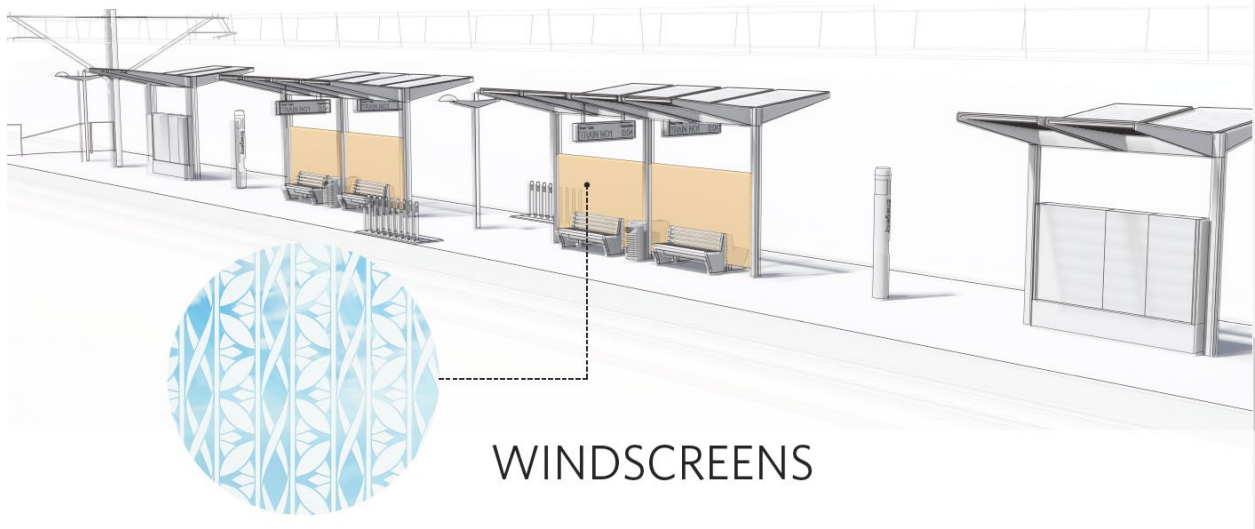
Stamped Concrete



Wind Screen Glass



SIDEWALKS



Research & Innovation

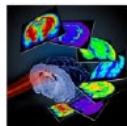


bronto
software

Research & Innovation

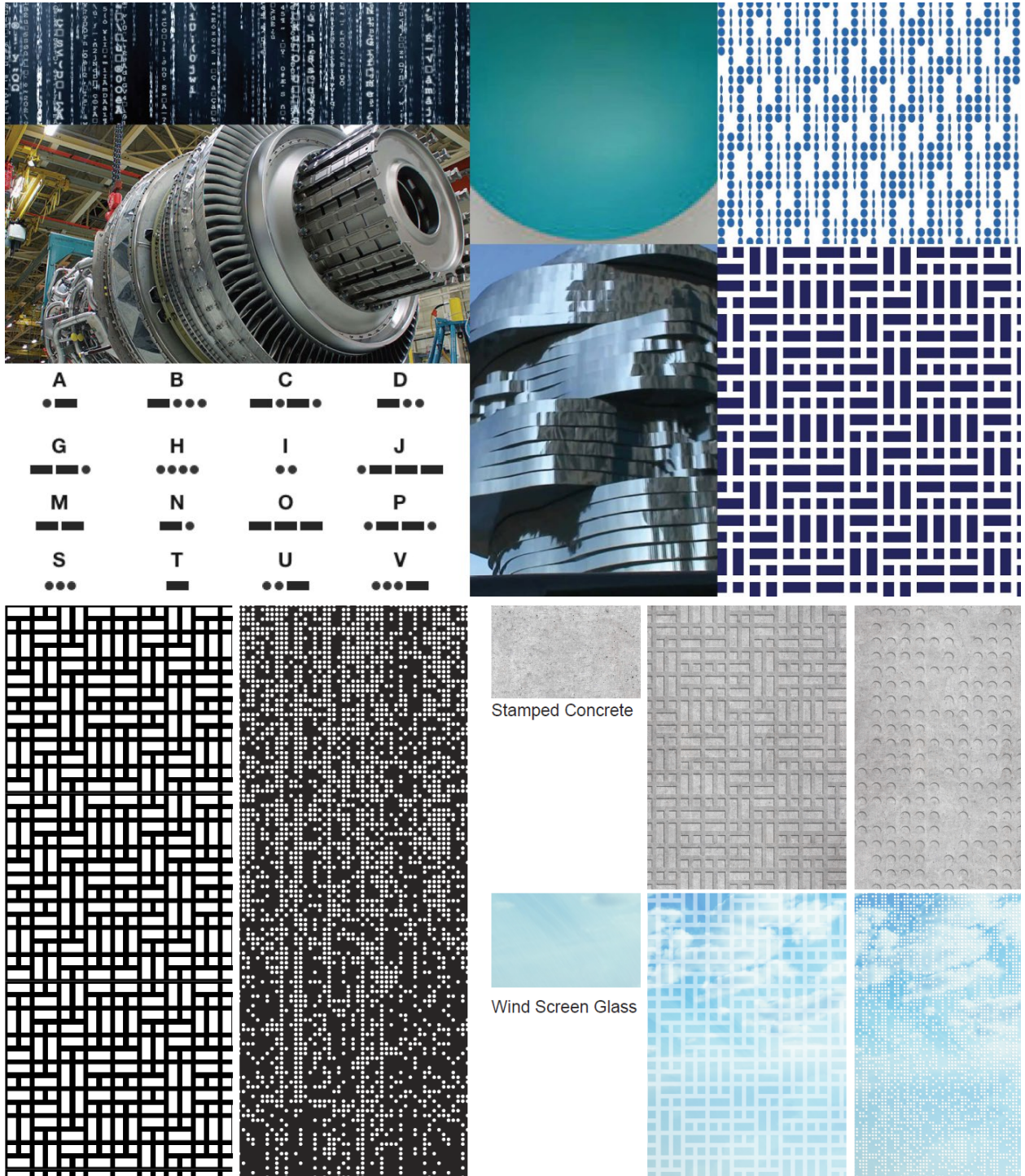


launch
CH



am.
underground

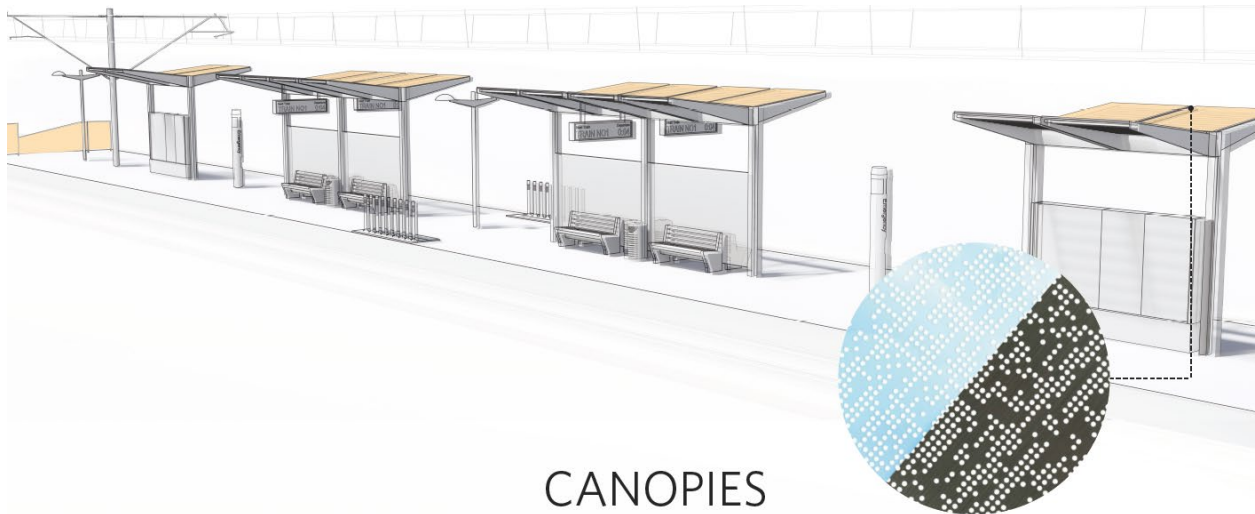
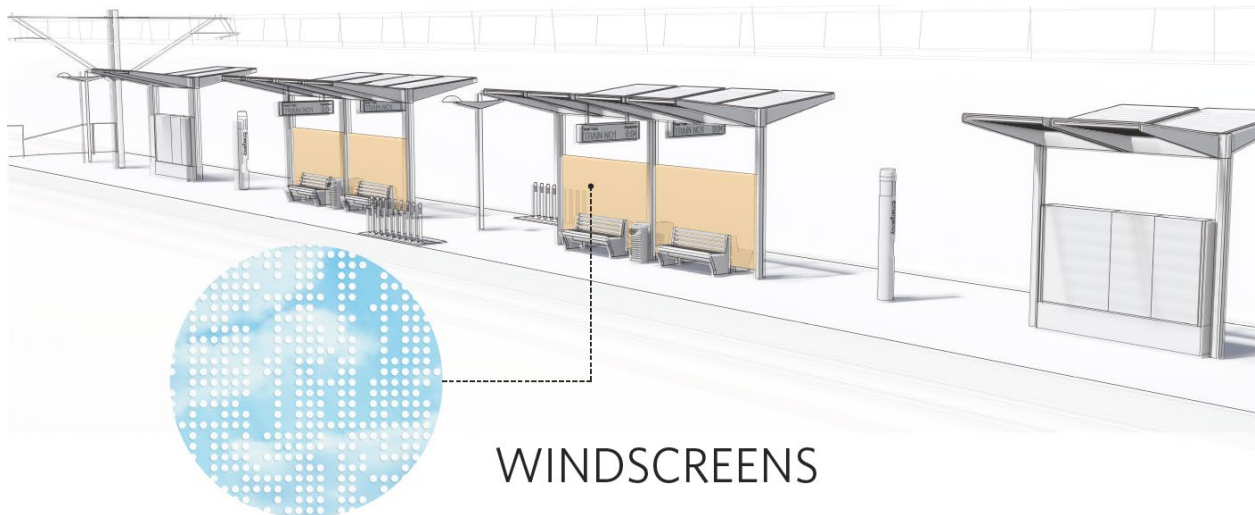
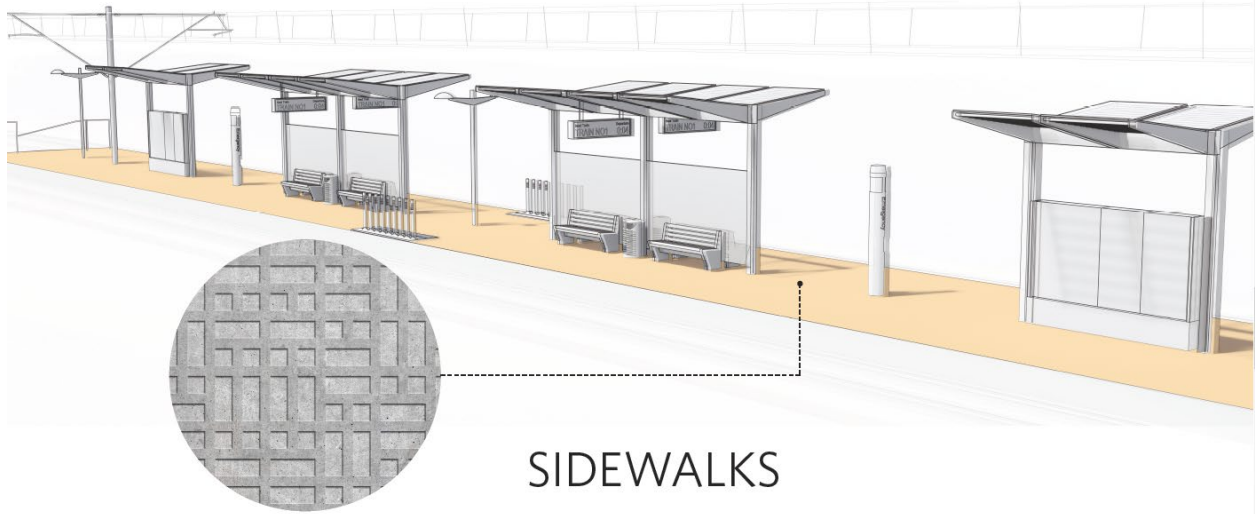
Museum
of life & sci Durham



A ● —	B — ● ● ●	C — — ● ●	D — ● ●
G — — ●	H ● ● ● ●	I ● ●	J ● — — —
M — —	N — ●	O — — — —	P ● — — — ●
S ● ● ●	T —	U ● ● —	V ● ● ● ●

Stamped Concrete

Wind Screen Glass



This page intentionally left blank.

COMMENTS

This page intentionally left blank.

Frances	Collichio		Will it be easy to get our bikes on and off of the train? Will bike hubs like the ones on UNC and NC State Campus be near by? Will there be frequent connections to the train that goes to Raleigh? BTW, it is fantastic!
Matthew	Rascoff		please build faster
Michelle	Jaselskis		Will the project use all three architectural designs or will one design theme be chosen? If one will be used, how will that be decided? Thanks!
Reginald	Terrell		How can I get an application for a job.
Mary	Yeseab		Will there be discount for students, older adults, and veterans? How will parking be accommodated at each stop?
Laura	Ertel		Fantastic job! When fully realized, this will be a fantastic resource we can all be proud of!
David	Cocchetto		Do you plan to choose construction materials (e.g., for windscreens and sidewalks) that can be cleaned (easily and inexpensively) to keep stations free of graffiti? Thank you.
William	Brown		Why doesn't Chapel Hill have move planned stops/stations? And, why doesn't the light rail extend into Carrboro?
Heather	Payne		Your work continues to ignore major issues for neighborhoods inherent in this project. These ideas don't deal with lighting concerns (except to show that they will significantly increase light pollution), does not mandate quiet crossings and other noise mitigation measures, doesn't deal with wildlife issues, doesn't deal with vibration concerns. When are you going to stop ignoring the problems and actually deal with them, rather than spend time putting out pretty pictures that don't indicate reality for those living in close-in, quiet residential neighborhoods which you seem intent on ruining by not committing to full mitigation of these issues? Yet again, this organization and those pushing this project continue to not address the issues raised. Especially for those of us who are part of sensitive populations, these are significant issues. Unless you intend to condemn all our homes using eminent domain when we can no longer live in them due to the light and noise pollution (and crumbling plaster), and have our experiences
Eleanor	Howe		Why isn't the LR line going along 15-501, rather than jogging east when it intersects with I-40? It would serve much more of Orange County/Chapel Hill if it went directly down 15-501. I live near MLK and Weaver Dairy Rd in CH, and I would really like to be able to use the LR to go to Durham! Most of the growth in CH is quite a bit west of the LR line. (I was away during 2017 so wasn't able to keep up with the latest developments. I'm sure there's a "good" reason for the current route, but it's really a disappointment!!)

Debbie	West		THANK YOU for all your work on this - I cannot wait until we have light rail in the area - it's so needed! :)
Jonathan	Haller		More of a suggestion. In order for it to feel like a real rapid transit system it will need to smell like piss on every platform. It would be the authenticity that people really want.....
Kyle	Munn		In the presentation, you make mention that this light rail project will tie into a commuter rail line between Durham and Raleigh. Where can I find more information about this? I have wanted to ride the train from Cary to Durham for my commute for 8 years now but the timing of the Amtrak trains make it impossible to use for an 8-hour work day.
John	Fay		What site was chosen for the maintenance facility (ROMF)?
Drew	Betz		Is the Blackwell/Mangum station committed in the current design? Docs show 18 stations, with this station in a grey color. Thanks!
Brian	Vaughn		Great designs! How can we ensure that the stations are constructed at grade? The failure of many light rail stations in creating a neighborhood character is buildings them on overpasses!
CHRIS	SELBY		Went to April 24 dolr meeting on architecture. Have some ideas to suggest. Where to send email?
Heidi	Perry		I don't see anything about how bike parking will be accommodated. In the Charlotte example, there are only bikeshare docks and a few U racks. People who want to get to the LRT station quickly for their commute may well choose to arrive by bike or e-bike. They will require covered, secure storage for these. This is a detail that often gets put at the end and is underfunded and then ignored. How many such spaces are being considered for each station?
Tonya	Mason		I'm concerned with effects to Finley Golf Course and the forest area around East 54. There is a majestic tree on the 18th hole that I hope will not be cut down. Also, lots of birds/wildlife in area that might be displaced. I know light rail can be a boon to development but this area is already heavily developed - see mostly negatives here. I would appreciate feedback on what will be done to lessen effects on an already good commercial area like East 54 and a heavily played golf course like Finley. Thank
Lucrecia	Milla		Hello, I work for the Thales BD team and we provide signal technology for light rail. I would love a chance to meet some of the stakeholders to discuss what we could provide for Go Triangle. Please let me know if I can meet with anyone on the team. Best, Lucrecia
Cindy	Shea		Will the canopies incorporate photovoltaic (PV) cells to produce electricity for the stations? The canopies could also be used to convey rainwater to cisterns for any onsite irrigation needs.



Mark

Bahner



I'm looking for the place where I can provide my comments on the Durham Orange Light Rail project. Where is that located? Thanks! Mark Bahner bahnermark@gmail.com

Mark

Bahner

Is this the location for public comments on the Durham Orange Light Rail Transit project?

4/25/18

Post-meeting comments about architecture of Durham-Orange Light Rail Stations.

Chris Selby [redacted], Chapel Hill, NC [redacted] (City of Durham)

I went to the light rail meeting on April 24 in Chapel Hill. It was about station architecture.

I spoke with one of the architects. Since both Chapel Hill and Durham (The City of Medicine) are science, technology and medicine oriented, I suggested using supports at the stations that look like pipettes or seats that look like balances. I also suggested having a stethoscope above the ticket machines. I conceded that these ideas may lack staying power but believe just one such idea if it were good would lend a positive distinctiveness and the locals would take ownership.

The architect mentioned that there would be something like a tall post at each station that would be visible from a distance to help folks identify/locate the stations. He mentioned there might be a ball or something on top of each post.

It occurred to me that something more distinctive than a ball could be on top of each post. Back to the medical theme, a big mortar and pestle might work.

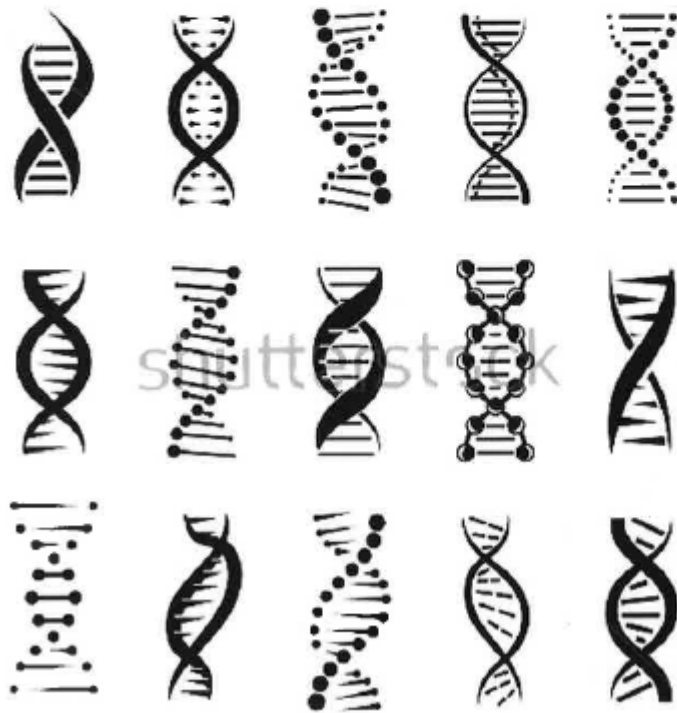
Another option I kind of like would be a pair of dividers aka divider calipers aka compass. It is the instrument with two points you put on a map to measure distance. It is a recognized technological tool used for travel and navigation so it would be appropriate. It could be positioned in a vertical orientation atop a pole and provide added height so as to increase visibility.

Another option would be a segment of the DNA double helix. For that matter, the pole could be in the shape of a double helix although this might be expensive. DNA is central to much of biomedical research, a lot of which is done at UNC and Duke as well as other locations including RTP. In 2015, Aziz Sanchar at UNC and Paul Modrich at Duke shared the Nobel Prize in chemistry for their work on DNA repair mechanisms. The double helix is a recognizable structure, our community is connected to it and I think it would be well received by the community.

atop the post at each station, a repetitive pattern of double helices on the windscreens would in a sense bring things together and make the place more harmonious.

By the way, I also think folks around here would go for solar panels on the shelters.

In summary, something relevant to Chapel Hill-Durham should be located on of the pole at each station, and a small version of the image should be used in a repetitive pattern on the windscreen (with colors and possibly other patterns to soften it) and the roofs of the shelters should have solar panels.



www.shutterstock.com · 656196124



Durham-Orange Light Rail Transit Project



How Do I Submit Comments?

- Written Comments: Complete and submit this form at the open house.
- Electronic Comments: Submit comments by emailing info@ourtransitfuture.com

Comments:

I think the attractiveness of the LRT stations should be enhanced by using the traditional materials shown in the images shown at these design meetings. For example, Downtown Durham is an ~~National~~ historic district, based on the red brick buildings. In addition, the ^{iron/steel} machinery throughout the tobacco factories and warehouses are important.

I would suggest that each station have a small budget, allowing final finishes to reflect natural, indigenous materials, as well as local artwork.

I have visited many transit systems in the US that have done this (while using federal funds), and I was told that working with local groups on these efforts was not very expensive, yet increased community pride in the resulting system. Some also used public-private partnerships and funding, to limit impacts on the construction budget. Was particularly impressed with the quality of finishes/landscaping/artwork on the LRT in Portland, OR, (recent) subways in NYC and other places.

I think ^{providing} quality and local finishes on the largest public works project in Durham's history will be a wise and valuable investment.

Date: 4/24/18

Sincerely,

Name: Richard Hails

Dick Hails, ACP

Street Address: [Redacted]

City, State, Zip: Durham, NC [Redacted]

Phone: [Redacted]

Email: [Redacted]

Contact Preference: Direct Mail Email Do Not Contact



Durham-Orange Light Rail Transit Project



How Do I Submit Comments?

- Written Comments: Complete and submit this form at the open house.
- Electronic Comments: Submit comments by emailing info@ourtransitfuture.com

Comments:

• Looking Good

• For continuity, some repetitive ~~and~~ features of stations are needed, such as the same shape and form of the rain-roofs and wind barriers. This will help people find the station.

• At the same time each station should have unique architectural features hopefully relevant to the station areas. For example Carolina or Duke blue, a city flag near city hall in Durham, the NCCU color, and logos for the Bulls and DPAC. These things if sufficiently visible will help riders remember/easily recognize where to get off.

Date: _____

Name: _____

Street Address: _____

City, State, Zip: _____

Phone: _____

Email: _____

Contact Preference: Direct Mail Email Do Not Contact



Durham-Orange Light Rail Transit Project



How Do I Submit Comments?

- Written Comments: Complete and submit this form at the open house.
- Electronic Comments: Submit comments by emailing info@ourtransitfuture.com

Comments:

Well done event with lots of experts to explain everything satisfactorily.

I think the tentative stop at Blackwell & Mangum should be added. I'd be the first one on it to avoid traffic & parking issues for DPAC and the Ball Park.

Very important stop to change the mind set of older people (like me).

It would be great to take this all the way to the airport.

* If you have another event at extranormal ventures, please put a ^{temporary} visible sign on the street so those coming from Franklin Blvd. can find the building. The sign is only visible if coming from Franklin St.

Date: 4/24/18

Name: Faye Trilling

Street Address:

City, State, Zip:

Phone:

Email:

Contact Preference: Direct Mail Email Do Not Contact



Durham-Orange Light Rail Transit Project



How Do I Submit Comments?

- Written Comments: Complete and submit this form at the open house.
- Electronic Comments: Submit comments by emailing info@ourtransitfuture.com

Comments:

DPAC station is absolutely critical
 Stations/stops close to university athletic
 competition sites are also important
 Connection with Raleigh + RTP transportation
 facilities is critical long-term

Date: 4/24/18
 Name: Richard Trilling
 Street Address: [Redacted]
 City, State, Zip: Durham NC [Redacted]
 Phone: [Redacted]
 Email: _____

Contact Preference: Direct Mail Email Do Not Contact



Durham-Orange Light Rail Transit Project



How Do I Submit Comments?

- Written Comments: Complete and submit this form at the open house.
- Electronic Comments: Submit comments by emailing info@ourtransitfuture.com

Comments:

The designs do not reflect the themes very well, especially the "cultural diversity" theme. Where are the vibrant colors? The 3 universities' colors/logos or traditions? The brick, umbrellas, etc are great, but ~~you~~ the next slide could be about anything!

At the workshop we talked about space to learn about the region - Ex- the geology of the area & natural formations - and space for rotating exhibits - was that lost?

Date: 4/24/2018

Name: Maria T. Palmer

Street Address:

City, State, Zip:

Phone:

Email:

Contact Preference: Direct Mail Email Do Not Contact



Durham-Orange Light Rail Transit Project



How Do I Submit Comments?

- Written Comments: Complete and submit this form at the open house.
- Electronic Comments: Submit comments by emailing info@ourtransitfuture.com

Comments:

The neighbors along Pope Rd
 (between the roundabouts at
 Ephesus church Rd and Old Chapel Hill
 Road) would like to see
 a sidewalk + bike path in
 order to safely access the Gateway
 station.

Date: 24 Apr 2010

Name: Rob Stiefeler

Street Address: [Redacted]

City, State, Zip: Durham NC [Redacted]

Phone: [Redacted]

Email: [Redacted]

Contact Preference: Direct Mail Email Do Not Contact



Durham-Orange Light Rail Transit Project



How Do I Submit Comments?

- Written Comments: Complete and submit this form at the open house.
- Electronic Comments: Submit comments by emailing info@ourtransitfuture.com

Comments:

Very interesting session and I greatly appreciate the chance to view the designs and give input.

Biggest impression: The LRT line is often referred to as the U Line, connecting the universities. That doesn't seem to be represented in the designs. I'm not suggesting there should be rams, devils and eagles in the designs but the importance of education - which isn't just innovation - should be recognized.

Other impressions:

* I loved the cultural diversity images but they seem to represent Durham and not Chapel Hill.

* The William Morris design and the design to its left seem like bizarre choices. I know they won't be used exactly, even choosing them for a GoTriangle display image, makes me quite uneasy.

* the graphic patterns seem surprisingly dull and common, I was hoping for something more unique.

Date: April 26, 2018

Name: Linda Convisor

Street Address: [Redacted]

City, State, Zip: Durham, NC [Redacted]

Phone: [Redacted]

Email: [Redacted]

Contact Preference: Direct Mail Email Do Not Contact



Durham-Orange Light Rail Transit Project



How Do I Submit Comments?

- Written Comments: Complete and submit this form at the open house.
- Electronic Comments: Submit comments by emailing info@ourtransitfuture.com

Comments:

* will the stations represent their particular history and culture or will the designs be continual along the line?

* will the station names be as they are called now?

Thanks for holding this meeting at HRC. Glad to have chance to be here.

Lastly, I don't mean these comments as critical. I'm not a designer and have no idea what the 'right' design would be - but hope these comments are useful.

Jude

Date: _____

Name: _____

Street Address: _____

City, State, Zip: _____

Phone: _____

Email: _____

Contact Preference: Direct Mail Email Do Not Contact



Durham-Orange Light Rail Transit Project



How Do I Submit Comments?

- Written Comments: Complete and submit this form at the open house.
- Electronic Comments: Submit comments by emailing info@ourtransitfuture.com

Comments:

- glad to hear about LEED and Envision certification goals
- would be great to incorporate clean energy into sources to power the trains.
- ~~would~~ incorporating affordable housing nearby both for now and future is important and thinking about long term implications of low density zoning
- electronic fares will be efficient; important though to be sure all people have access to fare payment options - some electronic or fare cards have received critics for phasing out cash and penalizing low-income riders
- incorporate 3 design themes also into the impact of the project: ex. work with local artists for designs, using sustainable materials; using native landscaping
- glad to hear plans for bike friendly options: clear signage
- signage should include clear visuals for speakers of other languages or non-literate people

Date: 4/26/18

Name: kari grace

Street Address:

City, State, Zip: Durham, NC

Phone:

Email:

Contact Preference: Direct Mail Email Do Not Contact



Durham-Orange Light Rail Transit Project



How Do I Submit Comments?

- Written Comments: Complete and submit this form at the open house.
- Electronic Comments: Submit comments by emailing info@ourtransitfuture.com

Comments:

I think this project has the potential to incorporate even more environmental and sustainable features and is an opportunity to show off the triangle's innovation capabilities. Please look into green energy sources as an option as well as sustainable materials. Nice LEED incorporation.

Please ensure that housing remains affordable around transit stations so that people, especially marginalized communities, don't get priced out once the light rail is up and running.

Not a fan of the Natural Heritage designs - for being "naturey" they are a bit of a let down. DNA design would be better suited for Research and Innovation. The Natural History designs could be much more creative given the surrounding inspiration.

Please also consider involving local artisans and youth in the design elements.

Date: 2/1/18

Name: Emmy Grace

Street Address: [Redacted]

City, State, Zip: Durham NC [Redacted]

Phone: [Redacted]

Email: [Redacted]

Contact Preference: Direct Mail Email Do Not Contact

SIGN-IN SHEETS

This page intentionally left blank.

Chapel Hill Sign-Ins

First name	Last name	Email address	Phone number	Mailing street	Mailing city	Mailing state	Mailing zip code
Ray	Lovinggood				Carrboro	NC	
Sue	Hunter				Chapel Hill	NC	
Roby	Swan				Chapel Hill	NC	
Stuart	Tolley				Durham	NC	
Lee	Tobin				Chapel Hill	NC	
Hoi Ning	Ngai				Chapel Hill	NC	
Karen	Harrison				Chapel Hill	NC	
David	Harrison				Chapel Hill	NC	
Emily	Brewer						
Lauralee	Long				Chapel Hill	NC	
Kym	Hunter				Chapel Hill	NC	
Lennart	Strandh				Chapel Hill	NC	
Kim	Dawson				Carrboro	NC	
Ivanna	Anderson				Chapel Hill	NC	
Satyam	Patel				Morrisville	NC	
David	Anderson				Chapel Hill	NC	
Carlos	Lima				Chapel Hill	NC	
Bryan	Kempter				Chapel Hill	NC	
Charles	Berlin				Chapel Hill	NC	
Denice	Sharpe				Durham	NC	
Freddy	DiVallerino				Durham	NC	
Harry	Kuhlman				Chapel Hill	NC	
Byron	Papa				Durham	NC	
Jenna	Shouse				Cary	NC	
Brian	Brown				Raleigh	NC	
Marvin	Brook				Durham	NC	
Debbie	Baker				Durham	NC	
Mark	Haskell				Durham	NC	
Tom	Myrick				Chapel Hill	NC	
Angie	Shatas				Chapel Hill	NC	
Brad	Kosiba				Chapel hill	NC	
Joyce	Loebsack				Durham	NC	
Bill	Kloepfer				Wake Forest	NC	
Matt	Bailey				Chapel Hill	NC	
Kurt	Uphoff				Durham	NC	
JB	Culpepper				Chapel Hill	NC	
Jamaine	Jones				Morrisville	NC	
Faye	Trilling				Durham	NC	
Richard	Hails				Durham	NC	
Preston	Hairgrove				Durham	NC	
Wesley	Hairgrove				Durham	NC	
Levi	Hairgrove				Durham	NC	
Bill	Freeman				Chapel Hill	NC	
Joy	Wood				Chapel Hill	NC	
Danny	Shahar						
Sarah	Broome				Chapel Hill	NC	
Helen	Warner				Durham	NC	
David	Morgan				Durham	NC	
George	Sharp				Durham	NC	
Rob	Stiefvater				Durham	NC	
Molly	Demarco				Chapel Hill	NC	
John	Rees						
Chris	Selby				Chapel Hill	NC	
Ed	Harrison				Durham	NC	
Janet	Schoendorf				Chapel Hill	NC	
Katie	Lord				Chapel Hill	NC	
Jim	Svara				Durham	NC	
David	Peolar				Carrboro	NC	
Tom	Farmer				Chapel Hill	NC	
David	Ballinger				Chapel Hill	NC	
Maria	Palmer				Chapel Hill	NC	
Doug	Short				Chapel Hill	NC	
Paul	Neebe				Chapel Hill	NC	
Perry	Black				Durham	NC	
Jerry	Kyle				Chapel Hill	NC	
Jill	Blackburn				Chapel Hill	NC	
Carol	Uphoff				Chapel Hill	NC	
Marvin	Brooks				Durham	NC	

Durham Sign-Ins

First name	Last name	Email address	Phone number	Mailing street	Mailing city	Mailing State	Mailing zip code
George A.	Long Sr.						
Ruby	Haskins				Durham	NC	
Sheryl	Vazquez				Durham	NC	
Bill	Marriott				Durham	NC	
Lori	Marriott				Durham	NC	
George	Digsby				Durham	NC	
Joyce	Caesar				Durham	NC	
Robert	Campbell				Durham	NC	
Laura	Carathanasis				Cary	NC	
Elizabeth	Wilcox				Durham	NC	
Dan	Jewell				Durham	NC	
John	Tarantino				Raleigh	NC	
Corrie	Piontak				Durham	NC	
Simon	Betsalel				Durham	NC	
Larry	Partee						
Jennifer	Stutzman				Durham	NC	
Mark	Bahner				Durham	NC	
Tonya	Spivey				Durham	NC	
Mars	Gunn						
Annie	Woody				Durham	NC	
Zach	Sunderland				Durham	NC	
Patrick	Bailey				Durham	NC	
Cheryl	Brown				Durham	NC	
Rodney	McKoy				Durham	NC	
C	Stewart						
Kimberly	Lyons				Durham	NC	
Ramona	McGee				Chapel Hill	NC	
Hannah	Hammond				Wake Forest	NC	
Sarah	Hammond						
Adam	Hammond						
Emmy	Grace				Durham	NC	
Kari	Grace				Durham	NC	
Jill	Stanton				Durham	NC	
Wib	Gulley				Durham	NC	
Linda	Convissor				Durham	NC	
Jack	O'Donnell				Durham	NC	
Vivian	Cruz-O'Doherty				Durham	NC	
Martha	Ballard				Durham	NC	
Bryan	Fox				Durham	NC	
Stephen	Appold				Durham	NC	