

ADDITIONAL NOTES:

- NO NEW CONCRETE REQUIRED.
- NO ADDITIONAL IMPERVIOUS AREA.
- MOUNT TO FURNISH A 4' CLEAR ADA ACCESSIBLE PATHWAY.
- INSTALLATION CONTRACTOR TO FURNISH TAMPER PROOF HARDWARE AND TOOL AT SURFACE MOUNTS AND AT THRU-BOLT FASTENERS.

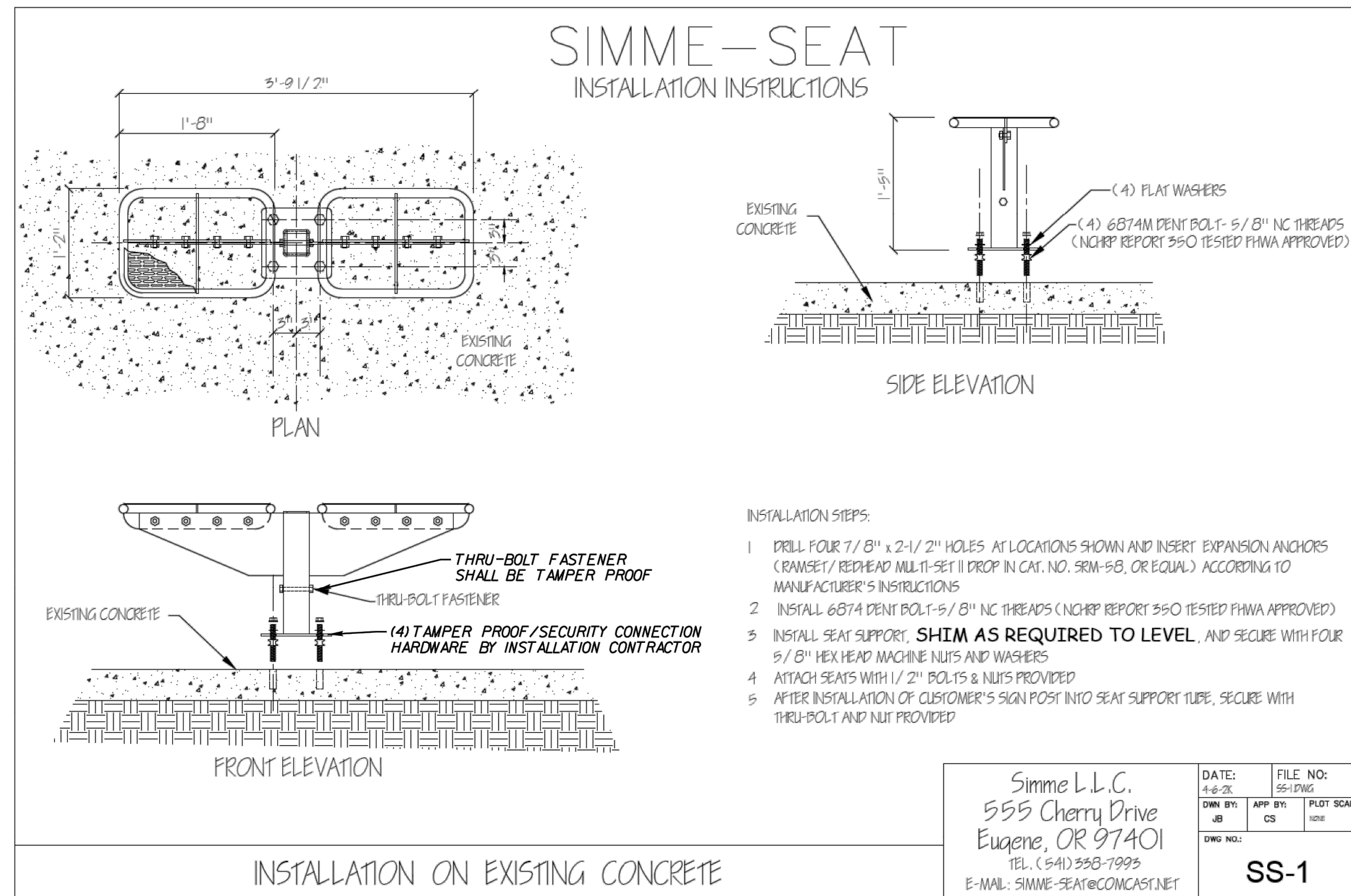
NOTE: WHEN INSTALLED ACCORDING TO THESE INSTRUCTIONS, THIS STRUCTURE WILL WITHSTAND THE WIND SHEAR FORCES CREATED BY MAXIMUM WIND VELOCITIES OF 125 MILES PER HOUR.

SEE DETAIL ON SHEET 4 FOR MORE INFORMATION

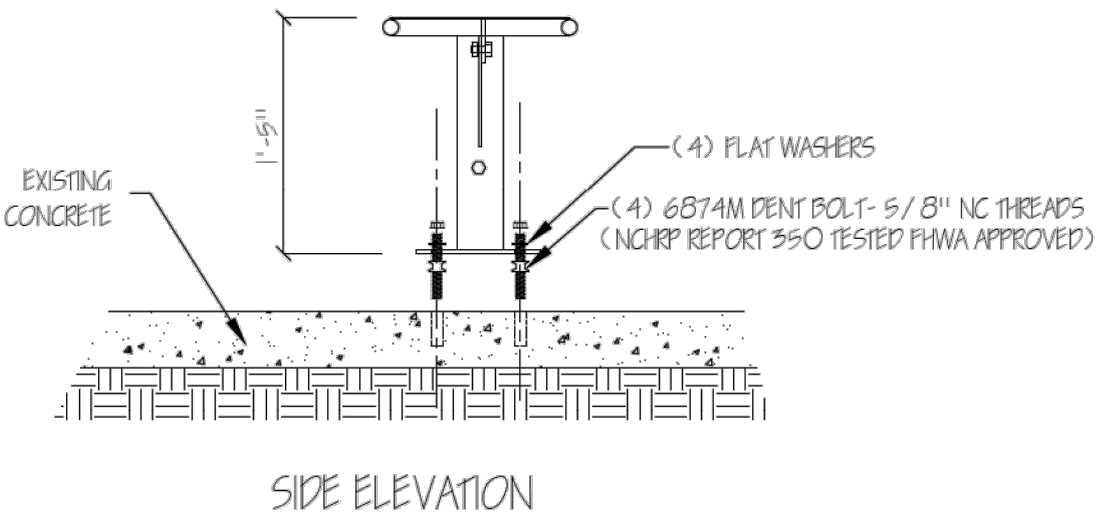
INSTALLATION ON EXISTING CONCRETE EDGE

SIMME L.L.C.
555 CHERRY DRIVE
EUGENE, OR 97401

TEL: (541) 358-7993
E-MAIL: SIMME-SEAT@COMCAST.NET
WWW.SIMMESEAT.COM



SIMME-SEAT INSTALLATION INSTRUCTIONS



- INSTALLATION STEPS:**
- DRILL FOUR 7/8" x 2-1/2" HOLES AT LOCATIONS SHOWN AND INSERT EXPANSION ANCHORS (RAMSET / REDHEAD MULTI-SET II DROP IN CAT. NO. SRM-58, OR EQUAL) ACCORDING TO MANUFACTURER'S INSTRUCTIONS
 - INSTALL 6874 DENT BOLT-5/8" NC THREADS (NCHRP REPORT 350 TESTED PMAA APPROVED)
 - INSTALL SEAT SUPPORT, SHIM AS REQUIRED TO LEVEL, AND SECURE WITH FOUR 5/8" HEX HEAD MACHINE NUTS AND WASHERS
 - ATTACH SEATS WITH 1/2" BOLTS & NUTS PROVIDED
 - AFTER INSTALLATION OF CUSTOMER'S SIGN POST INTO SEAT SUPPORT TUBE, SECURE WITH THRU-BOLT AND NUT PROVIDED

Simme L.L.C.
555 Cherry Drive
Eugene, OR 97401
TEL: (541) 358-7993
E-MAIL: SIMME-SEAT@COMCAST.NET

DATE: 1-4-20
DWG. BY: CS
APP. BY: CS
PLT. SCALE: 1:10
DWG. NO.: SS-1

ENGINEERING	_____	DATE	_____
STORMWATER	_____	DATE	_____
TRANSPORTATION	_____	DATE	_____
WATER MANAGEMENT	_____	DATE	_____
FLOODPLAIN	_____	DATE	_____

City of Durham Approved

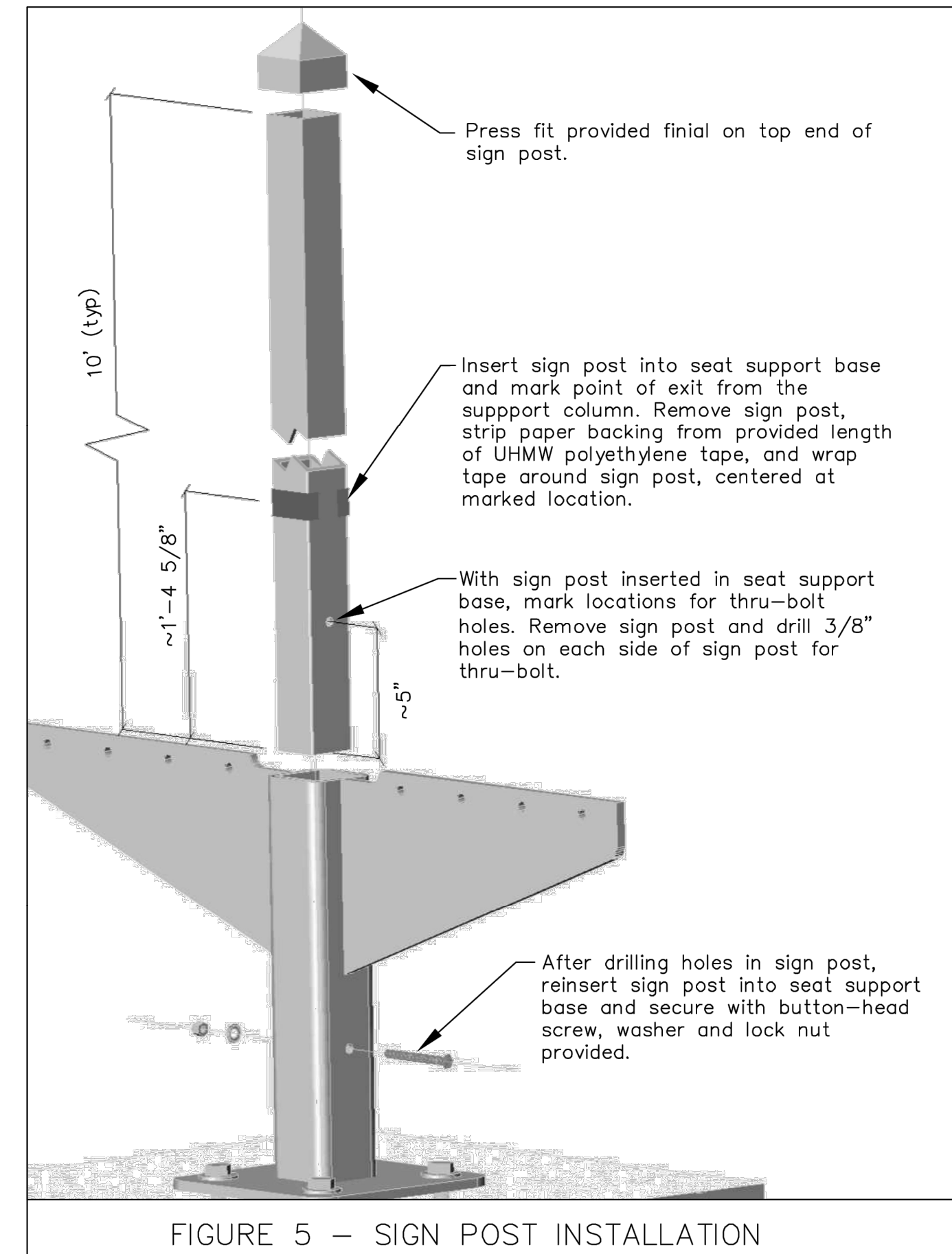
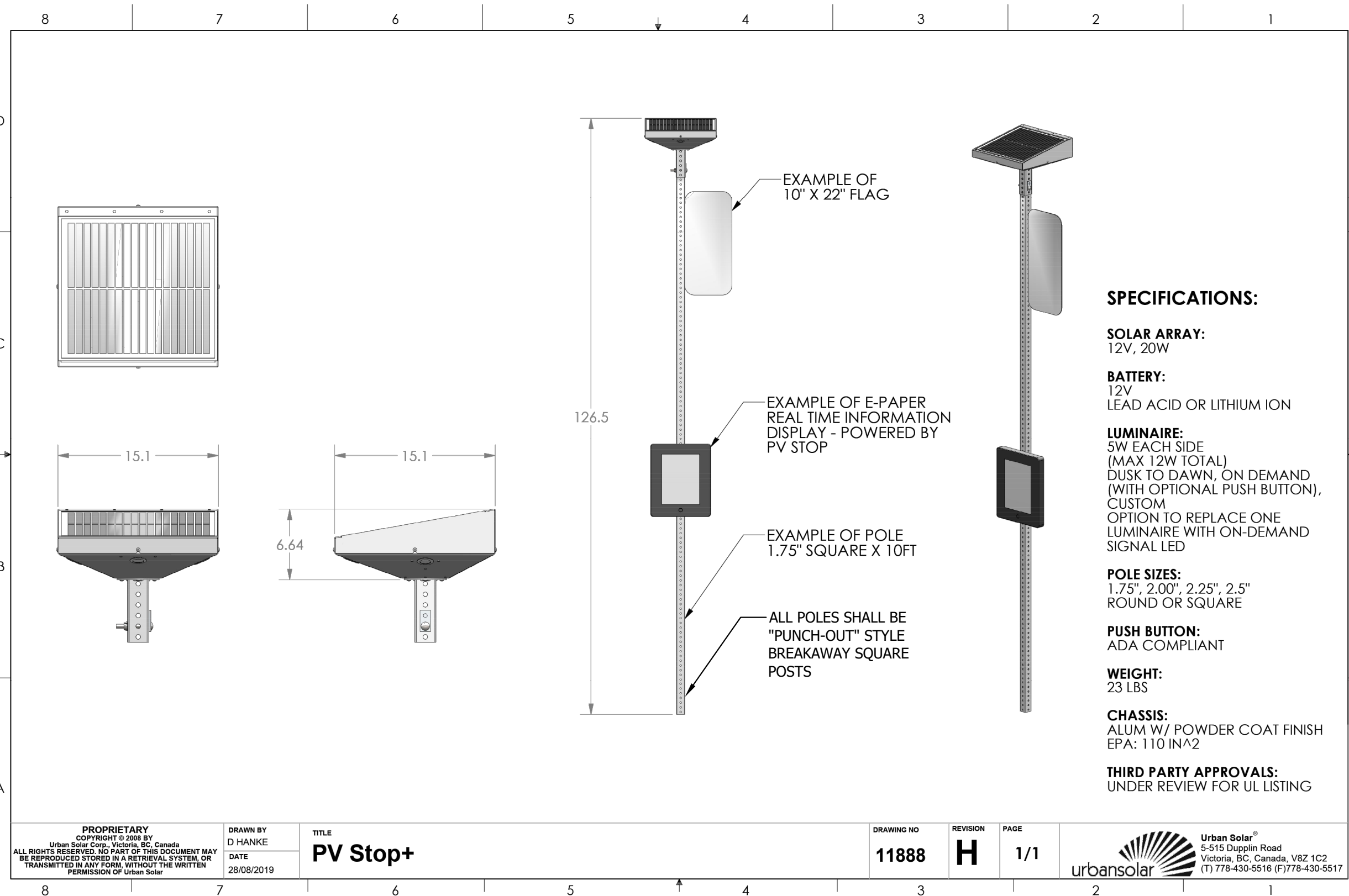


FIGURE 5 - SIGN POST INSTALLATION



SPECIFICATIONS:

SOLAR ARRAY:
12V, 20W

BATTERY:
12V
LEAD ACID OR LITHIUM ION

LUMINAIRE:
5W EACH SIDE (MAX 12W TOTAL)
DUSK TO DAWN, ON DEMAND (WITH OPTIONAL PUSH BUTTON), CUSTOM
OPTION TO REPLACE ONE LUMINAIRE WITH ON-DEMAND SIGNAL LED

POLE SIZES:
1.75", 2.00", 2.25", 2.5"
ROUND OR SQUARE

PUSH BUTTON:
ADA COMPLIANT

WEIGHT:
23 LBS

CHASSIS:
ALUM W/ POWDER COAT FINISH
EPA: 110 IN^2

THIRD PARTY APPROVALS:
UNDER REVIEW FOR UL LISTING

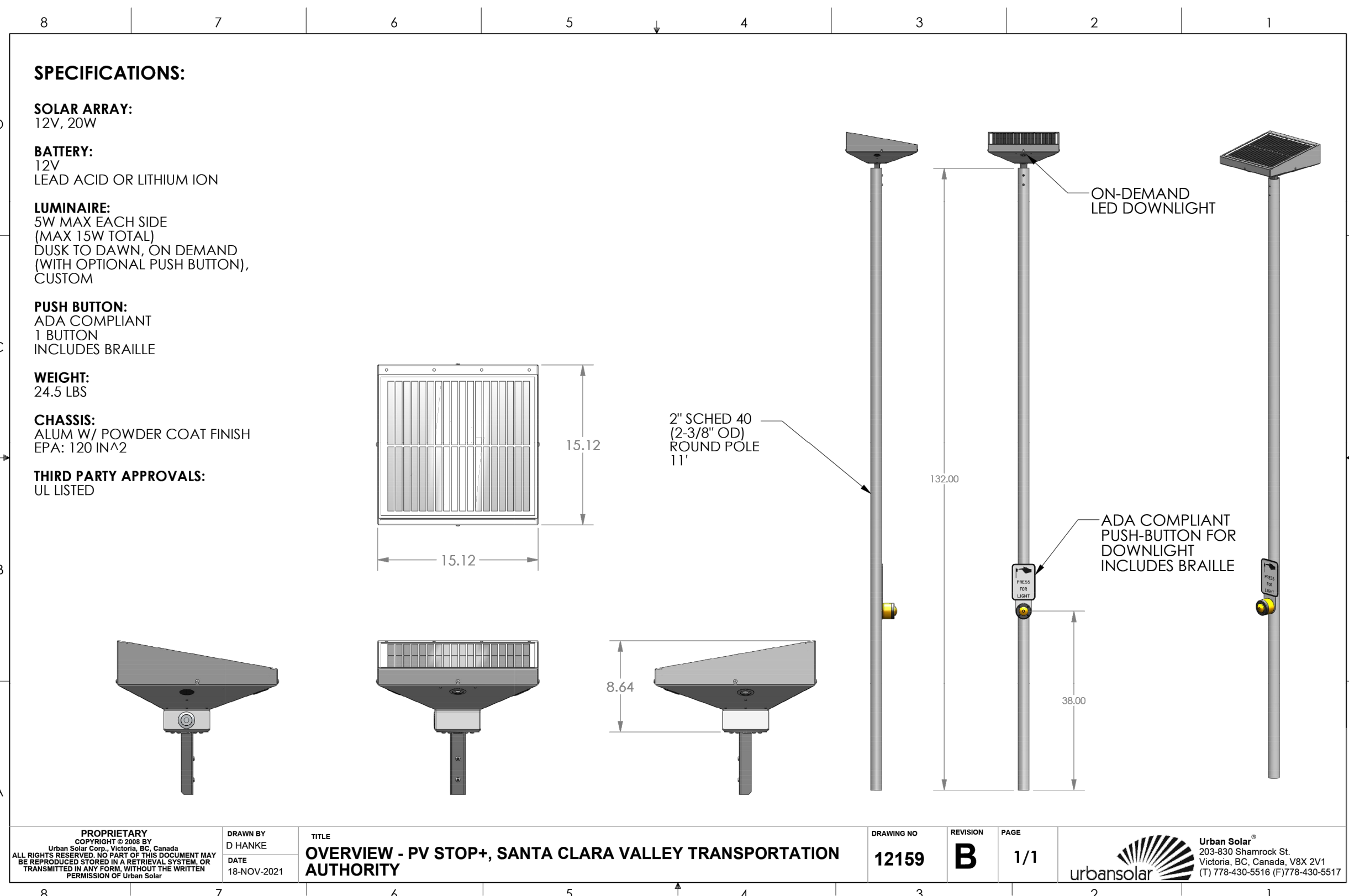
PROPRIETARY
Urban Solar
COPYRIGHT © 2009 BY
Urban Solar, Inc. All rights reserved. No part of this document may be reproduced, stored in a retrieval system, or transmitted in any form, without the written permission of Urban Solar.

DRAWN BY: D HANKE
DATE: 25/09/2019

TITLE: PV Stop+

DRAWING NO: 11888
REVISION: H
PAGE: 1/1

urbansolar
Urban Solar
4515 Dugden Road
Victoria, BC Canada, V8Z 1C2
(1) 778-430-5510 (F) 778-430-5517



SPECIFICATIONS:

SOLAR ARRAY:
12V, 20W

BATTERY:
12V
LEAD ACID OR LITHIUM ION

LUMINAIRE:
5W MAX EACH SIDE (MAX 15W TOTAL)
DUSK TO DAWN, ON DEMAND (WITH OPTIONAL PUSH BUTTON), CUSTOM

PUSH BUTTON:
ADA COMPLIANT
1 BUTTON
INCLUDES BRAILLE

WEIGHT:
24.5 LBS

CHASSIS:
ALUM W/ POWDER COAT FINISH
EPA: 110 IN^2

THIRD PARTY APPROVALS:
UL LISTED

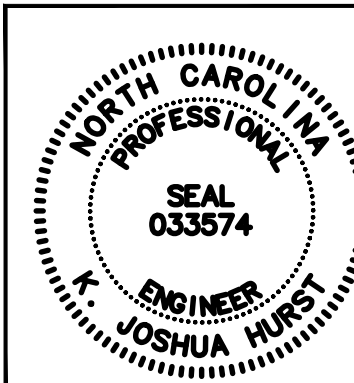
PROPRIETARY
Urban Solar
COPYRIGHT © 2009 BY
Urban Solar, Inc. All rights reserved. No part of this document may be reproduced, stored in a retrieval system, or transmitted in any form, without the written permission of Urban Solar.

DRAWN BY: D HANKE
DATE: 18-NOV-2021

TITLE: OVERVIEW - PV STOP+, SANTA CLARA VALLEY TRANSPORTATION AUTHORITY

DRAWING NO: 12159
REVISION: B
PAGE: 1/1

urbansolar
Urban Solar
4515 Dugden Road
Victoria, BC Canada, V8Z 1C2
(1) 778-430-5510 (F) 778-430-5517



KITTELSON & ASSOCIATES

NC LICENSE #C-4196
702 OBERLIN RD, SUITE 410
RALEIGH, NC 27605
P. 919.926.1291

APP'D	REVISION	DATE	#

Submission Date:
03/04/25

Drawn: CKS
Designed: CKS
Checked: KJH

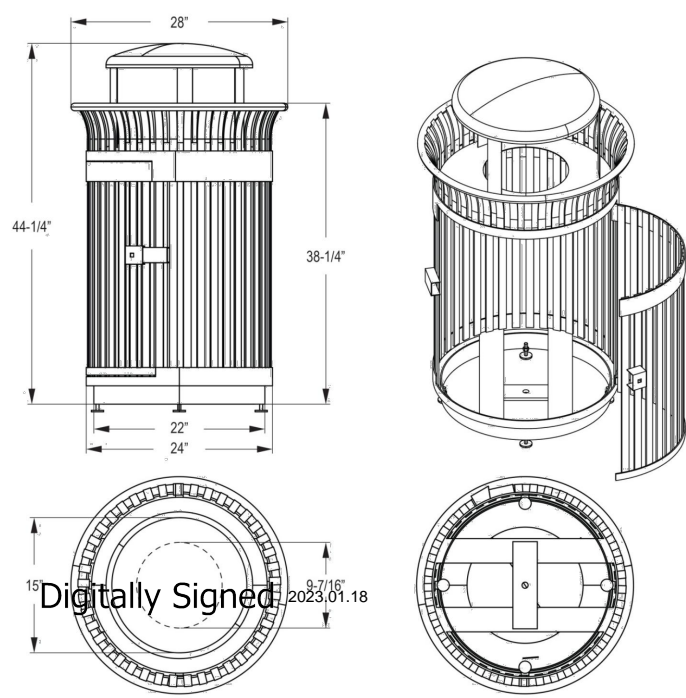
PROJECT NO.
26947

GoTriangle Bus Stop Design
Durham, NC

DETAILS

SHEET NO.
3

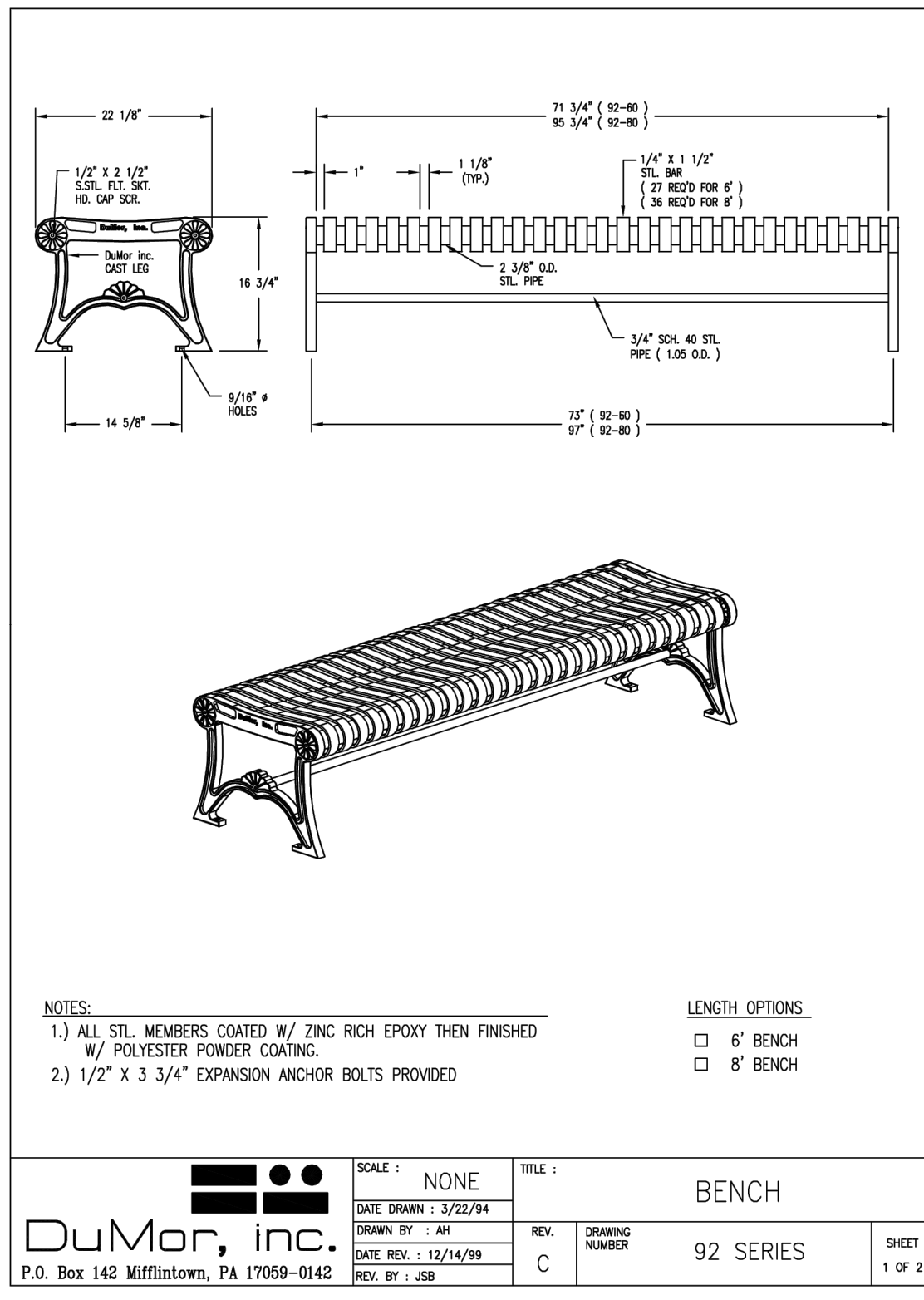
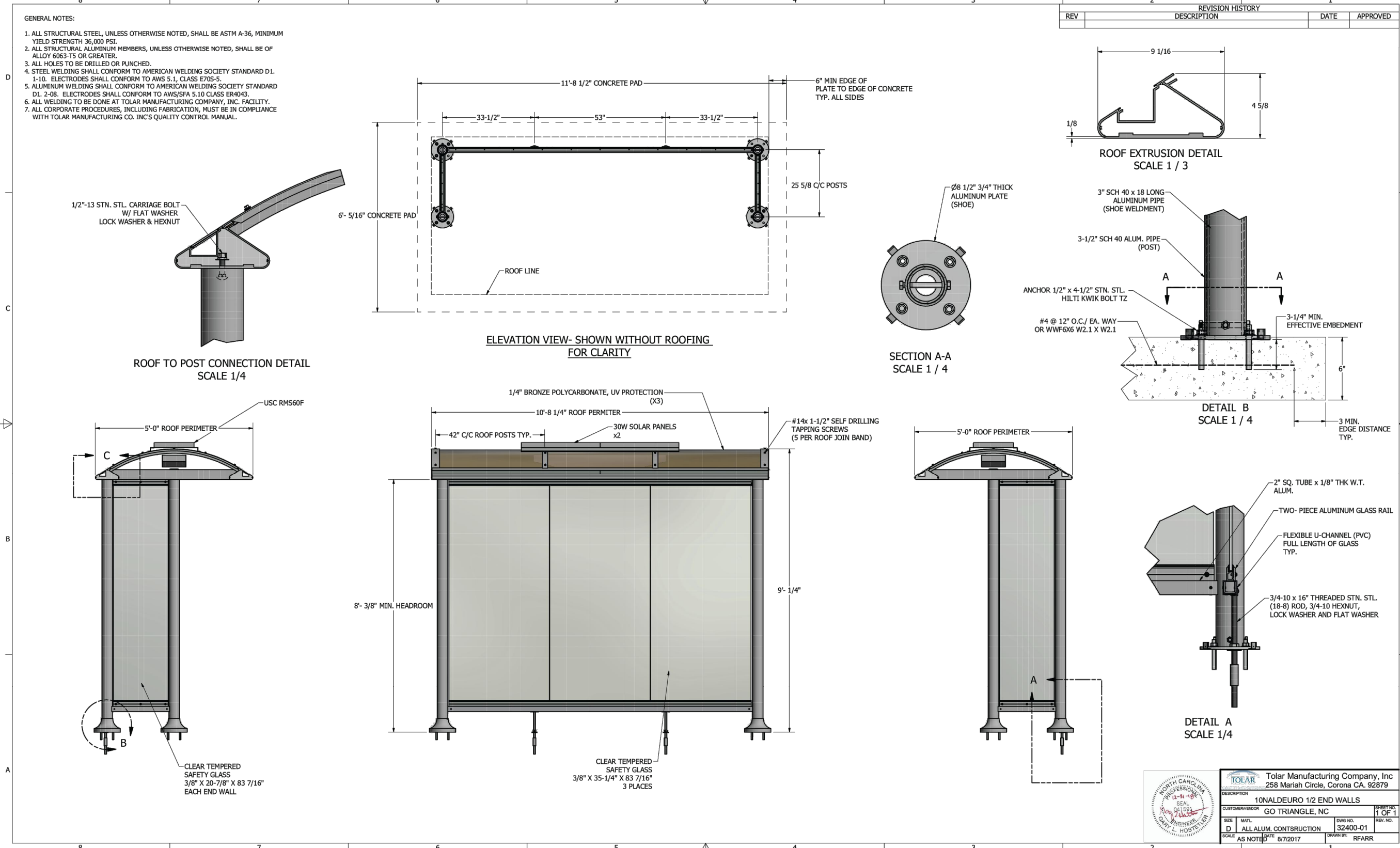
Executive Series Flare Top Trash Receptacle with Door and Bonnet Lid - Black 593-9121



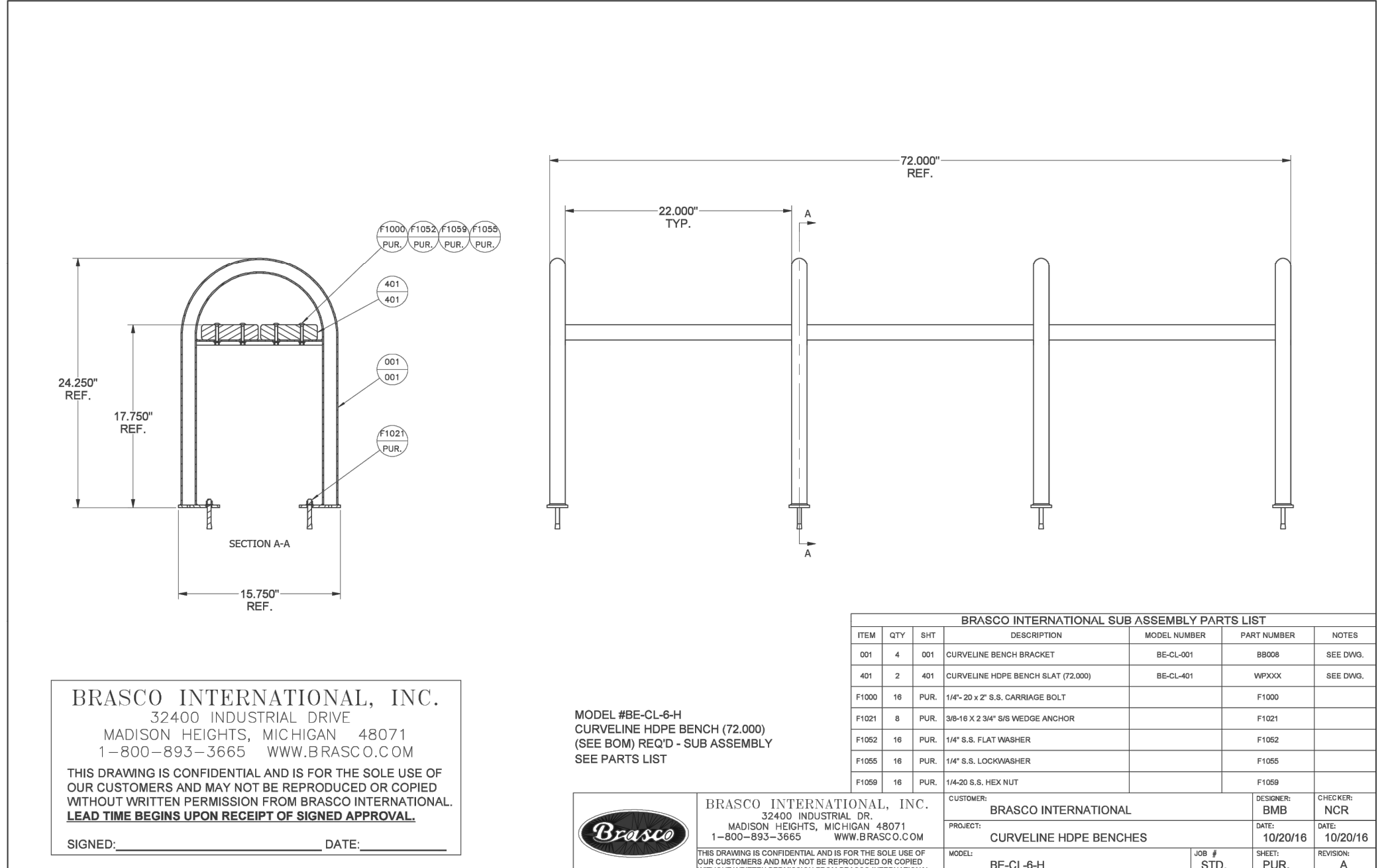
Safety Warnings & Equipment Inspection

- Owners and installers please note these safety warnings and make use of this checklist on a regular basis.
- Follow installation instructions when erecting equipment.
- Ground surfaces around equipment should be restored as needed. Concrete footings should never be exposed. Surface depth should comply with ASTM and CPSC specifications.
- Check for and repair damage caused by wear or vandalism, a major factor in injury causing situations.
- All protruding bolts should be covered or cut off and finished smooth. Sharp edges on pipes should be capped or removed. Check for bent, broken, or severely worn pipe, and replace.
- All equipment should be free of rust and repainted whenever necessary to deter rusting.
- We provide our customers with layout sheets and installation instructions. Please keep on file the specifications sheet that contains the listing of every part used.
- Never add components not intended for use with this product.
- Regular maintenance is necessary in this and all park and recreational equipment to insure the safety of the user.
- Note: Proper maintenance of equipment requires regular tightening of all bolts, nuts, and set screws.
- Note: Regular checking of all parts, castings, etc. should be made. If a part is broken or worn, it should be replaced immediately.
- Check to be sure all fittings are tight and that bars and pipes do not move.
- Replace all worn S-hooks. S-hooks must be completely closed. Failure to close S-hooks can result in serious injury to the user. NEVER reuse S-hooks.
- Test for free movement of swing hanger and other moving attached parts.
- Check for worn chains and replace them.
- A soft resilient surface should be placed under all swings extending at least twice the height of the top rail both front and back.

JH-04272023



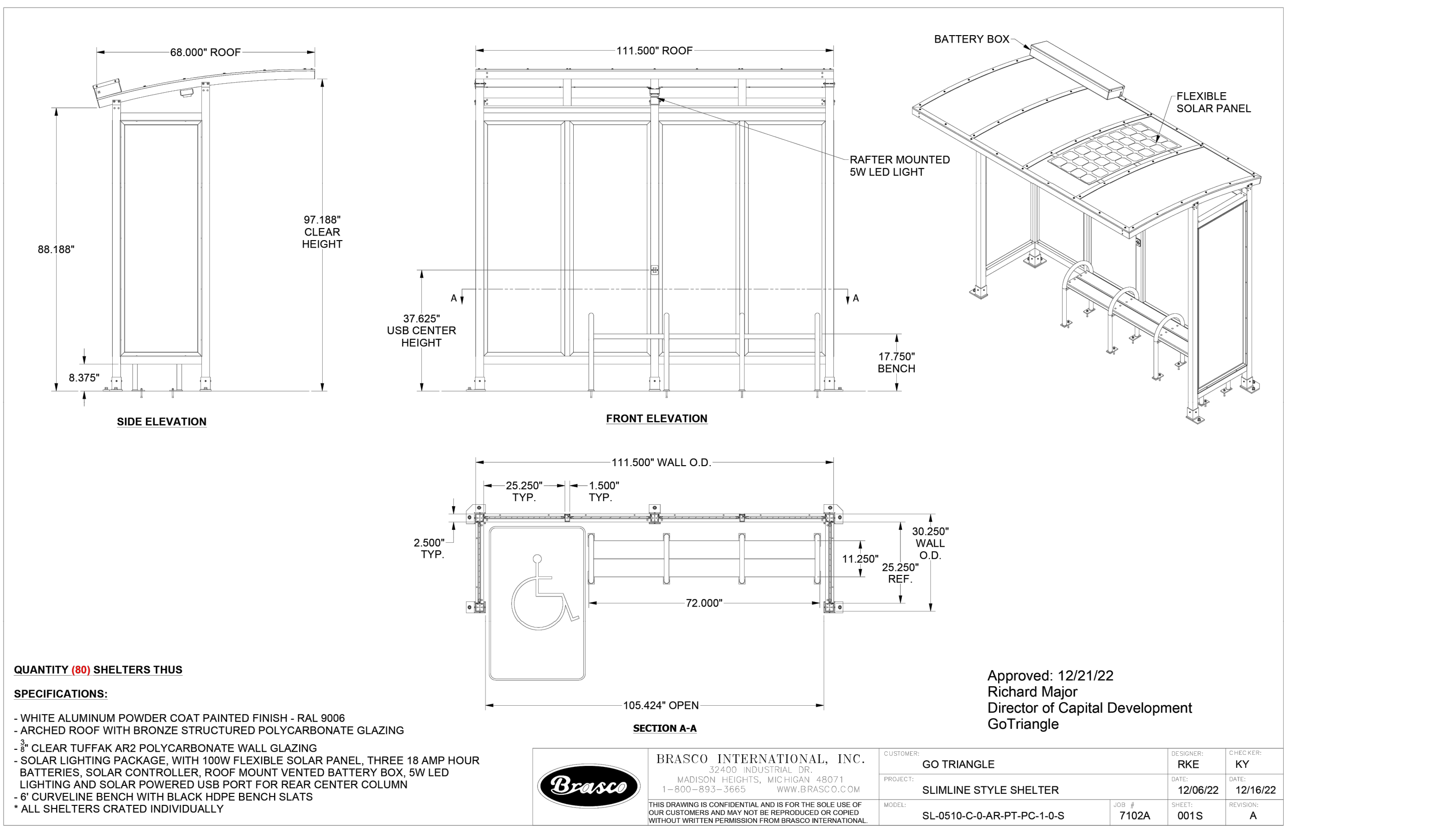
SCALE: NONE TITLE: BENCH
 DATE DRAWN: 3/22/94 REV. DRAWING NUMBER: 92 SERIES SHEET: 1 OF 2
 DRAWN BY: AH REV. DATE: 12/14/99
 DATE REV.: 12/14/99 REV. BY: JSB



BRASCO INTERNATIONAL, INC. 32400 INDUSTRIAL DRIVE MADISON HEIGHTS, MICHIGAN 48071 1-800-893-3665 WWW.BRASCO.COM
 THIS DRAWING IS CONFIDENTIAL AND IS FOR THE SOLE USE OF OUR CUSTOMERS AND MAY NOT BE REPRODUCED OR COPIED WITHOUT WRITTEN PERMISSION FROM BRASCO INTERNATIONAL. LEAD TIME BEGINS UPON RECEIPT OF SIGNED APPROVAL.
 SIGNED: _____ DATE: _____

ITEM	QTY	UNIT	DESCRIPTION	MODEL NUMBER	PART NUMBER	NOTES
001	4	001	CURVILINE BENCH BRACKET	85-CL-001	B8008	SEE DWG.
401	2	401	CURVILINE HOPE BENCH SLAT (72.000)	85-CL-401	W8008	SEE DWG.
F1000	16	PUR	1/4"-20 x 2" S.S. CARRIAGE BOLT		F1000	
F1021	8	PUR	3/8-16 x 2 3/4" S.S. WEDGE ANCHOR		F1021	
F1052	16	PUR	1/4" S.S. FLAT WASHER		F1052	
F1055	16	PUR	1/4" S.S. LOCKWASHER		F1055	
F1059	16	PUR	1/4-20 S.S. HEX NUT		F1059	

GENERAL NOTES:
 1. ALL STRUCTURAL STEEL, UNLESS OTHERWISE NOTED, SHALL BE ASTM A-36, MINIMUM YIELD STRENGTH 36,000 PSI.
 2. ALL STRUCTURAL ALUMINUM MEMBERS, UNLESS OTHERWISE NOTED, SHALL BE OF ALLOY 6063-T5 OR EQUIVALENT.
 3. ALL HOLES TO BE DRILLED OR MACHINED.
 4. STEEL WELDING SHALL CONFORM TO AMERICAN WELDING SOCIETY STANDARD D1.
 5. S.S. ELECTRODES SHALL CONFORM TO AWS A5.1 CLASS E7018.
 6. ALUMINUM WELDING SHALL CONFORM TO AMERICAN WELDING SOCIETY STANDARD D12.9.
 7. S.S. ELECTRODES SHALL CONFORM TO AMERICAN S.S. CLASS ER9018.
 8. ALL WELDING TO BE DONE AT TOLAM MANUFACTURING COMPANY, INC. FACILITY.
 9. ALL CORPORATE PROCEDURES, INCLUDING FABRICATION, MUST BE IN COMPLIANCE WITH TOLAM MANUFACTURING CO. INC.'S QUALITY CONTROL MANUAL.

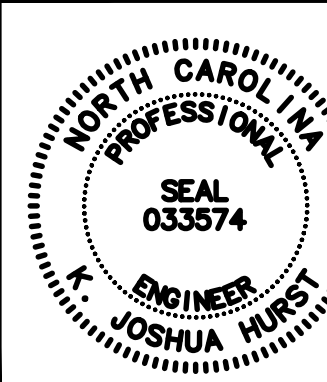


- QUANTITY (80) SHELTERS THUS
 SPECIFICATIONS:
 - WHITE ALUMINUM POWDER COAT PAINTED FINISH - RAL 9006
 - ARCHED ROOF WITH BRONZE STRUCTURED POLYCARBONATE GLAZING
 - 3" CLEAR TUFFAK AR2 POLYCARBONATE WALL GLAZING
 - SOLAR LIGHTING PACKAGE, WITH 100W FLEXIBLE SOLAR PANEL, THREE 18 AMP HOUR BATTERIES, SOLAR CONTROLLER, ROOF MOUNT VENTED BATTERY BOX, 5W LED LIGHTING AND SOLAR POWERED USB PORT FOR REAR CENTER COLUMN
 - 6' CURVILINE BENCH WITH BLACK HOPE BENCH SLATS
 * ALL SHELTERS CRATED INDIVIDUALLY

BRASCO INTERNATIONAL, INC. 32400 INDUSTRIAL DR. MADISON HEIGHTS, MICHIGAN 48071 1-800-893-3665 WWW.BRASCO.COM	CUSTOMER: GO TRIANGLE	DATE: 12/06/22	CHECKED: KY
PROJECT: SLIMLINE STYLE SHELTER	DATE: 12/16/22	DATE: 12/16/22	DATE: 12/16/22
MODEL: SL-0510-C-0-AR-PT-PC-1-0-S	JOB #: 7102A	SHEET: 001S	REVISION: A

Approved: 12/21/22
 Richard Major
 Director of Capital Development
 GoTriangle

City of Durham Approved
 ENGINEERING _____ DATE _____
 STORMWATER _____ DATE _____
 TRANSPORTATION _____ DATE _____
 WATER MANAGEMENT _____ DATE _____
 FLOODPLAIN _____ DATE _____



KITTELSON & ASSOCIATES
 NC LICENSE #C-4196
 702 OBERLIN RD, SUITE 410
 RALEIGH, NC 27605
 P. 919.976.1291

APP'D	REVISION	DATE	#

Submission Date: 03/04/25
 Drawn: CKS
 Designed: CKS
 Checked: KJH
 PROJECT NO. 26947

GoTriangle Bus Stop Design
 Durham, NC
 DETAILS

ISOMETRIC VIEW
PAY LIMITS FOR CURB RAMP

SECTION A-A
SECTION B-B

NOTES:
1. Detectable warning domes will cover 2'-0" length and full width of the ramp where it is flush with the pavement.

CITY OF DURHAM, NC
USE WITH THE STANDARD SPECIFICATIONS ONLY

Dept. of Public Works
101 City Hall Plaza
Durham, NC 27701

Voice (919) 560-4326
www.durhamnc.gov

SCALE: Not to Scale
DETAIL# 405.03
REVISION DATE: 06/2017
SHEET# 2 of 2

SECTION A-A
TRANSVERSE EXPANSION JOINT IN SIDEWALK

SECTION B-B
CONTRACTION (GROOVE) JOINT IN SIDEWALK

NOTES:
1. In addition to complying with Durham standards sidewalks shall conform to NCDOT standards and specifications. In cases where clarifications are needed, the City shall make the determination.
2. Contraction (Groove) joints with 1/8" radius shall be placed at 5 foot intervals and be one inch deep with joint filler.
3. One half inch (1/2") transverse expansion joints shall be placed at intervals no more than 50 feet and shall match expansion/contraction joints in adjacent curb.
4. A sealed 1/2" expansion joint is required where the sidewalk abuts buildings or any rigid structure.
5. Joint materials shall limit shrink/swell so post construction installation results in a maximum of 1/4" from flush.
6. Concrete compressive strength shall be 3,000 psi in 28 days.
7. Top 6" of subgrade beneath the sidewalk shall be compacted to 100% Standard Proctor density. The City may require testing at its discretion.
8. Six inch depth is required at all driveways, intersections (PC to PT), at Handicap ramps, and commercially developed or zoned areas.
9. Undercutting of unsuitable subgrade material and/or placement of up to 6 inches of incidental ABC stone may be required to obtain proper bedding.
10. The minimum width of the verge is one foot; otherwise the sidewalk shall abut the back of the curb and be six feet wide and six inches thick.
11. Lids for junction boxes, structures, or utility vaults shall be non-skid, meet NCDOT standards, and be submitted to the City for review and approval prior to installation.
12. Provide a minimum one foot wide flat area at the back of sidewalks before starting any cut or fill slope.

CITY OF DURHAM, NC
USE WITH THE STANDARD SPECIFICATIONS ONLY

Dept. of Public Works
101 City Hall Plaza
Durham, NC 27701

Voice (919) 560-4326
www.durhamnc.gov

SCALE: Not to Scale
DETAIL# 402.02
REVISION DATE: 06/2017
SHEET# 3 of 3

SIDEWALK abutting CURB / RIGID STRUCTURE

SECTION D-D

NOTES:
1. In addition to complying with Durham standards sidewalks shall conform to NCDOT standards and specifications. In cases where clarifications are needed, the City shall make the determination.
2. Contraction (Groove) joints with 1/8" radius shall be placed at 5 foot intervals and be one inch deep with joint filler.
3. One half inch (1/2") transverse expansion joints shall be placed at intervals no more than 50 feet and shall match expansion/contraction joints in adjacent curb.
4. A sealed 1/2" expansion joint is required where the sidewalk abuts buildings or any rigid structure.
5. Joint materials shall limit shrink/swell so post construction installation results in a maximum of 1/4" from flush.
6. Concrete compressive strength shall be 3,000 psi in 28 days.
7. Top 6" of subgrade beneath the sidewalk shall be compacted to 100% Standard Proctor density. The City may require testing at its discretion.
8. Six inch depth is required at all driveways, intersections (PC to PT), at Handicap ramps, and commercially developed or zoned areas.
9. Undercutting of unsuitable subgrade material and/or placement of up to 6 inches of incidental ABC stone may be required to obtain proper bedding.
10. The minimum width of the verge is one foot; otherwise the sidewalk shall abut the back of the curb and be six feet wide and six inches thick.
11. Lids for junction boxes, structures, or utility vaults shall be non-skid, meet NCDOT standards, and be submitted to the City for review and approval prior to installation.
12. Provide a minimum one foot wide flat area at the back of sidewalks before starting any cut or fill slope.

CITY OF DURHAM, NC
USE WITH THE STANDARD SPECIFICATIONS ONLY

Dept. of Public Works
101 City Hall Plaza
Durham, NC 27701

Voice (919) 560-4326
www.durhamnc.gov

SCALE: Not to Scale
DETAIL# 402.02
REVISION DATE: 06/2023
SHEET# 2 of 3

TYPICAL SIDEWALK with (VERGE) GRASS UTILITY STRIP

SECTION C-C

NOTES:
1. In addition to complying with Durham standards sidewalks shall conform to NCDOT standards and specifications. In cases where clarifications are needed, the City shall make the determination.
2. Contraction (Groove) joints with 1/8" radius shall be placed at 5 foot intervals and be one inch deep with joint filler.
3. One half inch (1/2") transverse expansion joints shall be placed at intervals no more than 50 feet and shall match expansion/contraction joints in adjacent curb.
4. A sealed 1/2" expansion joint is required where the sidewalk abuts buildings or any rigid structure.
5. Joint materials shall limit shrink/swell so post construction installation results in a maximum of 1/4" from flush.
6. Concrete compressive strength shall be 3,000 psi in 28 days.
7. Top 6" of subgrade beneath the sidewalk shall be compacted to 100% Standard Proctor density. The City may require testing at its discretion.
8. Six inch depth is required at all driveways, intersections (PC to PT), at Handicap ramps, and commercially developed or zoned areas.
9. Undercutting of unsuitable subgrade material and/or placement of up to 6 inches of incidental ABC stone may be required to obtain proper bedding.
10. The minimum width of the verge is one foot; otherwise the sidewalk shall abut the back of the curb and be six feet wide and six inches thick.
11. Lids for junction boxes, structures, or utility vaults shall be non-skid, meet NCDOT standards, and be submitted to the City for review and approval prior to installation.
12. Provide a minimum one foot wide flat area at the back of sidewalks before starting any cut or fill slope.

CITY OF DURHAM, NC
USE WITH THE STANDARD SPECIFICATIONS ONLY

Dept. of Public Works
101 City Hall Plaza
Durham, NC 27701

Voice (919) 560-4326
www.durhamnc.gov

SCALE: Not to Scale
DETAIL# 402.02
REVISION DATE: 06/2017
SHEET# 1 of 3

ISOMETRIC VIEW
PAY LIMITS FOR CURB RAMP

SECTION A-A
SECTION B-B

NOTES:
1. Detectable warning domes will cover 2'-0" length and full width of the ramp where it is flush with the pavement.

CITY OF DURHAM, NC
USE WITH THE STANDARD SPECIFICATIONS ONLY

Dept. of Public Works
101 City Hall Plaza
Durham, NC 27701

Voice (919) 560-4326
www.durhamnc.gov

SCALE: Not to Scale
DETAIL# 405.03
REVISION DATE: 06/2017
SHEET# 1 of 2

4' COMPACTED ABC UNDER ALL CURB + GUTTER

TRANSVERSE EXPANSION JOINT IN CURB AND GUTTER

NOTES:
1. Use non-reinforced, air entrained, concrete with a minimum strength of 3000 lbs.
2. Contraction joints shall be placed at 10' intervals.
3. Contraction joints may be installed by the use of templates or formed by other approved methods. Where such joints are not formed by templates, a minimum depth of 1 1/2" shall be obtained.
4. All construction joints shall be filled with joint filler and hot applied joint sealer. See NCDOT specifications.
5. Expansion joints shall be spaced at 90' intervals, and adjacent to all rigid objects.

CITY OF DURHAM, NC
USE WITH THE STANDARD SPECIFICATIONS ONLY

Dept. of Public Works
101 City Hall Plaza
Durham, NC 27701

Voice (919) 560-4326
www.durhamnc.gov

SCALE: Not to Scale
DETAIL# 402.01
REVISION DATE: 06/2017
SHEET# 2 of 2

18" MOUNTABLE CURB + GUTTER
30" CURB + GUTTER
30" ROLLED CURB + GUTTER
24" CURB + GUTTER
30" VALLEY GUTTER
24" SHOULDER CURB
36" OR 48" VALLEY GUTTER

NOTES:
1. In addition to complying with Durham standards sidewalks shall conform to NCDOT standards and specifications. In cases where clarifications are needed, the City shall make the determination.
2. Contraction (Groove) joints with 1/8" radius shall be placed at 5 foot intervals and be one inch deep with joint filler.
3. One half inch (1/2") transverse expansion joints shall be placed at intervals no more than 50 feet and shall match expansion/contraction joints in adjacent curb.
4. A sealed 1/2" expansion joint is required where the sidewalk abuts buildings or any rigid structure.
5. Joint materials shall limit shrink/swell so post construction installation results in a maximum of 1/4" from flush.
6. Concrete compressive strength shall be 3,000 psi in 28 days.
7. Top 6" of subgrade beneath the sidewalk shall be compacted to 100% Standard Proctor density. The City may require testing at its discretion.
8. Six inch depth is required at all driveways, intersections (PC to PT), at Handicap ramps, and commercially developed or zoned areas.
9. Undercutting of unsuitable subgrade material and/or placement of up to 6 inches of incidental ABC stone may be required to obtain proper bedding.
10. The minimum width of the verge is one foot; otherwise the sidewalk shall abut the back of the curb and be six feet wide and six inches thick.
11. Lids for junction boxes, structures, or utility vaults shall be non-skid, meet NCDOT standards, and be submitted to the City for review and approval prior to installation.
12. Provide a minimum one foot wide flat area at the back of sidewalks before starting any cut or fill slope.

CITY OF DURHAM, NC
USE WITH THE STANDARD SPECIFICATIONS ONLY

Dept. of Public Works
101 City Hall Plaza
Durham, NC 27701

Voice (919) 560-4326
www.durhamnc.gov

SCALE: Not to Scale
DETAIL# 402.01
REVISION DATE: 06/2023
SHEET# 1 of 2

PREFABRICATED MODULAR GRAVITY WALL

NOTES:
1. In addition to complying with Durham standards sidewalks shall conform to NCDOT standards and specifications. In cases where clarifications are needed, the City shall make the determination.
2. Contraction (Groove) joints with 1/8" radius shall be placed at 5 foot intervals and be one inch deep with joint filler.
3. One half inch (1/2") transverse expansion joints shall be placed at intervals no more than 50 feet and shall match expansion/contraction joints in adjacent curb.
4. A sealed 1/2" expansion joint is required where the sidewalk abuts buildings or any rigid structure.
5. Joint materials shall limit shrink/swell so post construction installation results in a maximum of 1/4" from flush.
6. Concrete compressive strength shall be 3,000 psi in 28 days.
7. Top 6" of subgrade beneath the sidewalk shall be compacted to 100% Standard Proctor density. The City may require testing at its discretion.
8. Six inch depth is required at all driveways, intersections (PC to PT), at Handicap ramps, and commercially developed or zoned areas.
9. Undercutting of unsuitable subgrade material and/or placement of up to 6 inches of incidental ABC stone may be required to obtain proper bedding.
10. The minimum width of the verge is one foot; otherwise the sidewalk shall abut the back of the curb and be six feet wide and six inches thick.
11. Lids for junction boxes, structures, or utility vaults shall be non-skid, meet NCDOT standards, and be submitted to the City for review and approval prior to installation.
12. Provide a minimum one foot wide flat area at the back of sidewalks before starting any cut or fill slope.

CITY OF DURHAM, NC
USE WITH THE STANDARD SPECIFICATIONS ONLY

Dept. of Public Works
101 City Hall Plaza
Durham, NC 27701

Voice (919) 560-4326
www.durhamnc.gov

SCALE: Not to Scale
DETAIL# 402.01
REVISION DATE: 06/2023
SHEET# 1 of 2

Triangle
Durham

GO

KITTELSON & ASSOCIATES

NC LICENSE #C-4196
702 OBERLIN RD, SUITE 410
RALEIGH, NC 27605
P. 919.926.1291

APPROVED

REVISION

DATE

Submission Date: 03/04/25

Drawn: CKS
Designed: CKS
Checked: KJH

PROJECT NO. 26947

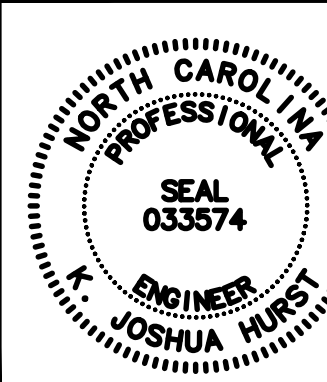
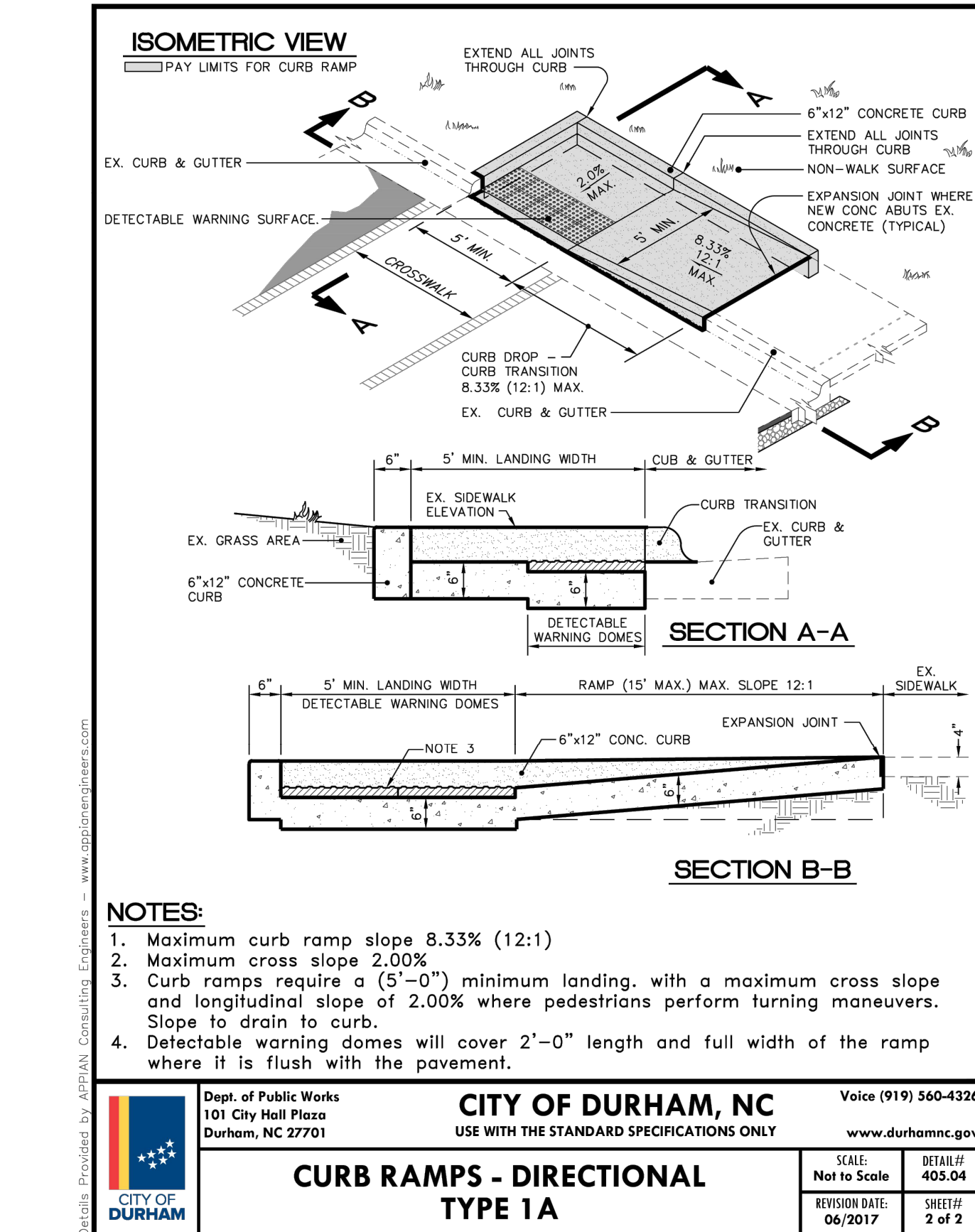
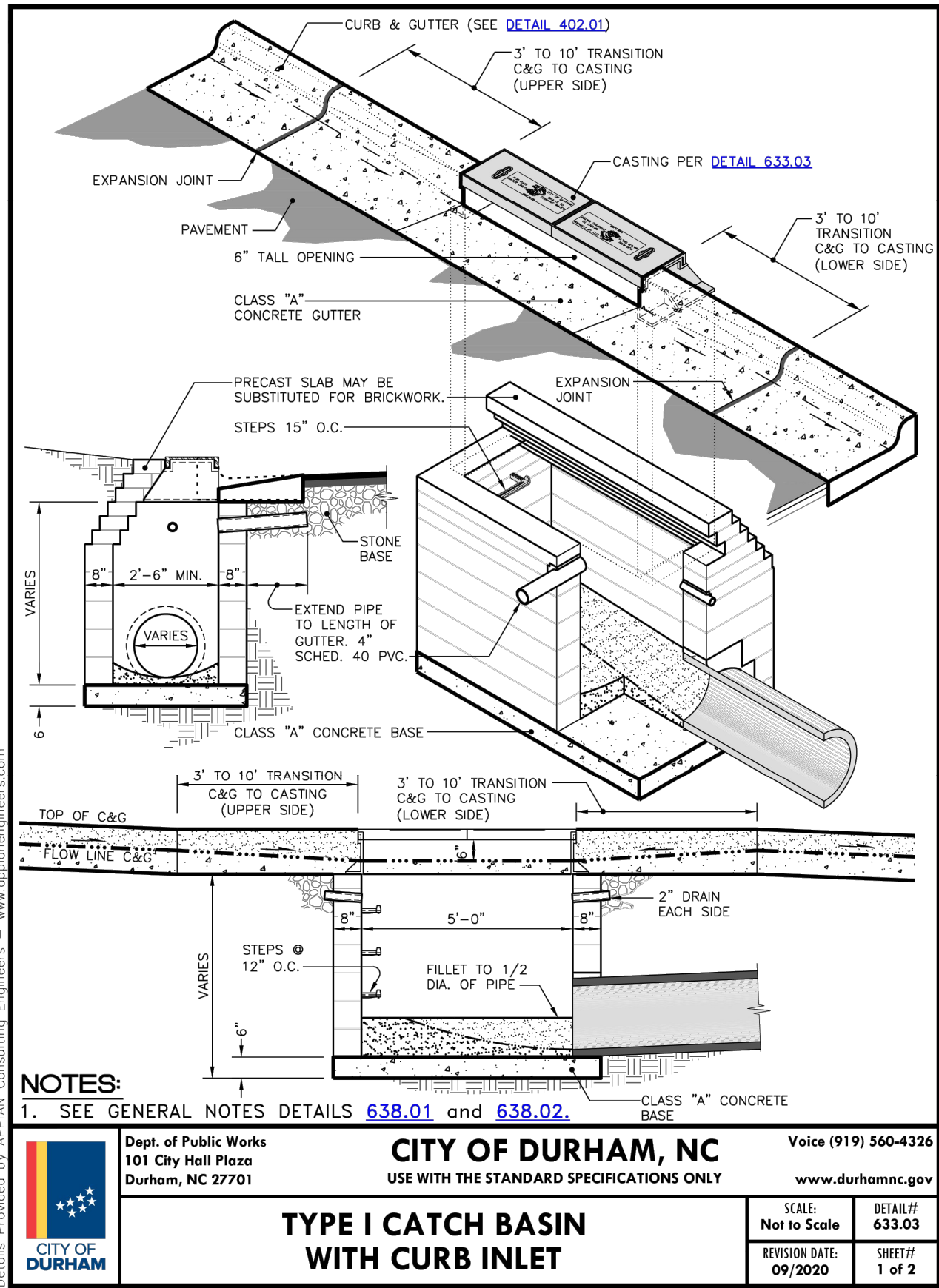
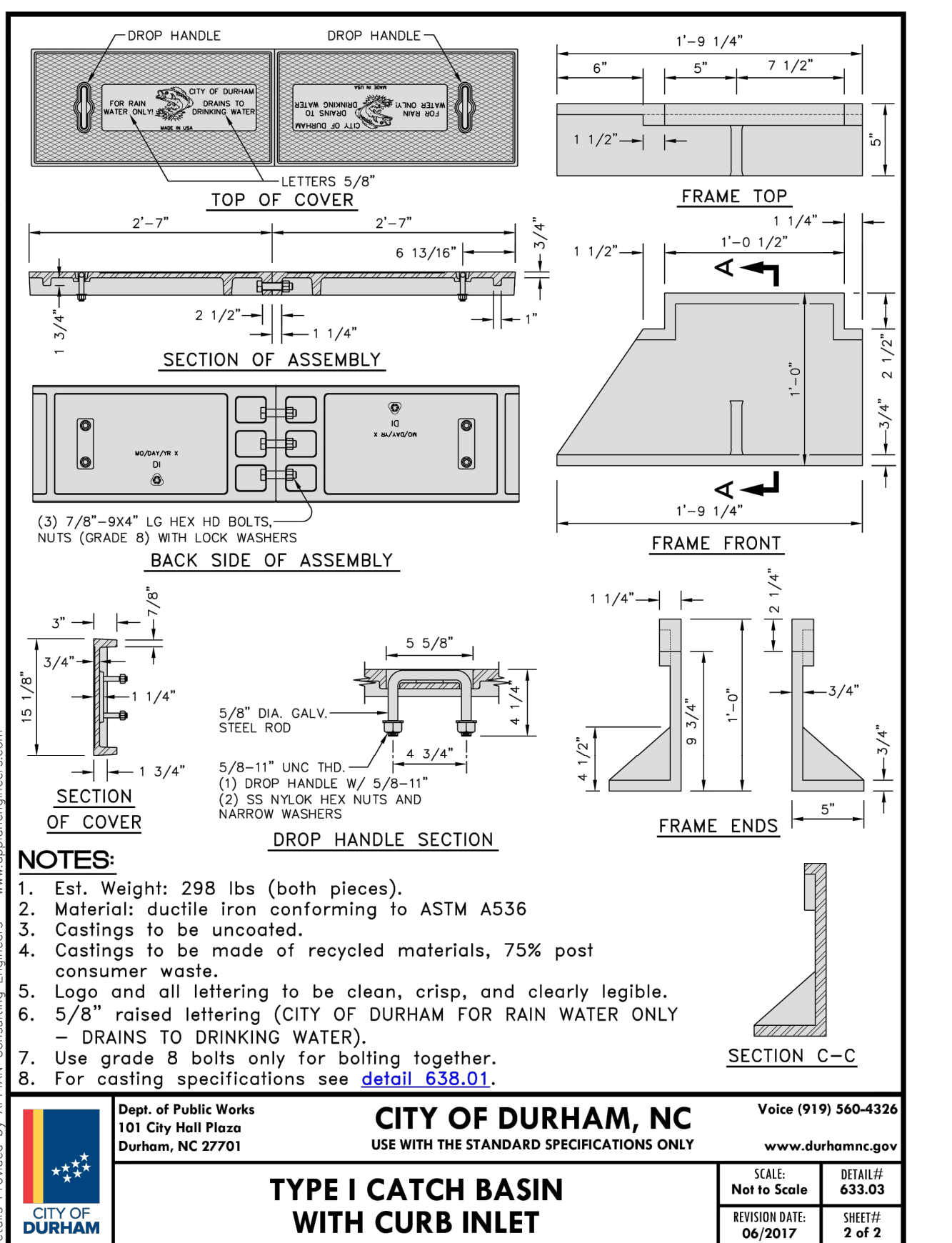
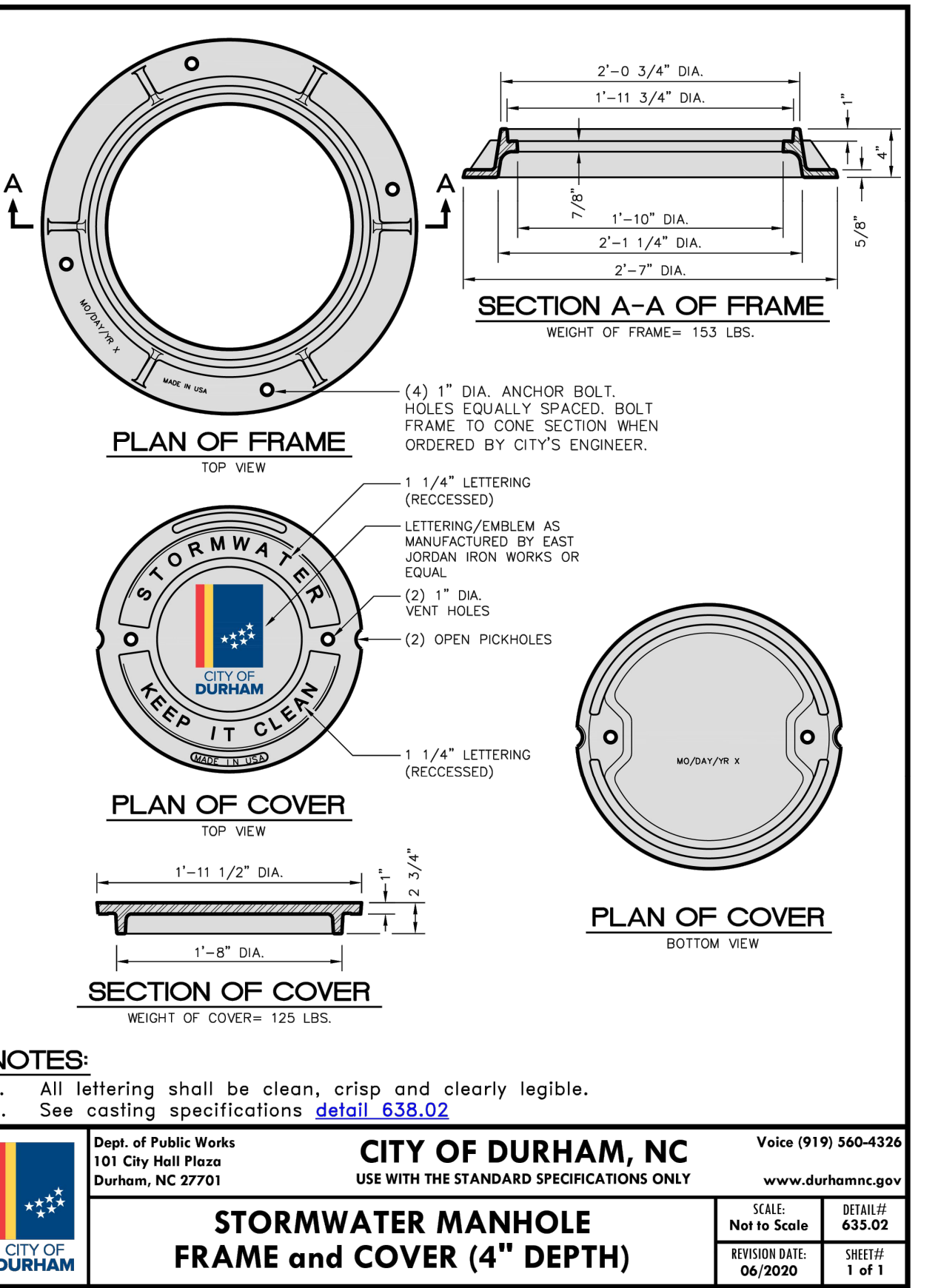
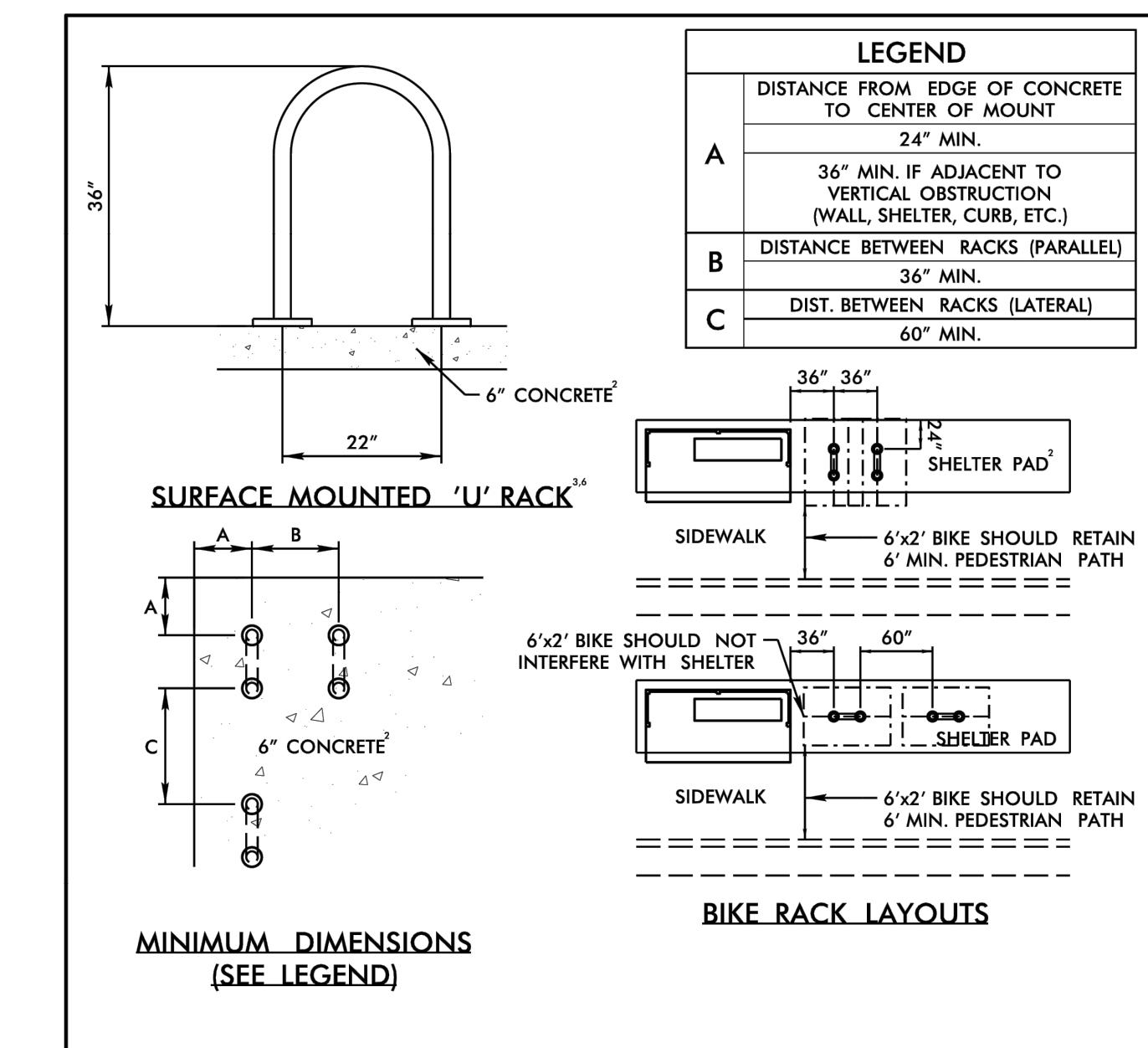
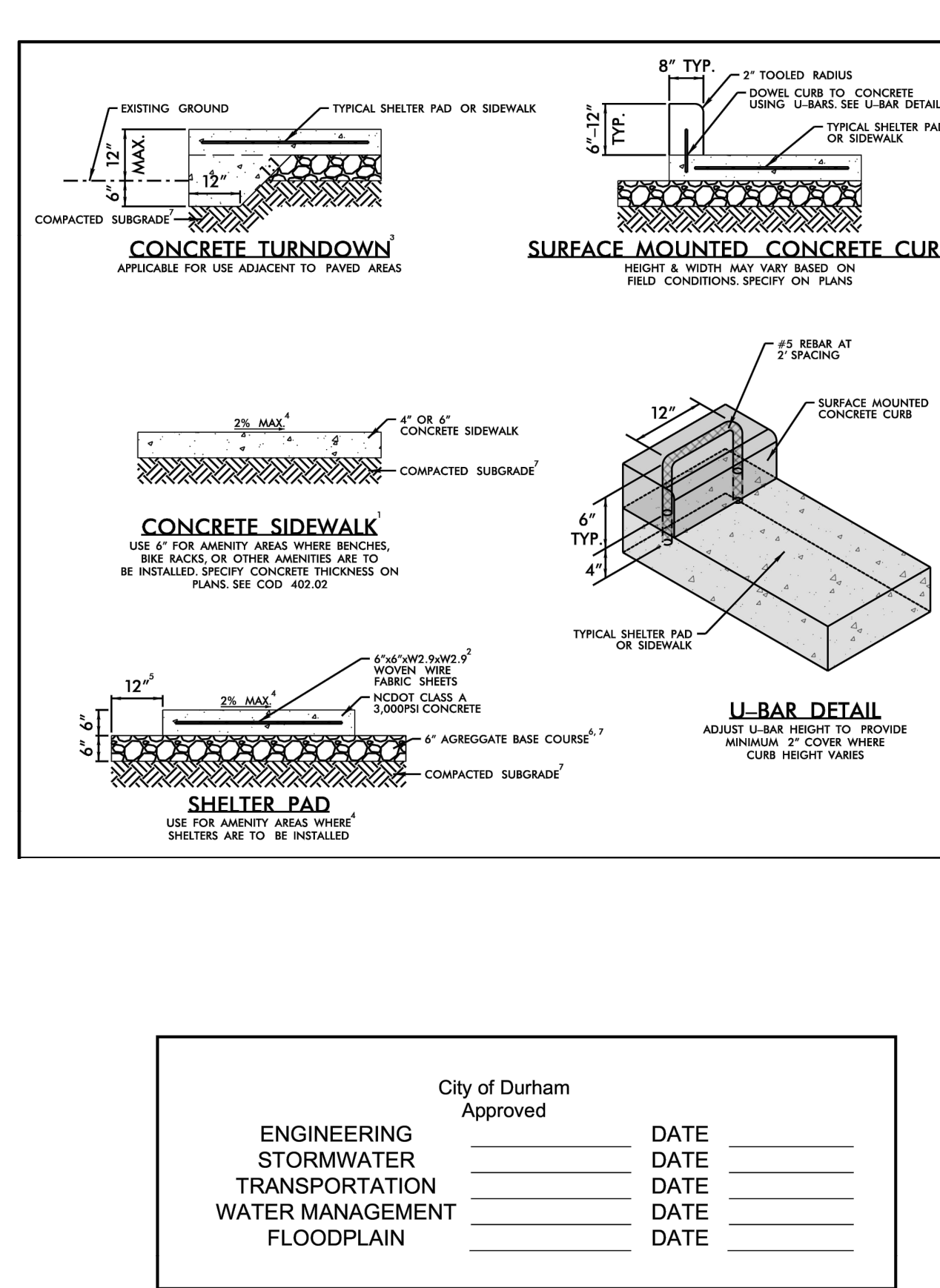
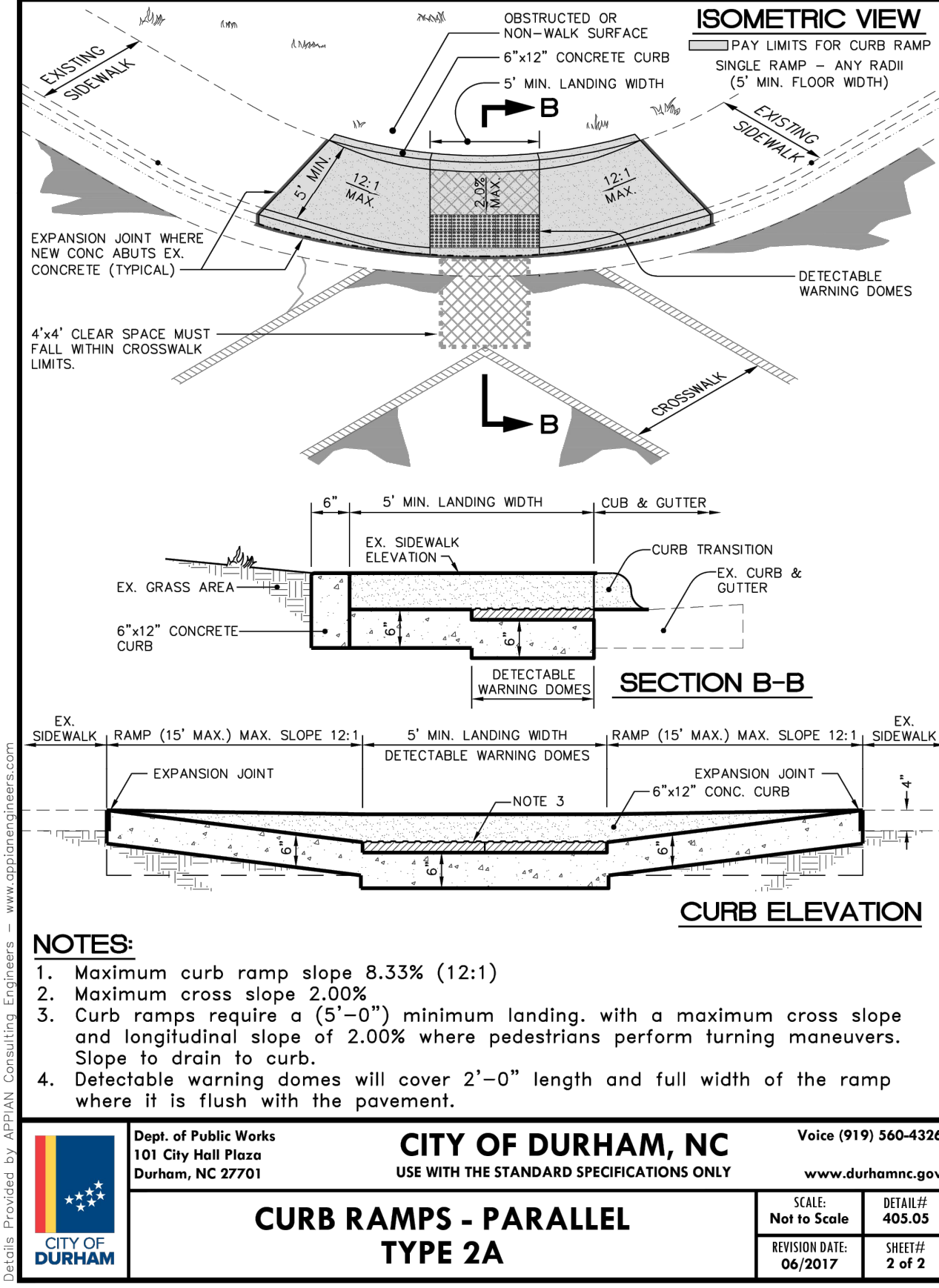
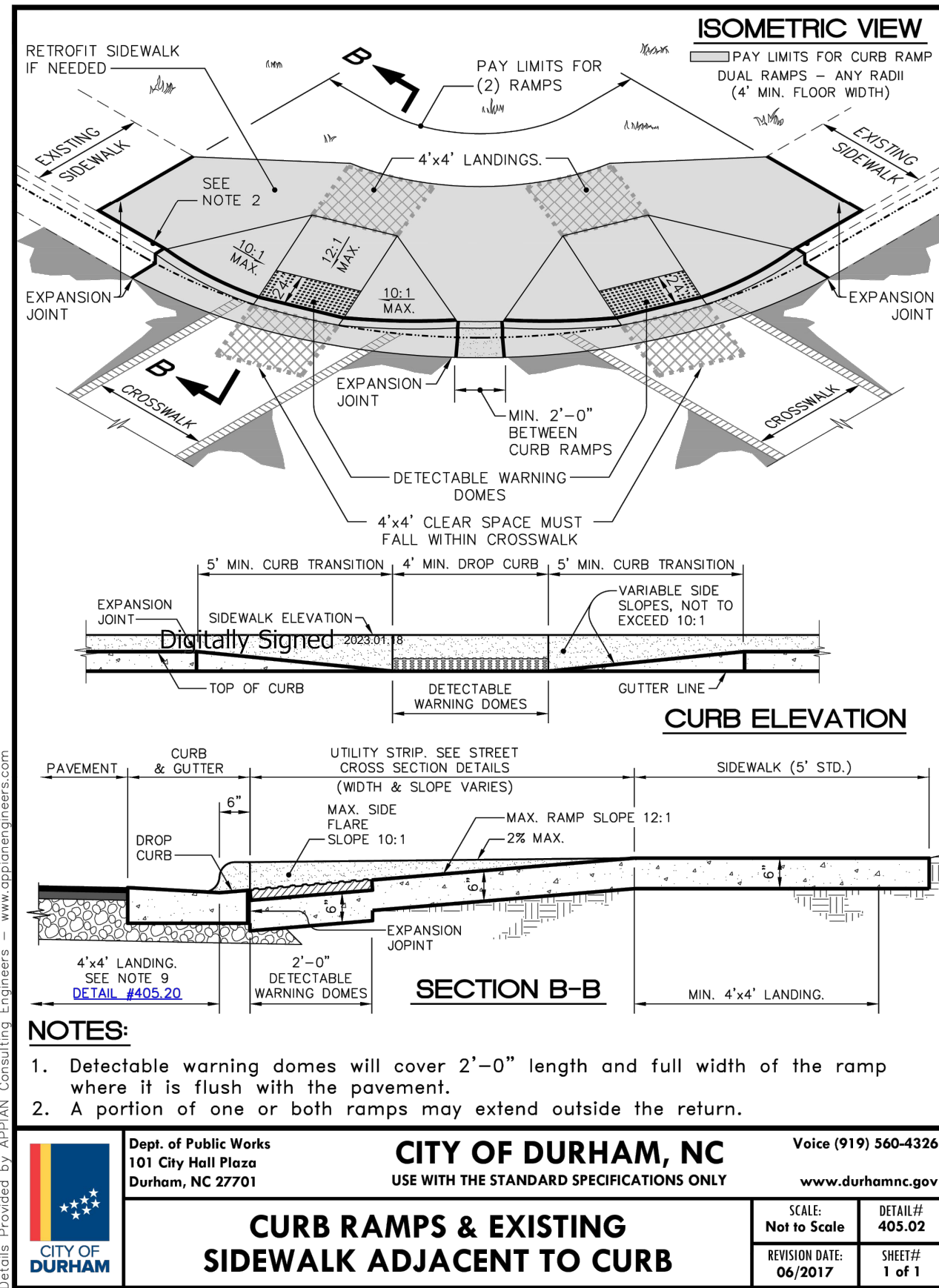
GoTriangle Bus Stop Design
Durham, NC

DETAILS

SHEET NO. 5

SEAL 033574
ENGINEER
JOSHUA HURST

Plot Stamp: 3/13/2026 4:53:41 PM - Caroline Smith
File: H:\26\26947 - GoTriangle Planning and Design On-Call\001 - Durham Bus Stop Site Design\design_CD\CD_General Sheets B-5.dwg



Triangle
Durham

GO **GO**

KITTELSON & ASSOCIATES
NC LICENSE #C-4196
702 OBERLIN RD, SUITE 410
RALEIGH, NC 27605
P. 919.926.1291

NO.	REVISION	DATE	BY

Submission Date: 03/04/25
Drawn: CKS
Designed: CKS
Checked: KJH

PROJECT NO. 26947

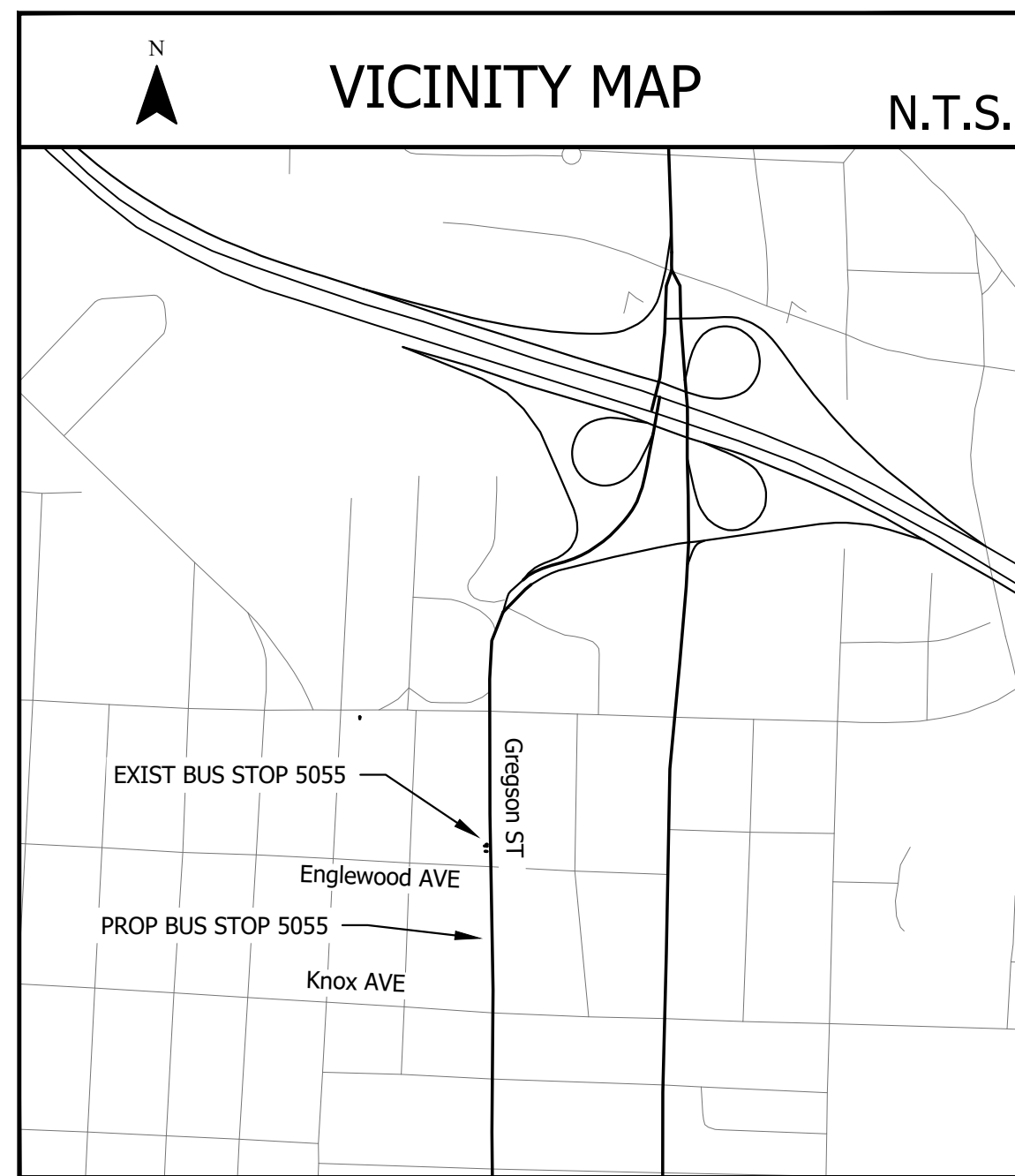
GoTriangle Bus Stop Design
Durham, NC

DETAILS

SHEET NO. 6

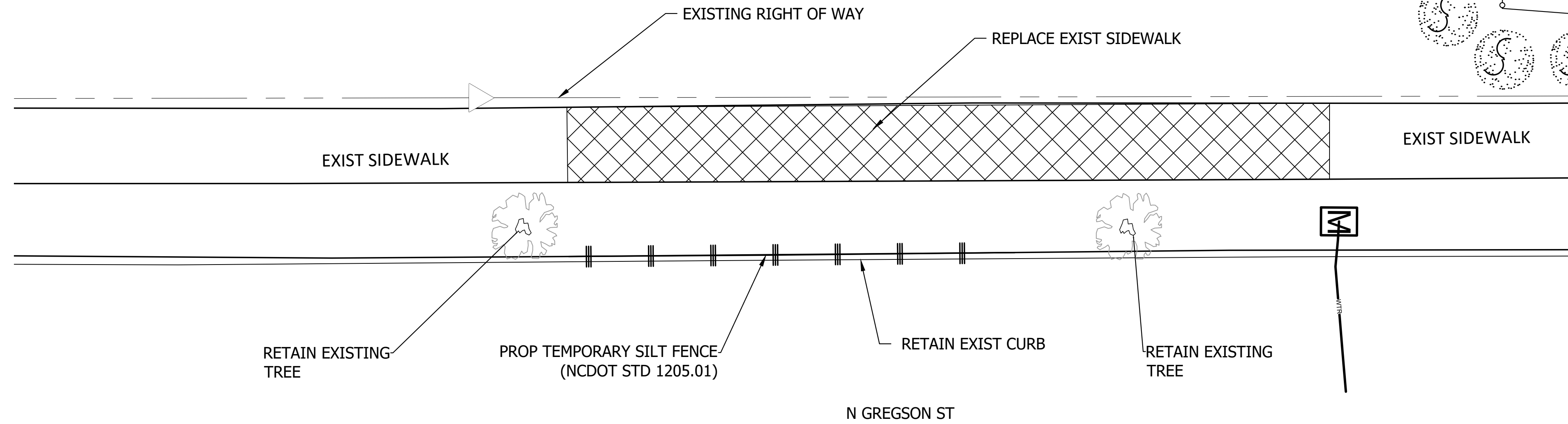
Plot Stamp: 3/3/2026 4:54:04 PM - Caroline Smith
File: H:\26\26947 - GoTriangle Planning and Design On-Call\001 - Durham Bus Stop Site Design\design_CD\CD_General Sheets B-5.dwg

EXISTING SURVEY/DEMOLITION PLAN



City of Durham	Approved	DATE	_____
ENGINEERING	_____	DATE	_____
STORMWATER	_____	DATE	_____
TRANSPORTATION	_____	DATE	_____
WATER MANAGEMENT	_____	DATE	_____
FLOODPLAIN	_____	DATE	_____

REID:102540
 REX CREWS BAILEY
 1317 N GREGSON ST



EXIST CONCRETE TO BE REMOVED

BUS STOP ID: 5055

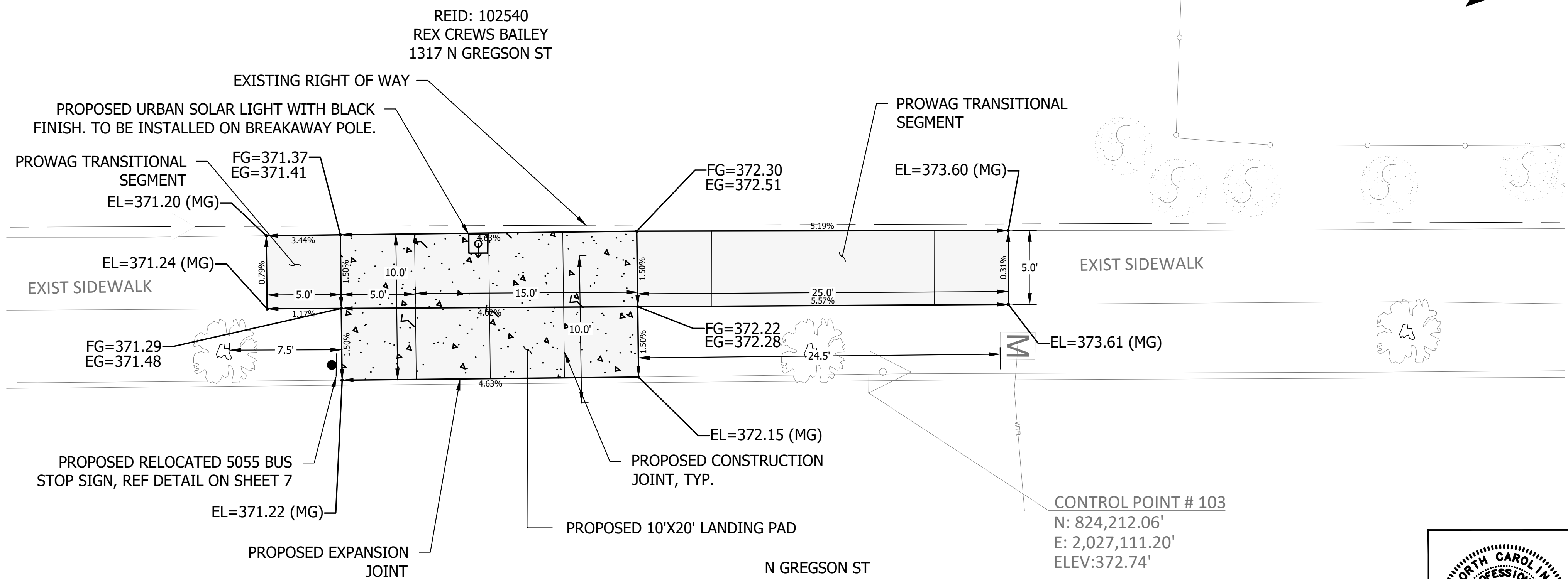
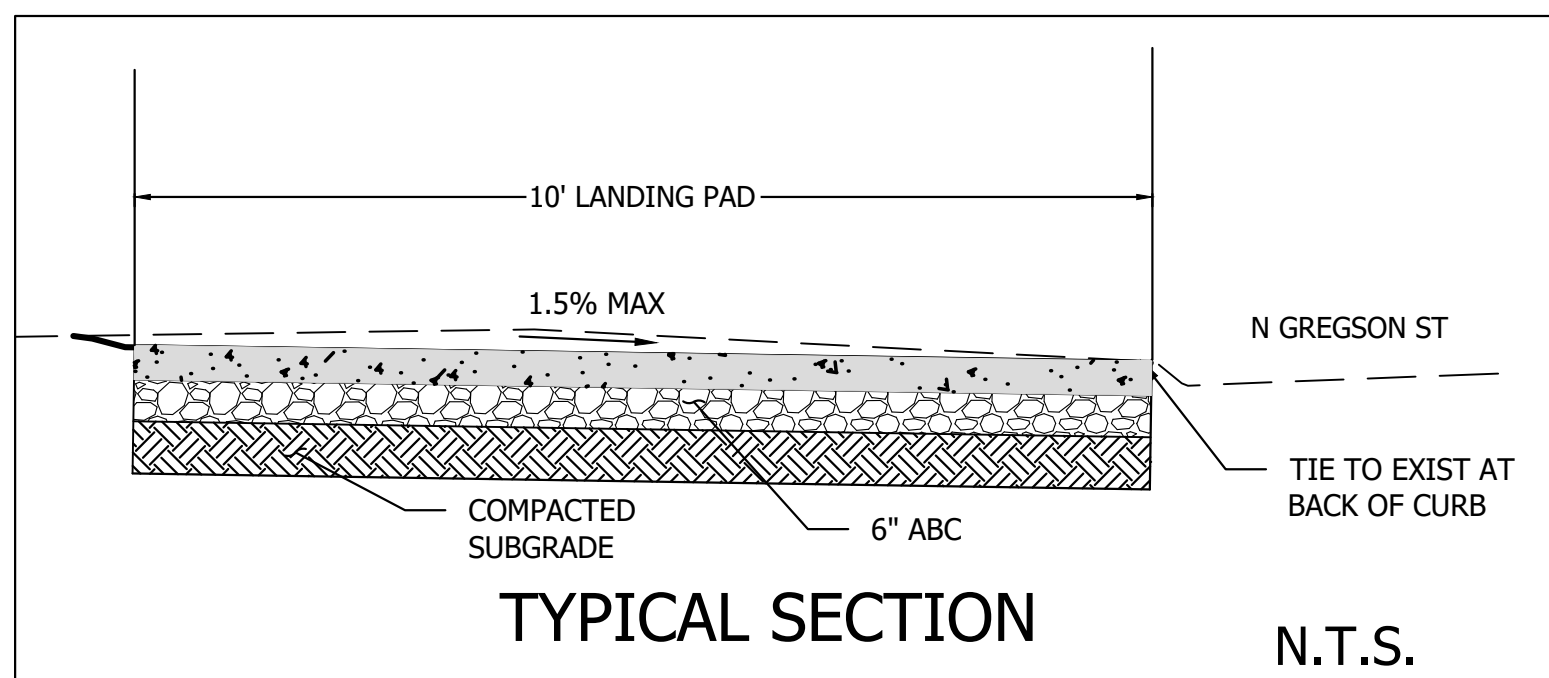
PROPOSED PLAN

NOTES:

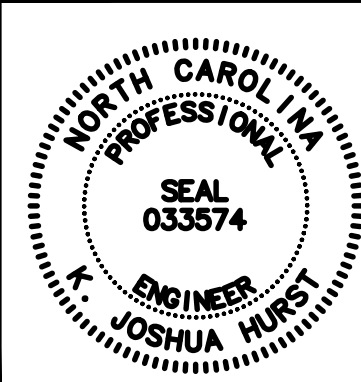
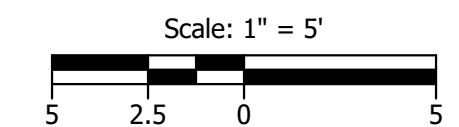
- SEE GENERAL NOTES, LIST OF STANDARDS, AND DETAILS ON SHEET 02.
- MOUNT SIGN 7'-0" ABOVE SIDEWALK. 2'-0" MIN AND 8' MAX CLEAR FROM FACE OF CURB TO EDGE OF SIGN.
- CONTRACTOR TO RETAIN AND PROTECT EXISTING UTILITIES. ANY DAMAGE TO EXISTING UTILITIES WILL REQUIRE THE CONTRACTOR TO REPLACE THE UTILITIES AT NO ADDITIONAL COST TO THE OWNER.
- IF ANY DAMAGE OCCURS TO ADJACENT SIDEWALK PANELS, CONTRACTOR TO REPLACE ENTIRE PANEL.
- CONTRACTOR TO SEED AND MULCH REGRADED AREAS.
- TRUNCATED DOMES TO BE FEDERAL YELLOW IN COLOR.
- THIS STOP IS IN A HISTORIC DISTRICT. NO WORK TO BEGIN UNTIL A CERTIFICATE OF APPROPRIATENESS IS OBTAINED. ALL AMENITIES TO HAVE BLACK FINISHES.

EG = EXISTING GRADE
 FG = FINAL GRADE
 MG = MATCH EXISTING GRADE

PROPOSED 4" CONCRETE
 PROPOSED BUS SHELTER/LANDING AREA/AMENITY 6" PAD



CONTROL POINT # 103
 N: 824,212.06'
 E: 2,027,111.20'
 ELEV: 372.74'



KITTELSON & ASSOCIATES
 NC LICENSE #C-4196
 702 OBERLIN RD, SUITE 410
 RALEIGH, NC 27605
 P. 919.926.1291

#	DATE	REVISION

Submission Date: 03/04/25
 Drawn: CKS Designed: CKS Checked: KJH

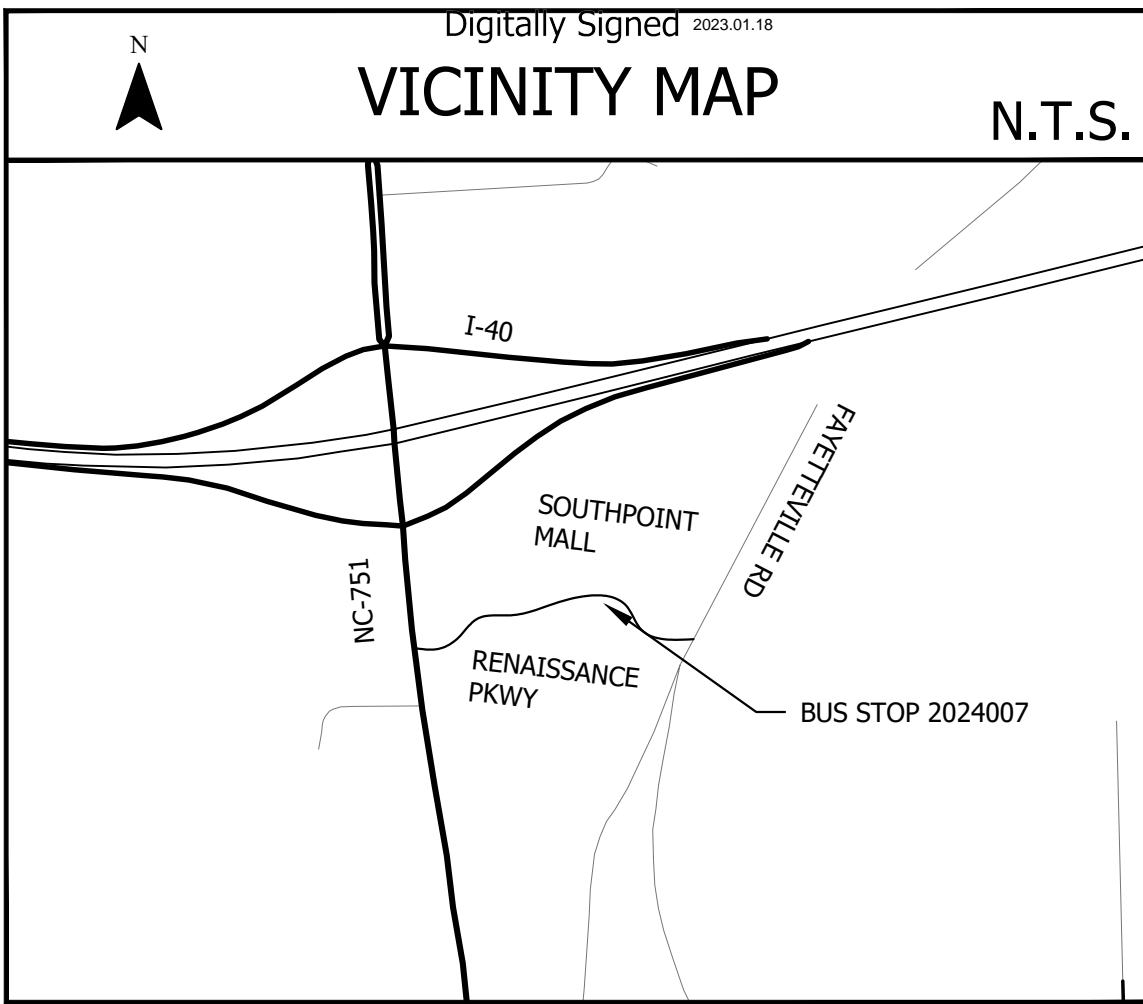
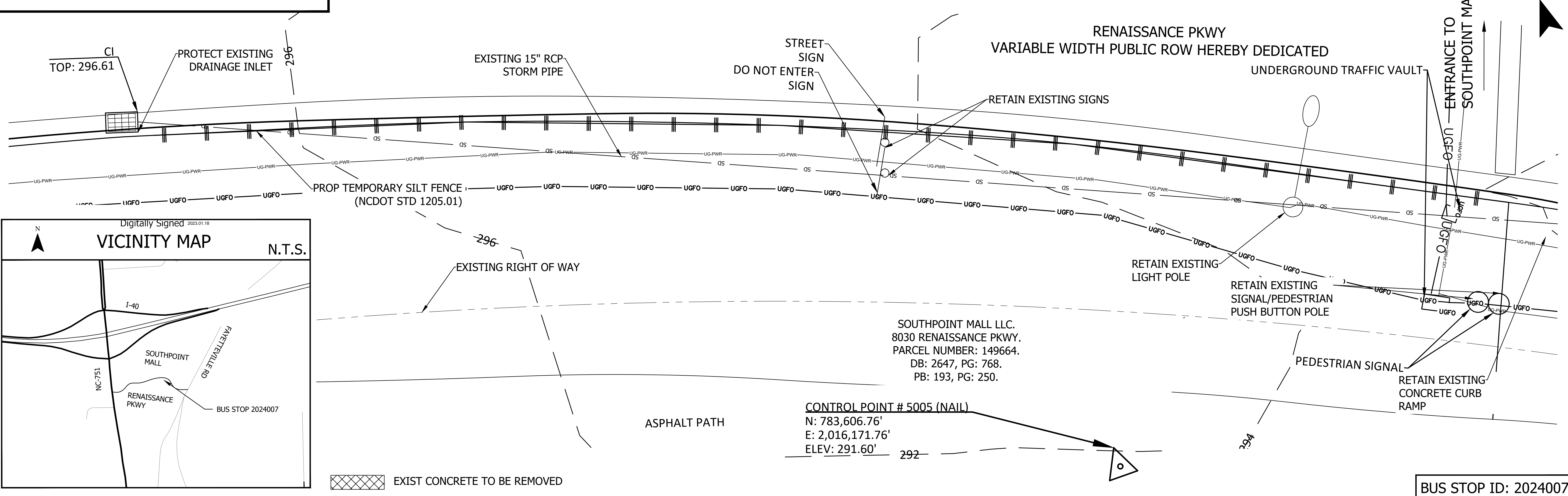
PROJECT NO. 26947

GoTriangle Bus Stop Design
 Durham, NC
 5055 - GREGSON ST AT ENGLEWOOD AVE

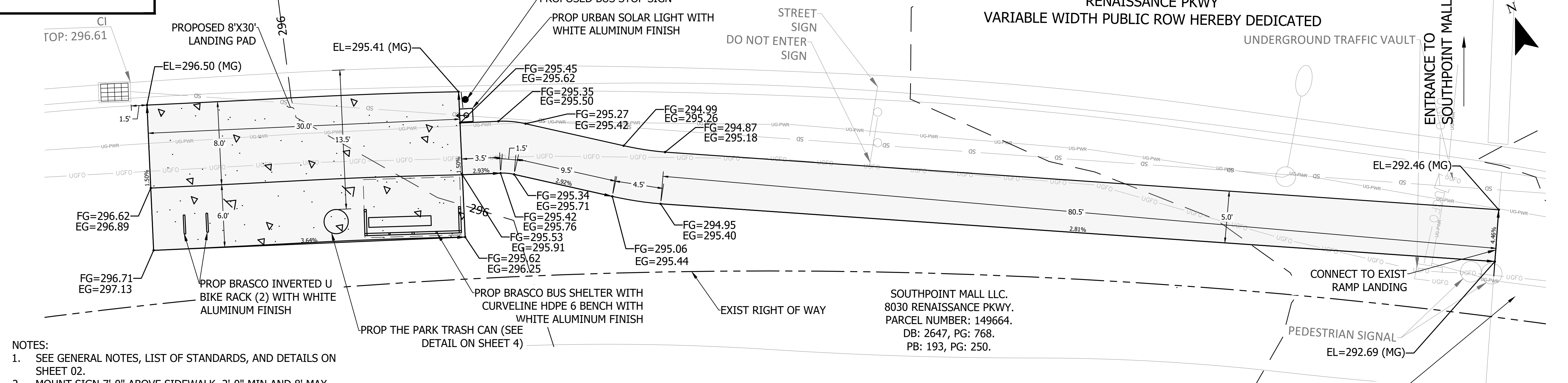
SHEET NO. 8

Plot Stamp: 3/4/2026 1:39:43 PM - Caroline Smith
 File: H:\26\26947 - GoTriangle Planning and Design On-Call\001 - Durham Bus Stop Site Design\design_CD\CD_5055.dwg

EXISTING SURVEY/DEMOLITION PLAN



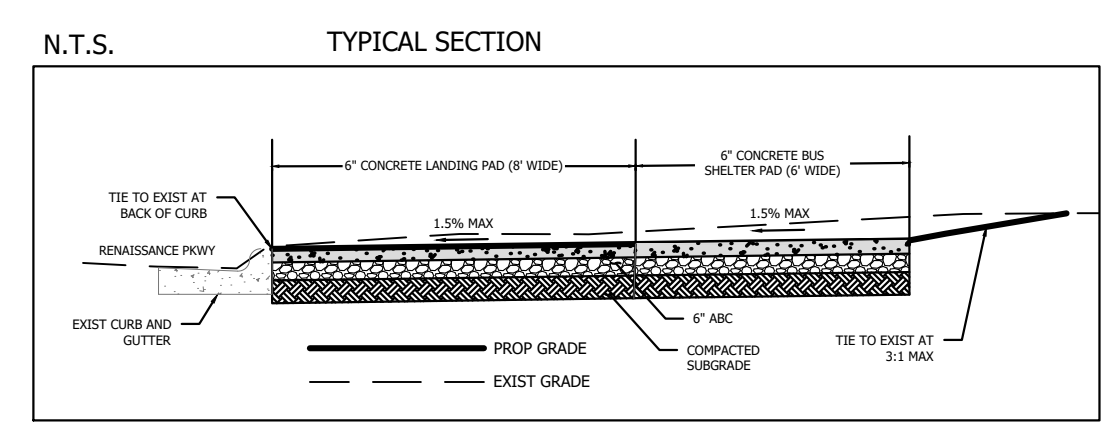
PROPOSED PLAN



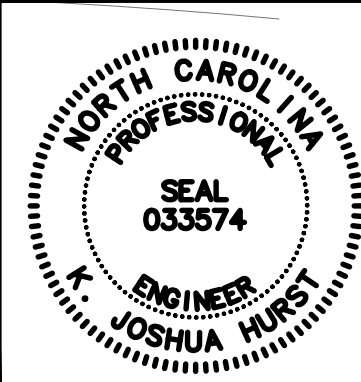
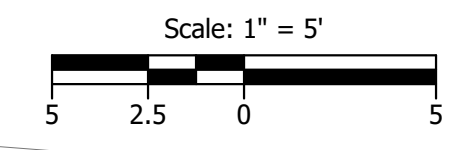
- NOTES:**
1. SEE GENERAL NOTES, LIST OF STANDARDS, AND DETAILS ON SHEET 02.
 2. MOUNT SIGN 7'-0" ABOVE SIDEWALK. 2'-0" MIN AND 8' MAX CLEAR FROM FACE OF CURB TO EDGE OF SIGN.
 3. CONTRACTOR TO RETAIN AND PROTECT EXISTING UTILITIES. ANY DAMAGE TO EXISTING UTILITIES WILL REQUIRE THE CONTRACTOR TO REPLACE THE UTILITIES AT NO ADDITIONAL COST TO THE OWNER.
 4. IF ANY DAMAGE OCCURS TO ADJACENT SIDEWALK PANELS, CONTRACTOR TO REPLACE ENTIRE PANEL.
 5. TRUNCATED DOMES TO BE FEDERAL YELLOW IN COLOR.

EG = EXISTING GRADE
 FG = FINISHED GRADE
 MG = MATCH EXISTING GRADE

PROPOSED BUS SHELTER/LANDING AREA/AMENITY 6" PAD
 PROPOSED 4" CONCRETE



ENGINEERING	DATE
STORMWATER	DATE
TRANSPORTATION	DATE
WATER MANAGEMENT	DATE
FLOODPLAIN	DATE



KITTELSON & ASSOCIATES
 NC LICENSE #C-4196
 702 OBERLIN RD, SUITE 410
 RALEIGH, NC 27605
 P. 919.926.1291

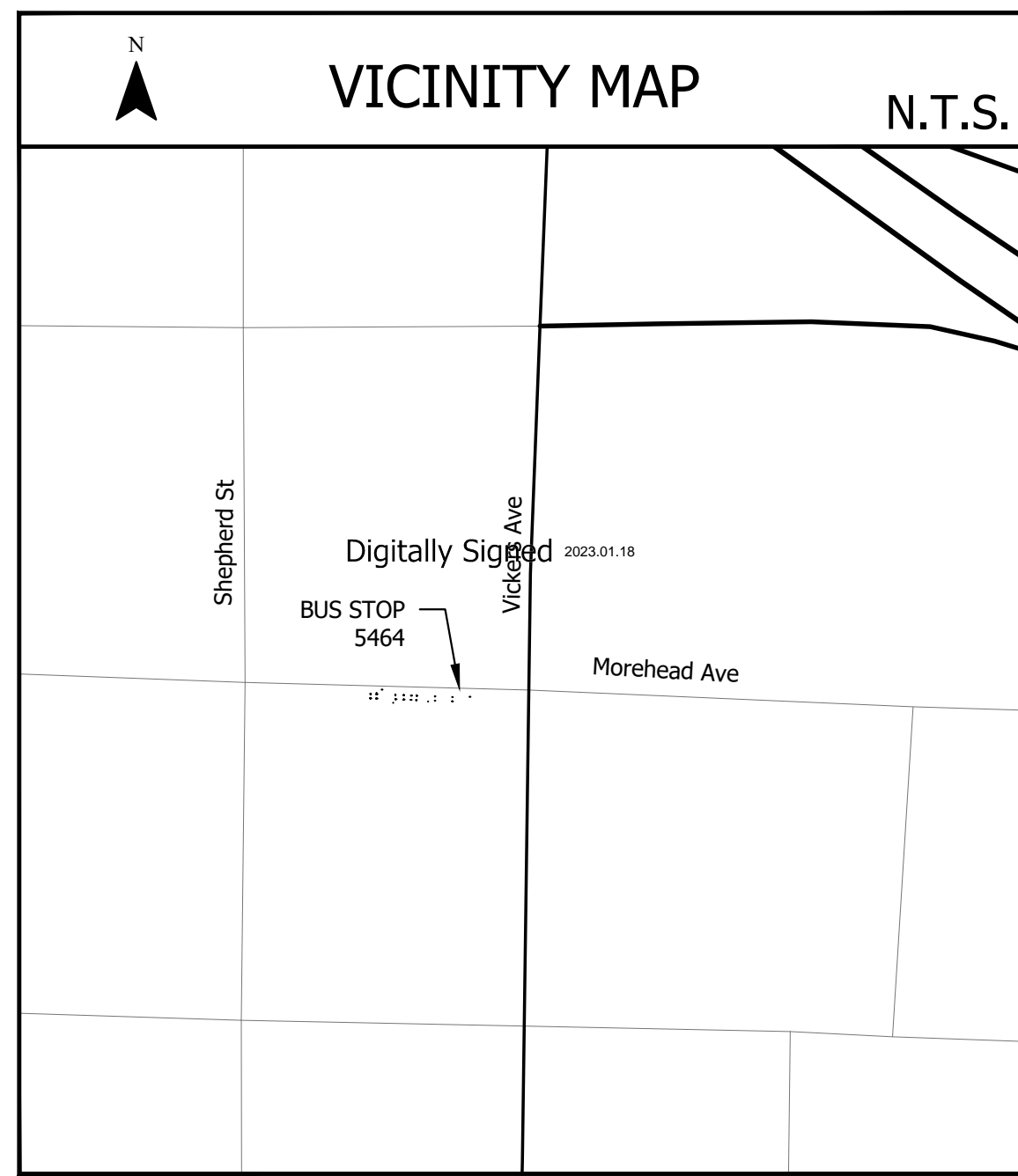
REVISION	DATE	#

Submission Date: 03/04/25
 Drawn: CKS Designed: CKS Checked: KJH
 PROJECT NO. 26947

GoTriangle Bus Stop Design
 Durham, NC
 2024007 RENAISSANCE PKWY AT SOUTHPOINT (EB)
 SHEET NO. 9

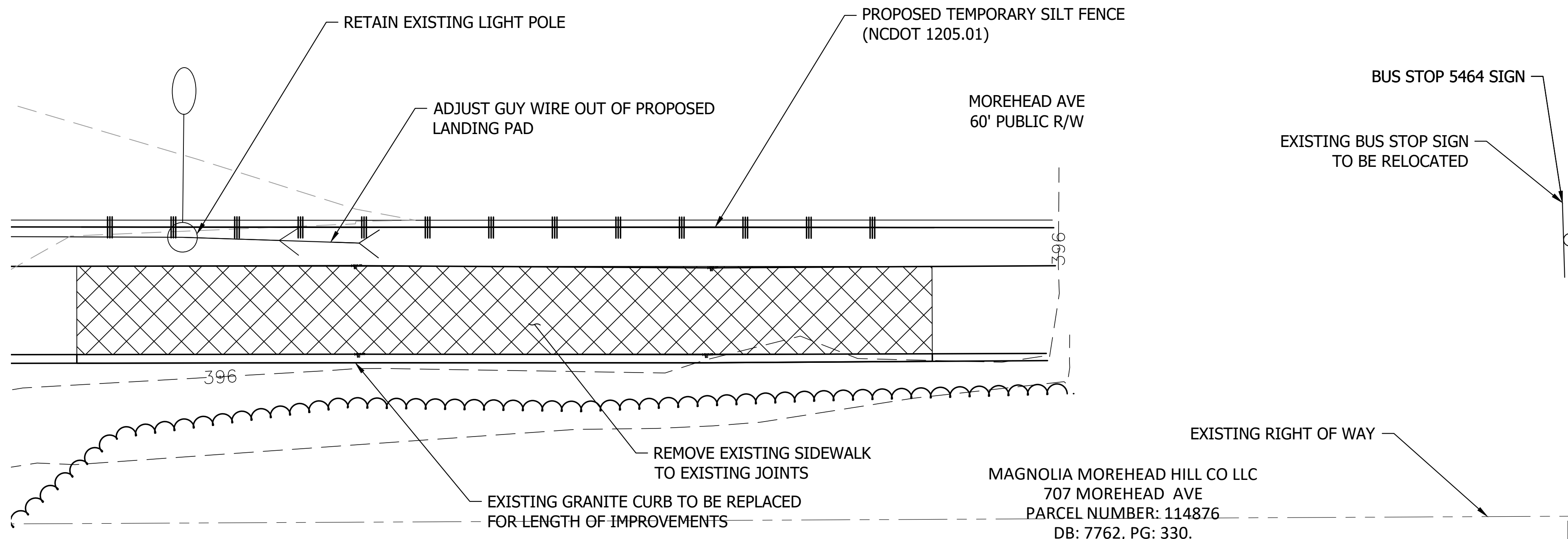
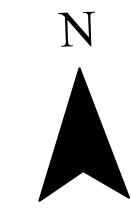
Plot Stamp: 3/3/2026 4:56:13 PM - Caroline Smith
 File: H:\26\26947 - GoTriangle Planning and Design On-Call\001 - Durham Bus Stop Site Design\design_CD\CD_2024007.dwg

EXISTING SURVEY/DEMOLITION PLAN



City of Durham Approved		DATE _____
ENGINEERING	_____	DATE _____
STORMWATER	_____	DATE _____
TRANSPORTATION	_____	DATE _____
WATER MANAGEMENT	_____	DATE _____
FLOODPLAIN	_____	DATE _____

CONTROL POINT # 1 (NAIL)
 N: 815,877.91'
 E: 2,025,978.64'
 ELEV: 395.76'



EXIST CONCRETE TO BE REMOVED

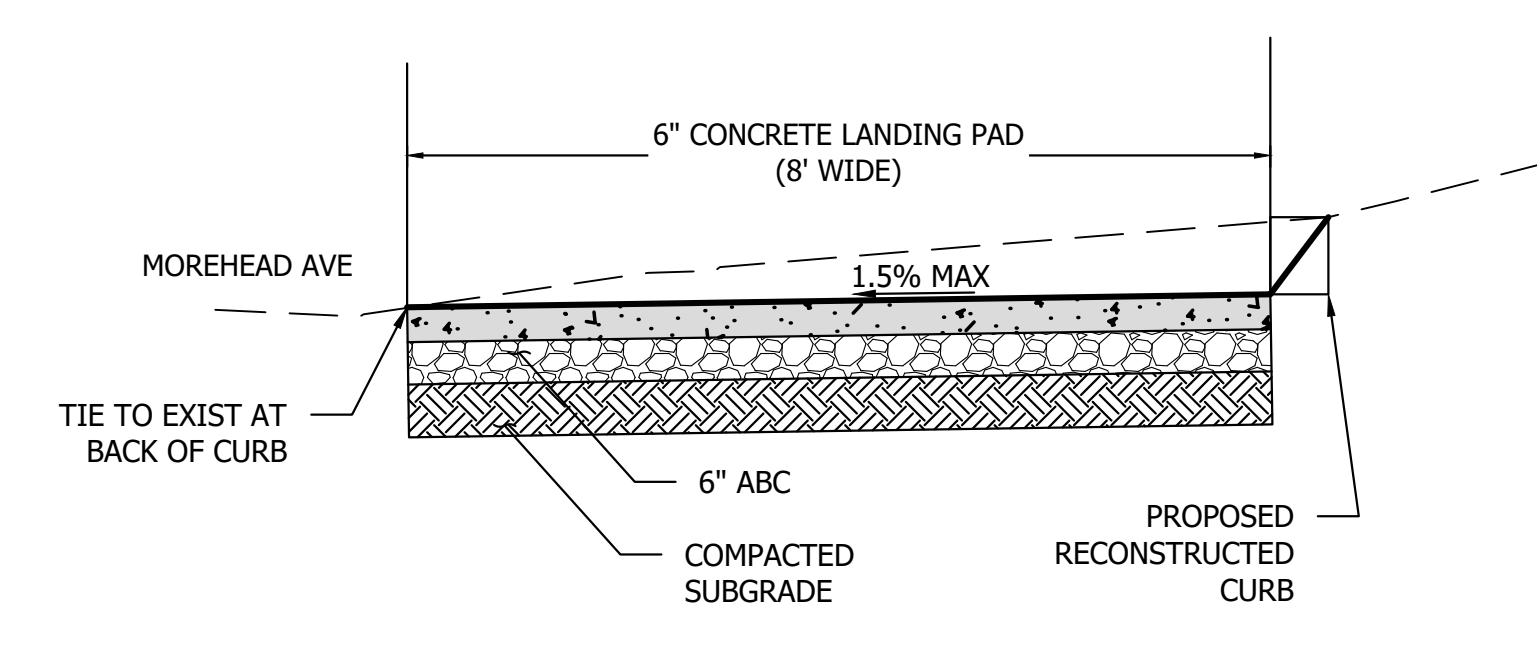
BUS STOP ID: 5464

PROPOSED PLAN

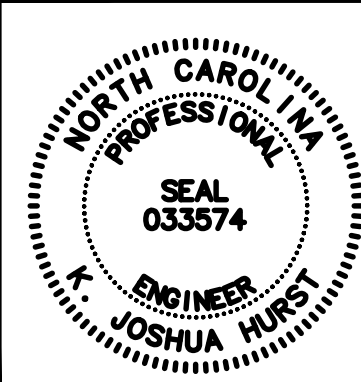
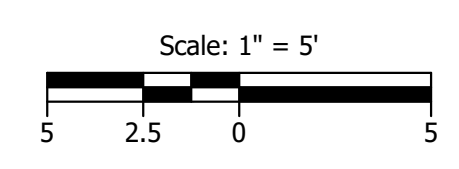
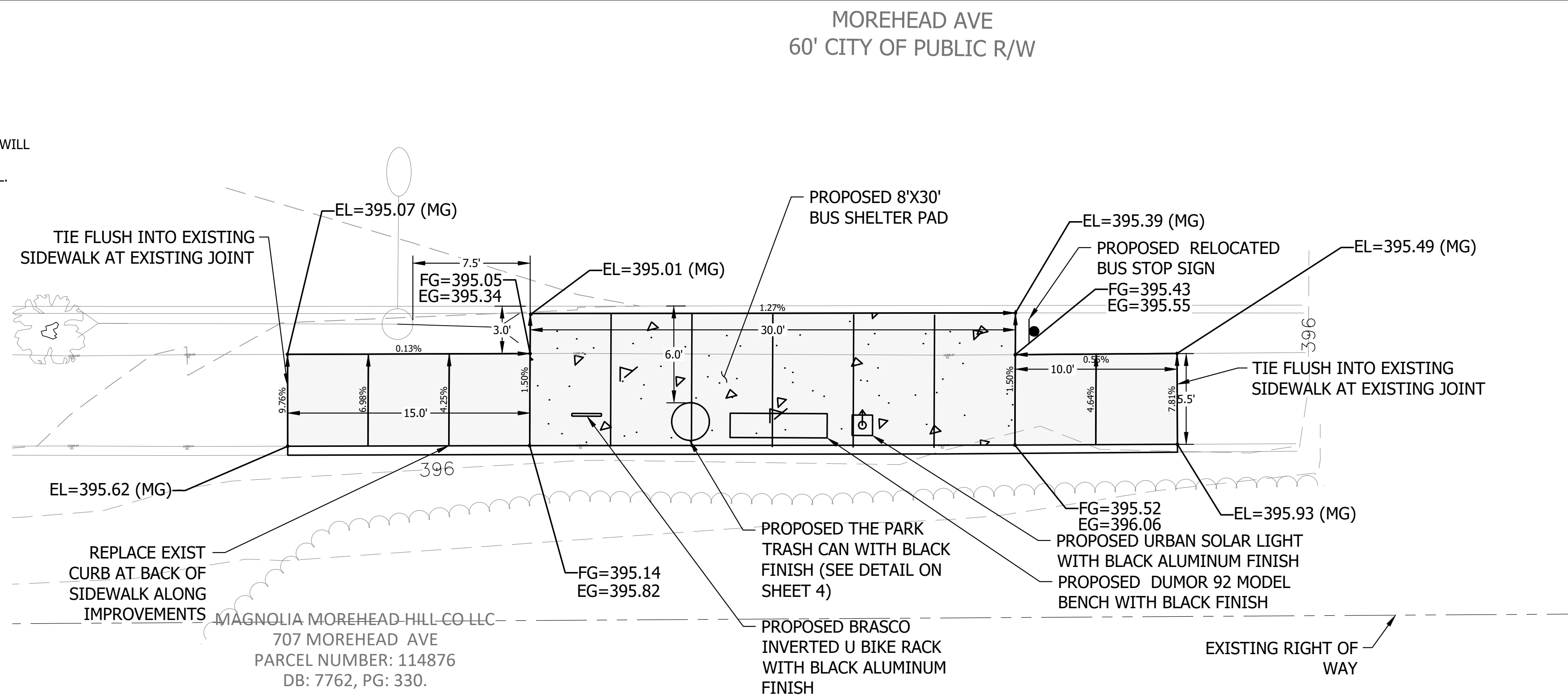
- NOTES:**
- SEE GENERAL NOTES, LIST OF STANDARDS, AND DETAILS ON SHEET 02.
 - MOUNT SIGN 7'-0" ABOVE SIDEWALK. 2'-0" MIN AND 8' MAX CLEAR FROM FACE OF CURB TO EDGE OF SIGN.
 - CONTRACTOR TO RETAIN AND PROTECT EXISTING UTILITIES. ANY DAMAGE TO EXISTING UTILITIES WILL REQUIRE THE CONTRACTOR TO REPLACE THE UTILITIES AT NO ADDITIONAL COST TO THE OWNER.
 - IF ANY DAMAGE OCCURS TO ADJACENT SIDEWALK PANELS, CONTRACTOR TO REPLACE ENTIRE PANEL.
 - CONTRACTOR TO SEED AND MULCH REGRADED AREAS.
 - TRUNCATED DOMES TO BE FEDERAL YELLOW IN COLOR.
 - THIS STOP IS IN A HISTORIC DISTRICT. NO WORK TO BEGIN UNTIL A CERTIFICATE OF APPROPRIATENESS IS OBTAINED. ALL AMENITIES TO HAVE BLACK FINISHES.

EG = EXISTING GRADE
 FG = FINAL GRADE
 MG = MATCH EXISTING GRADE

PROPOSED BUS SHELTER/LANDING AREA/AMENITY 6" PAD
 PROPOSED 4" CONCRETE



N.T.S. TYPICAL SECTION



KITTELSON & ASSOCIATES
 NC LICENSE #C-4196
 702 OBERLIN RD, SUITE 410
 RALEIGH, NC 27605
 P. 919.926.1291

#	DATE	REVISION

Submission Date: 03/04/25
 Drawn: LNB
 Designed: LNB
 Checked: KJH
 PROJECT NO. 26947

GoTriangle Bus Stop Design
 Durham, NC
 5464 MOREHEAD AVE AT VICKERS AVE (EB)

SHEET NO. 11

Plot Stamp: 3/3/2026 4:57:49 PM - Caroline Smith
 File: H:\26\26947 - GoTriangle Planning and Design On-Call\001 - Durham Bus Stop Site Design\design_CD\CD_5464.dwg