

ISOMETRIC VIEW
PAY LIMITS FOR CURB RAMP

SECTION A-A
SECTION B-B

NOTES:
1. Detectable warning domes will cover 2'-0" length and full width of the ramp where it is flush with the pavement.

CITY OF DURHAM, NC
USE WITH THE STANDARD SPECIFICATIONS ONLY

Dept. of Public Works
101 City Hall Plaza
Durham, NC 27701

Voice (919) 560-4326
www.durhamnc.gov

SINGLE CURB RAMP WITH PROPOSED CURB & GUTTER

SCALE: Not to Scale
DETAIL# 405.03
REVISION DATE: 06/2017
SHEET# 2 of 2

SECTION A-A
TRANSVERSE EXPANSION JOINT IN SIDEWALK

SECTION B-B
CONTRACTION (GROOVE) JOINT IN SIDEWALK

NOTES:
1. In addition to complying with Durham standards sidewalks shall conform to NCDOT standards and specifications. In cases where clarifications are needed, the City shall make the determination.
2. Contraction (Groove) joints with 1/8" radius shall be placed at 5 foot intervals and be one inch deep with joint filler.
3. One half inch (1/2") transverse expansion joints shall be placed at intervals no more than 50 feet and shall match expansion/construction joints in adjacent curb.
4. A sealed 1/2" expansion joint is required where the sidewalk abuts buildings or any rigid structure.
5. Joint materials shall limit shrink/swell so post construction installation results in a maximum of 1/4" from flush.
6. Concrete compressive strength shall be 3,000 psi in 28 days.
7. Top 6" of subgrade beneath the sidewalk shall be compacted to 100% Standard Proctor density. The City may require testing at its discretion.
8. Six inch depth is required at all driveways, intersections (PC to PT), at Handicap ramps, and commercially developed or zoned areas.
9. Undercutting of unsuitable subgrade material and/or placement of up to 6 inches of incidental ABC stone may be required to obtain proper bedding.
10. The minimum width of the verge is one foot; otherwise the sidewalk shall abut the back of the curb and be six feet wide and six inches thick.
11. Lids for junction boxes, structures, or utility vaults shall be non-skid, meet NCDOT standards, and be submitted to the City for review and approval prior to installation.
12. Provide a minimum one foot wide flat area at the back of sidewalks before starting any cut or fill slope.

CITY OF DURHAM, NC
USE WITH THE STANDARD SPECIFICATIONS ONLY

Dept. of Public Works
101 City Hall Plaza
Durham, NC 27701

Voice (919) 560-4326
www.durhamnc.gov

CONCRETE SIDEWALKS

SCALE: Not to Scale
DETAIL# 402.02
REVISION DATE: 06/2017
SHEET# 3 of 3

SIDEWALK abutting CURB / RIGID STRUCTURE

SECTION D-D

NOTES:
1. In addition to complying with Durham standards sidewalks shall conform to NCDOT standards and specifications. In cases where clarifications are needed, the City shall make the determination.
2. Contraction (Groove) joints with 1/8" radius shall be placed at 5 foot intervals and be one inch deep with joint filler.
3. One half inch (1/2") transverse expansion joints shall be placed at intervals no more than 50 feet and shall match expansion/construction joints in adjacent curb.
4. A sealed 1/2" expansion joint is required where the sidewalk abuts buildings or any rigid structure.
5. Joint materials shall limit shrink/swell so post construction installation results in a maximum of 1/4" from flush.
6. Concrete compressive strength shall be 3,000 psi in 28 days.
7. Top 6" of subgrade beneath the sidewalk shall be compacted to 100% Standard Proctor density. The City may require testing at its discretion.
8. Six inch depth is required at all driveways, intersections (PC to PT), at Handicap ramps, and commercially developed or zoned areas.
9. Undercutting of unsuitable subgrade material and/or placement of up to 6 inches of incidental ABC stone may be required to obtain proper bedding.
10. The minimum width of the verge is one foot; otherwise the sidewalk shall abut the back of the curb and be six feet wide and six inches thick.
11. Lids for junction boxes, structures, or utility vaults shall be non-skid, meet NCDOT standards, and be submitted to the City for review and approval prior to installation.
12. Provide a minimum one foot wide flat area at the back of sidewalks before starting any cut or fill slope.

CITY OF DURHAM, NC
USE WITH THE STANDARD SPECIFICATIONS ONLY

Dept. of Public Works
101 City Hall Plaza
Durham, NC 27701

Voice (919) 560-4326
www.durhamnc.gov

CONCRETE SIDEWALKS

SCALE: Not to Scale
DETAIL# 402.02
REVISION DATE: 06/2023
SHEET# 2 of 3

TYPICAL SIDEWALK with (VERGE) GRASS UTILITY STRIP

SECTION C-C

NOTES:
1. In addition to complying with Durham standards sidewalks shall conform to NCDOT standards and specifications. In cases where clarifications are needed, the City shall make the determination.
2. Contraction (Groove) joints with 1/8" radius shall be placed at 5 foot intervals and be one inch deep with joint filler.
3. One half inch (1/2") transverse expansion joints shall be placed at intervals no more than 50 feet and shall match expansion/construction joints in adjacent curb.
4. A sealed 1/2" expansion joint is required where the sidewalk abuts buildings or any rigid structure.
5. Joint materials shall limit shrink/swell so post construction installation results in a maximum of 1/4" from flush.
6. Concrete compressive strength shall be 3,000 psi in 28 days.
7. Top 6" of subgrade beneath the sidewalk shall be compacted to 100% Standard Proctor density. The City may require testing at its discretion.
8. Six inch depth is required at all driveways, intersections (PC to PT), at Handicap ramps, and commercially developed or zoned areas.
9. Undercutting of unsuitable subgrade material and/or placement of up to 6 inches of incidental ABC stone may be required to obtain proper bedding.
10. The minimum width of the verge is one foot; otherwise the sidewalk shall abut the back of the curb and be six feet wide and six inches thick.
11. Lids for junction boxes, structures, or utility vaults shall be non-skid, meet NCDOT standards, and be submitted to the City for review and approval prior to installation.
12. Provide a minimum one foot wide flat area at the back of sidewalks before starting any cut or fill slope.

CITY OF DURHAM, NC
USE WITH THE STANDARD SPECIFICATIONS ONLY

Dept. of Public Works
101 City Hall Plaza
Durham, NC 27701

Voice (919) 560-4326
www.durhamnc.gov

CONCRETE SIDEWALKS

SCALE: Not to Scale
DETAIL# 402.02
REVISION DATE: 06/2017
SHEET# 1 of 3

ISOMETRIC VIEW
PAY LIMITS FOR CURB RAMP

SECTION A-A
SECTION B-B

NOTES:
1. Detectable warning domes will cover 2'-0" length and full width of the ramp where it is flush with the pavement.

CITY OF DURHAM, NC
USE WITH THE STANDARD SPECIFICATIONS ONLY

Dept. of Public Works
101 City Hall Plaza
Durham, NC 27701

Voice (919) 560-4326
www.durhamnc.gov

SINGLE CURB RAMP WITH PROPOSED CURB & GUTTER

SCALE: Not to Scale
DETAIL# 405.03
REVISION DATE: 06/2017
SHEET# 1 of 2

4' COMPACTED ABC UNDER ALL CURB + GUTTER

TRANSVERSE EXPANSION JOINT IN CURB AND GUTTER

NOTES:
1. Use non-reinforced, air entrained, concrete with a minimum strength of 3000 lbs.
2. Contraction joints shall be placed at 10' intervals.
3. Contraction joints may be installed by the use of templates or formed by other approved methods. Where such joints are not formed by templates, a minimum depth of 1 1/2" shall be obtained.
4. All construction joints shall be filled with joint filler and hot applied joint sealer. See NCDOT specifications.
5. Expansion joints shall be spaced at 90' intervals, and adjacent to all rigid objects.

CITY OF DURHAM, NC
USE WITH THE STANDARD SPECIFICATIONS ONLY

Dept. of Public Works
101 City Hall Plaza
Durham, NC 27701

Voice (919) 560-4326
www.durhamnc.gov

CONCRETE CURB AND GUTTER

SCALE: Not to Scale
DETAIL# 402.01
REVISION DATE: 06/2017
SHEET# 2 of 2

18" MOUNTABLE CURB + GUTTER

30" CURB + GUTTER

30" ROLLED CURB + GUTTER

24" CURB + GUTTER

30" VALLEY GUTTER

24" SHOULDER CURB

36" OR 48" VALLEY GUTTER

NOTES:
1. Use non-reinforced, air entrained, concrete with a minimum strength of 3000 lbs.
2. Contraction joints shall be placed at 10' intervals.
3. Contraction joints may be installed by the use of templates or formed by other approved methods. Where such joints are not formed by templates, a minimum depth of 1 1/2" shall be obtained.
4. All construction joints shall be filled with joint filler and hot applied joint sealer. See NCDOT specifications.
5. Expansion joints shall be spaced at 90' intervals, and adjacent to all rigid objects.

CITY OF DURHAM, NC
USE WITH THE STANDARD SPECIFICATIONS ONLY

Dept. of Public Works
101 City Hall Plaza
Durham, NC 27701

Voice (919) 560-4326
www.durhamnc.gov

CONCRETE CURB AND GUTTER

SCALE: Not to Scale
DETAIL# 402.01
REVISION DATE: 06/2023
SHEET# 1 of 2

PREFABRICATED MODULAR GRAVITY WALL

NOTES:
1. Use non-reinforced, air entrained, concrete with a minimum strength of 3000 lbs.
2. Contraction joints shall be placed at 10' intervals.
3. Contraction joints may be installed by the use of templates or formed by other approved methods. Where such joints are not formed by templates, a minimum depth of 1 1/2" shall be obtained.
4. All construction joints shall be filled with joint filler and hot applied joint sealer. See NCDOT specifications.
5. Expansion joints shall be spaced at 90' intervals, and adjacent to all rigid objects.

CITY OF DURHAM, NC
USE WITH THE STANDARD SPECIFICATIONS ONLY

Dept. of Public Works
101 City Hall Plaza
Durham, NC 27701

Voice (919) 560-4326
www.durhamnc.gov

CONCRETE CURB AND GUTTER

SCALE: Not to Scale
DETAIL# 402.01
REVISION DATE: 06/2023
SHEET# 1 of 2

Triangle
Durham

GO

KITTELSON & ASSOCIATES

NC LICENSE #C-4196
702 OBERLIN RD, SUITE 410
RALEIGH, NC 27605
P. 919.926.1291

APPROVED

REVISION

DATE

Submission Date: 03/31/26

Drawn: CKS
Designed: CKS
Checked: KJH

PROJECT NO. 26947

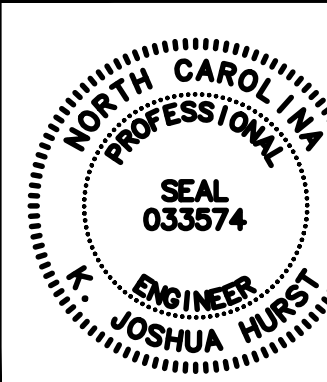
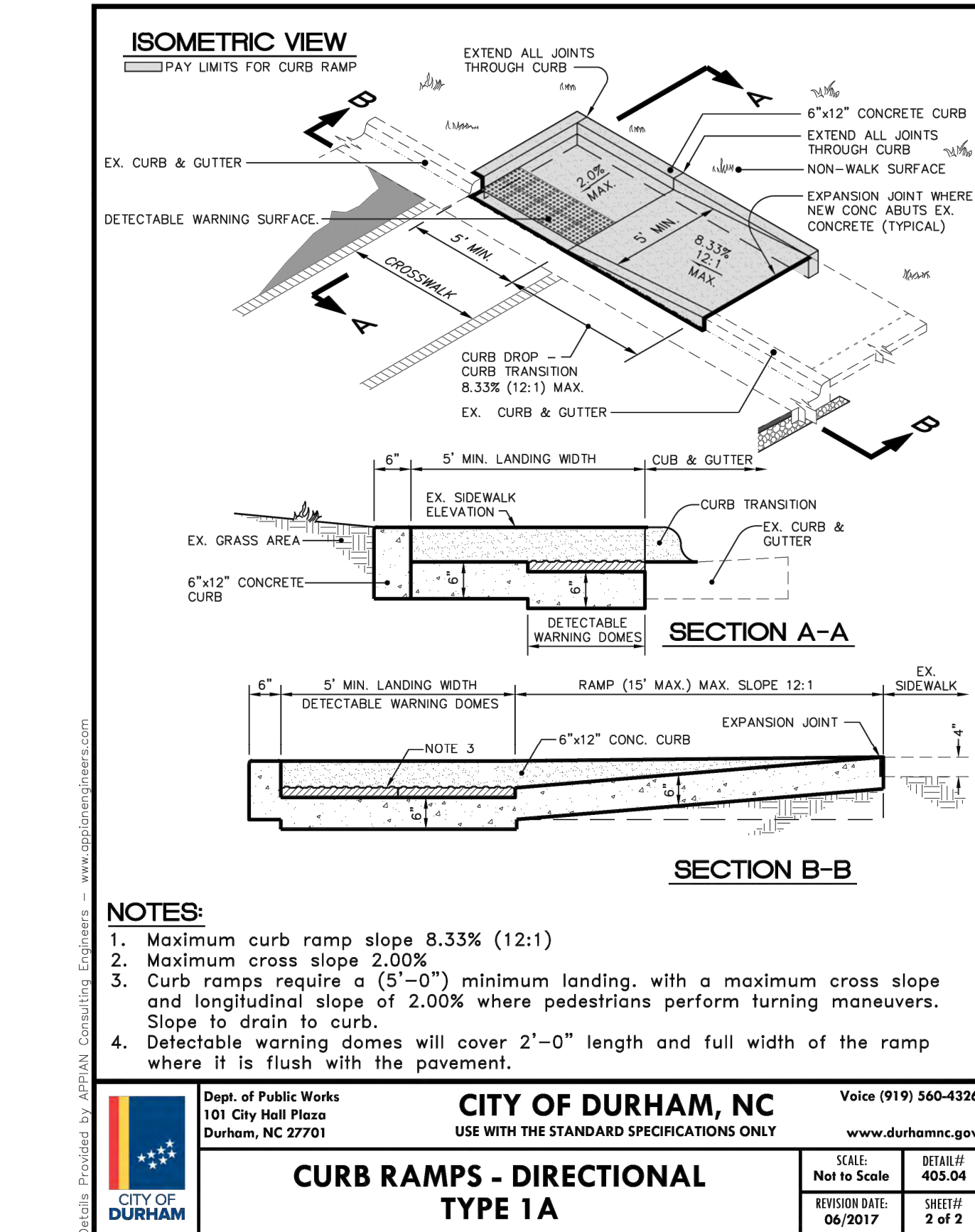
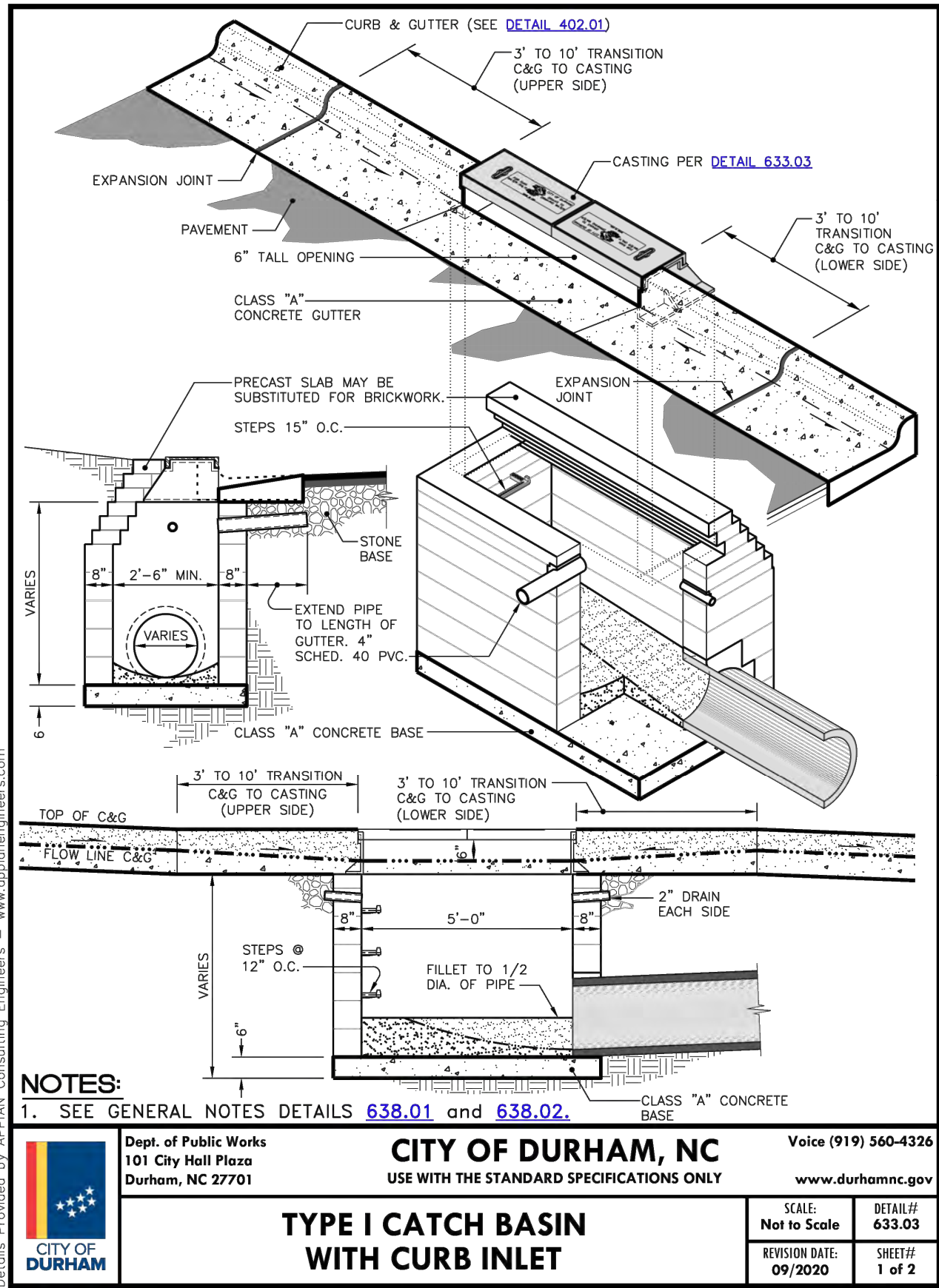
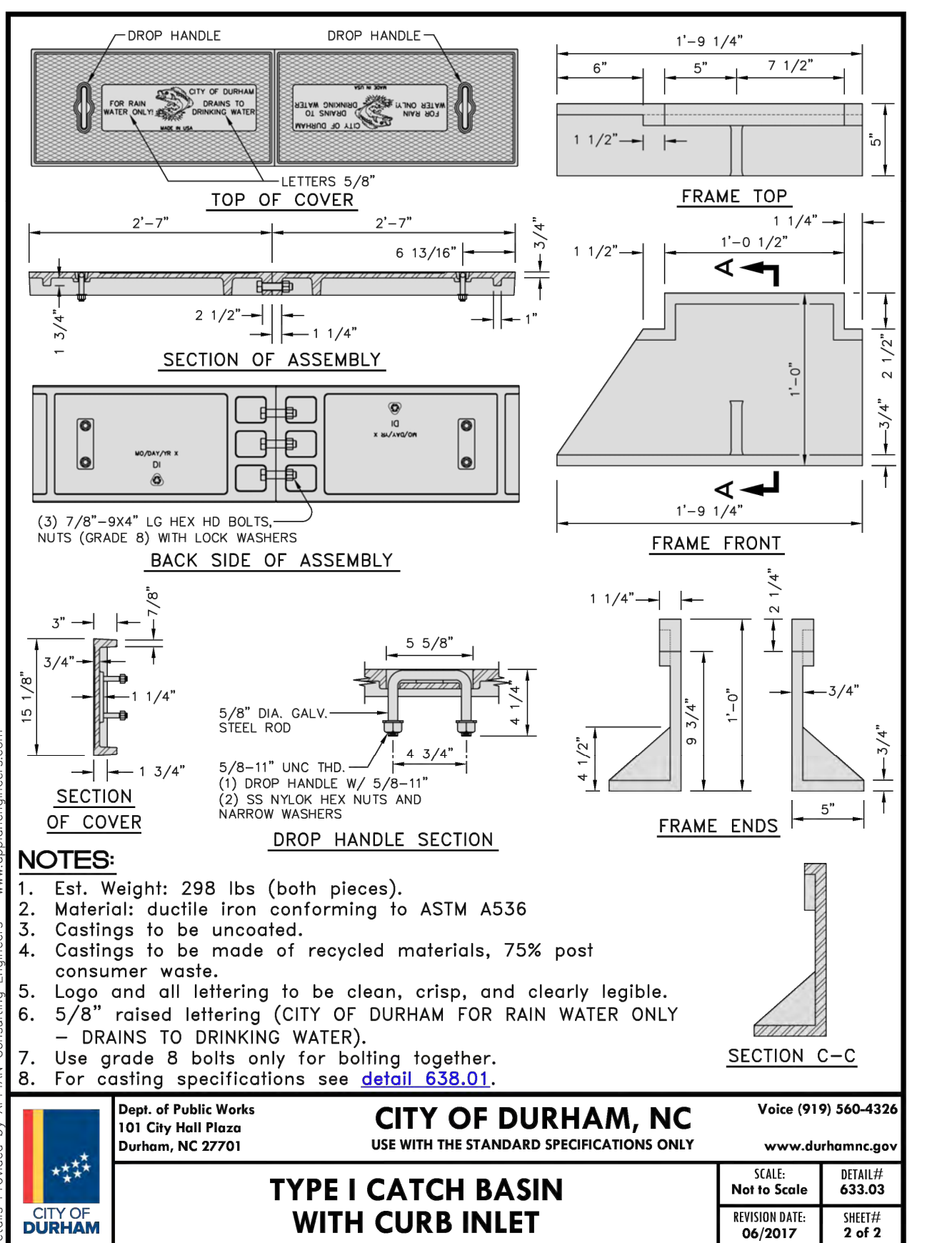
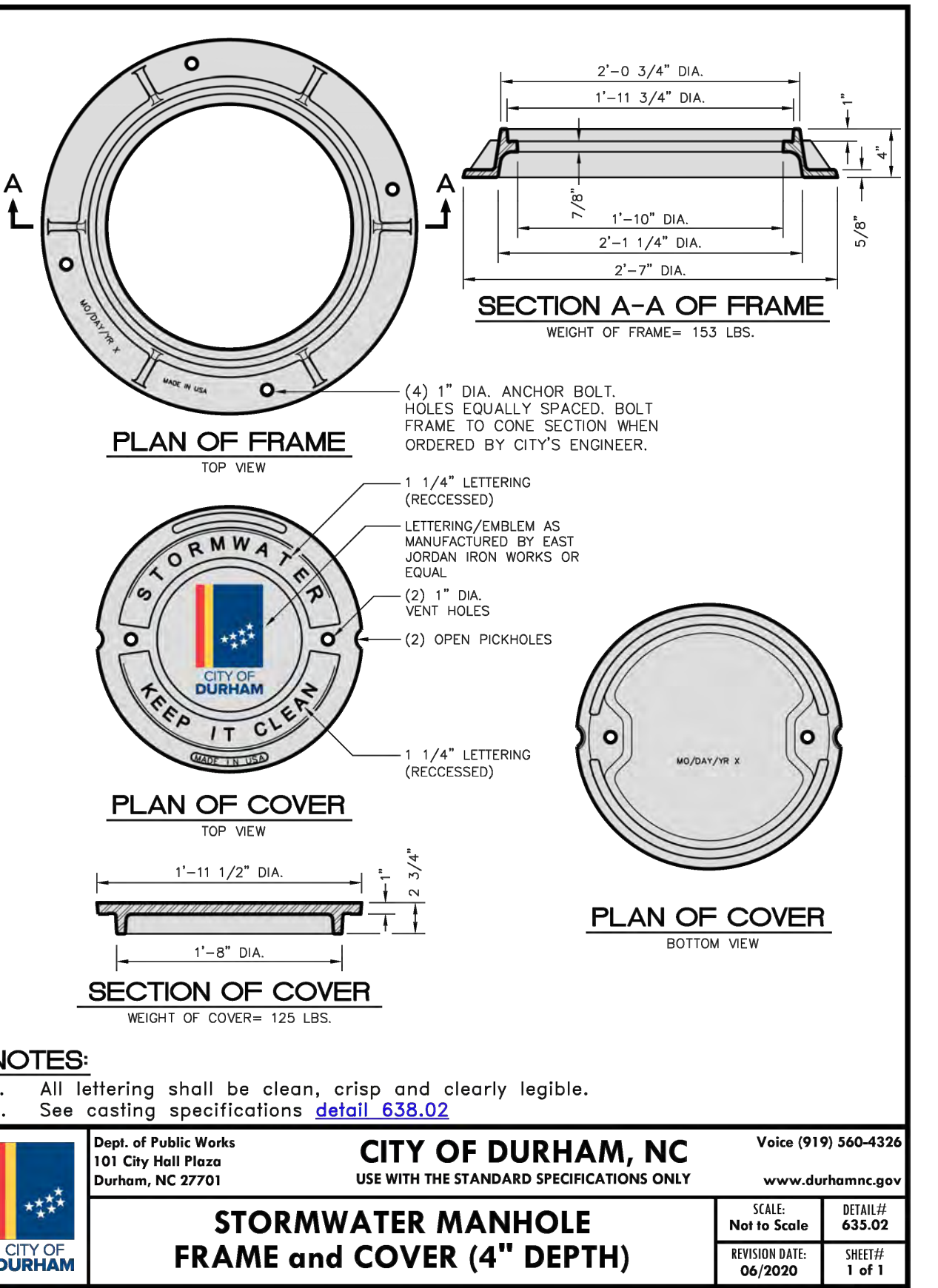
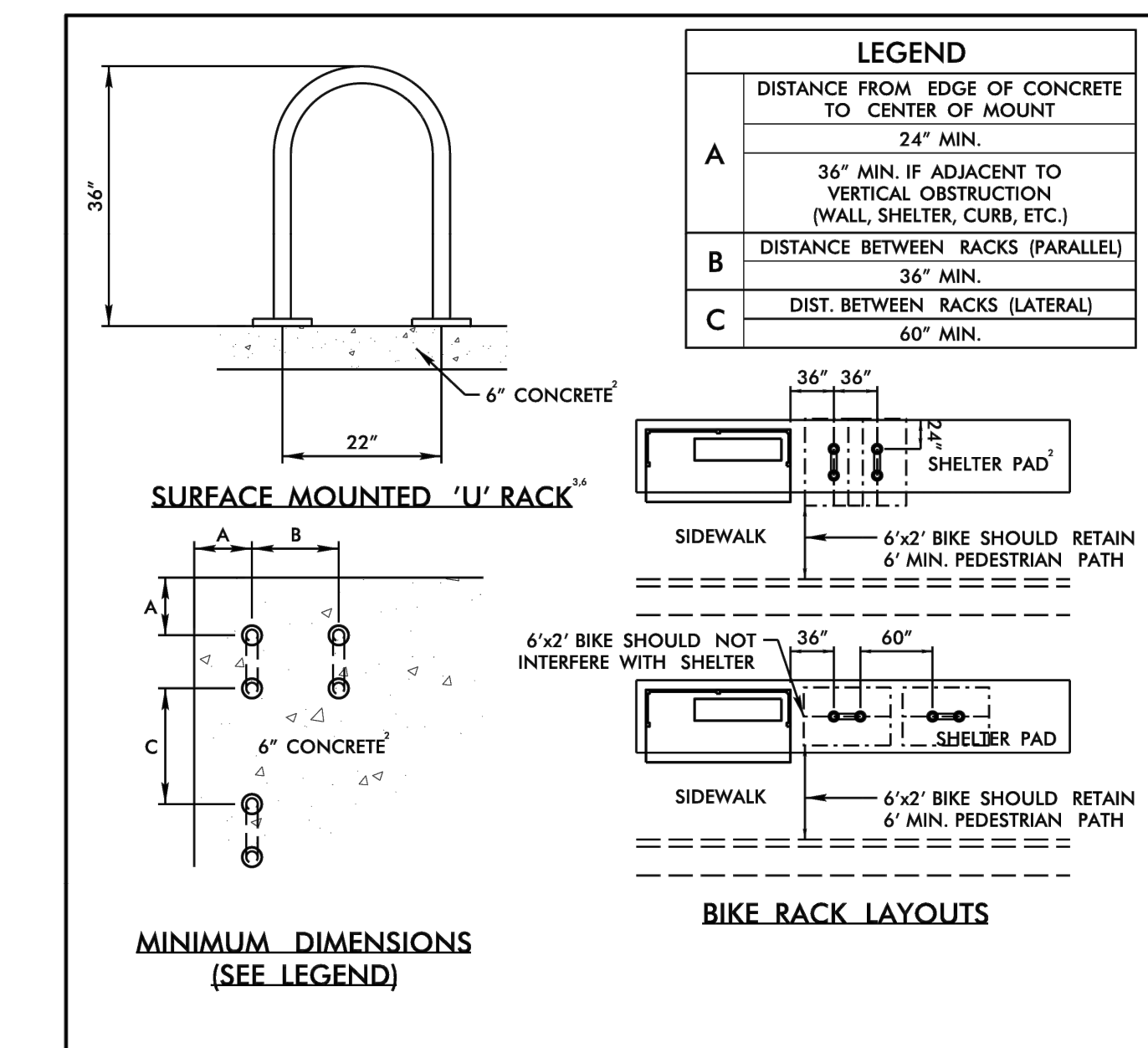
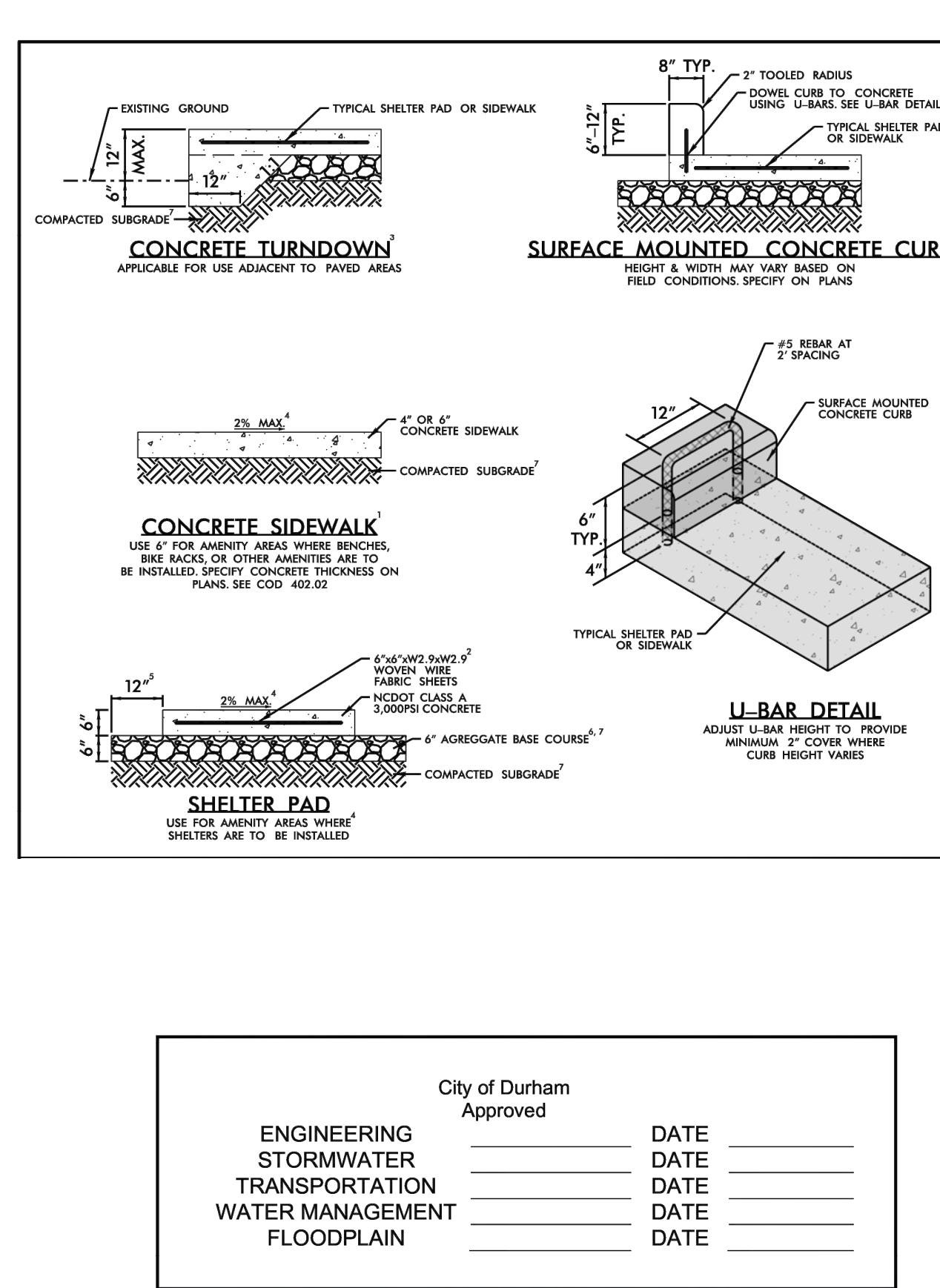
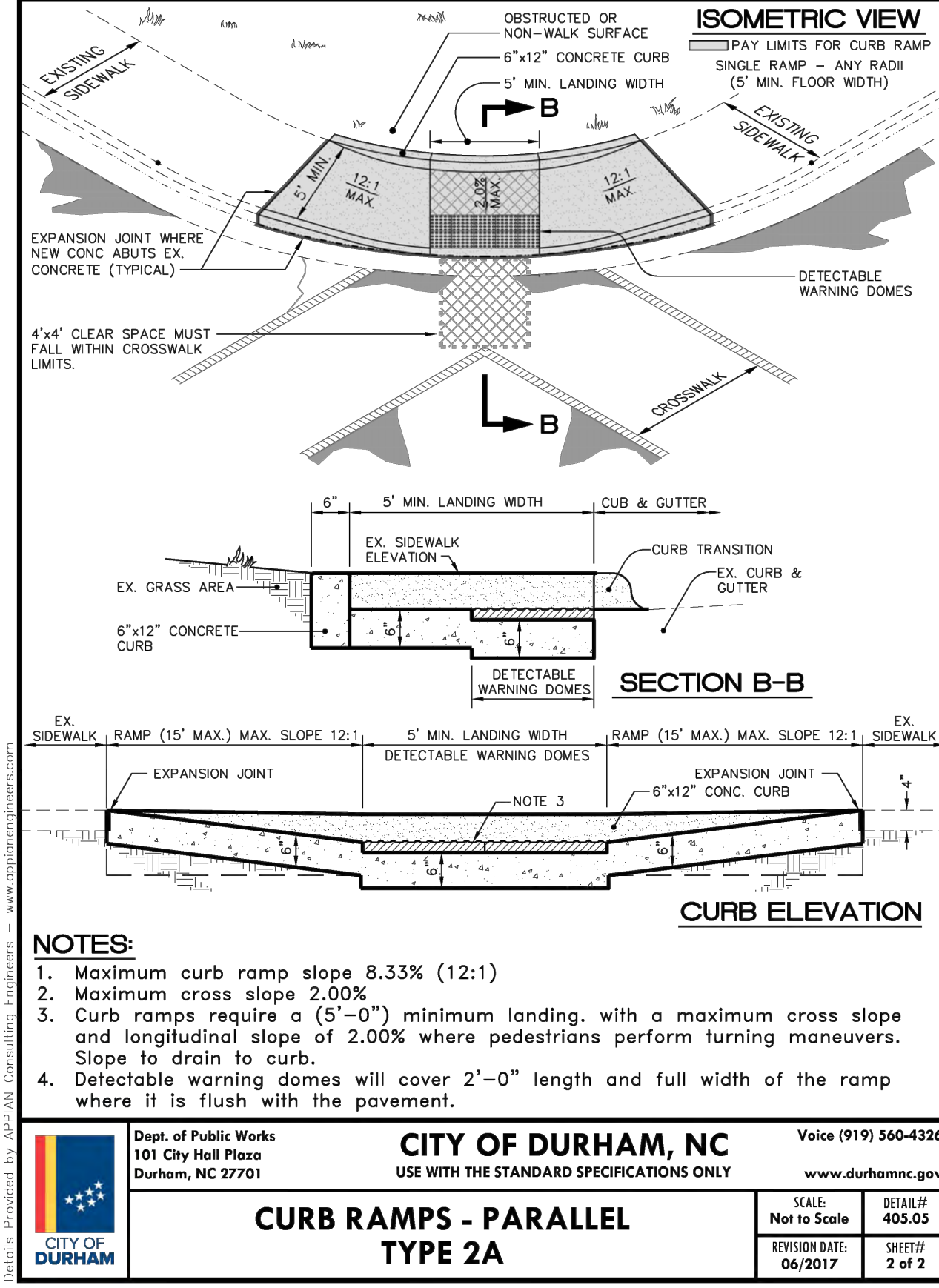
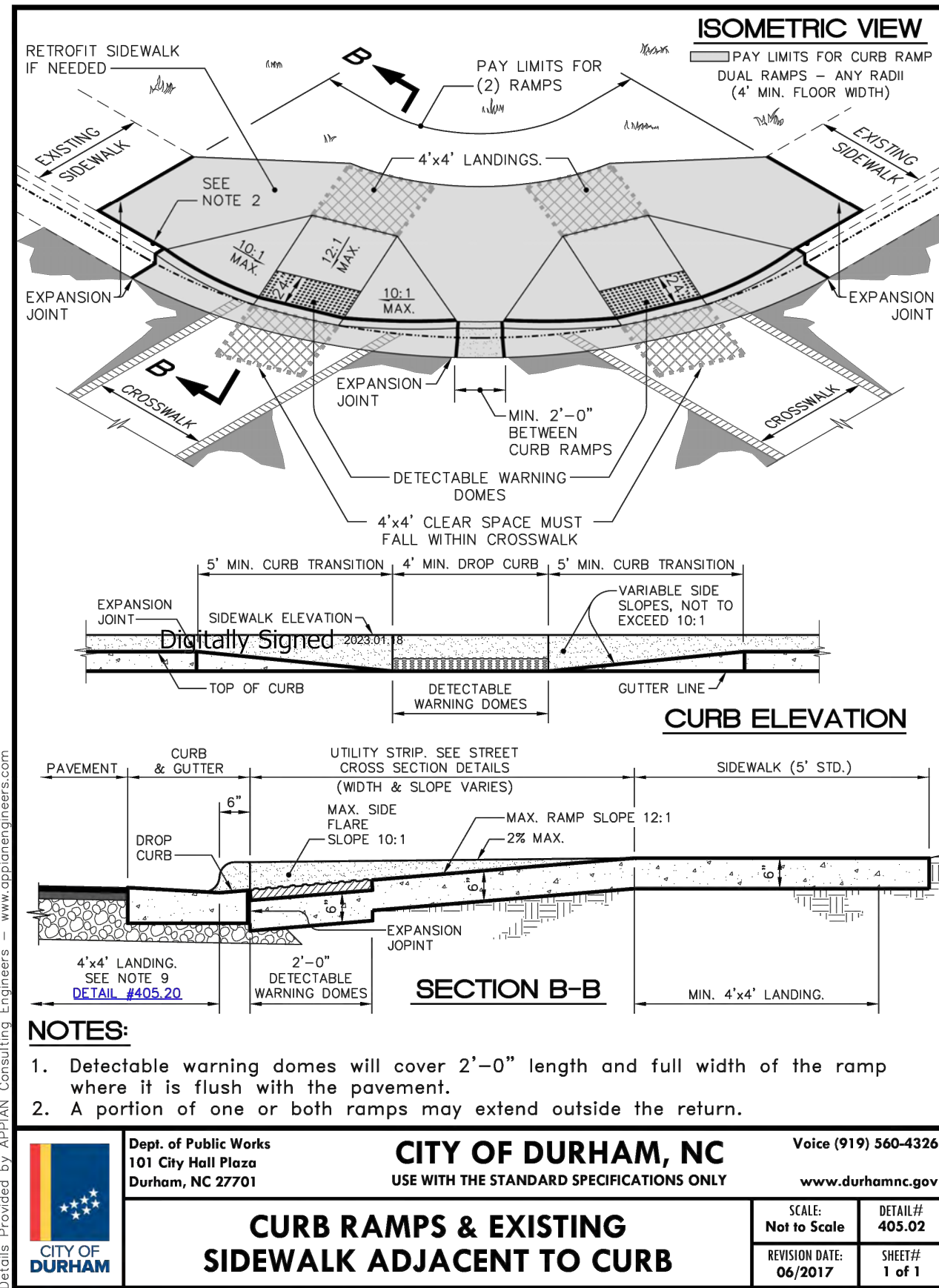
GoTriangle Bus Stop Design
Durham, NC

DETAILS

SHEET NO. 5

SEAL 033574
ENGINEER
JOSHUA HURST

Plot Stamp: 3/3/2026 4:53:41 PM - Caroline Smith
File: H:\26\26947 - GoTriangle Planning and Design_On-Call\001 - Durham Bus Stop Site Design\design_CD\CD_General Sheets B-5.dwg



Triangle
Durham

GO GO

KITTELSON & ASSOCIATES
NC LICENSE #C-4196
702 OBERLIN RD, SUITE 410
RALEIGH, NC 27605
P. 919.926.1291

APPROVED	DATE
REVISION	#

Submission Date: 03/31/26
Drawn: CKS
Designed: CKS
Checked: KJH

PROJECT NO. 26947

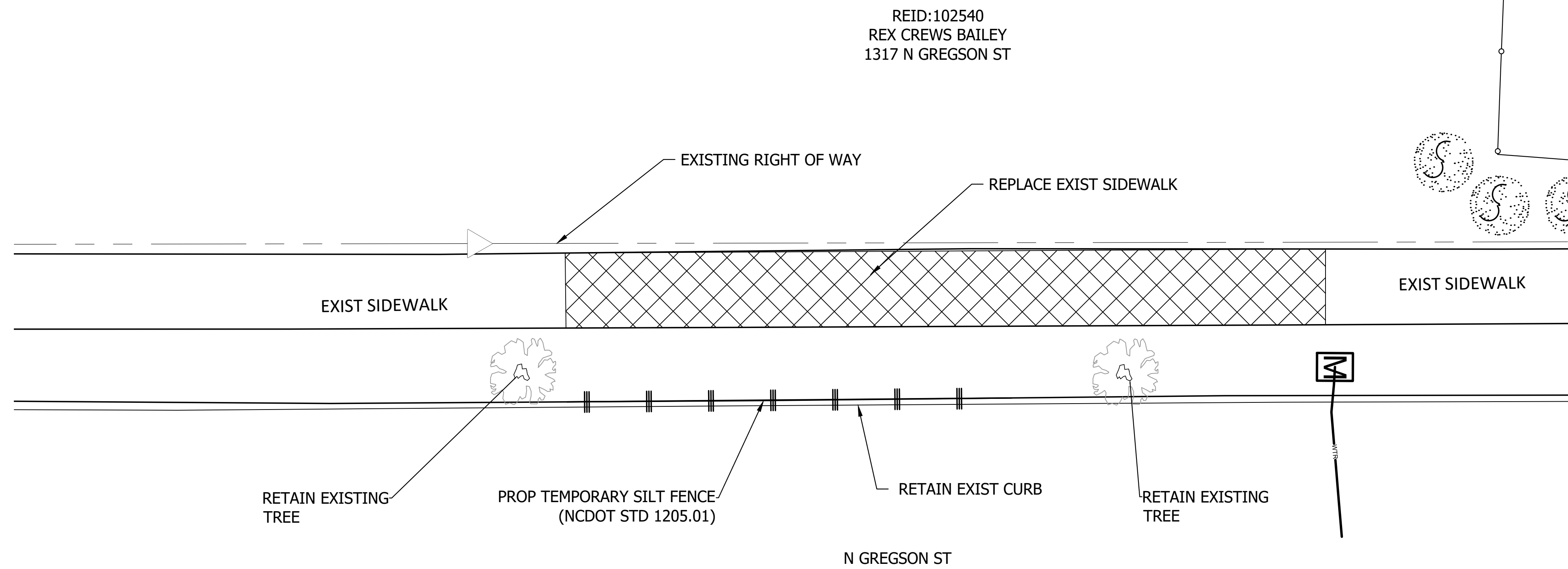
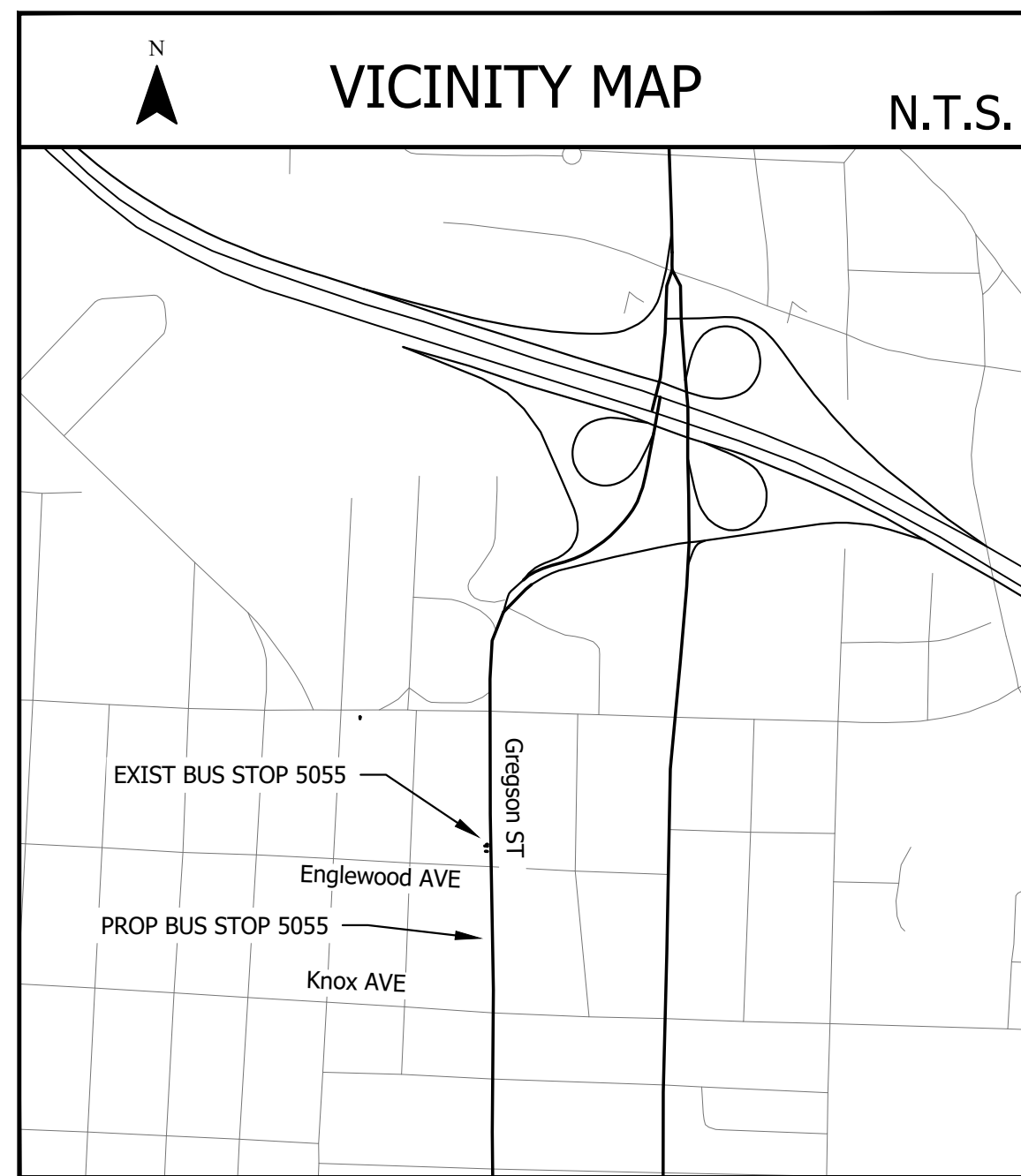
GoTriangle Bus Stop Design
Durham, NC

DETAILS

SHEET NO. 6

Plot Stamp: 3/3/2026 4:54:04 PM - Caroline Smith
File: H:\26\26947 - GoTriangle Planning and Design On-Call\001 - Durham Bus Stop Site Design\design_CD\CD_General Sheets B-5.dwg

EXISTING SURVEY/DEMOLITION PLAN



EXIST CONCRETE TO BE REMOVED

BUS STOP ID: 5055

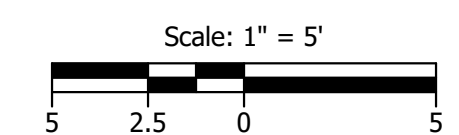
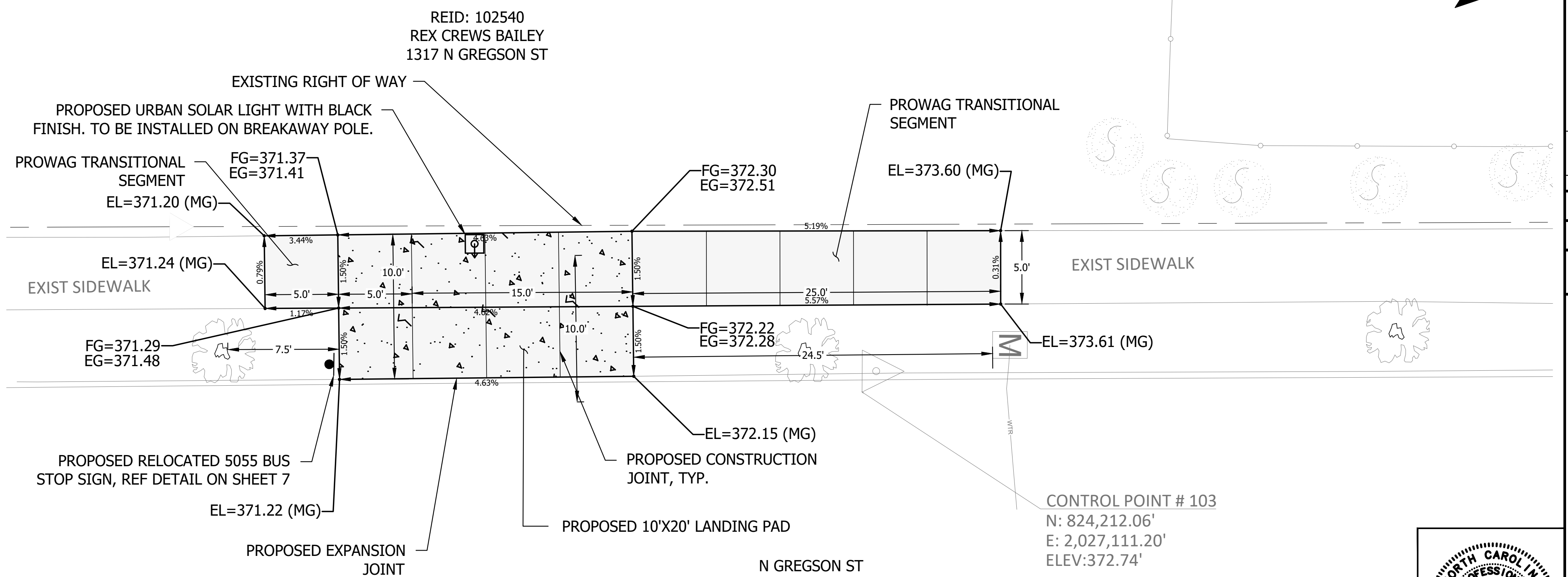
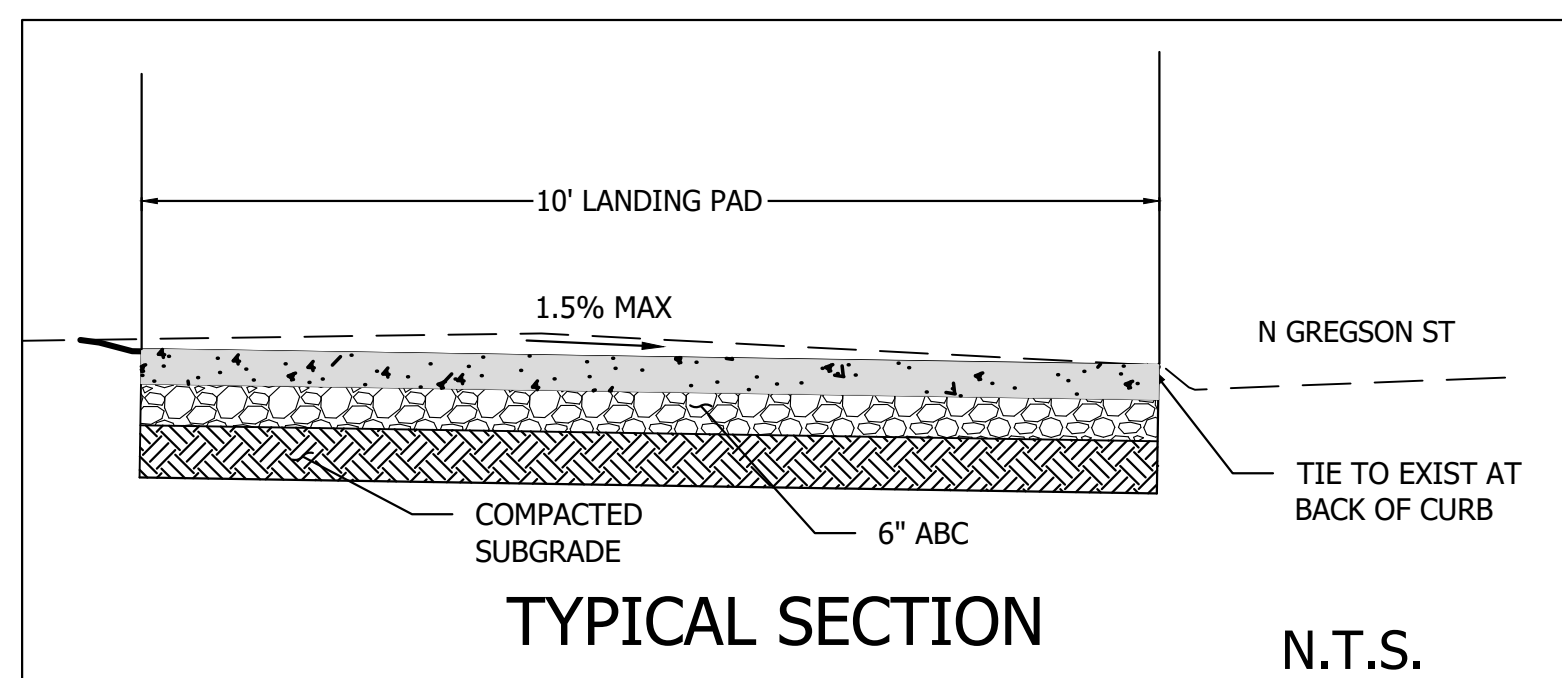
PROPOSED PLAN

NOTES:

- SEE GENERAL NOTES, LIST OF STANDARDS, AND DETAILS ON SHEET 02.
- MOUNT SIGN 7'-0" ABOVE SIDEWALK. 2'-0" MIN AND 8' MAX CLEAR FROM FACE OF CURB TO EDGE OF SIGN.
- CONTRACTOR TO RETAIN AND PROTECT EXISTING UTILITIES. ANY DAMAGE TO EXISTING UTILITIES WILL REQUIRE THE CONTRACTOR TO REPLACE THE UTILITIES AT NO ADDITIONAL COST TO THE OWNER.
- IF ANY DAMAGE OCCURS TO ADJACENT SIDEWALK PANELS, CONTRACTOR TO REPLACE ENTIRE PANEL.
- CONTRACTOR TO SEED AND MULCH REGRADED AREAS.
- TRUNCATED DOMES TO BE FEDERAL YELLOW IN COLOR.
- THIS STOP IS IN A HISTORIC DISTRICT. NO WORK TO BEGIN UNTIL A CERTIFICATE OF APPROPRIATENESS IS OBTAINED. ALL AMENITIES TO HAVE BLACK FINISHES.

EG = EXISTING GRADE
FG = FINAL GRADE
MG = MATCH EXISTING GRADE

PROPOSED 4" CONCRETE
PROPOSED BUS SHELTER/LANDING AREA/AMENITY 6" PAD



KITTELSON & ASSOCIATES
NC LICENSE #C-4196
702 OBERLIN RD, SUITE 410
RALEIGH, NC 27605
P. 919.926.1291

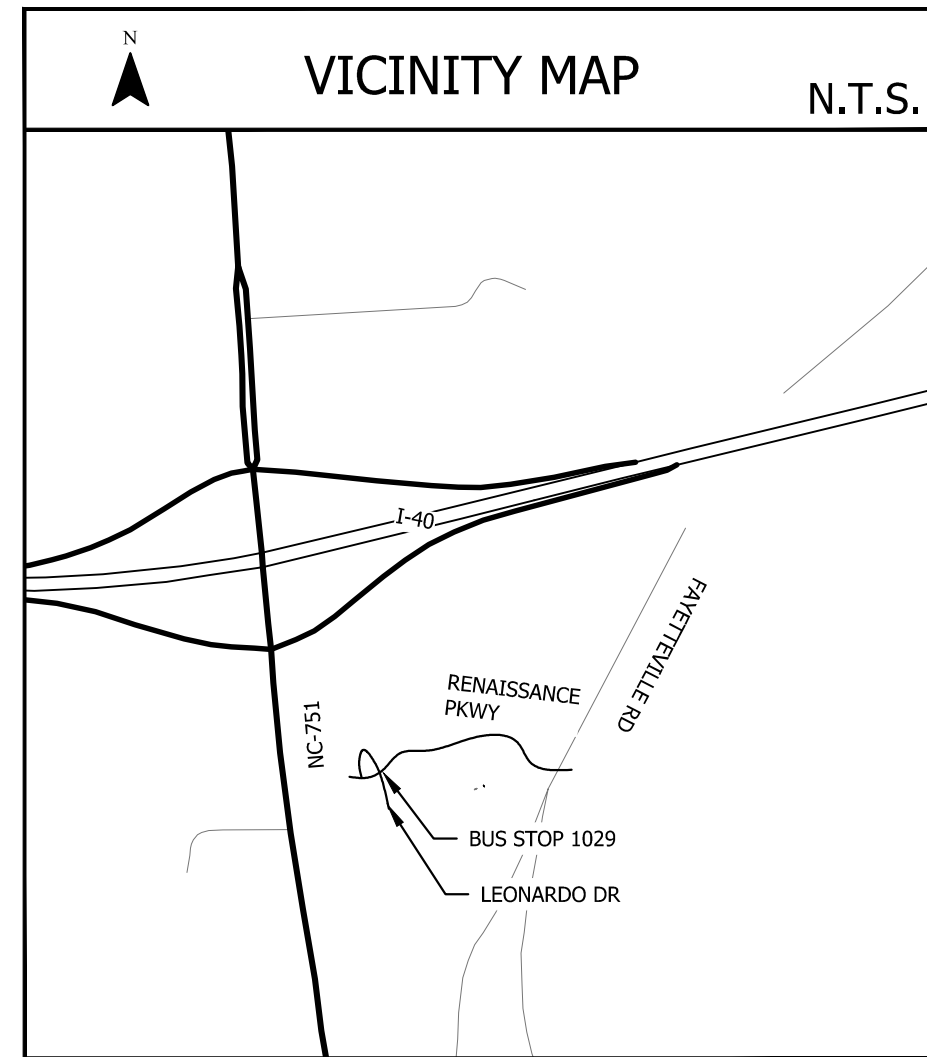
REVISION	DATE	#

Submission Date: 03/31/26
Drawn: CKS, Designed: CKS, Checked: KJH
PROJECT NO. 26947

GoTriangle Bus Stop Design
Durham, NC
5055 - GREGSON ST AT ENGLEWOOD AVE

Plot Stamp: 3/4/2026 1:39:43 PM - Caroline Smith
File: H:\26\26947 - GoTriangle Planning and Design On-Call\001 - Durham Bus Stop Site Design\design_CD\CD_5055.dwg

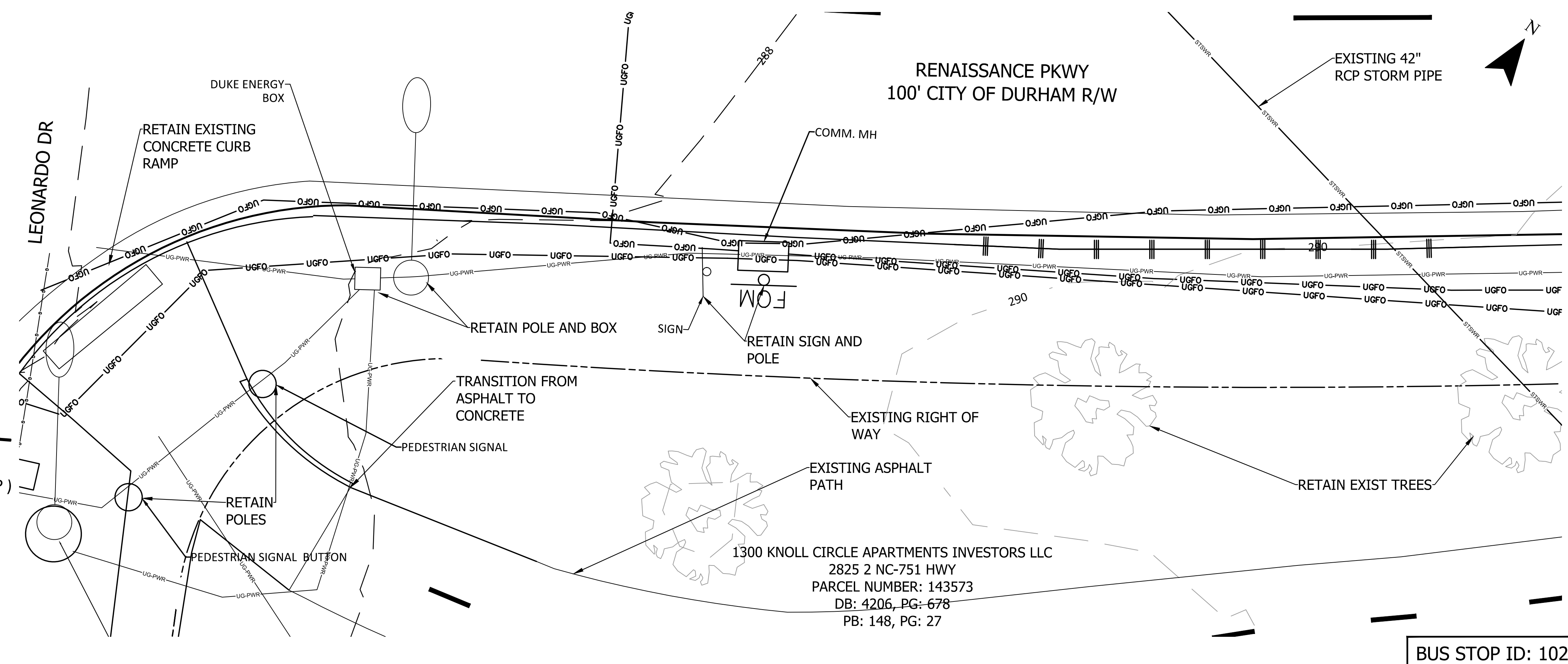
EXISTING SURVEY/DEMOLITION PLAN



EXIST CONCRETE TO BE REMOVED

CONTROL POINT (1" EIP)
N:782,884.89'
E:2,012,815.05'
ELE:287.34'

1" EIP



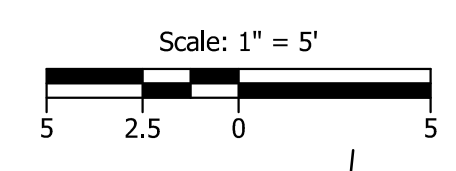
BUS STOP ID: 1029

PROPOSED PLAN

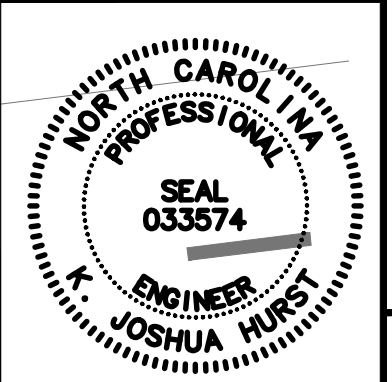
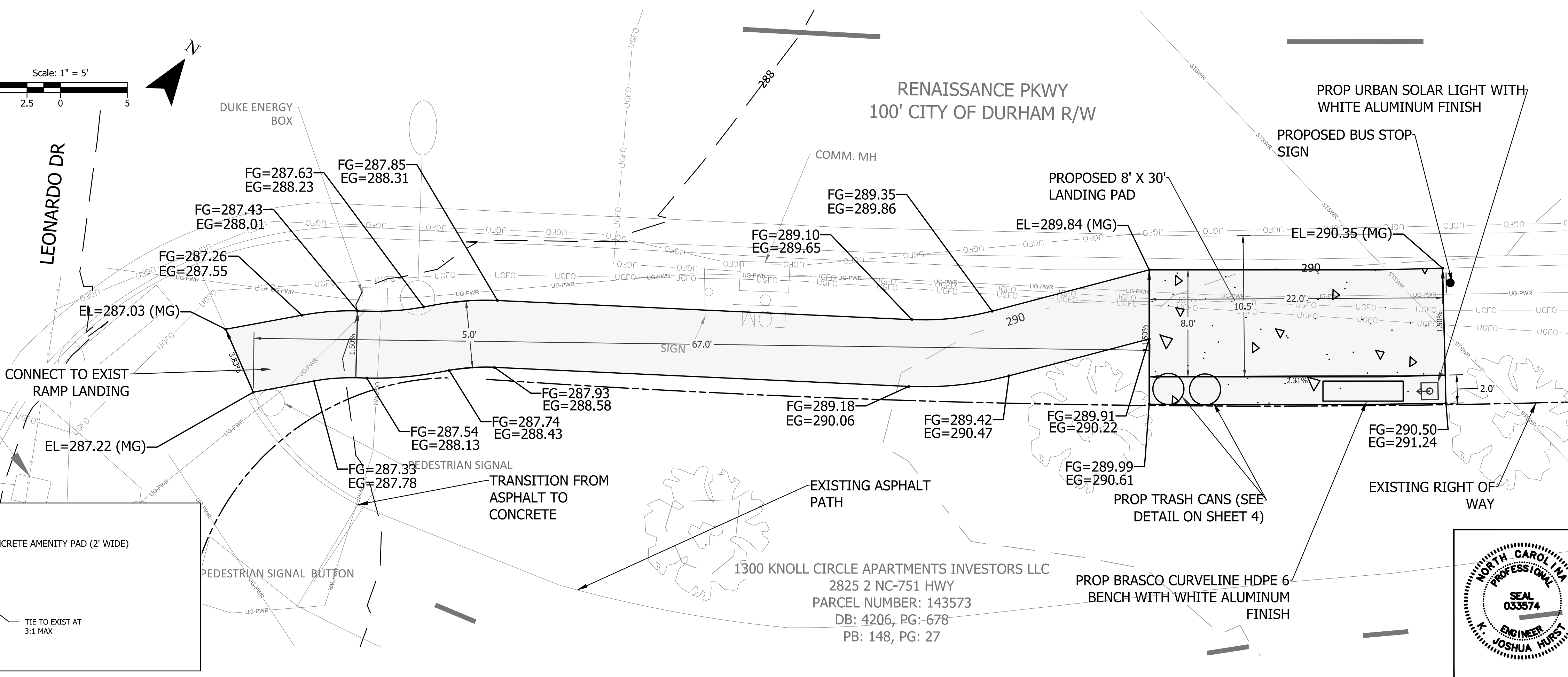
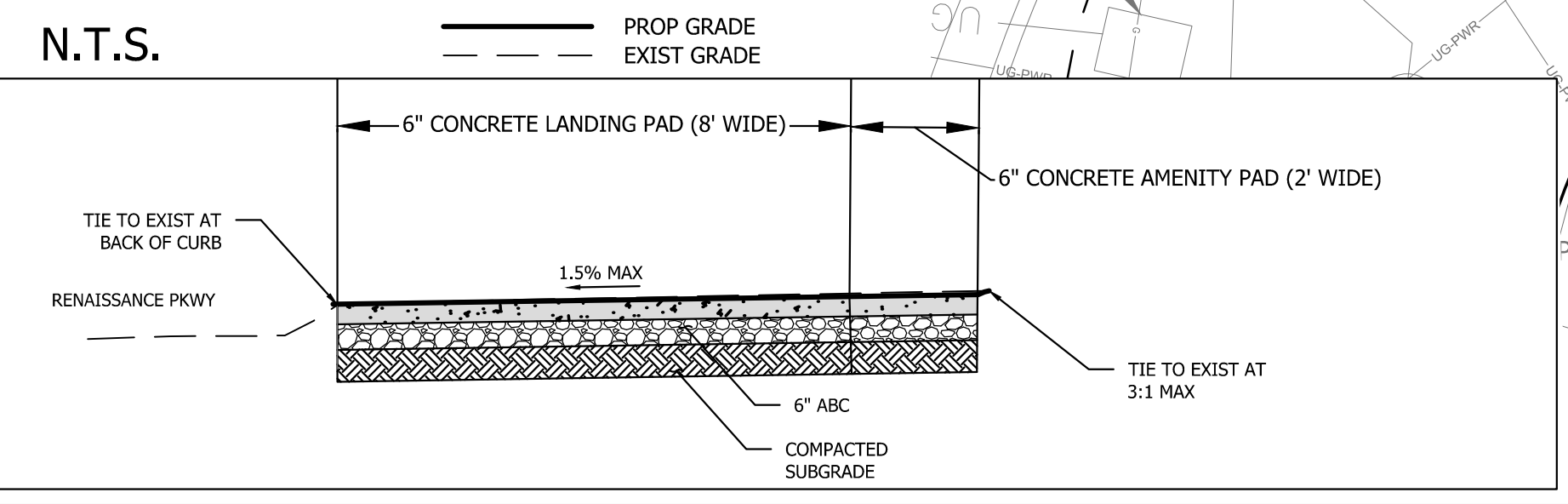
- NOTES:
- SEE GENERAL NOTES, LIST OF STANDARDS, AND DETAILS ON SHEET 02.
 - MOUNT SIGN 7'-0" ABOVE SIDEWALK. 2'-0" MIN AND 8' MAX CLEAR FROM FACE OF CURB TO EDGE OF SIGN.
 - CONTRACTOR TO RETAIN AND PROTECT EXISTING UTILITIES. ANY DAMAGE TO EXISTING UTILITIES WILL REQUIRE THE CONTRACTOR TO REPLACE THE UTILITIES AT NO ADDITIONAL COST TO THE OWNER.
 - IF ANY DAMAGE OCCURS TO ADJACENT SIDEWALK PANELS, CONTRACTOR TO REPLACE ENTIRE PANEL.
 - TRUNCATED DOMES TO BE FEDERAL YELLOW IN COLOR.

EG = EXISTING GRADE
FG = FINISHED GRADE
MG = MATCH EXISTING GRADE

PROPOSED BUS SHELTER/LANDING AREA/AMENITY 6" PAD
PROPOSED 4" CONCRETE



TYPICAL SECTION



KITTELSON & ASSOCIATES
NC LICENSE #C-4196
702 OBERLIN RD, SUITE 410
RALEIGH, NC 27605
P. 919.926.1291

#	DATE	REVISION

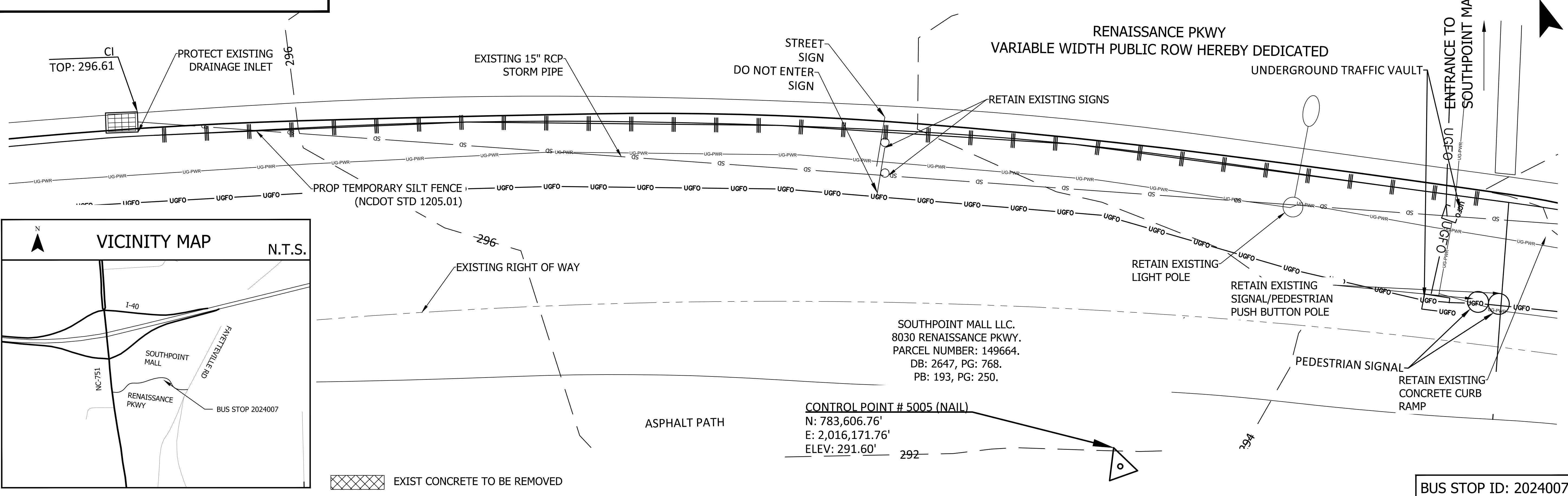
Submission Date: 03/31/26
Drawn: CKS, Designed: CKS, Checked: KJH
PROJECT NO. 26947

GoTriangle Bus Stop Design
Durham, NC
1029 RENAISSANCE PKWY AT LEONARDO DR (EB)

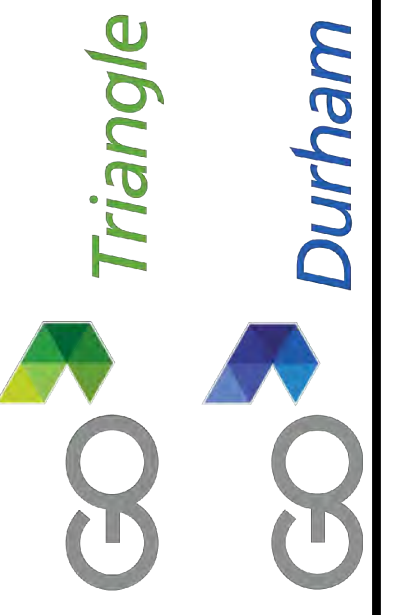
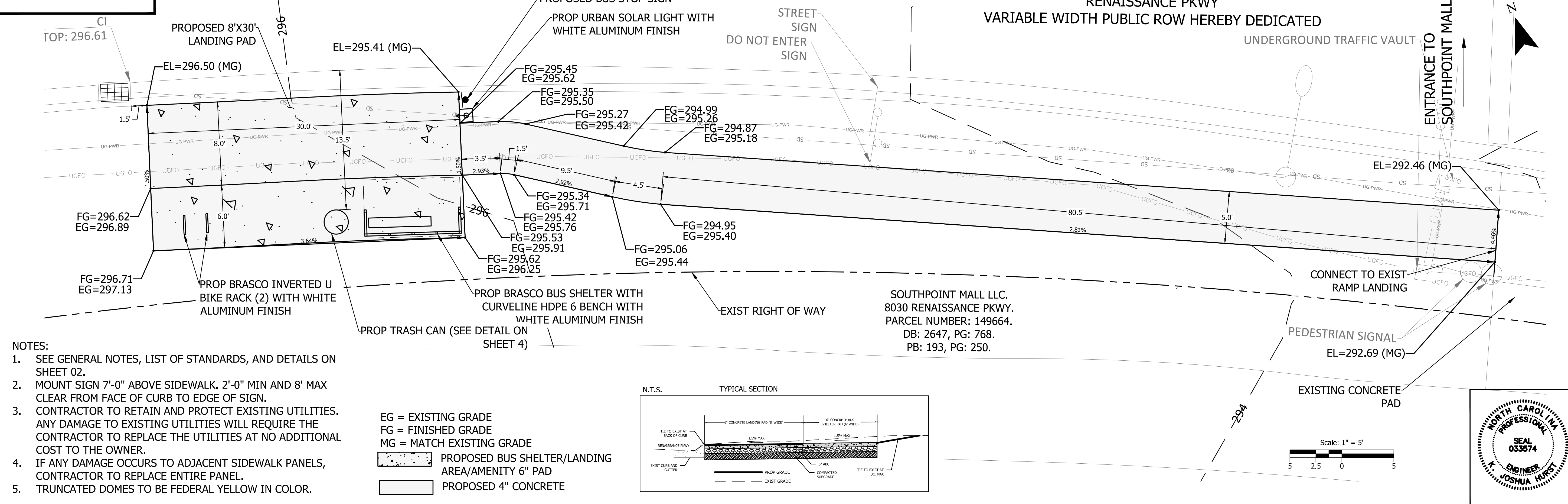
SHEET NO. 11

Plot Stamp: 4/6/2026 11:41:38 AM - Caroline Smith
File: H:\26\26947 - GoTriangle Planning and Design On-Call\001 - Durham Bus Stop Site Design\design_CD_CD_1029.dwg

EXISTING SURVEY/DEMOLITION PLAN



PROPOSED PLAN



KITTELSON & ASSOCIATES

NC LICENSE #C-4196
702 OBERLIN RD, SUITE 410
RALEIGH, NC 27605
P 919.926.1291

REVISION	DATE	#

Submission Date: 03/31/26
Drawn: CKS
Designed: CKS
Checked: KJH

PROJECT NO. 26947

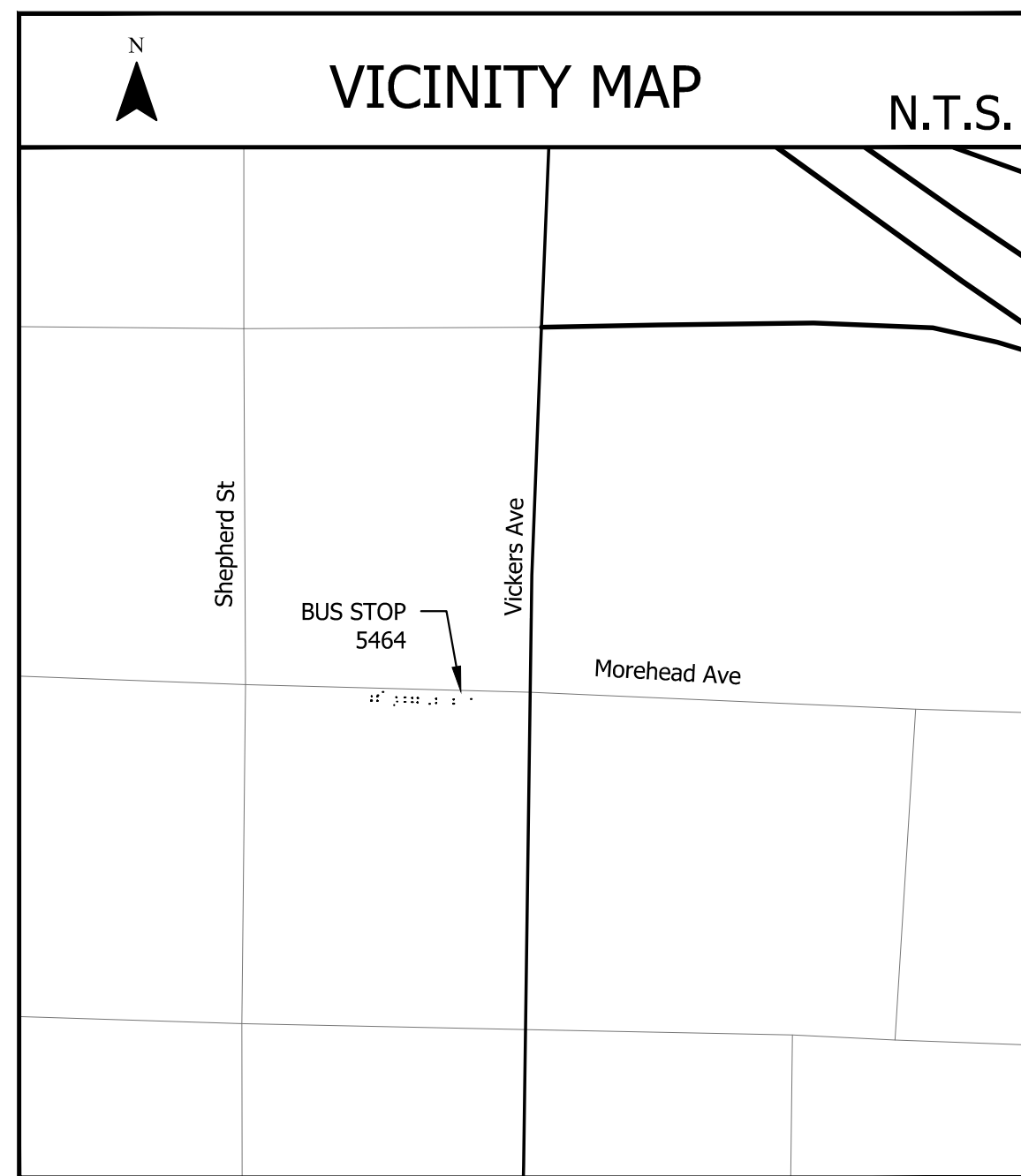
GoTriangle Bus Stop Design
Durham, NC

2024007 RENAISSANCE PKWY AT SOUTHPOINT (EB)

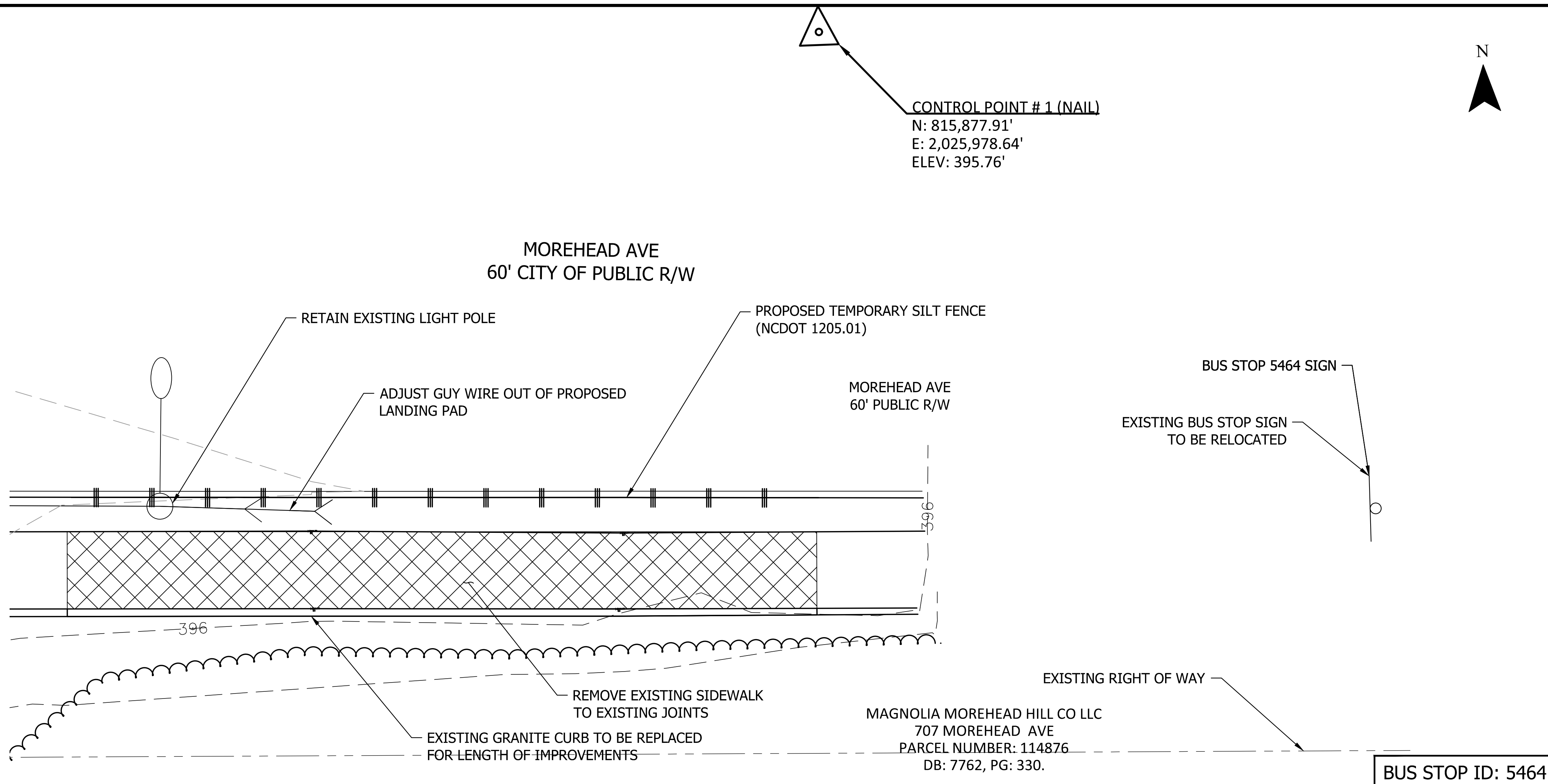
SHEET NO. 12

Plot Stamp: 4/6/2026 11:50:33 AM - Caroline Smith
File: H:\26\26947 - GoTriangle Planning and Design On-Call\001 - Durham Bus Stop Site Design\design\CD\CD_2024007.dwg

EXISTING SURVEY/DEMOLITION PLAN



EXIST CONCRETE TO BE REMOVED

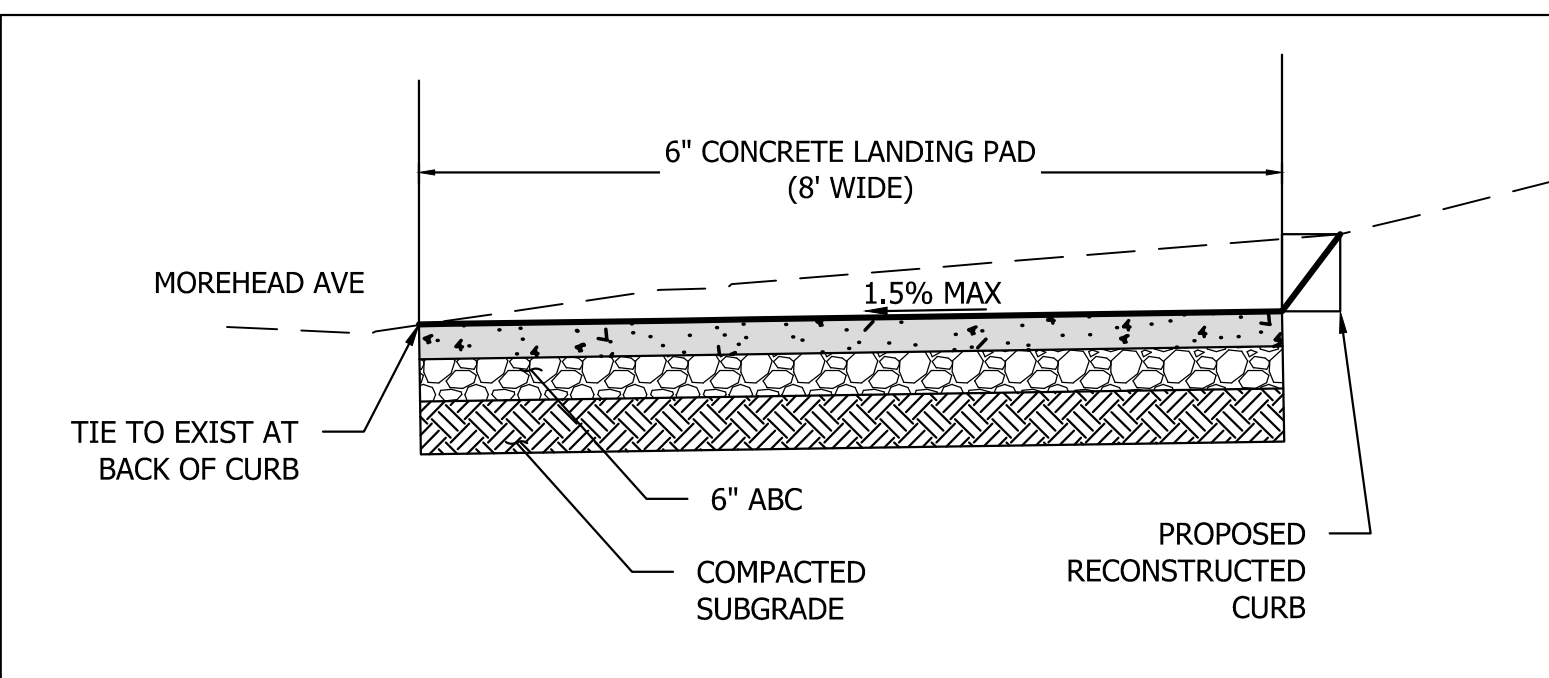


PROPOSED PLAN

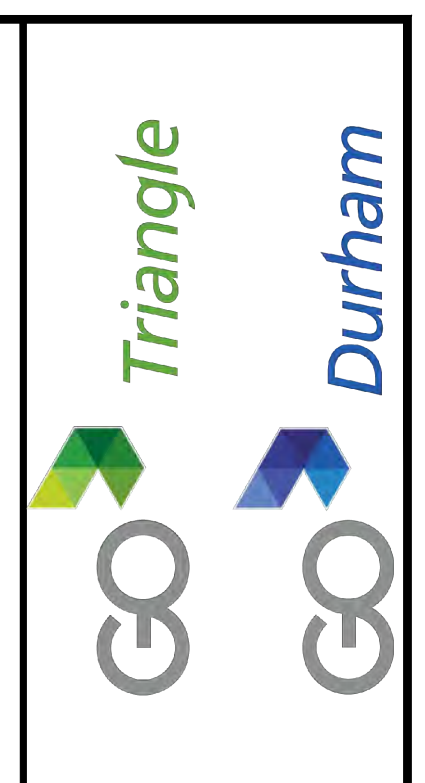
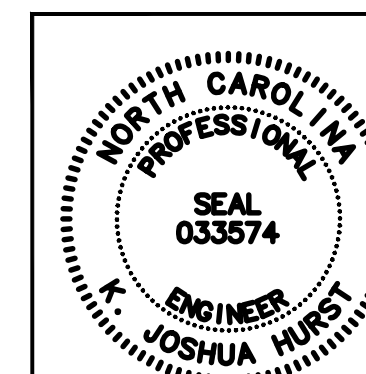
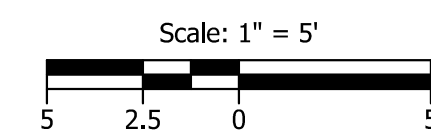
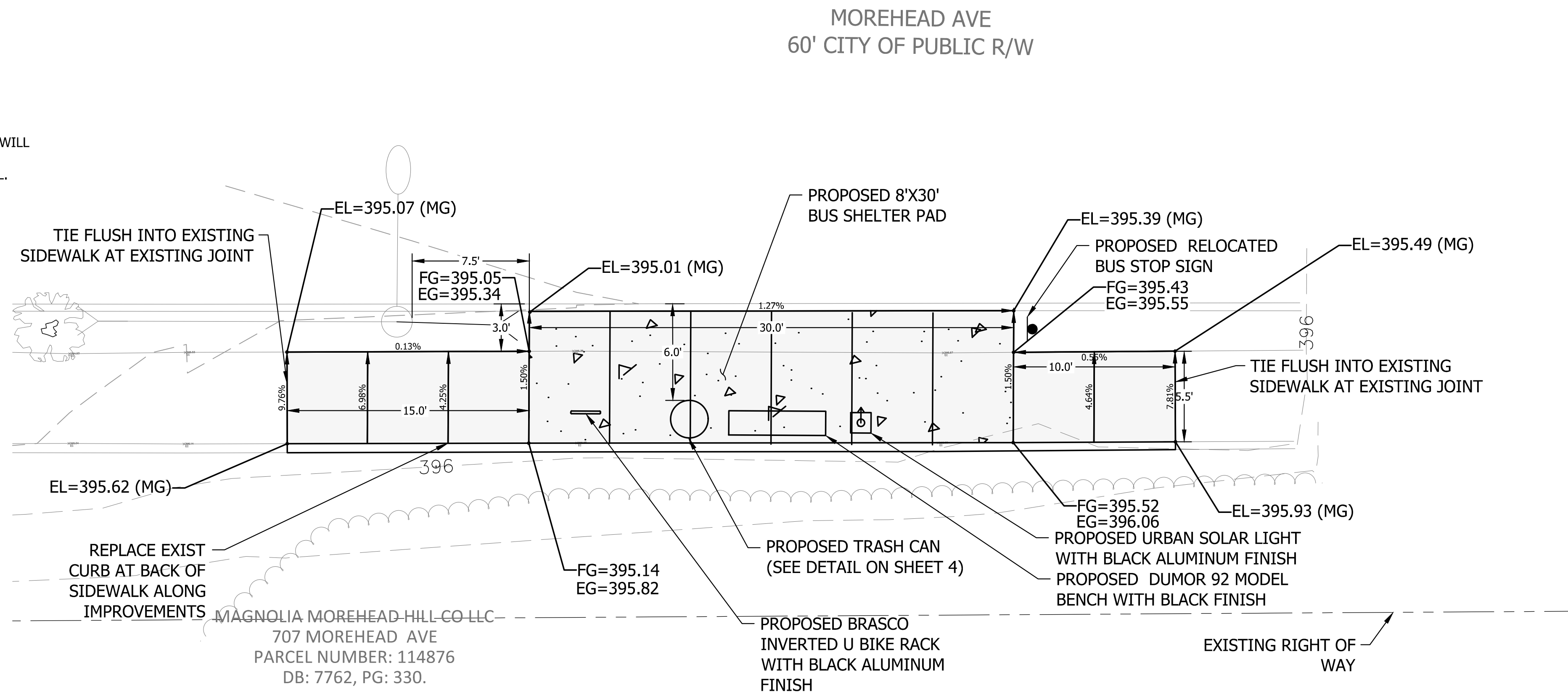
- NOTES:
- SEE GENERAL NOTES, LIST OF STANDARDS, AND DETAILS ON SHEET 02.
 - MOUNT SIGN 7'-0" ABOVE SIDEWALK. 2'-0" MIN AND 8' MAX CLEAR FROM FACE OF CURB TO EDGE OF SIGN.
 - CONTRACTOR TO RETAIN AND PROTECT EXISTING UTILITIES. ANY DAMAGE TO EXISTING UTILITIES WILL REQUIRE THE CONTRACTOR TO REPLACE THE UTILITIES AT NO ADDITIONAL COST TO THE OWNER.
 - IF ANY DAMAGE OCCURS TO ADJACENT SIDEWALK PANELS, CONTRACTOR TO REPLACE ENTIRE PANEL.
 - CONTRACTOR TO SEED AND MULCH REGRADED AREAS.
 - TRUNCATED DOMES TO BE FEDERAL YELLOW IN COLOR.
 - THIS STOP IS IN A HISTORIC DISTRICT. NO WORK TO BEGIN UNTIL A CERTIFICATE OF APPROPRIATENESS IS OBTAINED. ALL AMENITIES TO HAVE BLACK FINISHES.

EG = EXISTING GRADE
 FG = FINAL GRADE
 MG = MATCH EXISTING GRADE

PROPOSED BUS SHELTER/LANDING AREA/AMENITY 6" PAD
 PROPOSED 4" CONCRETE



N.T.S. TYPICAL SECTION



KITTELSON & ASSOCIATES
 NC LICENSE #C-4196
 702 OBERLIN RD, SUITE 410
 RALEIGH, NC 27605
 P. 919.926.1291

#	DATE	REVISION

Submission Date: 03/31/26
 Drawn: LNB
 Designed: LNB
 Checked: KJH
 PROJECT NO. 26947

GoTriangle Bus Stop Design
 Durham, NC
 5464 MOREHEAD AVE AT VICKERS AVE (EB)

SHEET NO. 13

Plot Stamp: 4/6/2026 12:24:56 PM - Caroline Smith
 File: H:\26\26947 - GoTriangle Planning and Design On-Call\001 - Durham Bus Stop Site Design\design_CD\CD_5464.dwg